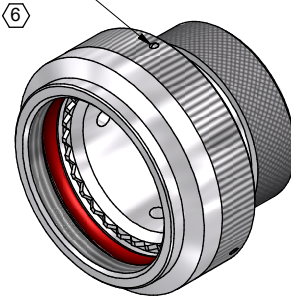


WHEN 'L' MODIFICATION IS SPECIFIED,
COUPLING NUT SHALL HAVE 3 LOCK WIRE HOLES,
120° APART



CODE 40 - HEAT SHRINK BOOT BACKSHELL

209M412-19B-DL

SERIES _____
 ORDER NUMBER (TABLE 1) _____
 MATERIAL _____
 REFER TO CH00-0250-004
 FINISH _____
 REFER TO CH00-0250-004
 MODIFICATION CODE _____
 REFER TO CH00-0250-004

NOTES:

1. THIS PRODUCT IS DESIGNED TO TERMINATE A HEAT SHRINKABLE LIPPED BOOT TO A CONNECTOR.
2. FOR ADDITIONAL DIMENSIONS, ORDERING INFORMATION AND MODIFICATIONS, SEE CH00-0250-004.
3. BACKSHELL TO BE PERMANENTLY MARKED/BAGGED AND LABELLED WITH CODE IDENTIFICATION NUMBER AND PART NUMBER. (e.g. 06090-209M412-19B).
4. KNURL INSIDE BOOT GROOVE MAY BE SUPPLIED AT MANUFACTURER'S OPTION.
- ⑤ BACKSHELL MATES TO MIL-C-38999 SERIES III & IV, CLASS C, F, K AND W, D38999/20, /24, /26, /40, /46, /47 CONNECTORS AND WHEN SO MATED PROVIDE A WATER-TIGHT SEAL MEETING THE REQUIREMENTS OF MIL-C-85049, PAR. 3.5.7.
- ⑥ WHEN 'L' MODIFICATION IS SPECIFIED, COUPLING NUT SHALL HAVE 3 LOCK WIRE HOLES, 120° APART.
7. THIS IS A FUNCTIONAL EQUIVALENT OF MIL-C-85049/69
- ⑧ WHEN GROUNDING SCREW MODIFICATION IS ORDERED 18,50 MAX BECOMES 27,20 MAX AND 25,50 MAX BECOMES 34,20 MAX

| | | | | | | |
|--|---------------------------|--------------------|---|---|--|---|
| DRAWN | W.RUST | DATE 11/09/2015 |  3RD ANGLE PROJECTION NOT TO SCALE | TITLE: HEAT SHRINK BOOT BACKSHELL |  Polamco  | |
| CHECKED | | 11/09/2015 | | | | |
| APPROVED | K.SHEPPARD | 11/09/2015 | | | | UNLESS OTHERWISE SPECIFIED ALL DIMENSIONS IN MILLIMETRES GENERAL TOL LINEAR +/-0.25MM ANGULAR +/- 1° |
| APPROVED | H.SMITH | 15/10/2015 | | | | |
| REVISIONS | | | | ASSY USED ON: MIL-DTL-39888 SERIES III & IV | TE CONNECTIVITY - POLAMCO LTD RESERVES THE RIGHT TO AMEND THIS DRAWING AND THE INFORMATION SET FORTH HEREON AT ANY TIME. USERS SHOULD INDEPENDENTLY EVALUATE THE SUITABILITY OF THE PRODUCT FOR THEIR APPLICATION. | |
| LTR | DESCRIPTION | DATE | APPROVED | | | |
| H | REVISED PER ECO-15-002406 | 19/02/15 | H.SMITH | | | |
| J | REVISED PER ECO-15-013980 | 15/10/2015 | H.SMITH | | | |
| TE CAGE CODE: 06090 POLAMCO/TE CAGE CODE: U5792 | | | | DRAWING NO: 209M4XX | DRAWING REV: J | SHT 1 |

WHEN 'L' MODIFICATION IS SPECIFIED,
COUPLING NUT SHALL HAVE 3 LOCK WIRE HOLES,
120° APART

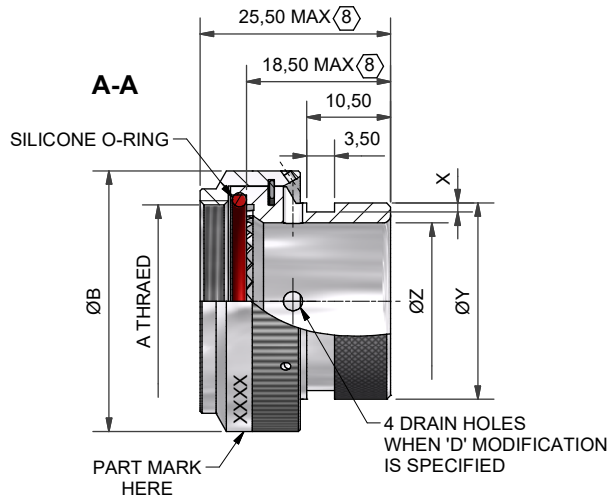
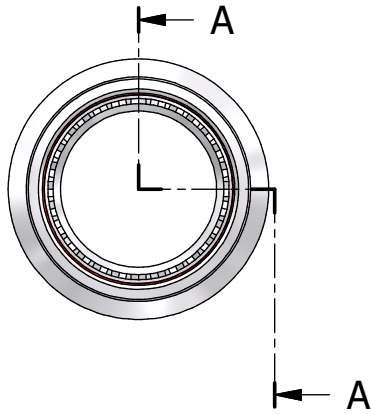
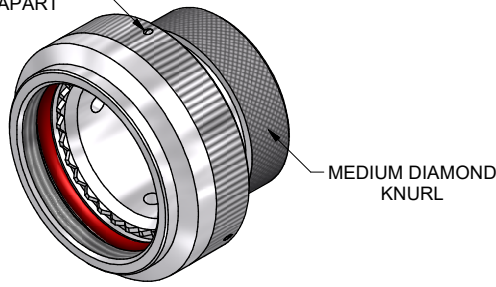
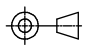


TABLE 1

| BASE PART NUMBER | ORDER.NO. ⁽⁵⁾ | SHELL SIZE COM'L / MIL | A THREAD | ØB MAX | X +0,20/-0,00 | ØY MAX | ØZ MIN |
|------------------|--------------------------|------------------------|-----------|--------|---------------|--------|--------|
| 209M408 | 08 | 9 / A | M12 × 1.0 | 18,0 | 1,12 | 13,50 | 6,80 |
| 209M410 | 10 | 11 / B | M15 × 1.0 | 21,0 | 1,12 | 15,40 | 10,30 |
| 209M412 | 12 | 13 / C | M18 × 1.0 | 24,5 | 1,12 | 19,70 | 13,60 |
| 209M414 | 14 | 15 / D | M22 × 1.0 | 29,0 | 1,12 | 21,30 | 16,30 |
| 209M416 | 16 | 17 / E | M25 × 1.0 | 32,5 | 1,12 | 24,50 | 19,50 |
| 209M418 | 18 | 19 / F | M28 × 1.0 | 35,5 | 1,12 | 26,50 | 21,90 |
| 209M420 | 20 | 21 / G | M31 × 1.0 | 37,0 | 1,75 | 31,00 | 25,20 |
| 209M422 | 22 | 23 / H | M34 × 1.0 | 40,0 | 1,75 | 34,40 | 28,30 |
| 209M424 | 24 | 25 / J | M37 × 1.0 | 43,5 | 1,75 | 36,60 | 31,50 |

| | | | |
|---|---------------------------|--------------------|---|
| DRAWN | W.RUST | DATE 11/09/2015 |  3RD ANGLE PROJECTION NOT TO SCALE |
| CHECKED | | 11/09/2015 | |
| APPROVED | K.SHEPPARD | 11/09/2015 | |
| APPROVED | H.SMITH | 15/10/2015 | |
| UNLESS OTHERWISE SPECIFIED ALL DIMENSIONS IN MILLIMETRES GENERAL TOL LINEAR +/-0,25MM ANGULAR +/- 1° | | | |
| REVISIONS | | | |
| LTR | DESCRIPTION | DATE | APPROVED |
| H | REVISED PER ECO-15-002406 | 19/02/15 | H.SMITH |
| J | REVISED PER ECO-15-013980 | 15/10/2015 | H.SMITH |

TITLE:
HEAT SHRINK BOOT BACKSHELL

ASSY USED ON:
MIL-DTL-39888 SERIES III & IV



Polamco
TE
connectivity

TE CAGE CODE: 06090
POLAMCO/TE CAGE CODE: U5792

TE CONNECTIVITY - POLAMCO LTD RESERVES THE RIGHT TO AMEND THIS DRAWING AND THE INFORMATION SET FORTH HEREON AT ANY TIME. USERS SHOULD INDEPENDENTLY EVALUATE THE SUITABILITY OF THE PRODUCT FOR THEIR APPLICATION.

| | | |
|-------------------------------|--------------------------|-----------------|
| DRAWING NO: 209M4XX | DRAWING REV: J | SHT 2 |
|-------------------------------|--------------------------|-----------------|

X-ON Electronics

Largest Supplier of Electrical and Electronic Components

Click to view similar products for [Circular MIL Spec Connector](#) category:

Click to view products by [TE Connectivity](#) manufacturer:

Other Similar products are found below :

[89075GULPR](#) [0025-262-542](#) [0025-264-3014](#) [58-570121-04S](#) [0134-213-1208](#) [0134-213-2209](#) [0025-258-000](#) [60-042022-07P](#) [60-042022-19P](#)
[60-042022-23P](#) [60-042217-10P](#) [0114-201-1278](#) [012-0467-000](#) [602GB06EG24-61SN](#) [0134-201-1207](#) [0134-213-1006](#) [6104-207-2302](#) [6104-](#)
[208-1902](#) [61-168211-04P](#) [61-168617-10P](#) [6131-202-19149P](#) [6131-204-21149P](#) [6131-208-13149P](#) [6131-209-17149P](#) [6131-210-11149P](#) [6131-](#)
[211-19149P](#) [6131-216-19149P](#) [6131-259-21149P](#) [6131-259-23149P](#) [6131-265-17149P](#) [6131-265-19149P](#) [CS3100A18-1P-472](#) [CS3100A-36-](#)
[77P](#) [CS3101A-16-55P](#) [CS3102A-10SL-55P](#) [CS3102A-14S-58P](#) [CS3102A-32-17P](#) [CS3102A32-25S](#) [CS3102C18-4P-472](#)
[CS3106A10SL3S004](#) [CS3106A-18-73S](#) [CS3108A-14S-52S](#) [CS3108A-28-51S](#) [6162-233-1277](#) [6162-324-1231](#) [M243082296Z](#)
[M2884010AC1S1](#) [CT0-24-10SC](#) [CT0M20-7PCAU](#) [M28840/17AC1G3](#)