

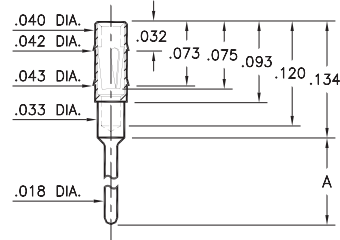
# PIN RECEPTACLES

**FOR .015" - .020" DIAMETER PINS (#11 CONTACT)  
AND .015" - .022" DIAMETER PINS (#05 & #21 CONTACTS)  
(SEE SPECIFIC CONTACT RANGE ON PAGE 251)**

## 0489

**0489-X-15-XX-11-XX-04-0**

Press-fit in .041 mounting hole



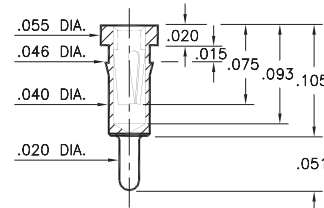
Basic Part Number	Length A
<b>0489-0</b>	.102
<b>0489-1</b>	.199
<b>0489-2</b>	.299

## 0463

**0463-0-15-XX-21-XX-04-0**

Press-fit in .043 mounting hole.

Shell is Phosphor Bronze Alloy 544 (B2)

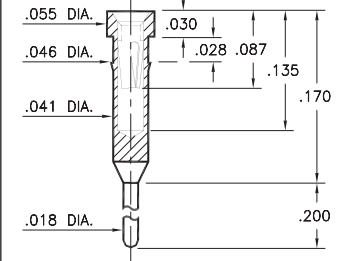


## 0466

**0466-0-15-XX-21-XX-04-0**

Press-fit in .043 mounting hole.

Shell is Phosphor Bronze Alloy 544 (B2)

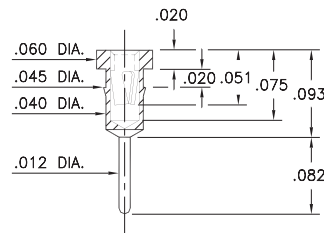


## 7491

**7491-0-15-XX-09-XX-04-0**

Press-fit in .042 mounting hole

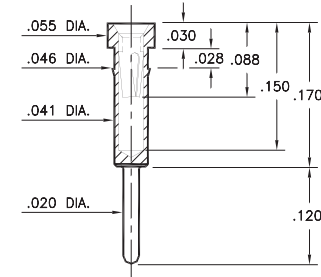
\*Contact substitution not recommended



## 0462

**0462-0-15-XX-X1-XX-04-0**

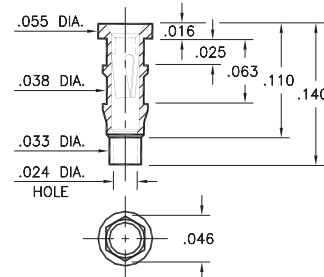
Press-fit in .043 mounting hole



## 0560

**0560-0-15-XX-11-XX-10-0**

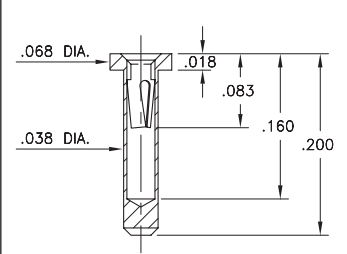
Hex press-fit in .043 plated through-hole



## 5552

**5552-0-15-XX-05-XX-10-0**

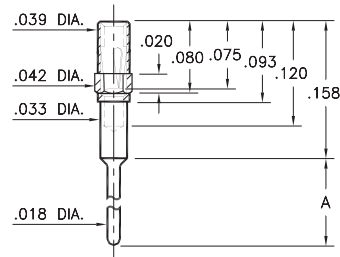
Solder mount in .040 min. mounting hole



## 4890

**4890-X-15-XX-11-XX-04-0**

Octagonal press-fit in .041 mounting hole

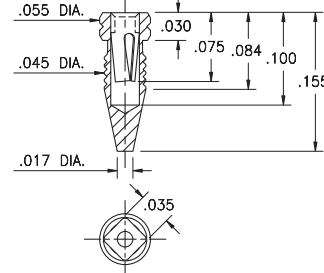


Basic Part Number	Length A
<b>4890-0</b>	.102
<b>4890-1</b>	.199
<b>4890-2</b>	.299

## 4994

**4994-0-15-15-11-27-10-0**

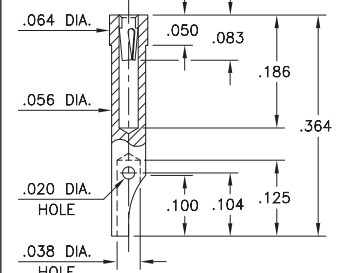
Compliant press-fit in .041 - .044 dia. mounting hole



## 4485

**4485-0-51-XX-21-XX-10-0**

Solder mount in .059 min. mounting hole  
For wire sizes up to 22 AWG



### SPECIFICATIONS:

**Shell Material:** Brass Alloy 360, 1/2 Hard

**Contact Material:** Beryllium Copper Alloy 172, HT

**Dimensions:** Inches

**Tolerances On:** Lengths: ±.005

Diameters: ±.002

Angles: ± 2°



**ORDER CODE: XXXX - X - XX - XX - XX - XX - XX - 0**

**BASIC PART #**

**SPECIFY SHELL FINISH:**

- 01 200 μ" TIN/LEAD OVER NICKEL
- ◆ 80 200 μ" TIN OVER NICKEL (RoHS)
- ◆ 15 10 μ" GOLD OVER NICKEL (RoHS)

**SPECIFY CONTACT FINISH:**

- 02 100 μ" TIN/LEAD OVER NICKEL
- ◆ 84 100 μ" TIN OVER NICKEL (RoHS)
- ◆ 27 30 μ" GOLD OVER NICKEL (RoHS)

**SELECT CONTACT:**

**#05, #11 or #21 CONTACT (DATA ON PAGE 251)**

(For alternate contact choices, see group A on page 248)



## X-ON Electronics

Largest Supplier of Electrical and Electronic Components

*Click to view similar products for [Terminals](#) category:*

*Click to view products by [Mill-Max](#) manufacturer:*

Other Similar products are found below :

[HT-13-10](#) [71M-250-32-NB](#) [01-2065-1-0216](#) [00581P0075](#) [M10-10RX](#) [M10BCK](#) [60205-1](#) [604200-1](#) [60598-1-CUT-TAPE](#) [60617-1-C](#) [60873-1](#) [M14-516R/SK](#) [M14-6RSX](#) [M18-10FLX](#) [M18-8FBX](#) [M18-8R/LX](#) [M18BCK](#) [61314-6-C](#) [61-S](#) [61-SN-A](#) [62-NBM-A](#) [63-S](#) [640179-1](#) [640917-2-CUT-TAPE](#) [6501550002](#) [66107-2-C](#) [696683-1](#) [696834-1](#) [696861-1](#) [696931-1](#) [696999-1](#) [M8-516RK](#) [M86700006](#) [MA250DMFMX-A](#) [701-2007](#) [701-2307](#) [701-7761-03](#) [70F-110-32-PB](#) [718-N-A](#) [71M-187-20-NBL](#) [71M-250-32-NBL](#) [72F-187-20-NBL](#) [72M-250-32-NBL](#) [7310](#) [73F-250-32](#) [73F-250-32-NBL](#) [73F-250-32-NL](#) [F14-10C](#) [F-1M](#) [751-250](#)