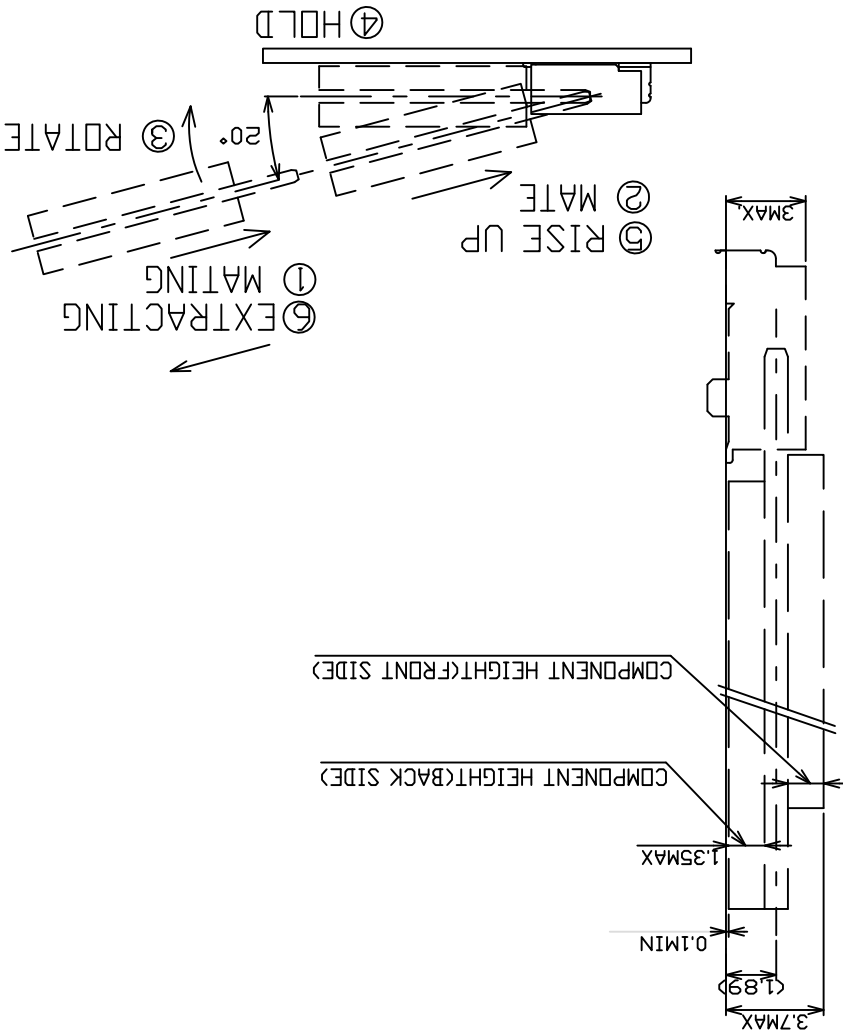
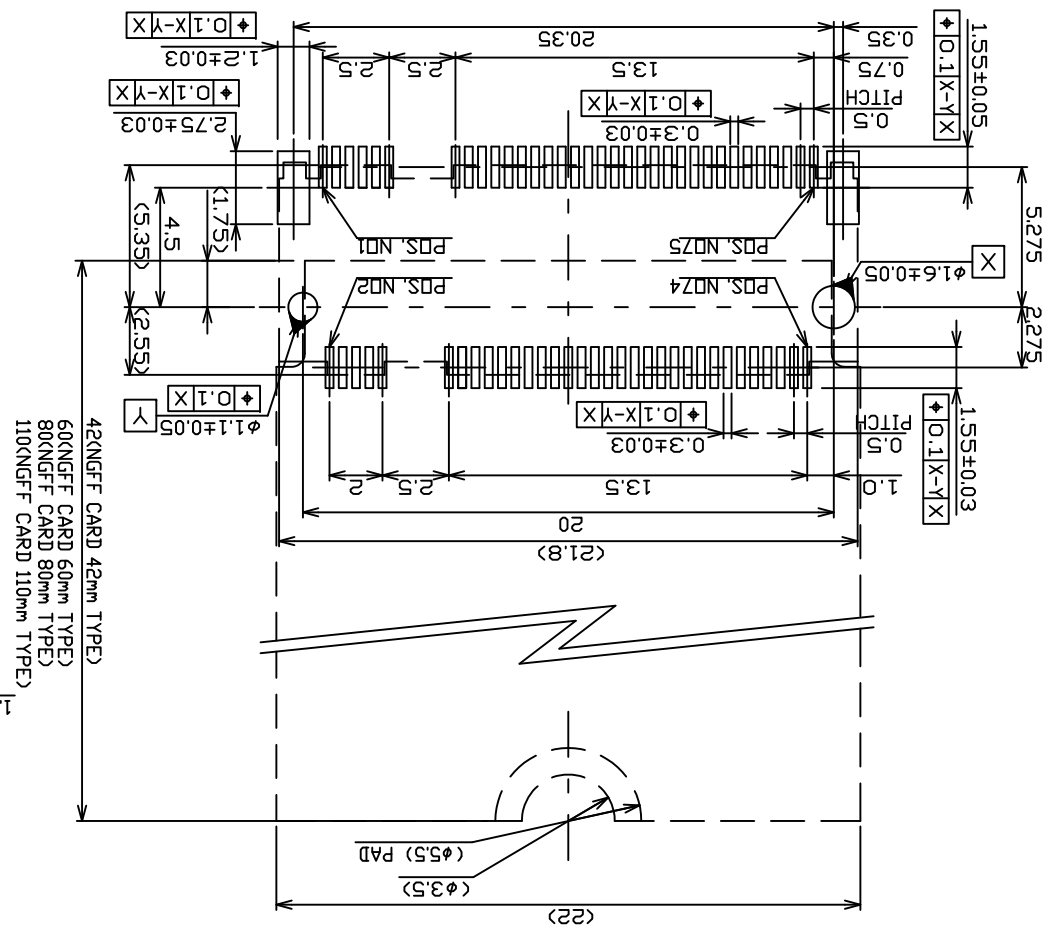




REV.	DESCRIPTION	DATE	REV.	DESCRIPTION	DATE	REV.	DESCRIPTION	DATE	REV.	DESCRIPTION	DATE
1			2			3			4		
△ Reverse:			△ Reverse:			△ Reverse:					
△ Reverse:			△ Reverse:			△ Reverse:					
△ Reverse:			△ Reverse:			△ Reverse:					
APPROVED	APPROVED	APPROVED	APPROVED	APPROVED	APPROVED	APPROVED	APPROVED	APPROVED	APPROVED	APPROVED	APPROVED
Ken	Ken	Ken	Ken	Ken	Ken	Ken	Ken	Ken	Ken	Ken	Ken
2013/12/09	2013/12/09	2013/12/09	2013/12/09	2013/12/09	2013/12/09	2013/12/09	2013/12/09	2013/12/09	2013/12/09	2013/12/09	2013/12/09
FILE NAME	FILE NAME	FILE NAME	FILE NAME	FILE NAME	FILE NAME	FILE NAME	FILE NAME	FILE NAME	FILE NAME	FILE NAME	FILE NAME
123A-32BA0-R01_B.1	123A-32BA0-R01	123A-32BA0-R01	123A-32BA0-R01	123A-32BA0-R01	123A-32BA0-R01	123A-32BA0-R01	123A-32BA0-R01	123A-32BA0-R01	123A-32BA0-R01	123A-32BA0-R01	123A-32BA0-R01
PRODUCT NO.	PRODUCT NO.	PRODUCT NO.	PRODUCT NO.	PRODUCT NO.	PRODUCT NO.	PRODUCT NO.	PRODUCT NO.	PRODUCT NO.	PRODUCT NO.	PRODUCT NO.	PRODUCT NO.
M.2 Connector Key B H:3.2mm	M.2 Connector Key B H:3.2mm	M.2 Connector Key B H:3.2mm	M.2 Connector Key B H:3.2mm	M.2 Connector Key B H:3.2mm	M.2 Connector Key B H:3.2mm	M.2 Connector Key B H:3.2mm	M.2 Connector Key B H:3.2mm	M.2 Connector Key B H:3.2mm	M.2 Connector Key B H:3.2mm	M.2 Connector Key B H:3.2mm	M.2 Connector Key B H:3.2mm
DRAWN NAME:	DRAWN NAME:	DRAWN NAME:	DRAWN NAME:	DRAWN NAME:	DRAWN NAME:	DRAWN NAME:	DRAWN NAME:	DRAWN NAME:	DRAWN NAME:	DRAWN NAME:	DRAWN NAME:
www.attend.com.tw	www.attend.com.tw	www.attend.com.tw	www.attend.com.tw	www.attend.com.tw	www.attend.com.tw	www.attend.com.tw	www.attend.com.tw	www.attend.com.tw	www.attend.com.tw	www.attend.com.tw	www.attend.com.tw
UNIT: mm	UNIT: mm	UNIT: mm	UNIT: mm	UNIT: mm	UNIT: mm	UNIT: mm	UNIT: mm	UNIT: mm	UNIT: mm	UNIT: mm	UNIT: mm
SCALE AS SHOWN	SCALE AS SHOWN	SCALE AS SHOWN	SCALE AS SHOWN	SCALE AS SHOWN	SCALE AS SHOWN	SCALE AS SHOWN	SCALE AS SHOWN	SCALE AS SHOWN	SCALE AS SHOWN	SCALE AS SHOWN	SCALE AS SHOWN
LINEAR	LINEAR	LINEAR	LINEAR	LINEAR	LINEAR	LINEAR	LINEAR	LINEAR	LINEAR	LINEAR	LINEAR
ANGLES	ANGLES	ANGLES	ANGLES	ANGLES	ANGLES	ANGLES	ANGLES	ANGLES	ANGLES	ANGLES	ANGLES
UNLESS OTHERWISE SPECIFIED TOLERANCE	UNLESS OTHERWISE SPECIFIED TOLERANCE	UNLESS OTHERWISE SPECIFIED TOLERANCE	UNLESS OTHERWISE SPECIFIED TOLERANCE	UNLESS OTHERWISE SPECIFIED TOLERANCE	UNLESS OTHERWISE SPECIFIED TOLERANCE	UNLESS OTHERWISE SPECIFIED TOLERANCE	UNLESS OTHERWISE SPECIFIED TOLERANCE	UNLESS OTHERWISE SPECIFIED TOLERANCE	UNLESS OTHERWISE SPECIFIED TOLERANCE	UNLESS OTHERWISE SPECIFIED TOLERANCE	UNLESS OTHERWISE SPECIFIED TOLERANCE
±0.05	±0.05	±0.05	±0.05	±0.05	±0.05	±0.05	±0.05	±0.05	±0.05	±0.05	±0.05
±0.3	±0.3	±0.3	±0.3	±0.3	±0.3	±0.3	±0.3	±0.3	±0.3	±0.3	±0.3
±0.25	±0.25	±0.25	±0.25	±0.25	±0.25	±0.25	±0.25	±0.25	±0.25	±0.25	±0.25
±0.20	±0.20	±0.20	±0.20	±0.20	±0.20	±0.20	±0.20	±0.20	±0.20	±0.20	±0.20



KEY ID "B"  
RECOMMENDED P.C. BOARD LAYOUT







## X-ON Electronics

Largest Supplier of Electrical and Electronic Components

*Click to view similar products for [Memory Card Connectors](#) category:*

*Click to view products by [Attend manufacturer](#):*

Other Similar products are found below :

[M10-597810-355](#) [M21-033321-005](#) [6426-201-21343](#) [69.920.0553.0](#) [MCR60A-98D-2.54DSA\(70\)](#) [FCN-568P068-G/07-4V](#) [809180410000000](#)  
[95622-003LF](#) [AD2-262F-38900-232](#) [DM3AT-SF-PEJM5\(41\)](#) [EN2997S72039F6](#) [N7E50-7516PG-20-WF](#) [IC11S-BUR-PNEJL\(71\)](#) [NX30TA-](#)  
[15PAA\(50\)](#) [21920-5](#) [2041353-2](#) [FUA006-3220-0](#) [308-DS1P0811-192](#) [33CFAE-DN](#) [MI21A-50PD-SF-EJR\(91\)](#) [502431-1011](#) [5175651-2](#) [10-](#)  
[247926-166](#) [10-629549-258N](#) [11327-001](#) [11327-002](#) [EN2997S02039B8](#) [EN2997S61212BN](#) [EN2997S72039B6](#) [EN2997SE02039B8](#)  
[EN2997SE61212BN](#) [EN2997SE72039B6](#) [603020000](#) [617230001](#) [71-252718-32P](#) [NX1-32T-KT3K\(05\)](#) [95622-003LF](#) [91-570124-15P](#)  
[192900-0488](#) [N7E50-U516RB-50-SIN0005](#) [DM1AA-SF-PEJ](#) [95079-00CALF](#) [84648-056HLF](#) [68-580163-21S](#) [33DVIR-29S12R](#)  
[SF58S006VBBR2000](#) [93-570123-08P](#) [GMC020080HR](#) [125A-78C00](#) [1010040575#](#)