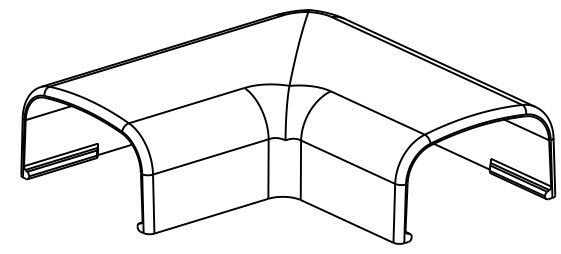
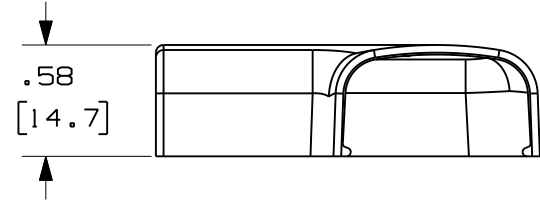
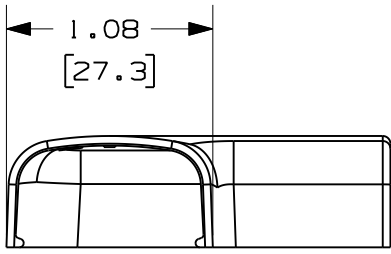
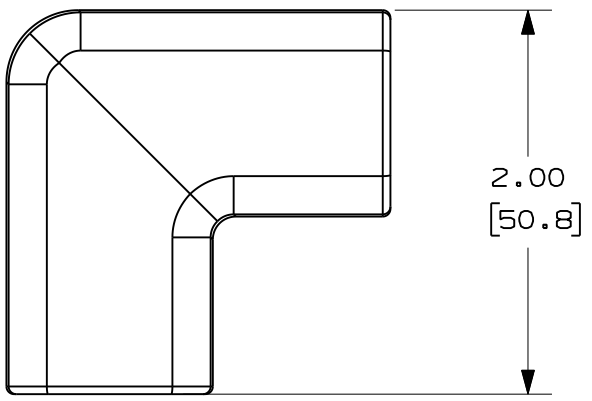


THIS COPY IS PROVIDED ON A RESTRICTED BASIS AND IS NOT TO BE USED IN ANY WAY DETRIMENTAL TO THE INTERESTS OF PANDUIT CORP.

$\triangle B$	PANDUIT P/N	WEIGHT
$\triangle C$	RAF5	1.20 LB/100 PCS. (540g/100 PCS.)



- $\triangle D$  NOTES:
1. SEE CURRENT CATALOG FOR ADDITIONAL PART NUMBER SUFFIXES TO INDICATE COLOR AND OR PACKAGE QUANTITY.
  2. DIMENSIONS IN PARENTHESIS ARE IN METRIC.

$\triangle E$

--	-----	--	--	RELEASED TO PRODUCTION	-----	--	--		CAD FILENAME/LAYERS	D34474BA_DC_RAF5/05A.prt		
7	5-30-08	BDK	RMHI	G. REVISED TO CURRENT CAD STANDARDS DRAWING # WAS SS-16865	34474-02	RTFI	RTFI		<b>PANDUIT</b> CORP. TINLEY PARK, ILLINOIS <b>RIGHT ANGLE FITTING (RAF5)</b> CUSTOMER DRAWING UNLESS OTHERWISE SPECIFIED, DIMENSIONAL TOLERANCES ARE: (.X) ± (.XXX) ± (.XX) ± .03 (.8) ANGLES ±			
6	7-8-02	JHNU	RMHI	F. REVISED MATERIAL IN DRAWING TITLE BLOCK.	16865	RGRO	RGRO					
5	8-28-00	MSO	HIW	E. REVISED AND REDRAWN ON CAD.	16865	HIW	HIW					
4	10-3-91	DW	CF	D. REVISED NOTE AND REMOVED COLOR FROM DRAWING.	16865		CF					
3	2-28-91	DW	CF	C. REVISED COLORS: OMIT BG, LI, LG. ADDED INT. WHITE AND INT. GRAY.	16865		WJB					
2	12-2-87	LDB	WJB	B. ADDED PART NUMBERS RAF5E1 AND RAF5L1.	16865		WJB		UNLESS OTHERWISE SPECIFIED, ALL DIMENSIONS ARE GIVEN IN INCHES, THIRD ANGLE PROJECTION.			
1	5-14-82	KJS	JK	A. POLYSTYRENE WAS ABS.			JAK		DRAWN BY KJS	MAT'L: ABS $\triangle F$ $\triangle G$	SCALE FULL	
R	9-14-81	KJS	HP	DRAWING RELEASED			HP		DATE 9-9-81		DRAWING NO. 34474-11	DWG A SIZE
REV	DATE	BY	CHK	DESCRIPTION	ECN	R	CUST	SUP	CHK'D JK $\triangle A$			

## X-ON Electronics

Largest Supplier of Electrical and Electronic Components

*Click to view similar products for [Wire Ducting](#) category:*

*Click to view products by [Panduit](#) manufacturer:*

Other Similar products are found below :

[66200A-10](#) [CVED32VEPG](#) [CVED40VEPG](#) [F512D5-5F140Y](#) [F512D5-5F200Y](#) [F512D5-5F26Y](#) [F512D5-5F30Y](#) [F512D5-5F33Y](#) [F512D5-5F34Y](#) [F512D5-5F45Y](#) [F512D5-5F50Y](#) [F512D5-5F54Y](#) [F512D5-5F66Y](#) [F512D5-5F70Y](#) [F512D5-5F75Y](#) [F512D5-5F90Y](#) [F612D5-5F100Y](#) [F612D5-5F130Y](#) [F612D5-5F50Y](#) [F612D5-5F56Y](#) [F612D5-5F58Y](#) [F6L12D5-5F46](#) [F912D5-5F11Y](#) [F912D5-5F170Y](#) [F912D5-5F175Y](#) [F912D5-5F230Y](#) [F912D5-5F300Y](#) [F912D5-5F55Y](#) [F912D5-5F56Y](#) [F912D5-5F63Y](#) [F912D5-5F6Y](#) [F912D5-5F75Y](#) [F912D5-5F85Y](#) [F912D5-5F86Y](#) [F912D5-5F88Y](#) [F912D5-5F96Y](#) [FAP0047WBLMTP](#) [FAP12WBRDRDDLZ](#) [FAP12WDYLYLDLZ](#) [FAP12WEORORDLZ](#) [FAP6WEORORDLZ](#) [FAP6WFDBDBDLZ](#) [FAP8WEORORDLZ](#) [FCE2UWCL](#) [800A-LB](#) [802A-ECSP](#) [802I-ICSP](#) [FJQADH](#) [FJQFXT](#) [PED10](#)