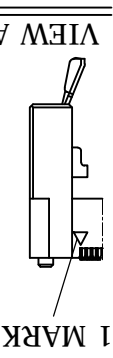
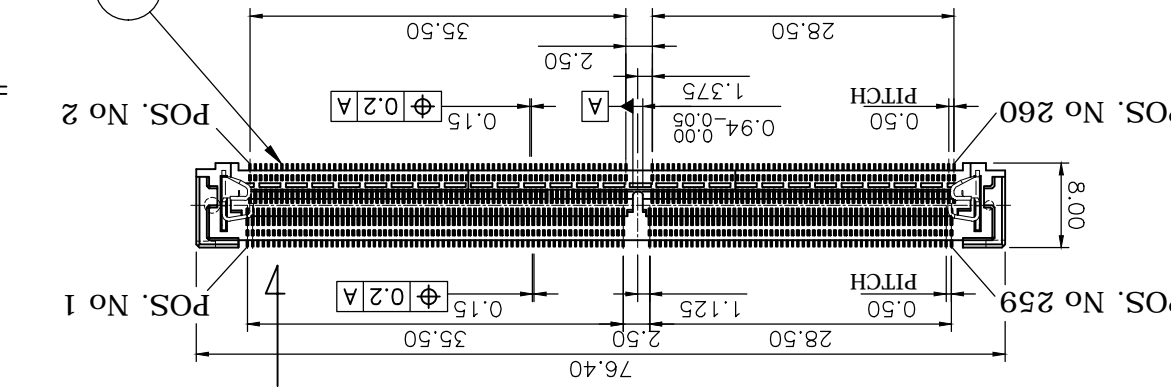
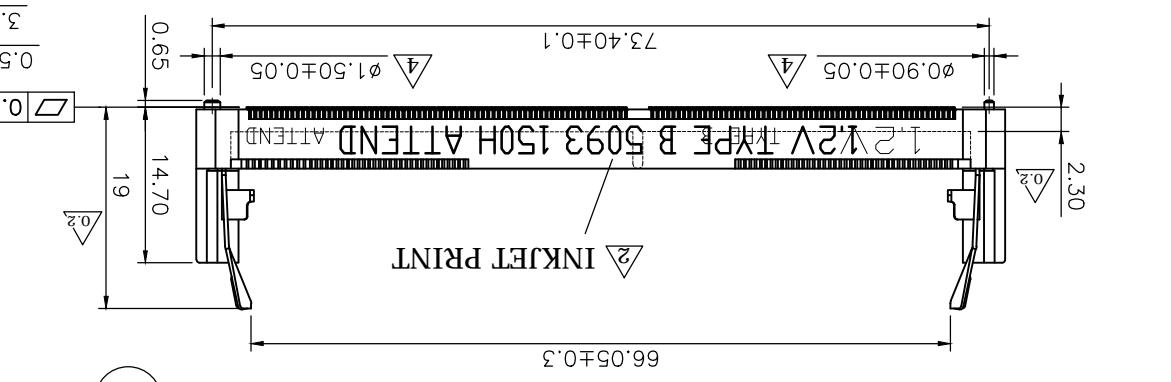
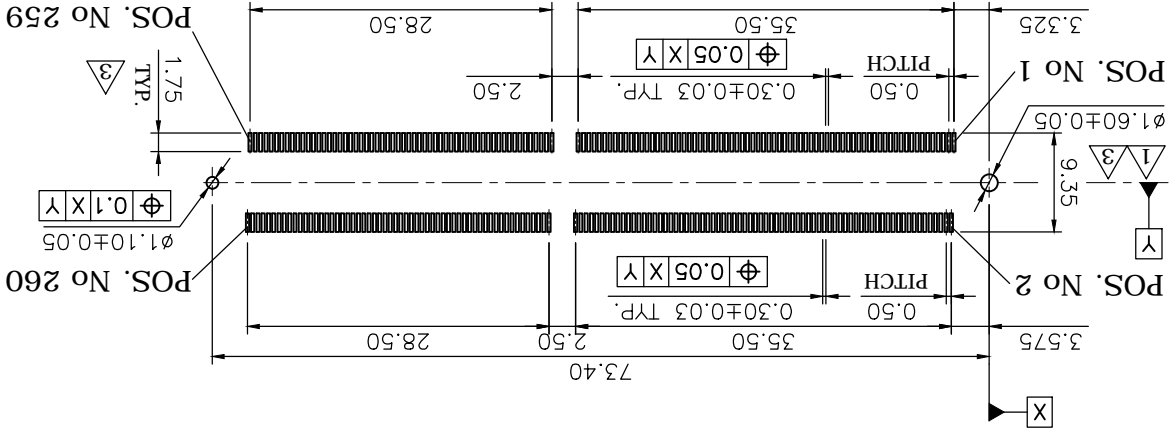
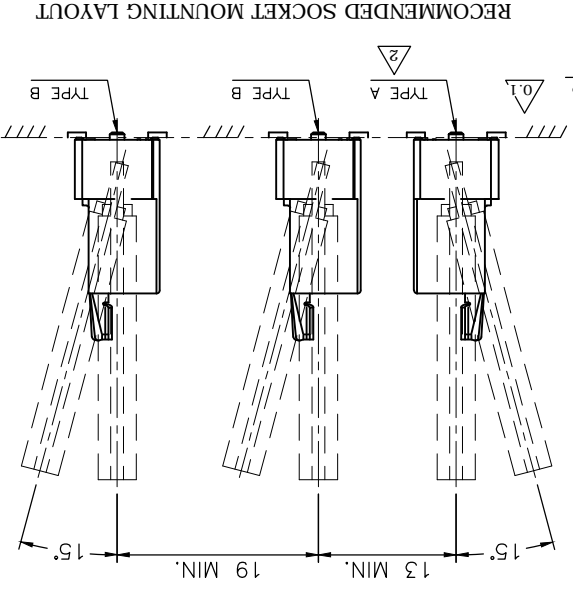


RECOMMEND LAYOUT (TOP VIEW)
GENERAL TOLERANCE: ± 0.10



VIEW A



OPERATING VOLTAGE
DATE CODE: 5093 (YWWD)
Y : YEAR (2015)
WW: WEEK (01-52)
D : DAY (1-7)
PRINT: 1.2V TYPE B 5093 150H ATTEND

REV.	DESCRIPTION	DRAWN	DATE
4	Revised Peg & Mylar dims.	FROS	2016/07/25
3	Revised layout 9.35 was 8.60	FROS	2016/05/30
2	Revised printing, misspelt word corrected.	FROS	2016/01/18

NO.	PART NAME	DESCRIPTION
1	HOUSING	LCP, U194V-0, BLACK
2	CONTACT	PHOSPHOR BRONZE, GOLD FLASH
3	LATCH	STAINLESS STEEL

UNIT:	DECIMAL	LINEAR	ANGLES
mm	X	± 0.50	$\pm 5^\circ$
	XX	± 0.25	$\pm 3^\circ$
	XXX	± 0.12	$\pm 1^\circ$

UNLESS OTHERWISE SPECIFIED TOLERANCE

DRAWN NAME:	FROS	2015/02/16
CHECKED	Ron	2015/02/16
APPROVED	Albert	2015/02/16

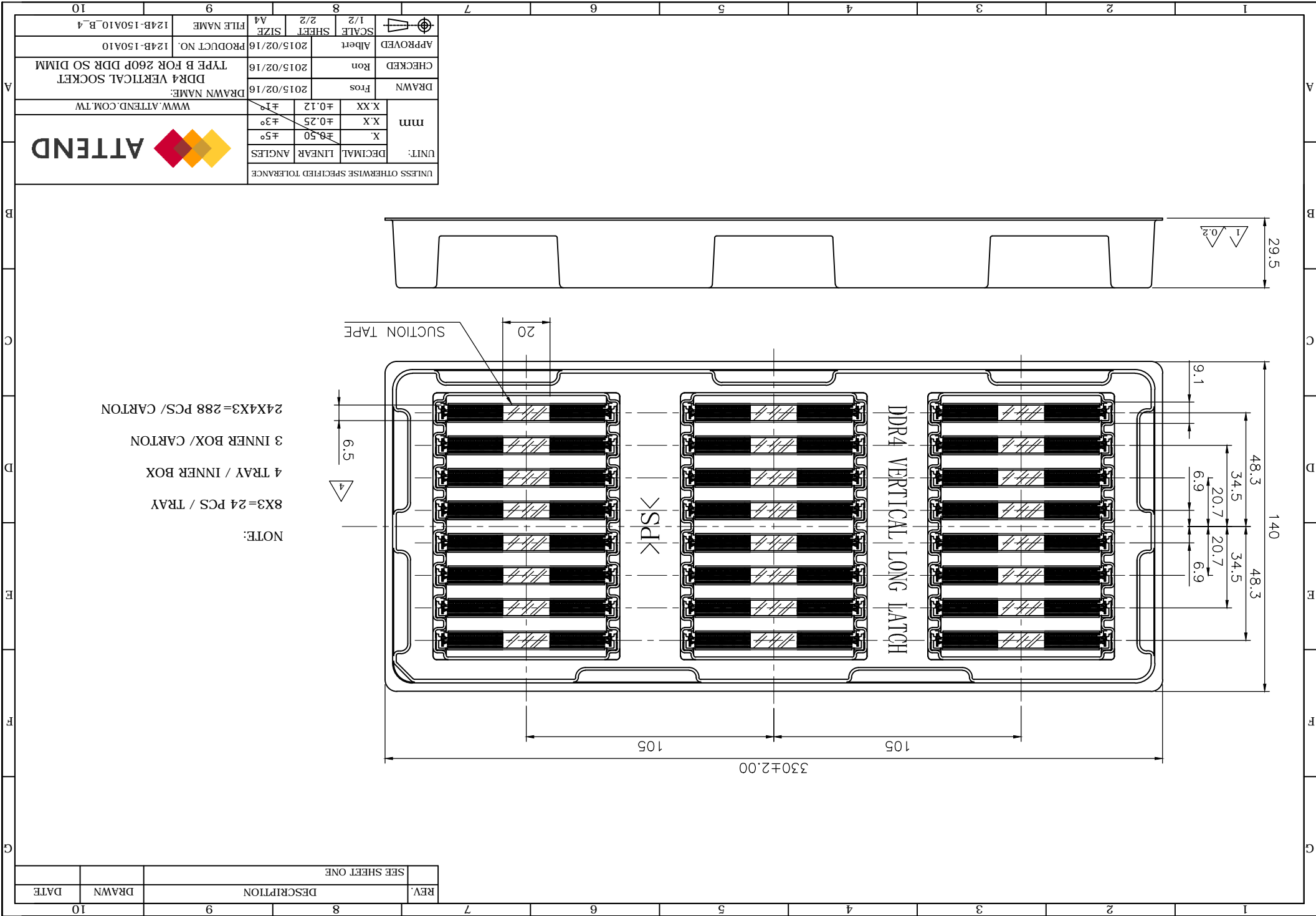
SCALE	SHEET	1/2	FILE NAME
1:4	1/2	1/2	124B-150A10_B_4

PRODUCT NO. 124B-150A10

DRWN NAME: DDR4 VERTICAL SOCKET TYPE B FOR 260P DDR SO DIMM

WWW.ATTEND.COM.TW

ATTEND



UNLESS OTHERWISE SPECIFIED TOLERANCE		DECIMAL	LINEAR	ANGLES	
UNIT:	mm	X	±0.50	±5°	
		X X	±0.25	±3°	
		X XX	±0.12	±1°	
DRAWN NAME: Fros		2015/02/16			
CHECKED: Ron		2015/02/16			
APPROVED: Albert		2015/02/16			
SCALE	1/2	SHEET	2/2	SIZE	A4
FILE NAME	124B-150A10_B_4				
PRODUCT NO.	124B-150A10				
DRAWN NAME: Fros		2015/02/16			
CHECKED: Ron		2015/02/16			
APPROVED: Albert		2015/02/16			
DRAWN NAME: Fros		2015/02/16			
CHECKED: Ron		2015/02/16			
APPROVED: Albert		2015/02/16			
SCALE		1/2	SHEET	2/2	SIZE
FILE NAME		124B-150A10_B_4			



NOTE:
 8X3=24 PCS / TRAY
 4 TRAY / INNER BOX
 3 INNER BOX / CARTON
 24X4X3=288 PCS / CARTON

REV.	DESCRIPTION	DRAWN	DATE
	SEE SHEET ONE		

X-ON Electronics

Largest Supplier of Electrical and Electronic Components

Click to view similar products for [Memory Card Connectors](#) category:

Click to view products by [Attend manufacturer](#):

Other Similar products are found below :

[M10-597810-355](#) [M21-033321-005](#) [6426-201-21343](#) [69.920.0553.0](#) [MCR60A-98D-2.54DSA\(70\)](#) [FCN-568P068-G/07-4V](#) [809180410000000](#)
[95622-003LF](#) [AD2-262F-38900-232](#) [DM3AT-SF-PEJM5\(41\)](#) [EN2997S72039F6](#) [N7E50-7516PG-20-WF](#) [IC11S-BUR-PNEJL\(71\)](#) [NX30TA-](#)
[15PAA\(50\)](#) [21920-5](#) [2041353-2](#) [FUA006-3220-0](#) [308-DS1P0811-192](#) [33CFAE-DN](#) [MI21A-50PD-SF-EJR\(91\)](#) [502431-1011](#) [5175651-2](#) [10-](#)
[247926-166](#) [10-629549-258N](#) [11327-001](#) [11327-002](#) [EN2997S02039B8](#) [EN2997S61212BN](#) [EN2997S72039B6](#) [EN2997SE02039B8](#)
[EN2997SE61212BN](#) [EN2997SE72039B6](#) [603020000](#) [617230001](#) [71-252718-32P](#) [NX1-32T-KT3K\(05\)](#) [95622-003LF](#) [91-570124-15P](#)
[192900-0488](#) [N7E50-U516RB-50-SIN0005](#) [DM1AA-SF-PEJ](#) [95079-00CALF](#) [84648-056HLF](#) [68-580163-21S](#) [33DVIR-29S12R](#)
[SF58S006VBBR2000](#) [93-570123-08P](#) [GMC020080HR](#) [125A-78C00](#) [1010040575#](#)