

UNLESS OTHERWISE NOTED		TITLE:	DWG NO:
DIMENSIONS ARE IN INCHES		LOW PROFILE	TLW-1XX-XX-XXX-X-XXX-XX
TOLERANCES ARE:		TERMINAL ASSEMBLY	EXISPROD/ASSEMBLY/100 TLWASM
ONE PLACE DECIMALS ±.1	THREE PLACE DECIMALS ± .005	ANGLES ± 2°	TLW-1XX-XX-XXX-X-XXX-XX
TWO PLACE DECIMALS ±.01	FOUR PLACE DECIMALS ± .0020		SHEET 1 OF 3

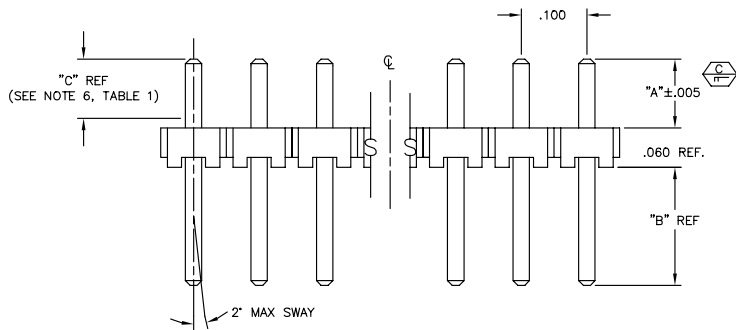
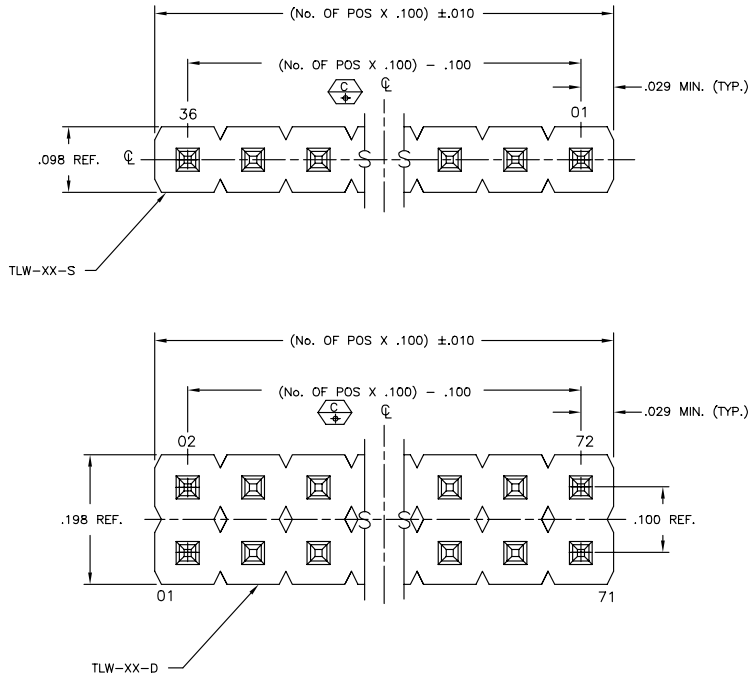


FIG. 1  
(THROUGH HOLE)

NOTES:

- 1.) MAX ALLOWABLE BOW AFTER ASSEMBLY: .005 IN/IN.
- 2.) TERMINAL PUSHOUT FORCE: 2 lbs. MIN.
- 3.) MAX PIN ROTATION IN BODY: 2°.
- 4.) Ⓢ REPRESENTS A CRITICAL DIMENSION.
- 5.) MAX CUT FLASH: .010.
- 6.) GOLD CONTACT AREA LOCATION FOR G, H, S, L, F, SM, LM, FM, & STL PLATINGS.
- 7.) Ⓢ ORIENTATE PINS TO PREVENT BANDOLIERY MARKS FROM SHOWING IN THE POST AREA. (SEE TABLE 2)

**PROPRIETARY NOTE**  
THIS DOCUMENT CONTAINS INFORMATION CONFIDENTIAL AND PROPRIETARY TO SAMTEC INC. AND SHALL NOT BE REPRODUCED OR TRANSFERRED TO OTHER DOCUMENTS OR DISCLOSED TO OTHERS OR USED FOR ANY PURPOSE OTHER THAN THAT FOR WHICH IT WAS OBTAINED WITHOUT THE EXPRESSED WRITTEN CONSENT OF SAMTEC INC.

TLW-1XX-XX-XXX-X-XXX-XX

**No. OF POSITIONS**  
-01 THRU -40 (SINGLE)  
-01 THRU -36 (DOUBLE)

**LEAD STYLE**  
-01: (RA) SEE FIG. 2  
-05: (TH) SEE TABLE 1  
-06: (TH) SEE TABLE 1

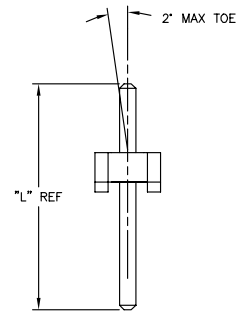
**PLATING SPECIFICATION**  
-G: GOLD (SPECIFY -G IN TERMINAL SUFFIX -XXX)  
-T: TIN (SPECIFY -T IN TERMINAL SUFFIX -XXX)  
-H: HEAVY GOLD (SPECIFY -H IN TERMINAL SUFFIX -XXX)  
-S: SELECTIVE (SPECIFY -S IN TERMINAL SUFFIX -XXX)  
-F: FLASH SELECTIVE (SPECIFY -F IN TERMINAL SUFFIX -XXX)  
-L: LIGHT SELECTIVE (SPECIFY -L IN TERMINAL SUFFIX -XXX)  
-TM: MATTE TIN (SPECIFY -T IN TERMINAL SUFFIX -XXX)  
-SM: SELECTIVE HEAVY GOLD, MATTE TIN TAIL (SPECIFY -S IN TERMINAL SUFFIX -XXX)  
-FM: FLASH SELECTIVE GOLD, MATTE TIN TAIL (SPECIFY -F IN TERMINAL SUFFIX -XXX)  
-LM: LIGHT SELECTIVE GOLD, MATTE TIN TAIL (SPECIFY -L IN TERMINAL SUFFIX -XXX)  
-STL: SELECTIVE GOLD, TIN/LEAD TAIL (SPECIFY -STL IN TERMINAL SUFFIX -XXX) (AVAILABLE IN STRAIGHT THROUGH HOLE VERSION ONLY)

**OPTIONS**  
-BLANK: THROUGH HOLE (SEE FIG 1)  
-RA: RIGHT ANGLE (LEAD STYLE -01 ONLY) (SEE FIG 2)  
-LL: TH WITH LOCKING LEADS (SEE FIG 4)  
-LA: RA WITH LOCKING LEADS (SEE FIG 3)

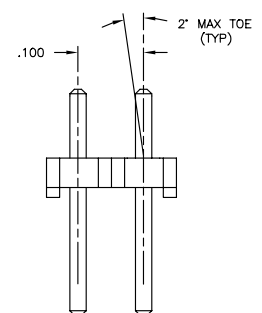
**POLARIZING SPECIFICATION**  
XXX INDICATES POS. TO BE OMITTED (IDENTIFY POSITION WITH FEET DOWN)

**ROW SPECIFICATION**  
-S: SINGLE ROW (USE TLW-XX-S)  
-D: DOUBLE ROW (USE TLW-XX-D)

LEAD	TERMINAL 1	TERMINAL 2	"L"	"A"	"B"	"C"
-05	T-1S6-21-XXX-2	N/A	.335	.105	.170	.050
-06	T-1S6-18-XXX-2	N/A	.300	.105	.135	.050
-01-S	T-1S6-22-XXX-2	N/A	.495	.230	N/A	.165
-01-D	T-1S6-22-XXX-2	-----	.495	.230	N/A	.165
-01-D	-----	T-1S6-23-XXX-2	.695	.230	N/A	.165



-S: SINGLE



-D: DOUBLE

MATERIAL:  
INSULATOR:  
LIQUID CRYSTAL POLYMER  
COLOR: BLACK

TERMINALS:  
PHOSPHOR BRONZE

520 PARK EAST BLVD. NEW ALBANY, INDIANA 47150  
PHONE (812) 944-6733 P.O. BOX 1147  
CODE 55322

MADE BY: M PUFFER 8-18-97

TLW-1XX-XX-XXX-X-XXX-XX  
SHEET 1 OF 3

## X-ON Electronics

Largest Supplier of Electrical and Electronic Components

*Click to view similar products for [Headers & Wire Housings](#) category:*

*Click to view products by [Samtec](#) manufacturer:*

Other Similar products are found below :

[95000-104TRLF](#) [10135584-644402LF](#) [DF62W-EP2022PCA](#) [95000-106TRLF](#) [DF62W-2022SCA](#) [DF62W-EP2022PC](#) [2203348](#) [DF62W-2022SC](#) [1084018](#) [1029039](#) [1084017](#) [802-10-012-10-002000](#) [1112640](#) [1112639](#) [000-34000](#) [0009482033](#) [0009507031](#) [57102-S06-03LF](#) [57202-S52-04LF](#) [PCN6-15S-2.5E](#) [0039019024](#) [58102-G61-06LF](#) [582553-1](#) [0009485154](#) [0009508121](#) [0022285053](#) [0050291907](#) [018731A](#) [LY20-4P-DT1-P1E-BR](#) [02.125.8002.8](#) [60101931](#) [60598-1 \(Cut Strip\)](#) [M1625-3R/100](#) [61062-3](#) [61082-181009](#) [636-1427](#) [638009-1](#) [641938-9](#) [641991-4](#) [644168-1](#) [647662-1](#) [65039-019ELF](#) [65817-002LF](#) [65817-015LF](#) [65863-015LF](#) [66207-023LF](#) [67016-026LF](#) [67046-001LF](#) [67095-007LF](#) [67230-005LF](#)