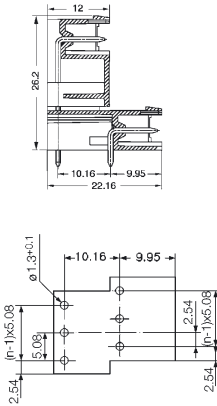
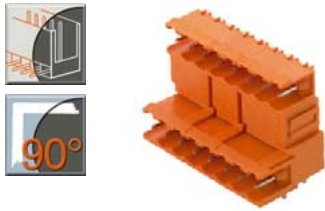


# Omnimate Range - Pitch 5.08 mm



## Pin headers SLD 5.08V/90

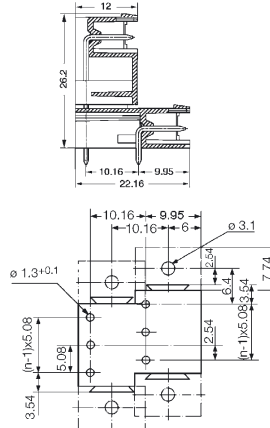
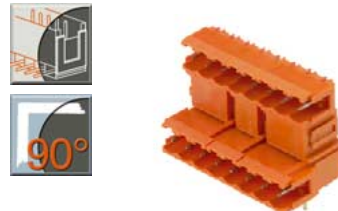


Technical Data		VDE	UL	CSA
Rated voltage	V	250*	300	300
Rated current	A	7	10	10

\*Overvoltage category III / Pollution severity 3  
Additional technical data see page 217

## Pin headers SLD 5.08V/90B

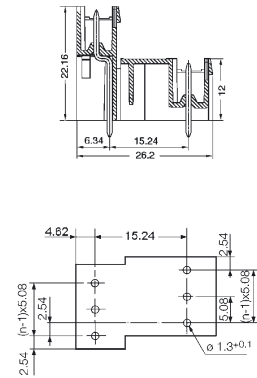
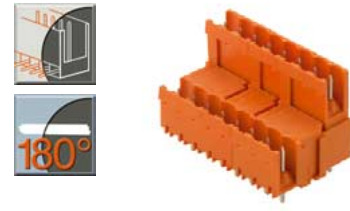
**new**



Technical Data		VDE	UL	CSA
Rated voltage	V	250*	300	300
Rated current	A	7	10	10

\*Overvoltage category III / Pollution severity 3  
Additional technical data see page 217

## Pin headers SLD 5.08V/180



Technical Data		VDE	UL	CSA
Rated voltage	V	250*	300	300
Rated current	A	7	10	10

\*Overvoltage category III / Pollution severity 3  
Additional technical data see page 217

Solder pin length		3.2 mm	4.5 mm		
Colour		●	●		
Poles	Type	Cat. No.	Cat. No.	Qty.	
4	SLD 5.08V/4/90	1725170000	1725420000	100	
6	SLD 5.08V/6/90	1725180000	1725430000	100	
8	SLD 5.08V/8/90	1725190000	1725440000	100	
10	SLD 5.08V/10/90	1725200000	1725450000	50	
12	SLD 5.08V/12/90	1725210000	1725460000	50	
14	SLD 5.08V/14/90	1725220000	1725470000	50	
16	SLD 5.08V/16/90	1725230000	1725480000	50	
18	SLD 5.08V/18/90	1725240000	1725490000	50	
20	SLD 5.08V/20/90	1725250000	1725500000	50	
22	SLD 5.08V/22/90	1725260000	1725510000	50	
24	SLD 5.08V/24/90	1725270000	1725520000	50	
26	SLD 5.08V/26/90	1725280000	1725530000	50	
28	SLD 5.08V/28/90	1725290000	1725540000	50	
30	SLD 5.08V/30/90	1725300000	1725550000	50	
32	SLD 5.08V/32/90	1725310000	1725560000	50	
34	SLD 5.08V/34/90	1725320000	1725570000	50	
36	SLD 5.08V/36/90	1725330000	1725580000	20	
38	SLD 5.08V/38/90	1725340000	1725590000	20	
40	SLD 5.08V/40/90	1725350000	1725600000	20	
42	SLD 5.08V/42/90	1725360000	1725610000	20	
44	SLD 5.08V/44/90	1725370000	1725620000	20	
46	SLD 5.08V/46/90	1725380000	1725630000	20	
48	SLD 5.08V/48/90	1725390000	1725640000	20	

Accessories	Page
Fixing	194
Marking	196
Coding	199
Miscellaneous	-

Solder pin length		3.2 mm	4.5 mm		
Colour		●	●		
Poles	Type	Cat. No.	Cat. No.	Qty.	
4	SLD 5.08V/4/90B	1726280000	1726510000	100	
6	SLD 5.08V/6/90B	1726290000	1726520000	100	
8	SLD 5.08V/8/90B	1726300000	1726530000	100	
10	SLD 5.08V/10/90B	1726310000	1726540000	50	
12	SLD 5.08V/12/90B	1726320000	1726550000	50	
14	SLD 5.08V/14/90B	1726330000	1726560000	50	
16	SLD 5.08V/16/90B	1726340000	1726570000	50	
18	SLD 5.08V/18/90B	1726350000	1726580000	50	
20	SLD 5.08V/20/90B	1726360000	1726590000	50	
22	SLD 5.08V/22/90B	1726370000	1726600000	50	
24	SLD 5.08V/24/90B	1726380000	1726610000	50	
26	SLD 5.08V/26/90B	1726390000	1726620000	50	
28	SLD 5.08V/28/90B	1726400000	1726630000	50	
30	SLD 5.08V/30/90B	1726410000	1726640000	50	
32	SLD 5.08V/32/90B	1726420000	1726650000	50	
34	SLD 5.08V/34/90B	1726430000	1726660000	50	
36	SLD 5.08V/36/90B	1726440000	1726670000	20	
38	SLD 5.08V/38/90B	1726450000	1726680000	20	
40	SLD 5.08V/40/90B	1726460000	1726690000	20	
42	SLD 5.08V/42/90B	1726470000	1726700000	20	
44	SLD 5.08V/44/90B	1726480000	1726710000	20	
46	SLD 5.08V/46/90B	1726490000	1726720000	20	
48	SLD 5.08V/48/90B	1726500000	1726730000	20	

Accessories	Page
Fixing	194
Marking	196
Coding	199
Miscellaneous	-

Solder pin length		3.2 mm	4.5 mm		
Colour		●	●		
Poles	Type	Cat. No.	Cat. No.	Qty.	
4	SLD 5.08V/4/180	1725650000	1725880000	100	
6	SLD 5.08V/6/180	1725660000	1725890000	100	
8	SLD 5.08V/8/180	1725670000	1725900000	100	
10	SLD 5.08V/10/180	1725680000	1725910000	50	
12	SLD 5.08V/12/180	1725690000	1725920000	50	
14	SLD 5.08V/14/180	1725700000	1725930000	50	
16	SLD 5.08V/16/180	1725710000	1725940000	50	
18	SLD 5.08V/18/180	1725720000	1725950000	50	
20	SLD 5.08V/20/180	1725730000	1725960000	50	
22	SLD 5.08V/22/180	1725740000	1725970000	50	
24	SLD 5.08V/24/180	1725750000	1725980000	50	
26	SLD 5.08V/26/180	1725760000	1725990000	50	
28	SLD 5.08V/28/180	1725770000	1726000000	50	
30	SLD 5.08V/30/180	1725780000	1726010000	50	
32	SLD 5.08V/32/180	1725790000	1726020000	50	
34	SLD 5.08V/34/180	1725800000	1726030000	50	
36	SLD 5.08V/36/180	1725810000	1726040000	20	
38	SLD 5.08V/38/180	1725820000	1726050000	20	
40	SLD 5.08V/40/180	1725830000	1726060000	20	
42	SLD 5.08V/42/180	1725840000	1726070000	20	
44	SLD 5.08V/44/180	1725850000	1726080000	20	
46	SLD 5.08V/46/180	1725860000	1726090000	20	
48	SLD 5.08V/48/180	1725870000	1726100000	20	

Accessories	Page
Fixing	194
Marking	196
Coding	199
Miscellaneous	-

## X-ON Electronics

Largest Supplier of Electrical and Electronic Components

*Click to view similar products for [weidmuller](#) manufacturer:*

Other Similar products are found below :

[8924550000](#) [56956](#) [0133660000](#) [6720000227](#) [6720005111](#) [68676](#) [69718](#) [EXO24CH](#) [7760056058](#) [7760056078](#) [7760056086](#) [7760056101](#)  
[7760056297](#) [7760056343](#) [7760056348](#) [7940000218](#) [8005181001](#) [8008180000](#) [8432240000](#) [8463580000](#) [8545830000](#) [8689870000](#)  
[8705640000](#) [9001080000](#) [9003720000](#) [9004250000](#) [9004780000](#) [9013260000](#) [9014100000](#) [9019040000](#) [9019060000](#) [9026010000](#)  
[9028630000](#) [903708](#) [9037350000](#) [9046290000](#) [9129643500](#) [913155](#) [9159530000](#) [919656](#) [919764](#) [9202230000](#) [9202850000](#) [9456750000](#)  
[9457913000](#) [980811](#) [980826](#) [9912800003](#) [9916080000](#) [9916280012](#)