

PRODUCT NUMBER
5 3 6 1 1 - X X X X - X

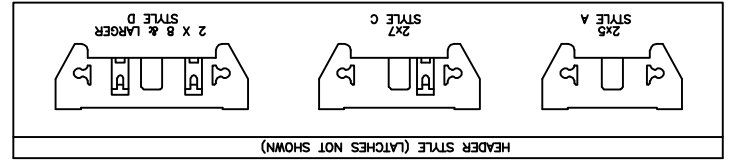
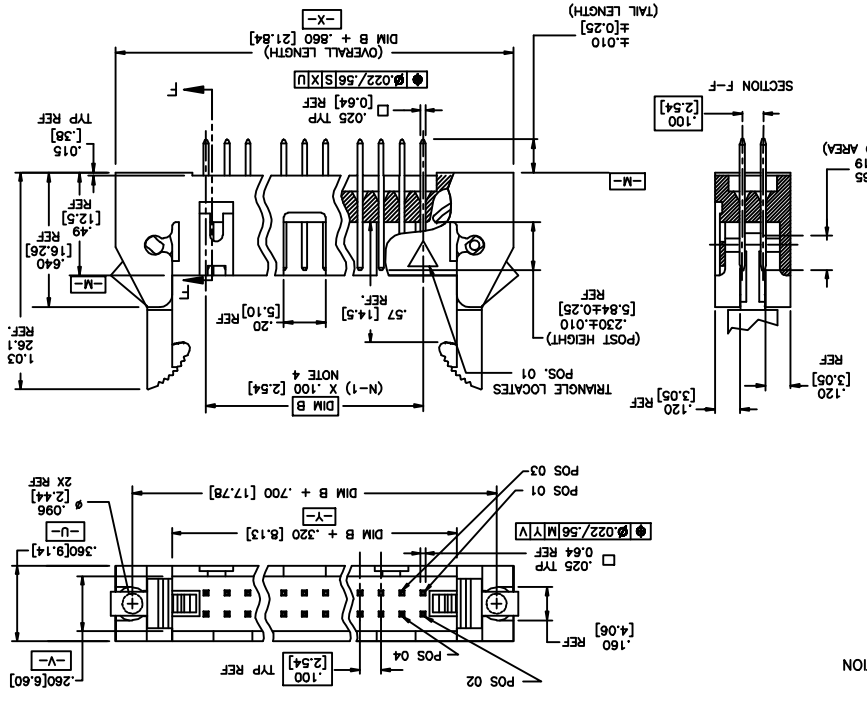
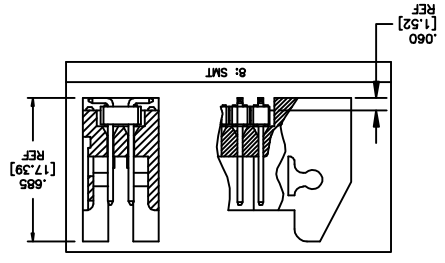
PLATING
S=15µ" [0.38µm] GOLD ON CONTACT AREA (NOTE 12)
100µ" [2.54µm] TIN ON TAIL
R= RETENTION LEG
LEAD FREE OPTION
NOTE 9.10

RETENTION
NOTE 5

POLARIZATION
NOTE 8

TAIL LENGTH
OBS. 1= .086/2.16
OBS. 2= .112/2.84
4= .120/3.05
6= .150/3.81
7= .675/17.15
8= SMT

DASH NO.	POSITIONS	HEADER STYLE
10	2 X 5	A
14	2 X 7	C
16	2 X 8	D
20	2 X 10	D
26	2 X 13	D
34	2 X 17	D
40	2 X 20	D
50	2 X 25	D



mat'l code	surface	ISO 802	ISO 406	ISO 9001	projection	product family	QUICKIE
ltf	ecm no	df	date	variances unless otherwise specified			title
D	V02309	MEM	9/11/00	angles	linear	scale	1:1
E	C10004	MPF	2/26/01	0 ±.2	linear	scale	1:1
F	M05-0089	ERE	5/20/05	XXXXX/000/XXXXXXX			SHORUNDED VERTICAL HEADER
G	M07-0116	AGS	2/19/07	D. INGRAM			sheet 1 of 2 size
H	M08-0010	MHT	1/11/08	L. GREEN			53611
J	M08-0237	MHT	8/26/08	L. GREEN			Product Customer Drawing
K	M08-0273	MHT	9/26/08	L. GREEN			Product Customer Drawing
sheet	revision	sheet	index				
1	K	1	2				
2	K	2					

D C B A

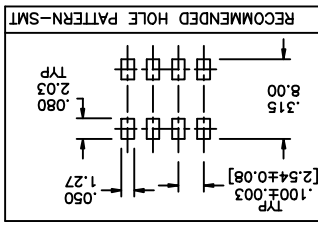
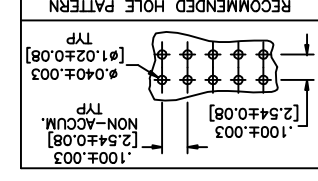
Copyright FCI

FCIconnect.com



mat'l code	surface ISO 902 tolerance unless otherwise specified	ISO 146	ISO 101	projection	product family	QUICKIE	title	
K	angles linear	XXX.00/XXX.13	XXX.05/XXX.13	INCH/MM				
lit	ecn no	dr	date					
0.7±.2	0.7±.2	XXXX.00/XXXX.05	XXXX.00/XXXX.05	scale 1:1				
dr	D. INGRAM	7/21/99	7/21/99	dwg no	53611	sheet 2 of 2 size	A3	
engr	L. GREEN	7/21/99	7/21/99	type	Product Customer Drawing			
appd	L. GREEN	7/21/99	7/21/99					
revision								
sheet								
index								

- NOTES:
- HOUSING MAT'L: HIGH TEMPERATURE THERMOPLASTIC. UL94V-0.
COLOR : BLACK
 - PIN MATERIAL: PHOSPHOR-BRONZE
 - 3 LBS/1.36 KG MIN. RETENTION.
 - TO DETERMINE DIMENSIONS:
N = NUMBER OF POSITIONS.
EXAMPLE: 10 POS., (N-1) x .100[2.54]=.900[22.87]
 - RETENTIVE LEG:
RETENTIVE LEG APPLICABLE TO TAIL LENGTH .120/3.05 ONLY.
RETENTION IS APPLIED TO FOUR PINS ON PART SIZES OF 2x14 AND SMALLER,
AND APPLIED TO EIGHT PINS ON PARTS SIZES OF 2x15 AND LARGER.
5LB/2.3KG MAX INSERTION FORCE AND .25LB/.11KG MIN RETENTION FORCE
PER RETENTIVE PIN USING .062/1.57 THICK CIRCUIT BOARD AND RECOMMENDED
HOLE PATTERN, RETENTIVE LOCATION AT THE DISCRETION OF THE MANUFACTURER.
6. PACKAGED IN TRAYS.
7. UNDERPLATING: 50µ"/1.27µm Ni.
 - FOR POLARIZATION, SPECIFY POSITION NUMBER (1... 03= PIN 3) TO OMIT PIN.
OMIT FROM PRODUCT NUMBER IF THIS FEATURE IS NOT APPLICABLE.
 - ADD "L" SUFFIX AT THE END OF PART NUMBER FOR LEAD FREE OPTION.
 - THIS PRODUCT MEETS EUROPEAN UNION DIRECTIVES AND OTHER COUNTRY REGULATION AS DESCRIBED IN GS-22-008.
11. THE HOUSING WILL WITHSTAND EXPOSURE TO 260°C PEAK TEMPERATURE FOR 15 SECONDS IN A WAVE SOLDER APPLICATION WITH A 1.5mm MINIMUM THICK CIRCUIT BOARD. SEE APPLICATION NOTES/PROCEDURES IF THEY ARE AVAILABLE.
THE HOUSING WILL WITHSTAND EXPOSURE TO 260°C PEAK TEMPERATURE FOR 20 SECONDS IN A CONVECTION, INFRA-RED OR VAPOR PHASE REFLOW OVEN. SEE APPLICATION NOTES/PROCEDURES IF THEY ARE AVAILABLE.
 - MAY BE EITHER GOLD OR GXT PLATED AT MANUFACTURER'S OPTION.
PLATING OPTIONS:



6 5 4 3 2 1 6

X-ON Electronics

Largest Supplier of Electrical and Electronic Components

Click to view similar products for [Headers & Wire Housings](#) category:

Click to view products by [Amphenol](#) manufacturer:

Other Similar products are found below :

[95000-104TRLF](#) [10135584-644402LF](#) [DF62W-EP2022PCA](#) [95000-106TRLF](#) [DF62W-2022SCA](#) [DF62W-EP2022PC](#) [2203348](#) [DF62W-2022SC](#) [1084018](#) [1029039](#) [1084017](#) [802-10-012-10-002000](#) [1112640](#) [1112639](#) [000-34000](#) [0009482033](#) [0009507031](#) [57102-S06-03LF](#) [57202-S52-04LF](#) [PCN6-15S-2.5E](#) [0039019024](#) [58102-G61-06LF](#) [582553-1](#) [0009485154](#) [0009508121](#) [0022285053](#) [0050291907](#) [018731A](#) [LY20-4P-DT1-P1E-BR](#) [02.125.8002.8](#) [60101931](#) [60598-1 \(Cut Strip\)](#) [M1625-3R/100](#) [61062-3](#) [61082-181009](#) [636-1427](#) [638009-1](#) [641938-9](#) [641991-4](#) [644168-1](#) [647662-1](#) [65039-019ELF](#) [65817-002LF](#) [65817-015LF](#) [65863-015LF](#) [66207-023LF](#) [67016-026LF](#) [67046-001LF](#) [67095-007LF](#) [67230-005LF](#)