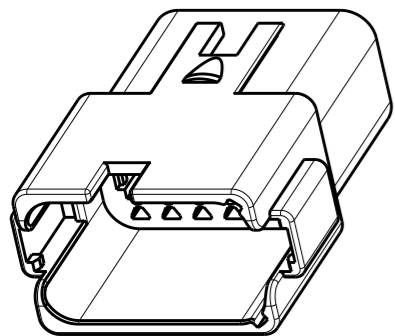
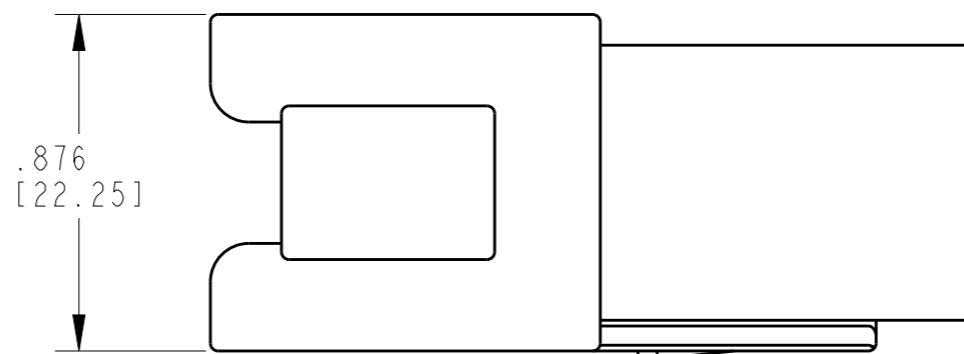


THIS DRAWING IS UNPUBLISHED
RELEASED FOR PUBLICATION
2015
© COPYRIGHT 2000 BY TE CONNECTIVITY ALL RIGHTS RESERVED.

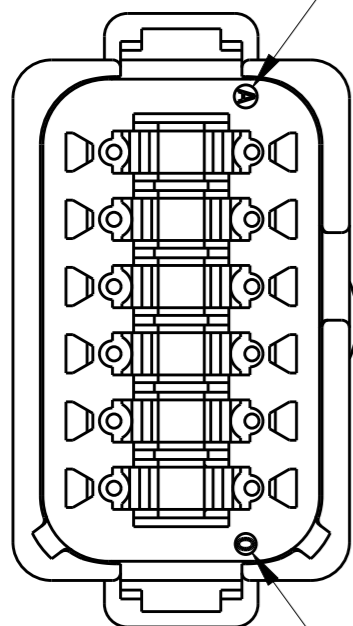
LOC		DIST		REVISIONS			
P	LTR	DESCRIPTION	DATE	DWN	APVD		
	NC	NEW RELEASE PER E.O. P16570	07MAR2000	ST	DM		
	A	REVISED PER E.O. P16863	15SEP2000	TY	RDR		
	A1	REVISED PER ECO-15-016593	05NOV2015	JA	DM		



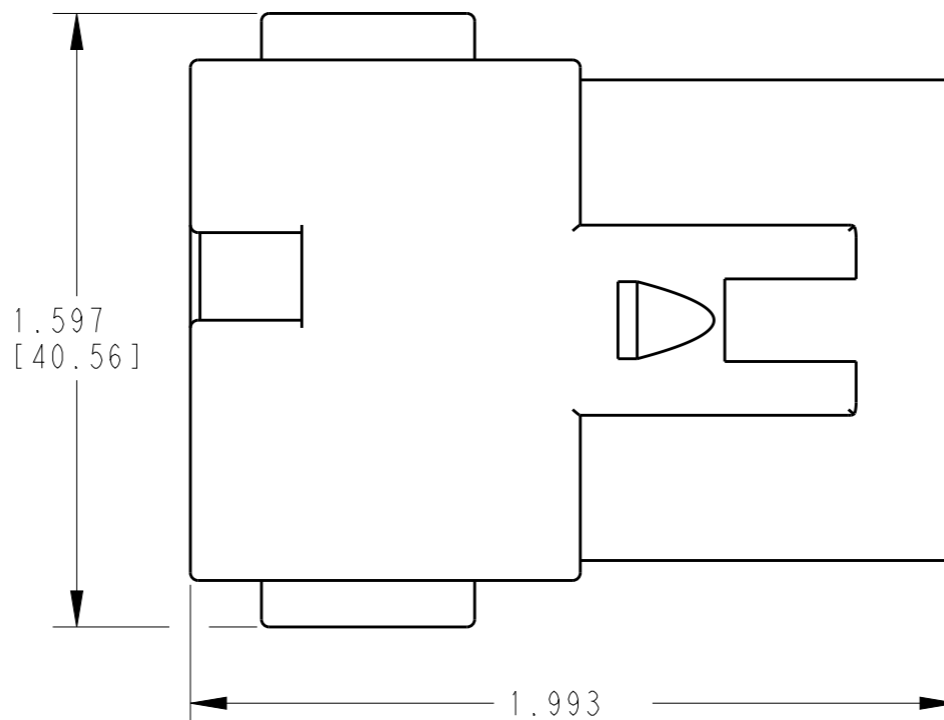
SCALE 1:1



.876
[22.25]

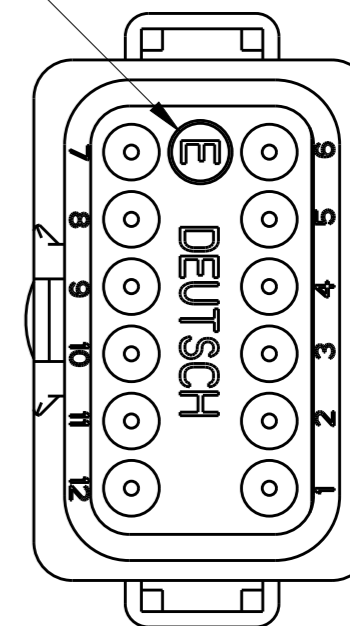


EX. OF MONTH JANUARY



1.597
[40.56]

-E- DESIGNATES REDUCED DIAMETER WIRE SEAL



RECEPTACLE HOUSING

EX. OF YEAR 2020



1.993
[50.62]

TE INTERNAL PN	DEUTSCH PN
DT04-12PB-CE08	DT04-12PB-CE08

CONTACT SIZE	MIN. INSUL O.D.	MAX. INSUL O.D.	WIRE RANGE
16	.053 [1.34]	.120 [3.04]	14-20 AWG [2.0-0.5 mm ²]

3 DATE LEGEND: YEARS TO BE REPRESENTED BY LAST NUMERICAL DIGIT. MONTH USES SEQUENTIAL ALPHA CHARACTERS, EX: A = JANUARY ...

2 MATERIAL: HOUSING: PA66 GF15 (BLACK); GROMMET: SILICONE (RED-ORANGE)

1. THIS RECEPTACLE MATES WITH DT06-12SB-XXXX PLUG. (XXXX = ALL MODIFICATIONS). CONSULT FACTORY FOR MODIFICATIONS.

NOTES: UNLESS OTHERWISE SPECIFIED

THIS DRAWING IS A CONTROLLED DOCUMENT.		DWN S. THEIS 01MAR2000		
DIMENSIONS: INCHES [mm]		CHK PAUL BURKE 15SEP2000		
TOLERANCES UNLESS OTHERWISE SPECIFIED:		APVD STEVE BEARD 15NOV2000	NAME RECEPTACLE 12 WAY -CE08 MOD, -B- KEY DT SERIES	
0 PLC ±		PRODUCT SPEC 108-151009	SIZE A3	
1 PLC ±		APPLICATION SPEC 0425-017-0000	CAGE CODE 4AFU8	DRAWING NO DT04-12PB-CE08
2 PLC ±		WEIGHT 18.0g	RESTRICTED TO -	
3 PLC ±.025 [0.64]		CUSTOMER DRAWING		
4 PLC ±		SCALE 2:1		
ANGLES ±1/2°		SHEET 1 OF 1		
FINISH N/A		REV A1		

X-ON Electronics

Largest Supplier of Electrical and Electronic Components

Click to view similar products for [Automotive Connectors](#) category:

Click to view products by [TE Connectivity](#) manufacturer:

Other Similar products are found below :

[003-018-000](#) [600858](#) [60403001](#) [60993906-B](#) [60993913-B](#) [629515004020001](#) [M902-2131](#) [M902-2161](#) [M902-2344](#) [72.330.1035.1](#)
[73.353.4028.0](#) [F118010](#) [F119300-B](#) [F132210](#) [F132210-B](#) [F166900](#) [F180100](#) [F258300](#) [F258300-B](#) [F294300-B](#) [F339100](#) [F339700](#) [F358300-](#)
[B](#) [F374110](#) [F407400](#) [F412210](#) [F427600](#) [F444110](#) [F487000](#) [F495100-B](#) [F500900-B](#) [F509500B-B](#) [770444-1](#) [776880-1](#) [827153-1](#) [881735-1](#)
[8N1515-32-24P](#) [9-1326727-8](#) [9-1326729-8](#) [925467-1](#) [925474-1](#) [928905-1](#) [936398-2](#) [964562-1](#) [964562-4](#) [964731-2](#) [965051-1](#) [968782-1](#)
[GT17SA-8DS-HU](#) [GT17VS-10DP-5.2CF](#)