

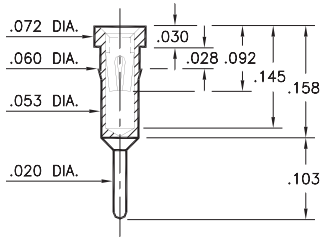
PIN RECEPTACLES

FOR .015" - .025" DIAMETER PINS

4011

4011-0-15-XX-30-XX-04-0

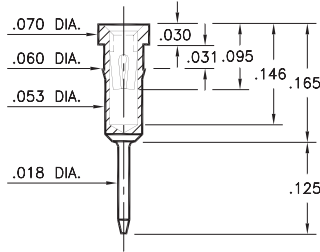
Press-fit in .057 mounting hole



1801

1801-0-15-XX-30-XX-04-0

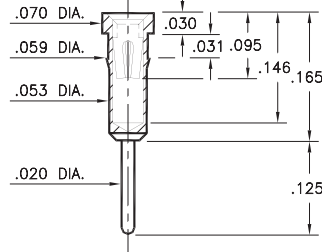
Press-fit in .057 mounting hole.
Shell is Phosphor Bronze Alloy 544 (B2)



1001

1001-0-15-XX-3X-XX-04-0

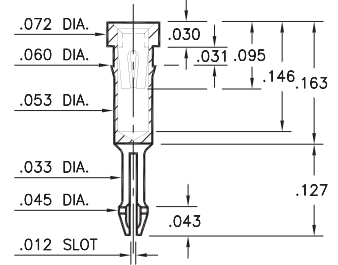
Press-fit in .057 mounting hole



0156

0156-0-18-XX-30-XX-04-0

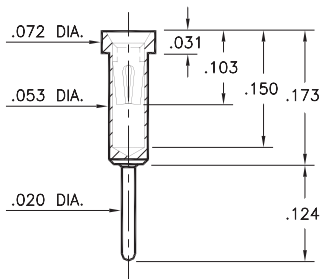
Self-retention socket pin .038 - .043 hole prior to soldering



0255

0255-0-15-XX-30-XX-04-0

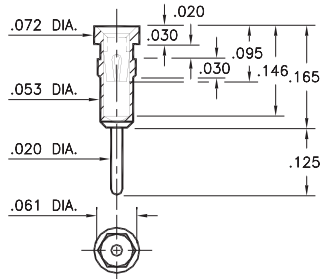
Solder mount in .022 min. mounting hole



1109

1109-0-15-XX-30-XX-04-0

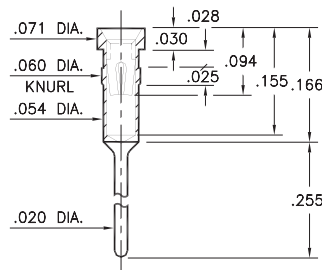
Hex press-fit in .057 plated through-hole



3013

3013-0-15-XX-32-XX-04-0

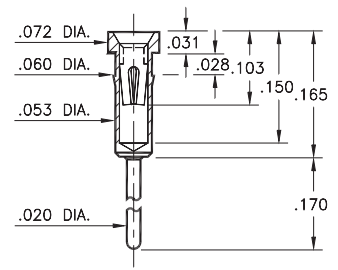
Press-fit in .057 mounting hole



0134

0134-0-15-XX-3X-XX-04-0

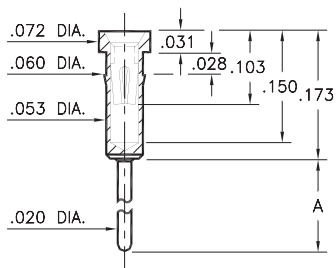
Press-fit in .057 mounting hole



0132/0135

013X-0-15-XX-30-XX-04-0

Press-fit in .057 mounting hole

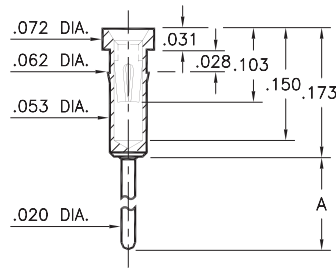


| Basic Part Number | Length A |
|-------------------|----------|
| 0132-0 | .273 |
| 0135-0 | .183 |

0133/0147

01XX-0-15-XX-30-XX-04-0

Press-fit in .059 mounting hole



| Basic Part Number | Length A |
|-------------------|----------|
| 0133-0 | .382 |
| 0147-0 | .563 |

SPECIFICATIONS:

Shell Material: Brass Alloy 360, 1/2 Hard

Contact Material: Beryllium Copper Alloy 172, HT

Dimensions: Inches

Tolerances On: Lengths: ±.005
Diameters: ±.002
Angles: ± 2°



ORDER CODE: XXXX - X - 15 - XX - XX - XX - 10 - 0

BASIC PART #

SPECIFY SHELL FINISH:

- 01 200 μ" TIN/LEAD OVER NICKEL
- ◆ 80 200 μ" TIN OVER NICKEL (RoHS)
- ◆ 15 10 μ" GOLD OVER NICKEL (RoHS)

SPECIFY CONTACT FINISH:

- 02 100 μ" TIN/LEAD OVER NICKEL
- ◆ 84 100 μ" TIN OVER NICKEL (RoHS)
- ◆ 27 30 μ" GOLD OVER NICKEL (RoHS)

SELECT CONTACT:

#30 or #32 CONTACT (DATA ON PAGE 253)

(For alternate contact choices, see groups B and C on page 248)



X-ON Electronics

Largest Supplier of Electrical and Electronic Components

Click to view similar products for [Terminals](#) category:

Click to view products by [Mill-Max](#) manufacturer:

Other Similar products are found below :

[HT-13-10](#) [71M-250-32-NB](#) [01-2065-1-0216](#) [00581P0075](#) [M10-10RX](#) [M10BCK](#) [60205-1](#) [604200-1](#) [60598-1-CUT-TAPE](#) [60617-1-C](#) [60873-1](#) [M14-516R/SK](#) [M14-6RSX](#) [M18-10FLX](#) [M18-8FBX](#) [M18-8R/LX](#) [M18BCK](#) [61314-6-C](#) [61-S](#) [61-SN-A](#) [62-NBM-A](#) [63-S](#) [640179-1](#) [640917-2-CUT-TAPE](#) [6501550002](#) [66107-2-C](#) [66107-4-C](#) [696683-1](#) [696834-1](#) [696861-1](#) [696931-1](#) [696999-1](#) [M8-516RK](#) [M86700006](#) [MA250DMFMX-A](#) [701-2007](#) [701-2307](#) [701-7761-03](#) [70F-110-32-PB](#) [718-N-A](#) [71M-187-20-NBL](#) [71M-250-32-NBL](#) [72F-187-20-NBL](#) [72M-250-32-NBL](#) [7310](#) [73F-250-32](#) [73F-250-32-NBL](#) [73F-250-32-NL](#) [F14-10C](#) [F-1M](#)