

PRODUCT NUMBER

73347-Y04LF

PLATING _____ ROHS COMPATIBLE, SEE NOTE 5

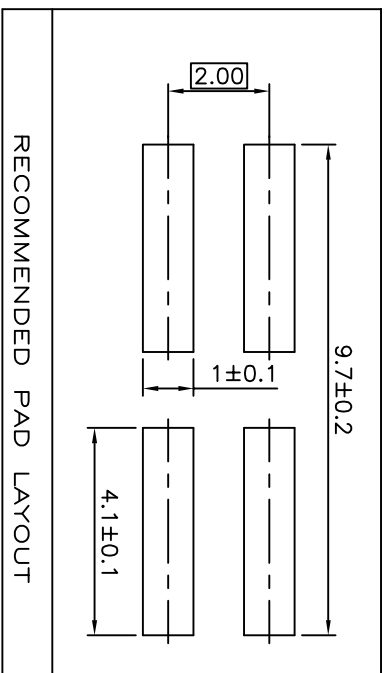
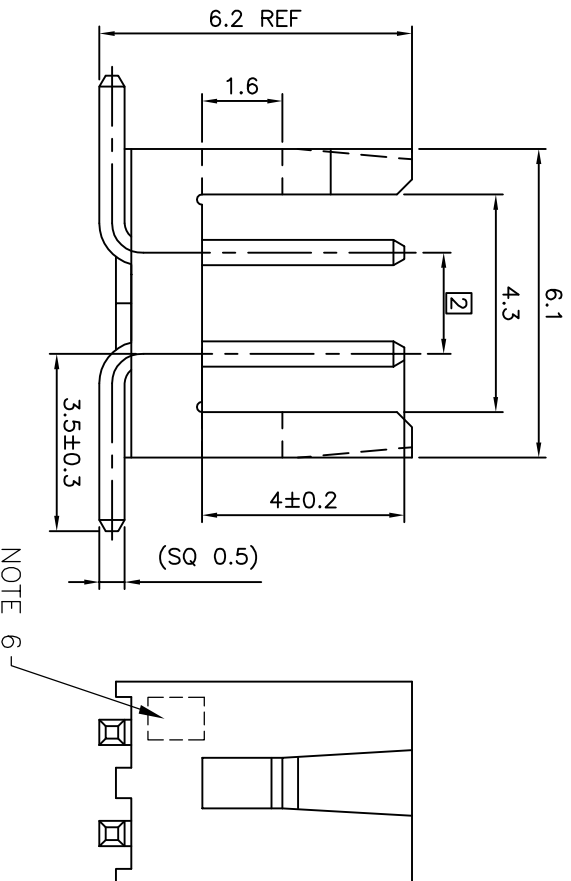
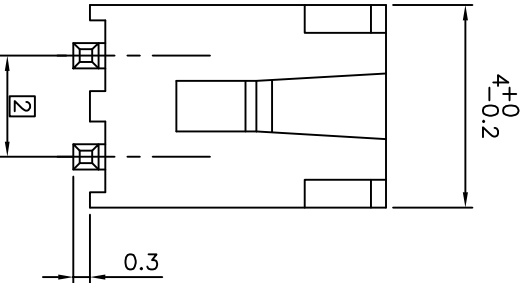
1XX = 0.76µm GOLD/GXT ON CONTACT AREA
2µm MIN MATT TIN ON TAIL

7XXLF = 0.76µm GOLD/GXT FULL PLATED
OVER 1.27µm Ni MIN

1.27µm MINIMUM NICKEL UNDERPLATE

NOTES :

1. MATERIAL HOUSING: HIGH TEMP. THERMOPLASTIC
UL 94V-0, COLOR CREAM
 2. MATERIAL TERMINAL: COPPER ALLOY
 3. 7N MIN. PIN RETENTION IN EITHER DIRECTION.
 4. STANDARD PACKAGING IN POLYBAGS:
 5. ROHS COMPATIBLE PRODUCT SPECIFICATIONS
 - d - PLATING:
 - "LF" MEANS THE PRODUCT IS LEAD-FREE,
2µm MINIMUM MATTE TIN OVER 1.27µm
MINIMUM NICKEL UNDERPLATE.
 - b - MANUFACTURING PROCESS COMPATIBILITY
 - THE HOUSING WILL WITHSTAND EXPOSURE TO
260°C PEAK TEMPERATURE FOR 30 SECONDS
MAX IN A CONVECTION, INFRA-RED OR VAPOR
PHASE OR REFLOW OVEN.
 - c - LABELLING:
 - MEETS PACKAGING SPECS AS PER GS-14-920
 - d - THIS PRODUCT MEETS EUROPEAN DIRECTIVES
AND OTHER COUNTRY REGULATIONS AS DISCRIBED
IN GS-47-0004.
6. PIN POS 1 RECOMMENDED ON THIS SIDE TO MATCH WITH
HOUSING CODING.



RECOMMENDED PAD LAYOUT

mat'l. code	SEE NOTES	surface	tolerance	projection	product
ltr	ecm no dr date	ISO 1302	ISO 406	ISO 101	family
K	B-19190 LMU 14.10.24	tolerances unless otherwise specified		mm	MINITEK HEADER
E	F06-0268 LMU 06.08.09	linear		scale 6:1	
F	F07-0191 JCO 07.09.05 dr	JCOMPAGNON	97.11.25		MINITEK HEADER 2x2
G	F08-0143 EIA 15.04.08 eng				dwg no 73347
H	F11-0078 LMU 11.06.29 chr				sheet 1 of 1 size A3
J	F12-0018 JCO 12.02.27 app	JMC	98.03.20		CUSTOMER Drawing
sheet	revision				
index	sheet				

X-ON Electronics

Largest Supplier of Electrical and Electronic Components

Click to view similar products for [Headers & Wire Housings](#) category:

Click to view products by [Amphenol](#) manufacturer:

Other Similar products are found below :

[95000-104TRLF](#) [10135584-644402LF](#) [DF62W-EP2022PCA](#) [95000-106TRLF](#) [DF62W-2022SCA](#) [DF62W-EP2022PC](#) [2203348](#) [DF62W-2022SC](#) [1084018](#) [1029039](#) [1084017](#) [802-10-012-10-002000](#) [1112640](#) [1112639](#) [000-34000](#) [0008550134](#) [0009482033](#) [0009507031](#) [57102-F02-18ULF](#) [57102-S06-03LF](#) [57202-S52-04LF](#) [PCN6-15S-2.5E](#) [0039019024](#) [58102-G61-06LF](#) [582553-1](#) [0009485154](#) [0009508121](#) [0022285053](#) [0050291907](#) [018731A](#) [LY20-4P-DT1-P1E-BR](#) [02.125.8002.8](#) [60101931](#) [60598-1 \(Cut Strip\)](#) [M1625-3R/100](#) [61062-3](#) [61082-181009](#) [CSU011177004](#) [636-1427](#) [638009-1](#) [641938-9](#) [641991-4](#) [644168-1](#) [644827-2](#) [647662-1](#) [65039-019ELF](#) [65692-001LF](#) [65781-018](#) [65781-047](#) [65817-002LF](#)