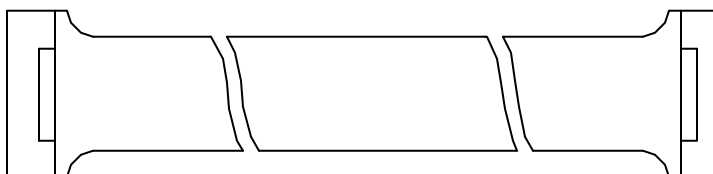
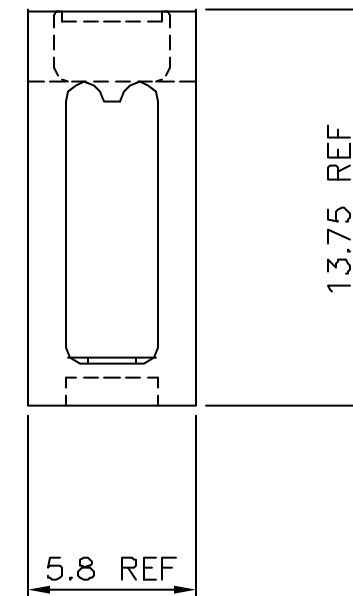
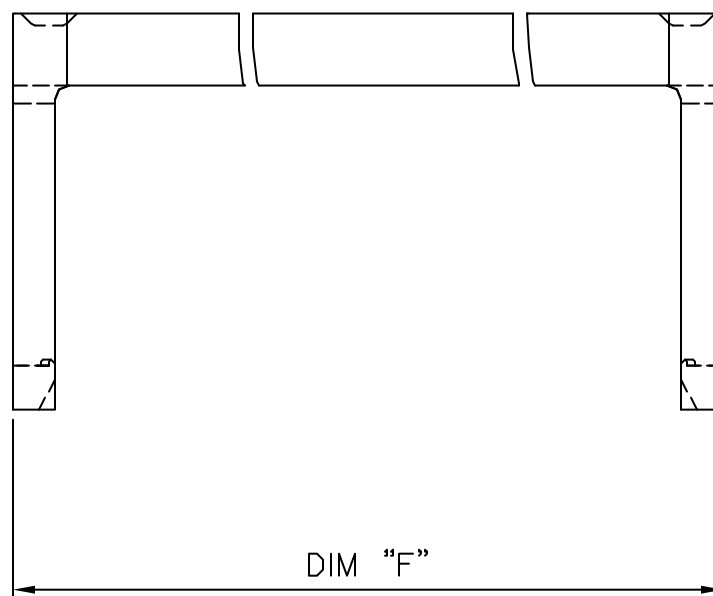
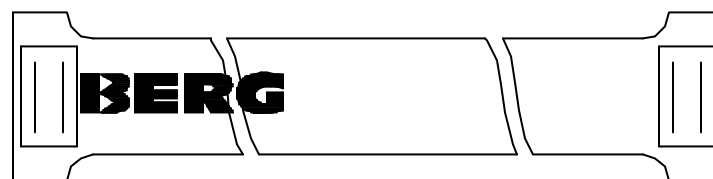


PRODUCT NUMBER
67045-0XXLF

INDICATES THE PRODUCT IS RoHS
COMPATIBLE, SEE NOTE 2

STYLE	SIZE	DIM "F"
06	2x 3	12.00
08	2x 4	14.54
10	2x 5	17.08
14	2x 7	22.16
16	2x 8	24.70
18	2x 9	27.24
20	2x10	29.78
26	2x13	37.40
30	2x15	42.48
34	2x17	47.56
40	2x20	55.18
44	2x22	60.26
50	2x25	67.88
60	2x30	80.58
64	2x32	85.66



NOTES:

1. MOLDING MATERIAL UNFILLED POLYESTER
FLAME RETARDANT PER UL-94-V0
COLOR GREY
2. RoHS COMPATIBLE PRODUCT
 - a - LABELLING:
 - MEETS PACKAGING SPECS AS PER GS-14-920
 - b - LEGAL STATEMENT: SEE GS-22-008
 - c - THE PRODUCT IS NOT INTENDED TO BE EXPOSED
TO MANUFACTURING SOLDER PROCESS
 - d - PRODUCT MEETS WITH EU 2002/EG/95

mat'l. code		surface		tolerance		projection		product family	
SEE NOTE 1		ISO 1302 ✓		ISO 406 ISO 1101		mm		QKIE III	
ltr	ecn no	dr	date	tolerances unless otherwise specified		mm		title	
B	F80632	PNZ	98.10.16	angles	.X ±0.3	mm		STRAIN RELIEF	
C	F05-0255	LMU	05.10.11	Linear	.XX ±0.15	mm		LOW PROFILE	
D	F06-0270	LMU	06.09.12		.XXX ±0.05	scale 1:4		dwg no	
E	F06-0274	LMU	06.10.18	dr	LMULIN	05.10.11		sheet 1 of 1	
				engr	J.COMPAGNON	05.10.11		size	
				chr				67045	
				appd	JM.C	05.10.11		A3	
sheet	revision							type	
index	sheet							CUSTOMER Drawing	

X-ON Electronics

Largest Supplier of Electrical and Electronic Components

Click to view similar products for [Headers & Wire Housings](#) category:

Click to view products by [Amphenol](#) manufacturer:

Other Similar products are found below :

[95000-104TRLF](#) [10135584-644402LF](#) [DF62W-EP2022PCA](#) [95000-106TRLF](#) [DF62W-2022SCA](#) [DF62W-EP2022PC](#) [2203348](#) [DF62W-2022SC](#) [1084018](#) [1029039](#) [1084017](#) [802-10-012-10-002000](#) [1112640](#) [1112639](#) [000-34000](#) [0009482033](#) [0009507031](#) [57102-S06-03LF](#) [57202-S52-04LF](#) [PCN6-15S-2.5E](#) [0039019024](#) [58102-G61-06LF](#) [582553-1](#) [0009485154](#) [0009508121](#) [0022285053](#) [0050291907](#) [018731A](#) [LY20-4P-DT1-P1E-BR](#) [02.125.8002.8](#) [60101931](#) [60598-1 \(Cut Strip\)](#) [M1625-3R/100](#) [61062-3](#) [61082-181009](#) [636-1427](#) [638009-1](#) [641938-9](#) [641991-4](#) [644168-1](#) [647662-1](#) [65039-019ELF](#) [65817-002LF](#) [65817-015LF](#) [65863-015LF](#) [66207-023LF](#) [67016-026LF](#) [67046-001LF](#) [67095-007LF](#) [67230-005LF](#)