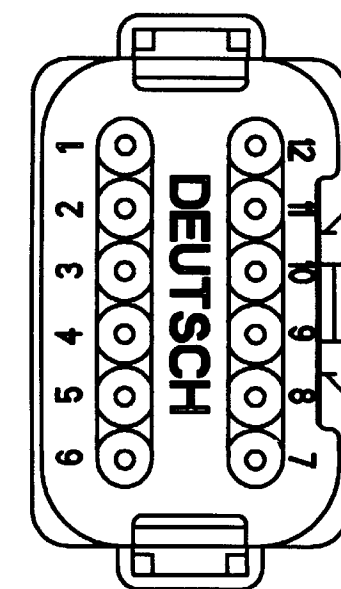
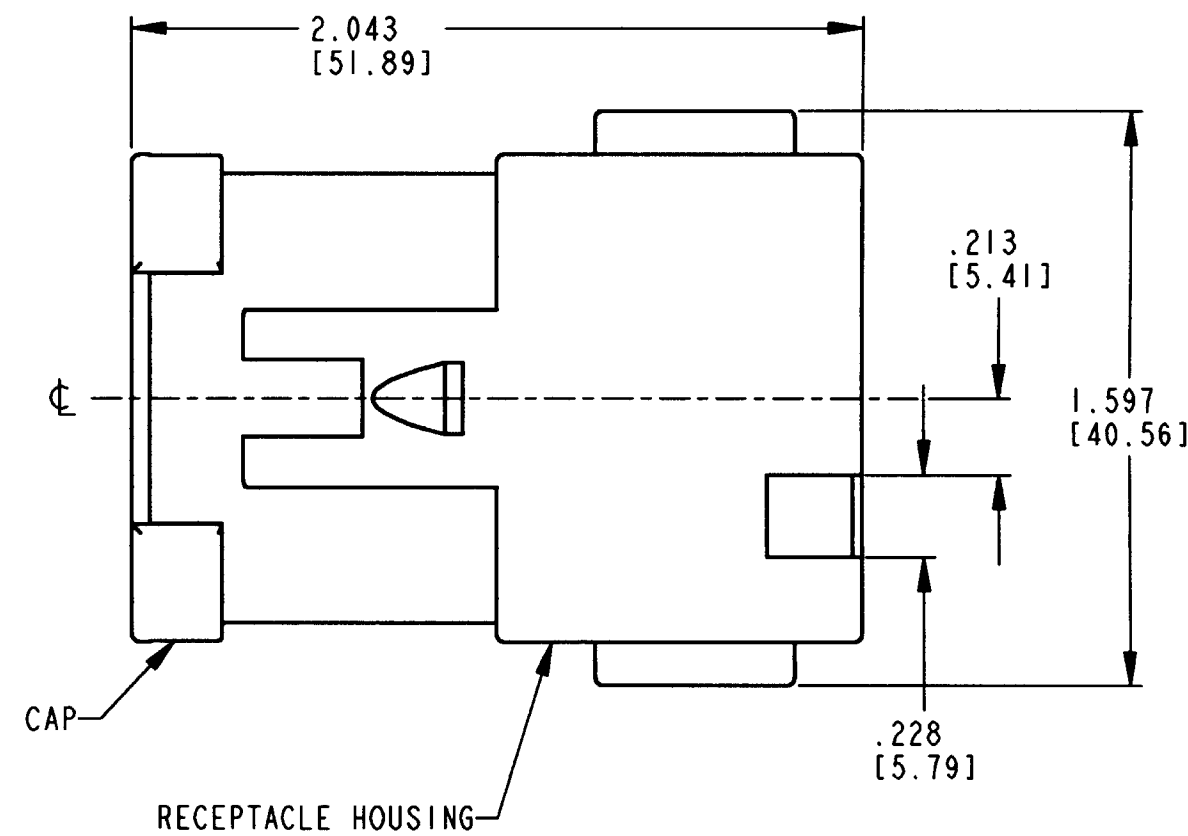
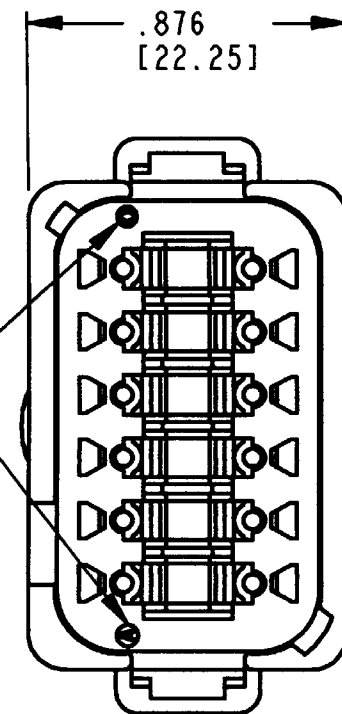


REV
A DT04-12PC-BE02

| REVISIONS | | | |
|-----------|-----------------------------|----------|----------|
| SYM | DESCRIPTION | DATE | APPROVED |
| NC | NEW RELEASE PER E.O. P16010 | 5/14/99 | R.D.R |
| A | REVISED PER E.O. P17545 | 12-10-01 | RDR |

DATE CODE: YEAR IS REPRESENTED BY LAST NUMERICAL DIGIT. EX: 0=2000. MONTH IS REPRESENTED BY SEQUENTIAL ALPHA CHARACTERS. EX: A=JANUARY.



| CONTACT SIZE | MIN. INSUL O.D. | MAX. INSUL O.D. | WIRE RANGE [mm ²] REF ONLY |
|--------------|-----------------|-----------------|----------------------------------------|
| 16 | .088 [2.24] | .145 [3.68] | 14-20 AWG [2.0-0.5] |

4. THIS RECEPTACLE MATES WITH THE DT06-12SC-**** PLUG (**** = ALL MODIFICATIONS). CONSULT FACTORY FOR MODIFICATIONS.

3. FOR CONTACTS AND WIRE PERFORMANCE AND APPLICATION CHARACTERISTICS SEE ENVELOPE DRAWING 0425-015-0000 AND 0425-017-0000.

2. DIMENSIONS ARE ±.025[0.64] UNLESS OTHERWISE SPECIFIED.

1. DIMENSIONS ARE IN INCHES [MILLIMETERS].

NOTES:

| SIGNATURE & DATE | |
|------------------|--------------------|
| DR | D. SPENCER 02APR99 |
| CHK | J. G... 12/4/01 |
| PE | ... 12/4/01 |
| APPD | S... 12-4-01 |
| SCALE | NONE WT |

12 WAY RECEPTACLE
EXTRA KEY W/ CAP
-BE02 MOD.
-C- ARRANGEMENT
DT SERIES

ENVELOPE

| CP | MATL CODE |
|--------------------------------------------------------------------------------------------|-----------------------|
| The Deutch Company DEUTSCH I.P.D. 3850 INDUSTRIAL AVE. HEMET, CALIF. 92545 | |
| B | DT04-12PC-BE02 |
| DWG SIZE | CODE SHEET OF |

X-ON Electronics

Largest Supplier of Electrical and Electronic Components

Click to view similar products for [Automotive Connectors](#) category:

Click to view products by [TE Connectivity](#) manufacturer:

Other Similar products are found below :

[003-018-000](#) [600858](#) [60403001](#) [60993906-B](#) [60993913-B](#) [629515004020001](#) [M902-2131](#) [M902-2161](#) [M902-2344](#) [72.330.1035.1](#)
[73.353.4028.0](#) [F118010](#) [F119300-B](#) [F132210](#) [F132210-B](#) [F166900](#) [F180100](#) [F258300](#) [F258300-B](#) [F294300-B](#) [F339100](#) [F339700](#) [F358300-](#)
[B](#) [F374110](#) [F407400](#) [F412210](#) [F427600](#) [F444110](#) [F487000](#) [F495100-B](#) [F500900-B](#) [F509500B-B](#) [770444-1](#) [776880-1](#) [827153-1](#) [881735-1](#)
[8N1515-32-24P](#) [9-1326729-8](#) [925467-1](#) [925474-1](#) [928905-1](#) [936398-2](#) [964562-1](#) [964562-4](#) [964731-2](#) [965051-1](#) [968782-1](#) [GT17SA-8DS-](#)
[HU](#) [GT17VS-10DP-5.2CF](#) [98315-0001](#)