

2N3713 2N3715  
2N3714 2N3716

**SILICON  
NPN TRANSISTORS**



**TO-3 CASE**



[www.centrasemi.com](http://www.centrasemi.com)

**DESCRIPTION:**

The CENTRAL SEMICONDUCTOR 2N3713, 2N3714, 2N3715, and 2N3716 are silicon NPN power transistors manufactured by the epitaxial-base process, mounted in a hermetically sealed metal package designed for medium speed switching and amplifier applications.

**MARKING: FULL PART NUMBER**

**MAXIMUM RATINGS:** ( $T_C=25^\circ\text{C}$ )

	<b>2N3713</b>	<b>2N3714</b>	<b>UNITS</b>	
<b>SYMBOL</b>	<b>2N3715</b>	<b>2N3716</b>		
Collector-Base Voltage	$V_{CBO}$	80	100	V
Collector-Emitter Voltage	$V_{CEO}$	60	80	V
Emitter-Base Voltage	$V_{EBO}$		7.0	V
Continuous Collector Current	$I_C$		10	A
Continuous Base Current	$I_B$		4.0	A
Power Dissipation	$P_D$		150	W
Operating and Storage Junction Temperature	$T_J, T_{stg}$		-65 to +200	$^\circ\text{C}$
Thermal Resistance	$\theta_{JC}$		1.17	$^\circ\text{C/W}$

**ELECTRICAL CHARACTERISTICS:** ( $T_C=25^\circ\text{C}$  unless otherwise noted)

<b>SYMBOL</b>	<b>TEST CONDITIONS</b>	<b>MIN</b>	<b>TYP</b>	<b>MAX</b>	<b>UNITS</b>
$I_{CEV}$	$V_{CE}=\text{Rated } V_{CBO}, V_{BE}=1.5\text{V}$			1.0	mA
$I_{CEV}$	$V_{CE}=\text{Rated } V_{CEO}, V_{BE}=1.5\text{V}, T_C=150^\circ\text{C}$			10	mA
$I_{EBO}$	$V_{EB}=7.0\text{V}$			5.0	mA
$BV_{CEO}$	$I_C=200\text{mA}$ (2N3713, 2N3715)	60			V
$BV_{CEO}$	$I_C=200\text{mA}$ (2N3714, 2N3716)	80			V
$V_{CE(SAT)}$	$I_C=5.0\text{A}, I_B=0.5\text{A}$ (2N3713, 2N3714)			1.0	V
$V_{CE(SAT)}$	$I_C=5.0\text{A}, I_B=0.5\text{A}$ (2N3715, 2N3716)			0.8	V
$V_{BE(SAT)}$	$I_C=5.0\text{A}, I_B=0.5\text{A}$ (2N3713, 2N3714)			2.0	V
$V_{BE(SAT)}$	$I_C=5.0\text{A}, I_B=0.5\text{A}$ (2N3715, 2N3716)			1.5	V
$V_{BE(ON)}$	$V_{CE}=2.0\text{V}, I_C=3.0\text{A}$			1.5	V
$h_{FE}$	$V_{CE}=2.0\text{V}, I_C=1.0\text{A}$ (2N3713, 2N3714)	40		120	
$h_{FE}$	$V_{CE}=2.0\text{V}, I_C=1.0\text{A}$ (2N3715, 2N3716)	50		150	
$h_{FE}$	$V_{CE}=2.0\text{V}, I_C=3.0\text{A}$ (2N3713, 2N3714)	15			
$h_{FE}$	$V_{CE}=2.0\text{V}, I_C=3.0\text{A}$ (2N3715, 2N3716)	30			
$f_T$	$V_{CE}=10\text{V}, I_C=0.5\text{A}, f=1.0\text{MHz}$	4.0			MHz
$t_r$	$I_C=5.0\text{A}, I_{B1}=I_{B2}=0.5\text{A}$		0.4		$\mu\text{s}$
$t_s$	$I_C=5.0\text{A}, I_{B1}=I_{B2}=0.5\text{A}$		0.3		$\mu\text{s}$
$t_f$	$I_C=5.0\text{A}, I_{B1}=I_{B2}=0.5\text{A}$		0.4		$\mu\text{s}$

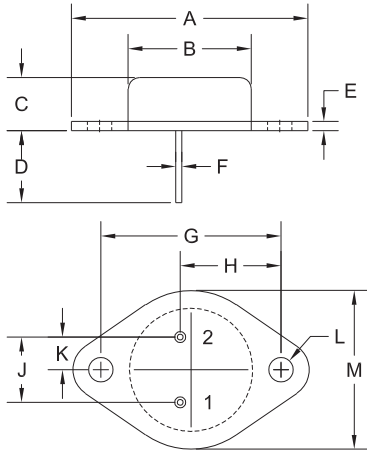
R2 (18-June 2013)

2N3713 2N3715  
 2N3714 2N3716

SILICON  
 NPN TRANSISTORS



TO-3 CASE - MECHANICAL OUTLINE



R2

SYMBOL	DIMENSIONS			
	INCHES		MILLIMETERS	
	MIN	MAX	MIN	MAX
A	1.516	1.573	38.50	39.96
B (DIA)	0.748	0.875	19.00	22.23
C	0.250	0.450	6.35	11.43
D	0.433	0.516	11.00	13.10
E	0.054	0.065	1.38	1.65
F	0.035	0.045	0.90	1.15
G	1.177	1.197	29.90	30.40
H	0.650	0.681	16.50	17.30
J	0.420	0.440	10.67	11.18
K	0.205	0.225	5.21	5.72
L (DIA)	0.151	0.172	3.84	4.36
M	0.984	1.050	25.00	26.67

TO-3 (REV: R2)

LEAD CODE:

- 1) Base
- 2) Emitter
- Case) Collector

MARKING:

FULL PART NUMBER

R2 (18-June 2013)



## OUTSTANDING SUPPORT AND SUPERIOR SERVICES

---

### PRODUCT SUPPORT

Central's operations team provides the highest level of support to insure product is delivered on-time.

- Supply management (Customer portals)
- Inventory bonding
- Consolidated shipping options
- Custom bar coding for shipments
- Custom product packing

---

### DESIGNER SUPPORT/SERVICES

Central's applications engineering team is ready to discuss your design challenges. Just ask.

- Free quick ship samples (2<sup>nd</sup> day air)
- Online technical data and parametric search
- SPICE models
- Custom electrical curves
- Environmental regulation compliance
- Customer specific screening
- Up-screening capabilities
- Special wafer diffusions
- PbSn plating options
- Package details
- Application notes
- Application and design sample kits
- Custom product and package development

---

### REQUESTING PRODUCT PLATING

1. If requesting Tin/Lead plated devices, add the suffix "TIN/LEAD" to the part number when ordering (example: 2N2222A TIN/LEAD).
2. If requesting Lead (Pb) Free plated devices, add the suffix "PBFREE" to the part number when ordering (example: 2N2222A PBFREE).

---

### CONTACT US

#### Corporate Headquarters & Customer Support Team

Central Semiconductor Corp.  
145 Adams Avenue  
Hauppauge, NY 11788 USA  
Main Tel: (631) 435-1110  
Main Fax: (631) 435-1824  
Support Team Fax: (631) 435-3388  
[www.centrasemi.com](http://www.centrasemi.com)

**Worldwide Field Representatives:**  
[www.centrasemi.com/wwreps](http://www.centrasemi.com/wwreps)

**Worldwide Distributors:**  
[www.centrasemi.com/wwdistributors](http://www.centrasemi.com/wwdistributors)

---

For the latest version of Central Semiconductor's **LIMITATIONS AND DAMAGES DISCLAIMER**, which is part of Central's Standard Terms and Conditions of sale, visit: [www.centrasemi.com/terms](http://www.centrasemi.com/terms)

## X-ON Electronics

Largest Supplier of Electrical and Electronic Components

*Click to view similar products for [Bipolar Transistors - BJT category](#):*

*Click to view products by [Central Semiconductor manufacturer](#):*

Other Similar products are found below :

[619691C](#) [MCH4017-TL-H](#) [MJ15024/WS](#) [MJ15025/WS](#) [BC546/116](#) [BC556/FSC](#) [BC557/116](#) [BSW67A](#) [HN7G01FU-A\(T5L,F,T](#)  
[NJVMJD148T4G](#) [NSVMMBT6520LT1G](#) [NTE187A](#) [NTE195A](#) [NTE2302](#) [NTE2330](#) [NTE2353](#) [NTE316](#) [IMX9T110](#) [NTE63](#) [NTE65](#)  
[C4460](#) [SBC846BLT3G](#) [2SA1419T-TD-H](#) [2SA1721-O\(TE85L,F\)](#) [2SA1727TLP](#) [2SA2126-E](#) [2SB1202T-TL-E](#) [2SB1204S-TL-E](#) [2SC5488A-](#)  
[TL-H](#) [2SD2150T100R](#) [SP000011176](#) [FMC5AT148](#) [2N2369ADCSM](#) [2SB1202S-TL-E](#) [2SC2412KT146S](#) [2SC4618TLN](#) [2SC5490A-TL-H](#)  
[2SD1816S-TL-E](#) [2SD1816T-TL-E](#) [CMXT2207 TR](#) [CPH6501-TL-E](#) [MCH4021-TL-E](#) [BC557B](#) [TTC012\(Q\)](#) [BULD128DT4](#) [JANTX2N3810](#)  
[Jantx2N5416](#) [US6T6TR](#) [KSF350](#) [068071B](#)