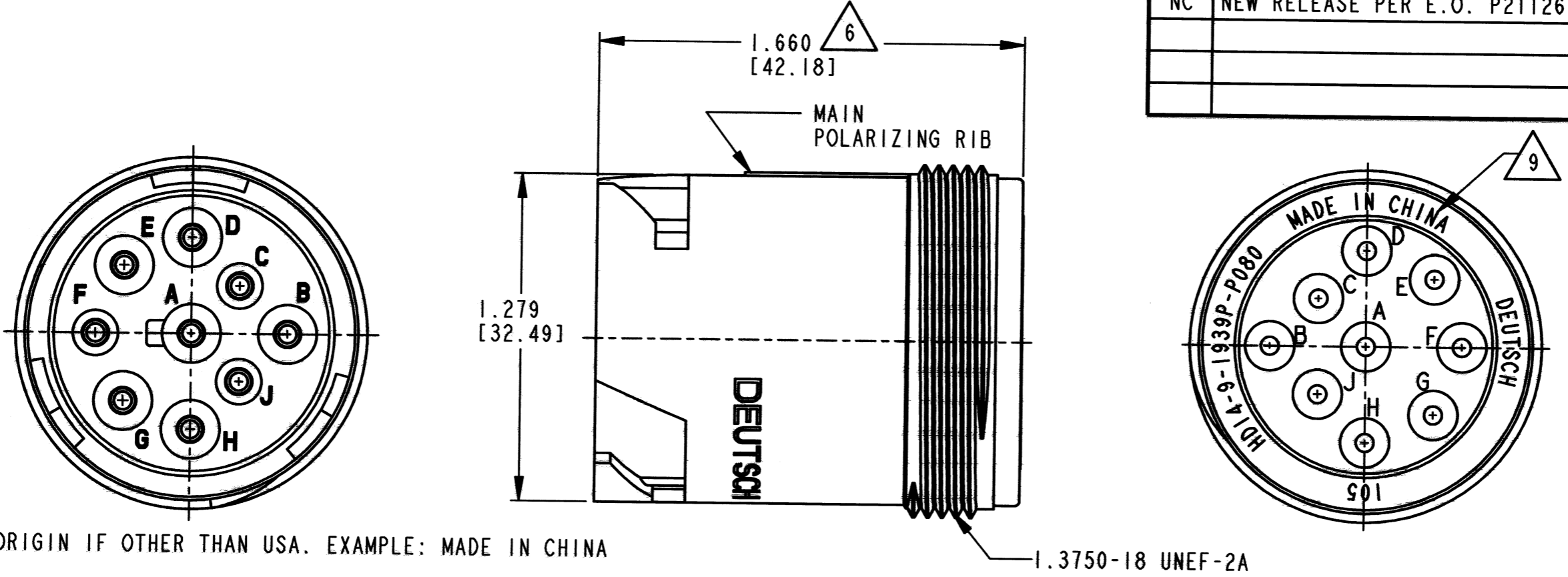


REV NC HD14-9-1939P*-P080

REVISIONS			
SYM	DESCRIPTION	DATE	APPROVED
NC	NEW RELEASE PER E.O. P21126	11-8-11	RDR

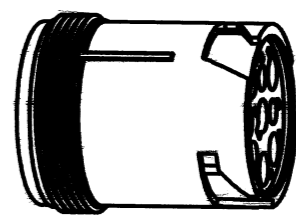


- 9. COUNTRY OF ORIGIN IF OTHER THAN USA. EXAMPLE: MADE IN CHINA
- 8. WHEN *= E: IDENTIFIES 'E' WIRE SEAL.
WHEN *= BLANK: IDENTIFIES 'NORMAL' WIRE SEAL.
- 7. MATERIAL: SHELL: PLASTIC, SEAL: RUBBER.
- 6. OVERALL DIMENSION DOES NOT INCLUDE RUBBER GROMMET.
- 5. THIS RECEPTACLE MATES WITH HD16-9-1939S*-P080 AND HD17-9-1939S*-P080 PLUGS (*=SEAL TYPE).
- 4. FOR "PERFORMANCE AND APPLICATION CHARACTERISTICS OF SOLID/STAMPED AND FORMED CONTACTS AND WIRES," SEE ENVELOPE DRAWING 0425-015-0000. THIS RECEPTACLE USES PIN CONTACTS ONLY.
- 3. ALL DIMENSIONS ARE IN INCHES [MILLIMETERS].
DIMENSION TOLERANCE ±.025 [.63] UNLESS OTHERWISE NOTED.
- 2. THIS CONNECTOR SERIES WILL ACCOMMODATE THE FOLLOWING WIRE INSULATION DIAMETERS:

SEAL TYPE	CONTACT SIZE	MIN. INSUL. O.D.	MAX. INSUL. O.D.	WIRE RANGE [mm ²]
NORMAL	16	.100 [2.54]	.150 [3.81]	14-20 AWG [2.0-.50]
E	16	.053 [1.35]	.120 [3.05]	14-20 AWG [2.0-.50]

1. CONSULT FACTORY FOR ELECTRICAL AND MATERIAL SPECIFICATIONS.

NOTES:



3D VIEW

SIGNATURE & DATE	
DR	I. GRANTCHAROVA 8/19/11
CHK	[Signature] 11/08/2011
PE	[Signature] 10/20/11
APPD	[Signature]
SCALE	NONE WT

RECEPTACLE CONNECTOR
IN-LINE
ARR. 9-1939
-P08 MOD
HD10 SERIES
ENVELOPE

EP	MATL. CODE
 3850 INDUSTRIAL AVE. HEMET, CA 92545 DEUTSCH INDUSTRIAL	
B HD14-9-1939P*-P080	
DWG SIZE	SHEET OF

X-ON Electronics

Largest Supplier of Electrical and Electronic Components

Click to view similar products for [Automotive Connectors](#) category:

Click to view products by [TE Connectivity](#) manufacturer:

Other Similar products are found below :

[003-018-000](#) [600858](#) [60403001](#) [60993906-B](#) [60993913-B](#) [629515004020001](#) [M902-2131](#) [M902-2161](#) [M902-2344](#) [72.330.1035.1](#)
[73.353.4028.0](#) [F118010](#) [F119300-B](#) [F132210](#) [F132210-B](#) [F166900](#) [F180100](#) [F258300](#) [F258300-B](#) [F294300-B](#) [F339100](#) [F339700](#) [F358300-](#)
[B](#) [F374110](#) [F407400](#) [F412210](#) [F427600](#) [F444110](#) [F487000](#) [F495100-B](#) [F500900-B](#) [F509500B-B](#) [770444-1](#) [776880-1](#) [827153-1](#) [881735-1](#)
[8N1515-32-24P](#) [9-1326727-8](#) [9-1326729-8](#) [925467-1](#) [925474-1](#) [928905-1](#) [936398-2](#) [964562-1](#) [964562-4](#) [964731-2](#) [965051-1](#) [968782-1](#)
[GT17SA-8DS-HU](#) [GT17VS-10DP-5.2CF](#)