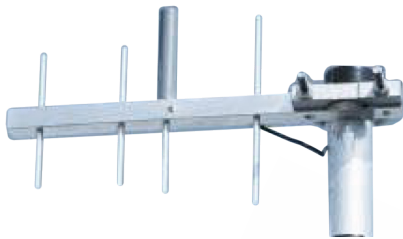


ESMR, SMR, CELLULAR, GSM, CONVENTIONAL YAGI ANTENNAS

For 800 MHz ESMR and SMR or conventional applications, choose 4 element PC804N, 6 element PC806N, or ten element PC8010N. The Laird Technologies PC804N, PC826N, and PC8210N are also available in the 900 MHz GSM frequency band.



FEATURES

- All-welded unit construction
- No adjustments ever needed
- Waterproof design
- Stainless steel hardware
- Pigtail mounted N-female connector

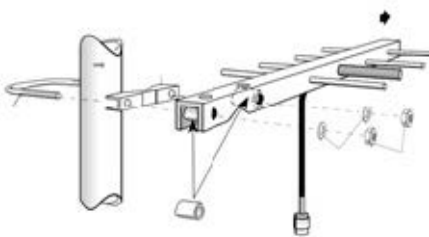
COMMON SPECIFICATIONS

- Power handling – 200 Watts
- Elements – 1/4 in (.63 cm) 6061T6 aluminum rod;
- Boom – 3/4 in (1.9 cm) 6061T6 aluminum channel
- Mounting style – U-bolt; maximum mast diameter – 2-1/8 in (5.4 cm) pigtail – 19 in (48.3 cm)

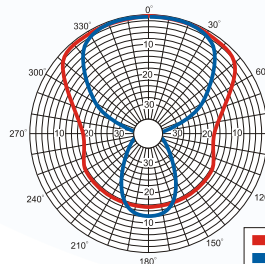
MARKETS

- WiMAX

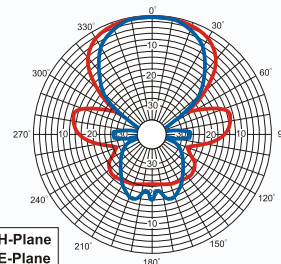
MODEL	FREQ. MHz	GAIN dBd	NO. ELEM	F TO B dB	-3 dB BEAMWIDTH		CONN. TYPE (FEMALE)	W/SURF. AREA ft ² (m ²)	W/SURV. mph (kph)	W/ 1/2 in ICE	LENGTH in (cm)	WT. LB. (KG)
					E-PLANE	H-PLANE						
PC9013N	902-928	13	13	20	35°	40°	N	0.46 (0.043)	125 (200)	100 (161)	53-1/2 (135.9)	3.12 (1.40)
PC9010N	928-960	12	10	20	40°	45°	N	0.38 (0.035)	125 (200)	100 (161)	41-7/16 (105.2)	2.31 (1.04)
PC926N	928-960	8.5	6	18	55°	65°	N	0.26 (0.024)	125 (200)	100 (161)	24-3/4 (62.9)	1.61 (.72)
PC904N	896-940	6	4	15	70°	100°	N	0.11 (0.01)	125 (200)	100 (161)	13 (33)	1.12 (.50)
PC906N	896-940	8.5	6	18	55°	65°	N	0.26 (0.024)	125 (200)	100 (161)	24-3/4 (62.9)	1.62 (.73)
PC8910N	896-940	11	10	20	40°	45°	N	0.38 (0.035)	125 (200)	100 (161)	41-7/16 (105.2)	2.31 (1.04)
PC886N	880-960	8.5	6	18	55°	65°	N	0.26 (0.024)	125 (200)	100 (161)	24-3/4 (62.9)	1.69 (.76)
PC884N	880-960	6	4	15	70°	90°	N	0.11 (0.01)	125 (200)	100 (161)	13 (33)	1.12 (.50)
PC8210N	824-896	11	10	20	40°	45°	N	0.38 (0.035)	125 (200)	100 (161)	46 (116.8)	2.37 (1.07)
PC8010N	806-869	11	10	20	40°	45°	N	0.38 (0.035)	125 (200)	100 (161)	46 (116.8)	2.44 (1.10)
PC804N	806-902	6	4	15	70°	90°	N	0.11 (0.01)	125 (200)	100 (161)	13 (33)	1.12 (.50)
PC806N	806-866	8.5	6	18	55°	65°	N	0.26 (0.024)	125 (200)	100 (161)	24-3/4 (62.9)	1.69 (.76)
PC826N	824-896	8.5	6	18	55°	65°	N	0.26 (0.024)	125 (200)	100 (161)	24-3/4 (62.9)	1.67 (.75)



Typical 4 Element



Typical 6 Element



Americas: +1.847.839.6907
IAS-AmericasEastSales@lairdtech.com

Europe: +44.1628.858941
IAS-EUSales@lairdtech.com

Asia: +86.21.5855.0827.127
IAS-AsiaSales@lairdtech.com

www.lairdtech.com

ANT-DS-800-900-YAGI 111314

Any information furnished by Laird Inc. and its agents is believed to be accurate and reliable. Responsibility for the use and application of Laird materials rests with the end user, since Laird and its agents cannot be aware of all potential uses. Laird makes no warranties as to the fitness, merchantability or suitability of any Laird materials or products for any specific or general uses. Laird shall not be liable for incidental or consequential damages of any kind. All Laird products are sold pursuant to the Laird Terms and Conditions of sale in effect from time to time, a copy of which will be furnished upon request. © Copyright 2014 Laird Inc. All Rights Reserved. Laird, Laird Technologies, the Laird Logo, and other marks are trade marks or registered trade marks of Laird Inc. or an affiliate company thereof. Other product or service names may be the property of third parties. Nothing herein provides a license under any Laird or any third party intellectual property rights.

X-ON Electronics

Largest Supplier of Electrical and Electronic Components

Click to view similar products for [Antennas](#) category:

Click to view products by [Laird Connectivity](#) manufacturer:

Other Similar products are found below :

[CCT FM1](#) [ABFT](#) [AD-NM-SMAF 001-0021](#) [CTC110](#) [MAF94149](#) [EXE902SF](#) [MMCX-SMA-100](#) [PDQ24496-91NF](#) [GAN30084EU](#) [930-033-R](#) [A08-HABUF-P5I](#) [AAF95035](#) [DG-ANT-20DP-BG-B](#) [APAMPGJ-141](#) [1513563-1](#) [OF86315-FNF](#) [OP24516DS-91NM](#) [A09-HASM-7](#) [EXE902MD](#) [EXE902SM](#) [SPDA17806/2170LAR](#) [APAMPG-117](#) [GPS1575SP26-004](#) [GPS15MGSMA](#) [CMD69273P-30NF](#) [CMQ69273-30NF](#) [RD2458-5-OTDR-NM](#) [RD2458-5-RSMA](#) [TRAB24/49003](#) [W4120ER5000](#) [W6102B0100](#) [YE572113-30RSMM](#) [108-00014-50](#) [SPDA17RP918](#) [OP24516SX-91NM](#) [OP24516SX-91RSMM](#) [CMQ69273P-30NF](#) [CMS69273-30NF](#) [CMS69273P-30NF](#) [TRAB24003N](#) [TRAB24003NP](#) [TRAB8213NP](#) [TRAB8903](#) [A09-Y8NF](#) [A09-Y11NF](#) [A09-HSM-7](#) [A09-F8NF-M](#) [A09-F5NF-M](#)