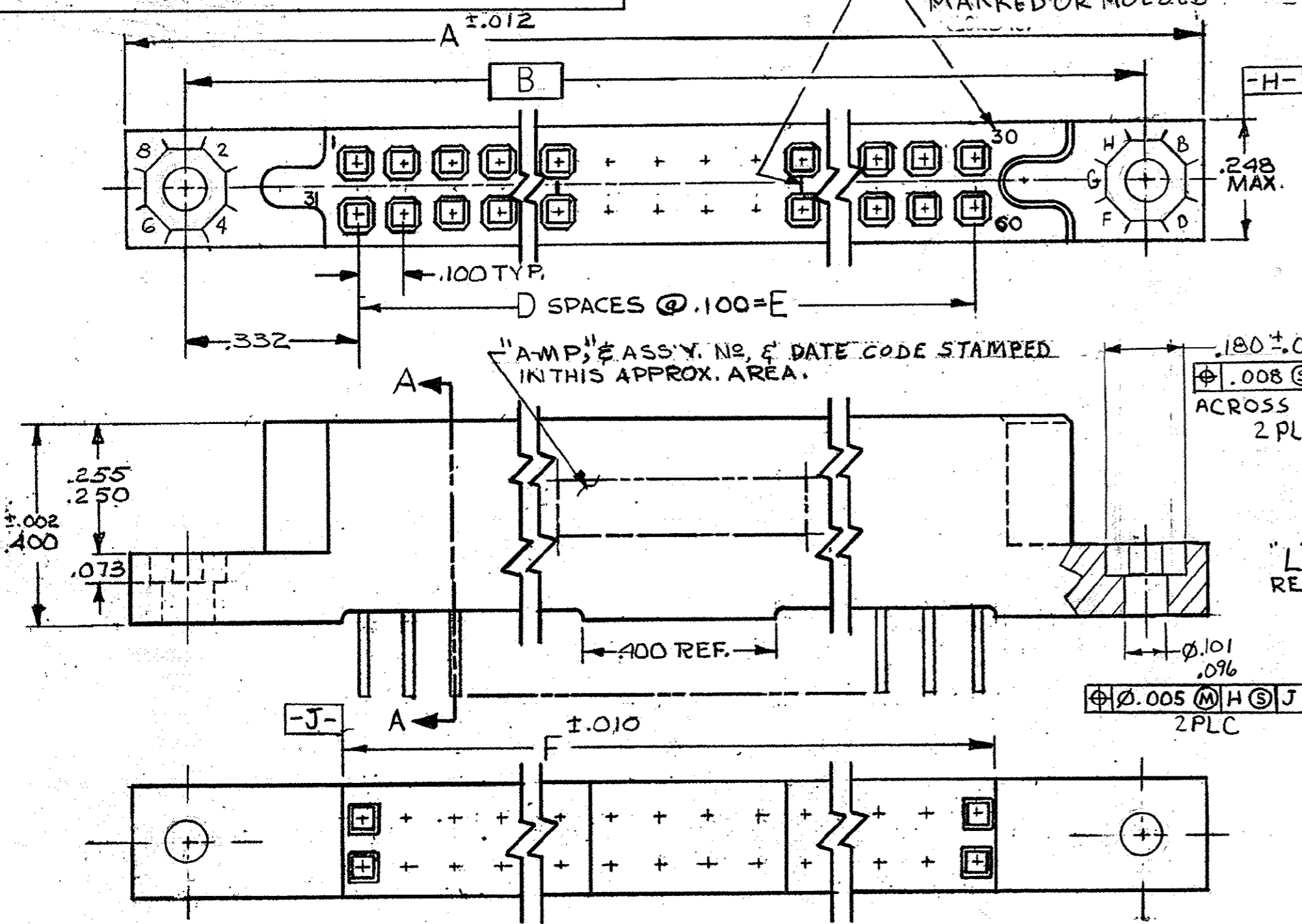


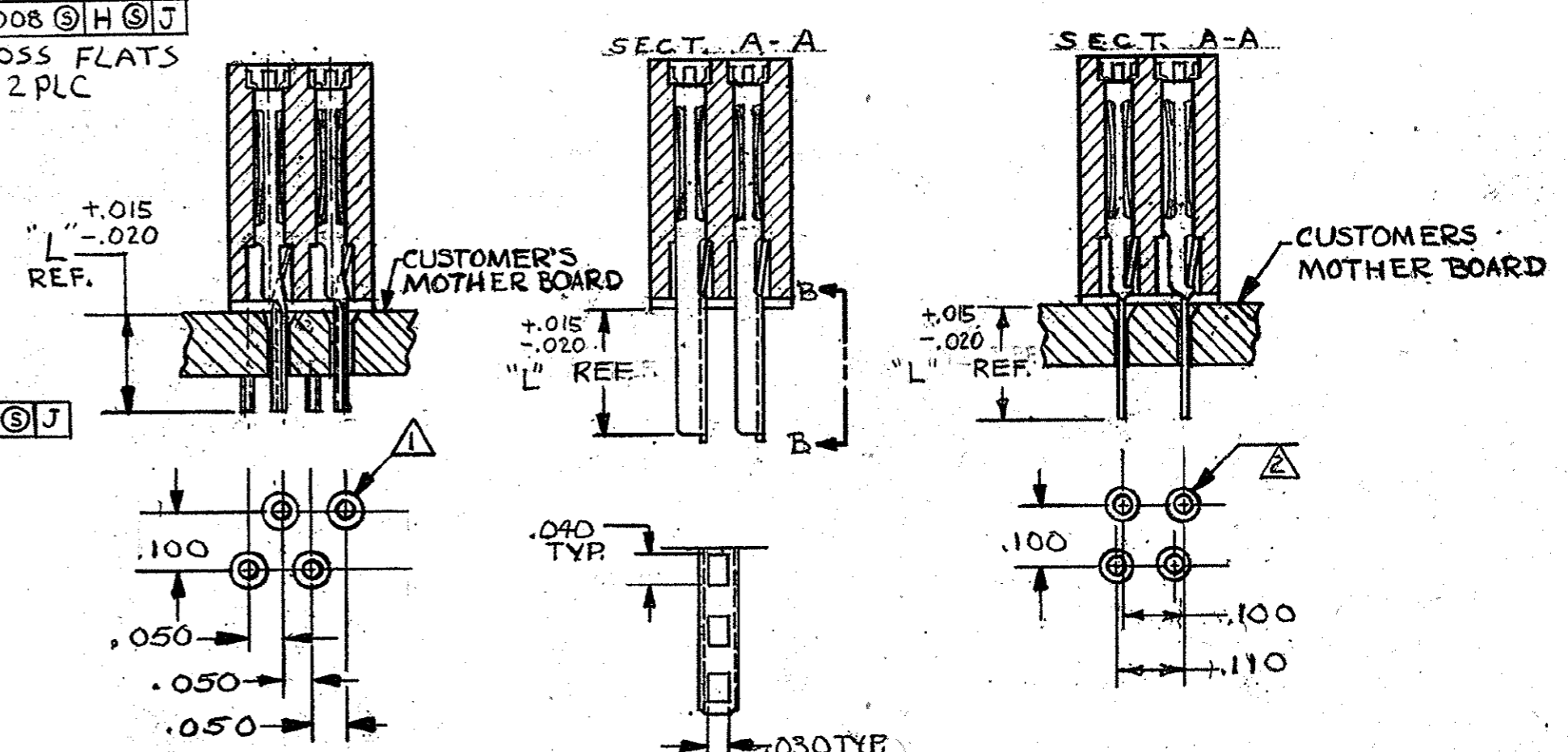
© COPYRIGHT 19 BY AMP INCORPORATED, HARRISBURG, PA. ALL INTERNATIONAL RIGHTS RESERVED. AMP INCORPORATED PRODUCTS COVERED BY U. S. AND FOREIGN PATENTS AND/OR PATENTS PENDING.

NO. (SEE CHART) AND LINES INDICATING EVERY 5 CAVITIES MARKED OR MOLDED

REVISIONS						
P	F	ZONE	LTR	DESCRIPTION	DATE	APPROVED
B1				B1 REDRAWN W/O CHANGE 7271	3-81	
				B2 REV PER ECN AB-0715	2-85	grr
				B3 REV PER ECN AB-0535	db 3-13-85	EAM
				C REV PER DF-0089 DF-0117	11-88	JM
				D REV PER DF-1545	N.F. 4-26-89	J.S.
				E REV PER 0600-4173-95 7A	1/97	DAM
				F REV PER 0600-5631-96 π	8-98	DAM
				G REV PER 0600-5859-96 π	9-98	AL
				H REV PER 0600-6467-97 π	10-98	Bg
				J REV PER ECO-05-013228	11-05	PY



SECT. A-A



PART NO.	TYPE	NO. POS.	A	B	D	E	F	CAVITY IDENT. STAMPED	"L"	OBS
583584-1	I							25	.156	OBS
-2	II	50	3.355	3.065	24	2.400	2.475	26	.220	OBS
-3	III							50	.185	OBS
-4	I							30	.156	
-5	II	60	3.855	3.565	29	2.900	2.975	31	.220	OBS
-6	III							60	.185	OBS
-7	I							40	.156	OBS
-8	II	80	4.855	4.565	39	3.900	3.975	41	.220	OBS
-9	III							80	.185	
-10	I							45	.156	OBS
-11	II	90	5.355	5.065	44	4.400	4.475	46	.220	OBS
-12	III							90	.185	OBS
-13	I							50	.156	
-14	II	100	5.855	5.565	49	4.900	4.975	51	.220	OBS
-15	III							100	.185	OBS
-16	I							55	.156	OBS
-17	II	110	6.355	6.065	54	5.400	5.475	56	.220	OBS
-18	III							110	.185	OBS
-19	I	30	2.355	2.065	14	1.400	1.475	16	.156	
-20	II	40	2.855	2.565	19	1.900	1.975	21	.156	OBS
-21	III	70	4.355	4.065	34	3.400	3.475	36	.156	
-22	I	60	3.855	3.565	29	2.900	2.975	31	.325	
-23	II	90	5.355	5.065	44	4.400	4.475	46	.325	OBS
-24	III	30	2.355	2.065	14	1.400	1.475	16	.220	
2583584-5	III	110	6.355	6.065	54	5.400	5.475	56	.325	

FLOW SOLDER CONTACT FOR P.C. BOARD  
SOLDER OR WELD TYPE CONTACT  
SOLDER OR WRAIR TYPE CONTACT  
TYPE I  
TYPE II  
TYPE III

△ .022 MIN. DIA. HOLES IN MOTHER BOARD, 30° X .031 DEEP CHAMFER RECOMMENDED ON CONNECTOR SIDE OF BOARD.  
△ .025 MIN. DIA. HOLES IN MOTHER BOARD 30° X .031 DEEP CHAMFER RECOMMENDED ON CONNECTOR SIDE OF BOARD.  
△ FINISH: .000030 GOLD IN CONTACT AREA, .000100 TIN-LEAD ON TAILS, OVER .000030 NICKEL ENTIRE CONTACT  
△ OBSOLETE PART NUMBER.

UNLESS OTHERWISE SPECIFIED DIMENSIONS ARE IN INCHES. TOLERANCES ON: DECIMALS ±.005 ANGLES ±.005	CONTRACT NO	<b>AMP</b> AMP INCORPORATED Harrisburg, Pa.
	DR <i>A.M. SHARPE</i> 3-12-81	
	CHK <i>Dr. Bushey</i> 3-13-81	
	APPD <i>R.W. Dunbar</i> 3/13/81	
MATERIAL HOUSING: DIALYL PHTHALATE CONTACT: BeCu OR COPPER-NICKEL-SILICONE FINISH: △ 3	APPD <i>Elwood T. Parsons</i> 3-13-81	NAME: RECPT. ASSY, 1000 SERIES BOX, WITH MOUNTING HOLES, FLOW SOLDER, SOLDER EYELETS, AND 10X20 POSTED CONTACTS
OTHER APPD	DSGN APPD	SIZE CODE IDENT NO DRAWING NO <b>C 00779 583584</b>
		SCALE 4:1 SHEET 1 OF 2

583584

© COPYRIGHT 19 BY AMP INCORPORATED, HARRISBURG, PA.  
ALL INTERNATIONAL RIGHTS RESERVED. AMP INCORPORATED PRODUCTS  
COVERED BY U. S. AND FOREIGN PATENTS AND/OR PATENTS PENDING.

REVISIONS				DATE	APPROVED
P	F	ZONE	LTR	DESCRIPTION	
				(SEE SHEET 1)	

PART NO.	TYPE	NO POS.	A	B	D	E	F	L	CAVITY IDENT. STAMPED	
2-583584-6	III	30	2.355	2.065	14	1.400	1.475	.325	16 15 30	△
2- ↑ -7	III	100	5.855	5.565	49	4.900	4.975	.325	51 50 100	OBS
2- △ -8	III	110	6.355	6.065	54	5.400	5.475	.360	56 55 110	OBS
2- -9	II	70	4.355	4.065	34	3.400	3.475	.220	36 35 70	OBS
3- △ -0	II	40	2.855	2.565	19	1.900	1.975	.220	21 20 40	OBS
3- -1	III	40	2.855	2.565	19	1.900	1.975	.325	21 20 40	OBS
3- △ -2	III	50	3.355	3.065	24	2.400	2.475	.325	26 25 50	OBS
3- △ -3	III	70	4.355	4.065	34	3.400	3.475	.325	36 35 70	OBS
3- -4	III	80	4.855	4.565	39	3.900	3.975	.325	41 40 80	OBS
3- △ -5	I	110	6.355	6.065	54	5.400	5.475	.235	56 55 110	OBS
3- -6	I	60	3.855	3.565	29	2.900	2.975	.235	31 30 60	
3- -7	I	80	4.855	4.565	39	3.900	3.975	.235	41 40 80	
3- ↓ -8	I	30	2.355	2.065	14	1.400	1.475	.235	16 15 30	OBS
3-583584-9	I	70	4.355	4.065	34	3.400	3.475	.235	36 35 70	

UNLESS OTHERWISE SPECIFIED DIMENSIONS ARE IN INCHES. TOLERANCES ON: DECIMALS ± .005 ANGLES ±		CONTRACT NO	AMP INCORPORATED Harrisburg, Pa.	
MATERIAL	FINISH	DR A.M. SHARPE 3-12-81	NAME RECPT. ASS'Y, 1000 SERIES BOX, WITH MOUNTING HOLES, FLOW SOLDER, SOLDER EYELETS, AND 10x20 POSTED CONTACTS	PART NO
		CHK Dr. Bushey 3-13-81	SIZE C	CODE IDENT NO 00779
		APPD Edward T. Parsons 3-13-81	DRAWING NO 583584	DRAWING NO
		DSGN APPD	SCALE 4:1	SHEET 2 of 2
		OTHER APPD		

## X-ON Electronics

Largest Supplier of Electrical and Electronic Components

*Click to view similar products for [Board to Board & Mezzanine Connectors](#) category:*

*Click to view products by [TE Connectivity](#) manufacturer:*

Other Similar products are found below :

[10135583-642402LF](#) [89885-310LF](#) [589158040000018](#) [6-1393048-0](#) [68683-613](#) [MDF7-12DP-2.54DSA](#) [MDF7-18P-2.54DSA\(01\)](#) [MDF7-20DP-2.54DSA](#) [MDF7-26D-2.54DSA\(55\)](#) [MDF7-3P-2.54DSA\(01\)](#) [MDF7B-3P-2.54DSA\(55\)](#) [MDF7C-11P-2.54DSA\(55\)](#) [MDF7C-18P-2.54DSA\(55\)](#) [MDF7C-5P-2.54DSA\(01\)](#) [MDF7P-5P-2.54DSA\(55\)](#) [75234-0516](#) [FCN-230C068-11](#) [FCN-268F012-G/BD](#) [FCN-268F036-G/BD](#) [FCN-268M012-G/0D](#) [FCN-268M024-G/1D](#) [FCN-360C008-C](#) [FCN-360C040-C](#) [FCN-723J004/1](#) [MIS-048-01-F-D-DP-K](#) [832-10-034-10-001000](#) [93696-325LF](#) [11828-1FA](#) [AXK630345P](#) [18097-0013](#) [ICA-328STT](#) [2007042-2](#) [304400-2](#) [FCN-214Q030-G/0](#) [FCN-215Q040-G/0](#) [FCN-230C068-ESA](#) [FCN-234P048-G/0](#) [FCN-235D050-G/C](#) [FCN-360A3](#) [FCN-360C040-B](#) [210-93-314-41-105000](#) [2-22603-0](#) [379-064-521-202](#) [MDF7-12P-2.54DSA\(01\)](#) [MDF7-16P-2.54DS\(56\)](#) [MDF7-40DP-2.54DSA\(55\)](#) [MDF7-8P-2.54DSA\(55\)](#) [MDF7B-16P-2.54DSA\(55\)](#) [AXG720047](#) [5031084030](#)