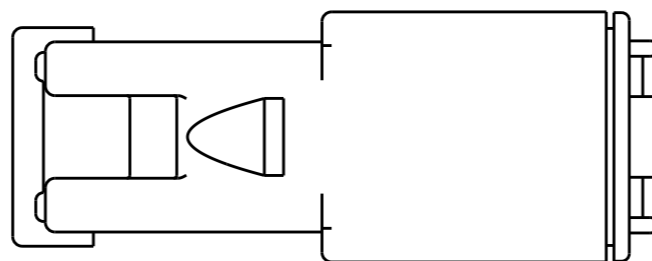
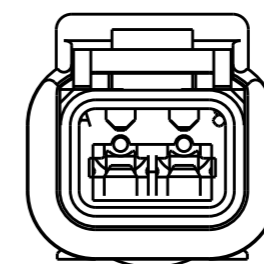
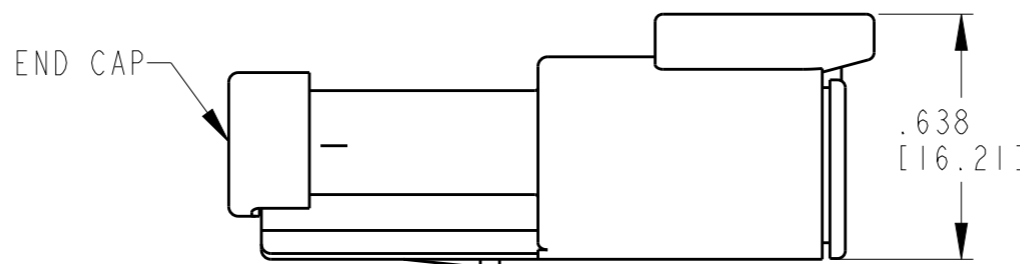
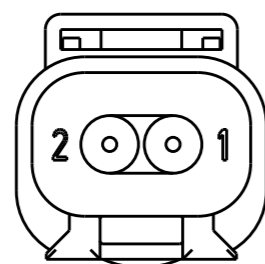
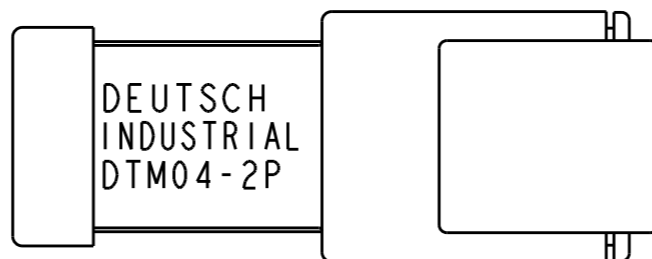
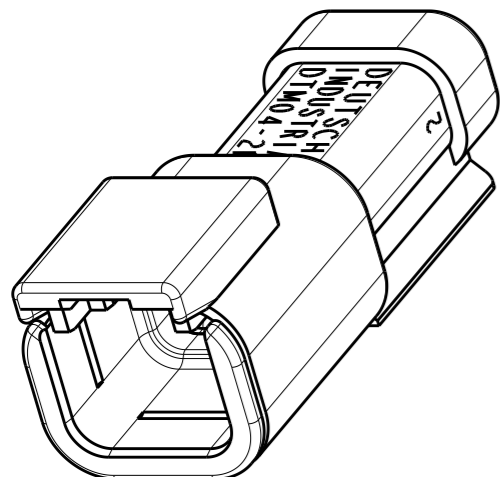


P	LTR	DESCRIPTION	DATE	DWN	APVD
-	-	NEW RELEASE PER E.O. P17051	1-8-01	DM	RDR
A	-	REVISED PER ECO-13-009353	5-9-13	JA	RM



RECEPTACLE HOUSING

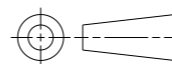
CONTACT SIZE	MIN. INSUL. O.D.	MAX. INSUL. O.D.	WIRE RANGE [mm ²] REF ONLY
20	.053 [1.35]	.120 [3.05]	16-20 AWG [1.0-0.5]

- 5 MATERIAL - HOUSING/END CAP: PLASTIC; GROMMET: RUBBER.
- 4. THIS RECEPTACLE MATES WITH DTM06-2S-**** PLUG. (**** = ALL MODIFICATIONS)
- 3 FOR CONTACT AND WIRE PERFORMANCE AND APPLICATION CHARACTERISTICS SEE ENVELOPE DRAWING 0425-015-0000.
- 2. SECONDARY WEDGE LOCK SOLD SEPARATELY: WM-2P, WM-2P* (* = A,B,C,D KEYS)
- 1. DIMENSION TOLERANCE: ±.025 [.64].

NOTES: UNLESS OTHERWISE SPECIFIED

THIS DRAWING IS A CONTROLLED DOCUMENT.

DIMENSIONS: INCHES [mm]



TOLERANCES UNLESS OTHERWISE SPECIFIED:

0 PLC	±
1 PLC	±
2 PLC	±
3 PLC	±.025
4 PLC	±
ANGLES	±0°30'0"

MATERIAL



FINISH

DWN 09MAY2013

CHK JAIME C. APOSTOL

ROBERT MILLIGAN

APVD 09MAY2013

ROBERT MILLIGAN

PRODUCT SPEC

APPLICATION SPEC

WEIGHT

5.925g

Customer Drawing



TE Connectivity

RECEPTACLE WITH END CAP
2 CONTACTS, SIZE 20, COLOR: BLACK
-E005 MOD, DTM SERIES

SIZE CAGE CODE DRAWING NO RESTRICTED TO

A3 4AFU8 ©-DTM04-2P-E005 -

SCALE SHEET OF REV

NONE 1 OF 1 A

X-ON Electronics

Largest Supplier of Electrical and Electronic Components

Click to view similar products for [Automotive Connectors](#) category:

Click to view products by [TE Connectivity](#) manufacturer:

Other Similar products are found below :

[003-018-000](#) [600858](#) [60403001](#) [60993906-B](#) [60993913-B](#) [629515004020001](#) [M902-2131](#) [M902-2161](#) [M902-2344](#) [72.330.1035.1](#)
[73.353.4028.0](#) [F118010](#) [F119300-B](#) [F132210](#) [F132210-B](#) [F166900](#) [F180100](#) [F258300](#) [F258300-B](#) [F294300-B](#) [F339100](#) [F339700](#) [F358300-](#)
[B](#) [F374110](#) [F407400](#) [F412210](#) [F427600](#) [F444110](#) [F487000](#) [F495100-B](#) [F500900-B](#) [F509500B-B](#) [770444-1](#) [776880-1](#) [827153-1](#) [881735-1](#)
[8N1515-32-24P](#) [9-1326729-8](#) [925467-1](#) [925474-1](#) [928905-1](#) [936398-2](#) [964562-1](#) [964562-4](#) [964731-2](#) [965051-1](#) [968782-1](#) [GT17SA-8DS-](#)
[HU](#) [GT17VS-10DP-5.2CF](#) [98315-0001](#)