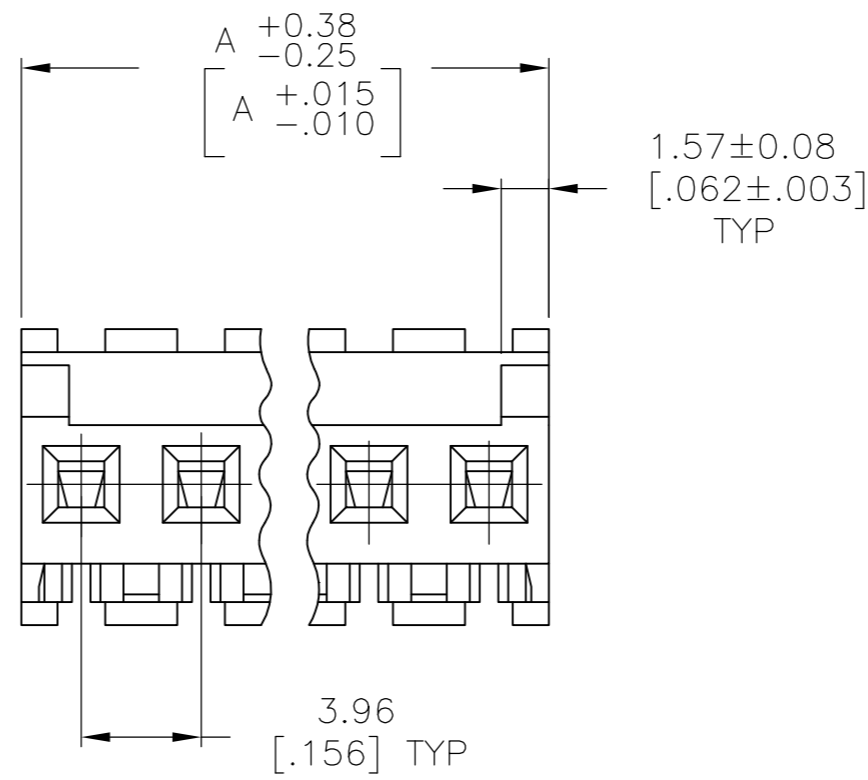
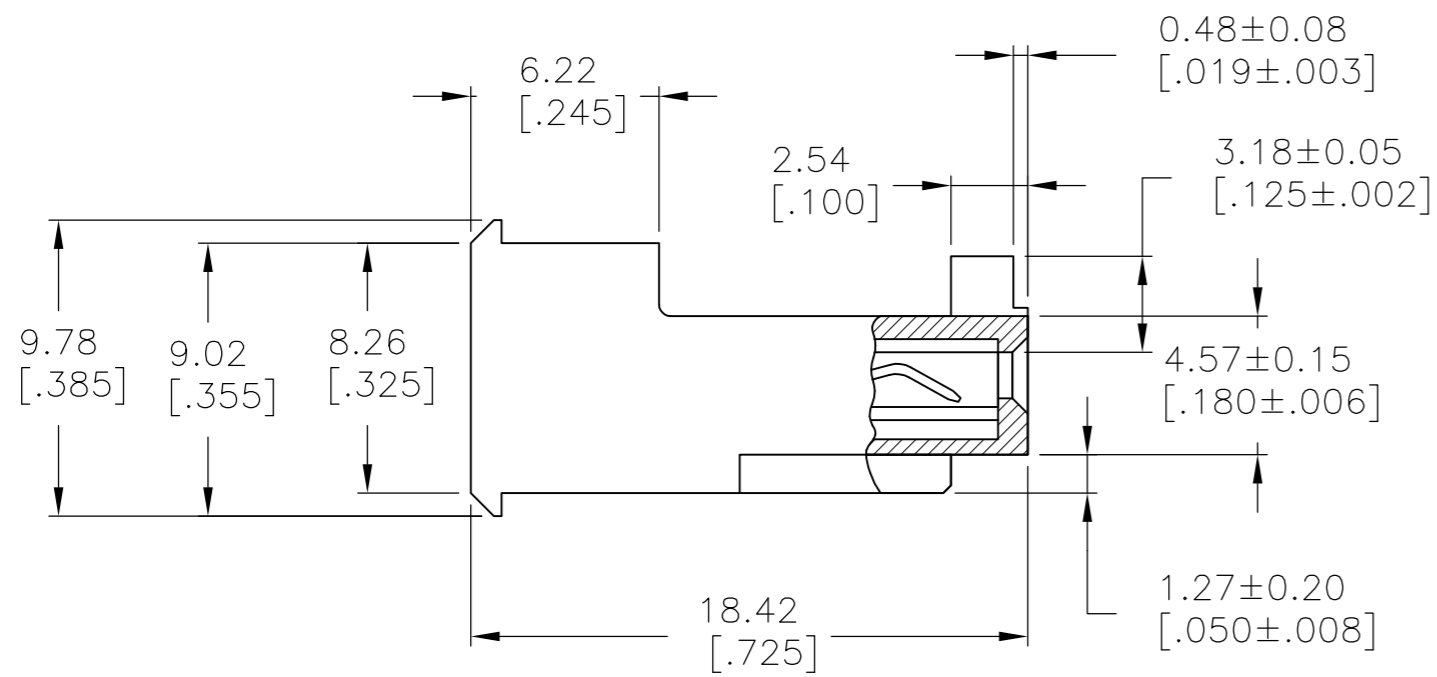
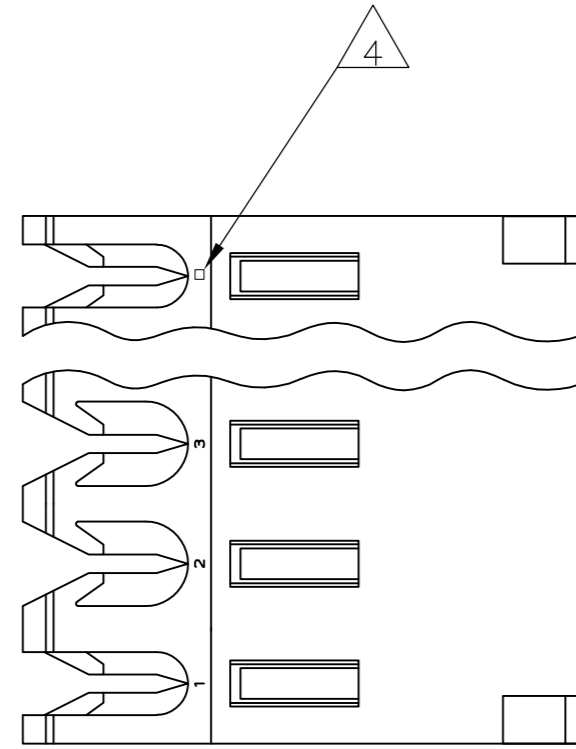


THIS DRAWING IS UNPUBLISHED. RELEASED FOR PUBLICATION
 © COPYRIGHT - By - ALL RIGHTS RESERVED.

LOC	DIST	REVISIONS					
CM	54	P	LTR	DESCRIPTION	DATE	DWN	APVD
		B2		REVISED PER ECO-11-014117	18JUL11	HMR	SM



1 MATERIAL: CONNECTOR - NYLON UL94V-0 (BLACK).
 CONTACTS - 0.30[.012] THICK COPPER ALLOY
 BRIGHT TIN-LEAD 0.00203[.000080] MIN THICK FOR CONTACTS
 644570-2 THRU 1-644570-4
 MATTE WHISKER MITIGATED TIN 0.00203[.000080] MIN THICK FOR
 3-644570-2 THRU 4-644570-4

2. CONTACTS ACCEPT 18 AWG WIRE WITH 2.41[.095] MAX INSULATION DIAMETER.

3. CONTACTS MUST ACCEPT 1.14±0.03 [.045±.001] SQUARE POST AND REMAIN LOCKED IN POSITION.

4 IDENTIFICATION NUMBER FOR LAST CIRCUIT MAY NOT APPEAR ON ALL ASSEMBLIES.

5. DIMENSIONS IN BRACKETS ARE IN INCHES.

6. HOUSING FEATURES ARE: FEED-THRU WITHOUT LOCKING RAMP AND WITH POLARIZING TAB.

7 OBSOLETE PARTS: OBSOLETE CIS STREAMLINING PER D.RENAUD/D.SINISI

47.55 [1.872]	12	4-644570-2
43.59 [1.716]	11	4-644570-1
39.62 [1.560]	10	4-644570-0
35.66 [1.404]	9	3-644570-9
31.70 [1.248]	8	3-644570-8
27.74 [1.092]	7	3-644570-7
23.77 [.936]	6	3-644570-6
19.81 [.780]	5	3-644570-5
15.85 [.624]	4	3-644570-4
11.89 [.468]	3	3-644570-3
7.92 [.312]	2	3-644570-2
47.55 [1.872]	12	1-644570-2
43.59 [1.716]	11	1-644570-1
39.62 [1.560]	10	1-644570-0
35.66 [1.404]	9	644570-9
31.70 [1.248]	8	644570-8
27.74 [1.092]	7	644570-7
23.77 [.936]	6	644570-6
19.81 [.780]	5	644570-5
15.85 [.624]	4	644570-4
11.89 [.468]	3	644570-3
7.92 [.312]	2	644570-2
	DIM A	NO OF CIRCUITS
		PART NO

7 SUPERSEDED
 7 OBSOLETE
 7 SUPERSEDED
 7 SUPERSEDED

METRIC

THIS DRAWING IS A CONTROLLED DOCUMENT.		DWN	-	TE Connectivity	
DIMENSIONS: mm [INCHES]		CHK	-	MTA-156 CONNECTOR ASSEMBLY, 18 AWG, UL94V-0, SPECIAL	
TOLERANCES UNLESS OTHERWISE SPECIFIED:		APVD	-	NAME	
0 PLC	± -	PRODUCT SPEC	108-1051	SIZE	A2
1 PLC	± -	APPLICATION SPEC	114-1020	CAGE CODE	00779
2 PLC	± -	WEIGHT	-	DRAWING NO	C=644570
3 PLC	± 0.13 [.005]	CUSTOMER DRAWING		SCALE	4:1
4 PLC	± -			SHEET	1 OF 1
ANGLES	± -			REV	B2
FINISH	1				

X-ON Electronics

Largest Supplier of Electrical and Electronic Components

Click to view similar products for [Headers & Wire Housings](#) category:

Click to view products by [TE Connectivity](#) manufacturer:

Other Similar products are found below :

[95000-104TRLF](#) [10135584-644402LF](#) [DF62W-EP2022PCA](#) [95000-106TRLF](#) [DF62W-2022SCA](#) [DF62W-EP2022PC](#) [2203348](#) [DF62W-2022SC](#) [1084018](#) [1029039](#) [1084017](#) [802-10-012-10-002000](#) [1112640](#) [1112639](#) [000-34000](#) [0009482033](#) [0009507031](#) [57102-S06-03LF](#) [57202-S52-04LF](#) [PCN6-15S-2.5E](#) [0039019024](#) [58102-G61-06LF](#) [582553-1](#) [0009485154](#) [0009508121](#) [0022285053](#) [0050291907](#) [018731A](#) [LY20-4P-DT1-P1E-BR](#) [02.125.8002.8](#) [60101931](#) [60598-1 \(Cut Strip\)](#) [M1625-3R/100](#) [61062-3](#) [61082-181009](#) [636-1427](#) [638009-1](#) [641938-9](#) [641991-4](#) [644168-1](#) [647662-1](#) [65039-019ELF](#) [65817-002LF](#) [65817-015LF](#) [65863-015LF](#) [66207-023LF](#) [67016-026LF](#) [67046-001LF](#) [67095-007LF](#) [67230-005LF](#)