

REVISIONS			
LTR	DESCRIPTION	DATE	APPROVED
A	Added ebanol and nickel plate finishes. Editorial changes throughout.	12 JUN 1989	Randy Larson
B	Updated referenced documents and contact information. Technical and editorial changes throughout.	14 SEP 2001	Thomas Hess

PREVIOUS CAGE CODE 14933 SUPERSEDED BY 037Z3.

THE ORIGINAL FIRST PAGE OF THIS DRAWING HAS BEEN REPLACED.

Prepared in accordance with MIL-STD-100

Selected item drawing

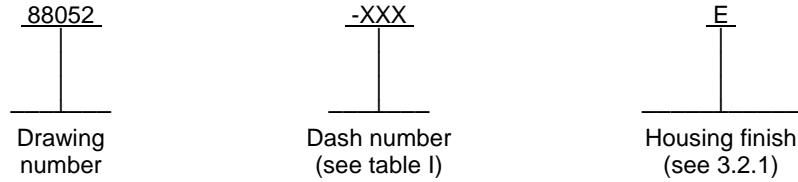
REV																				
PAGE																				
REV																				
PAGE																				
REV STATUS OF PAGES	REV	B	B	B	B	B	B	B	B	B	B	B	B	B	B	B				
	PAGES	1	2	3	4	5	6	7	8	9	10	11	12	13	14					

PMIC N/A	PREPARED BY James B. Walker Jr.	DEFENSE SUPPLY CENTER, COLUMBUS COLUMBUS, OH	
Original date of drawing 23 October 1988	CHECKED BY Ken Beymer	TITLE HOLDER, ELECTRICAL CARD, CARD GUIDE-RETAINER, SCREW ACTUATED, METAL	
	APPROVED BY D. E. Morgan		
	SIZE A	CODE IDENT. NO. 14933	DWG NO. 88052
	REV B		PAGE 1 OF 14

1. SCOPE

1.1 Scope. This drawing describes the requirements for a family of lever actuated card guides intended for use with printed circuit boards and circuit card assemblies in moderate shock and vibration environments.

1.2 Part or Identifying Number (PIN). The complete PIN shall be as follows:



2. APPLICABLE DOCUMENTS

2.1 Government documents.

2.1.1 Specifications, standards, and handbooks. The following specifications, standards, and handbooks form a part of this document to the extent specified herein. Unless otherwise specified, the issues of these documents are those listed in the issue of the Department of Defense Index of Specifications and Standards (DoDISS) and supplement thereto, cited in the solicitation (see 6.2).

SPECIFICATIONS

FEDERAL

- QQ-N-290 - Nickel Plating ((Electrodeposited).
- QQ-P-416 - Plating, Cadmium (Electrodeposited).

DEPARTMENT OF DEFENSE

- MIL-F-495 - Finish, Chemical, Black, for Copper Alloys.
- MIL-S-5002 - Surface Treatments and Inorganic Coatings for Metal Surfaces of Weapon Systems.
- MIL-DTL-13924 - Coating, Oxide, Black, For Ferrous Metals.

STANDARDS

DEPARTMENT OF DEFENSE

- MIL-STD-1285 - Marking of Electrical and Electronic Parts.

(Unless otherwise indicated, copies of federal and military specifications, standards, and handbooks are available from the Document Automation and Production Service (DAPS), Building 4D (DPM-DODSSP), 700 Robbins Avenue, Philadelphia, PA 19111-5094.)

2.2 Non-Government publications. The following document(s) form a part of this document to the extent specified herein. Unless otherwise specified, the issues of the documents which are DoD adopted are those listed in the issue of the DoDISS cited in the solicitation. Unless otherwise specified, the issues of documents not listed in the DoDISS are the issues of the documents cited in the solicitation (see 6.2).

AMERICAN SOCIETY FOR TESTING AND MATERIALS (ASTM)

- ASTM A366 - Standard Specification for Commercial Steel (CS) Sheet, Carbon, (0.15 Maximum Percent), Cold-Rolled.
- ASTM A582 - Standard Specification for Free-Machining Stainless Steel Bars.
- ASTM B194 - Standard Specification for Copper-Beryllium Alloy Plate, Sheet, Strip, and Rolled Bar.

(Application for copies should be addressed to the American Society for Testing and Materials, 100 Barr Harbor Drive, West Conshohocken, PA 19428-2959.)

DEFENSE SUPPLY CENTER, COLUMBUS COLUMBUS, OHIO	SIZE A	CODE IDENT NO. 14933	DWG NO. 88052
		REV B	PAGE 2

(Non-Government Standards and other publications are normally available from the organizations which prepare or which distribute the documents. These documents also may be available in or through libraries or other informational services.)

2.3 Order of precedence. In the event of a conflict between the text of this document and the references cited herein, the text of this document takes precedence. Nothing in this document, however, supersedes applicable laws and regulations unless a specific exemption has been obtained.

3. REQUIREMENTS

3.1 Interface and physical dimensions. See table I and figure 1.

3.2 Materials.

3.2.1 Housing. The body material shall be cold rolled steel in accordance with ASTM A366 or beryllium copper in accordance with ASTM B194.

3.2.2 Cam. The cam material shall be beryllium copper housing material in accordance with ASTM A366.

3.2.3 Screw. The screw material shall be stainless steel in accordance with ASTM A582.

3.3 Finish.

3.3.1 Housing. The finish shall be cadmium plate in accordance with QQ-P-416, type II, class 2 or ebanol in accordance with MIL-F-495 (for beryllium copper) or MIL-DTL-13924 (for steel) or nickel plate in accordance with QQ-N-290, class 1, grade G (bright). Parts with a cadmium plated finish shall include a suffix "C", parts with an ebanol finish shall include a suffix "E", and parts with a nickel plated finish shall include a suffix "N" (see 1.2).

3.3.2 Screw. The screw shall be passivate in accordance with MIL-S-5002.

3.4 Certificate of compliance. A certificate of compliance shall be required from manufacturers requesting to be a suggested source of supply.

3.5 Marking. Marking of the card guide is not required; however, each unit package shall be marked in accordance with MIL-STD-1285 and include the PIN as specified herein (see 1.2), the manufacturer's name or Commercial and Government Entity (CAGE) code, and date lot codes.

3.6 Recycled, recovered, or environmentally preferable materials. Recycled, recovered, or environmentally preferable materials should be used to the maximum extent possible provided that the material meets or exceeds the operational and maintenance requirements, and promotes economically advantageous life cycle costs.

3.7 Workmanship. Card holders shall be processed in such a manner as to be uniform in quality and shall be free from surface and finish flaws that could affect life or serviceability. Burrs, chipping, and cracking are unacceptable.

4. VERIFICATION

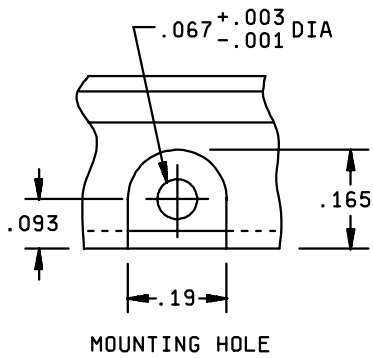
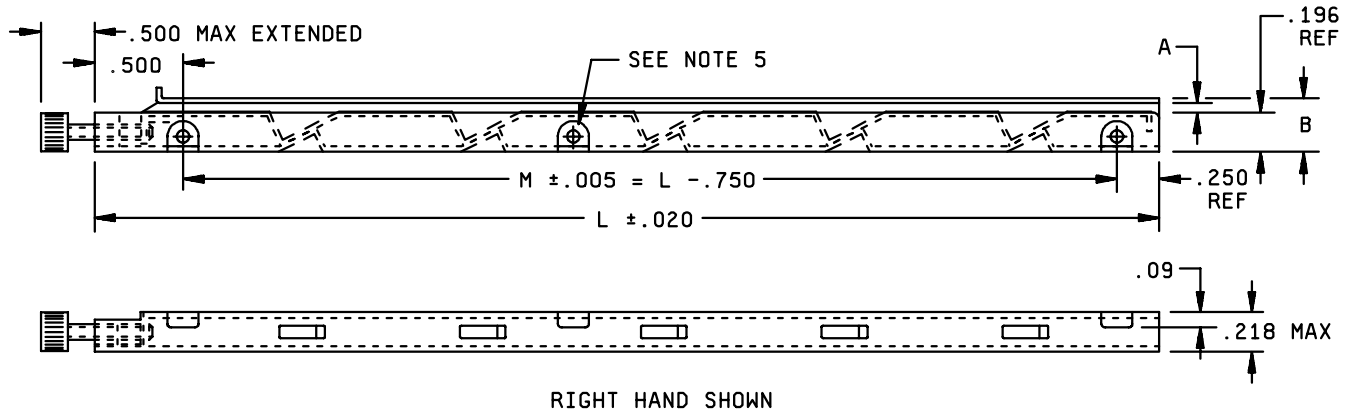
4.1 Sampling and inspection. Unless otherwise specified in the contract or purchase order, the contractor is responsible for the performance of all inspection requirements as specified herein. Except as otherwise specified in the contract, the contractor may use his own or any other facilities suitable for the performance of the inspection requirements specified herein, unless disapproved by the Government. The Government reserves the right to perform any of the inspections set forth in this drawing where such inspections are deemed necessary to assure supplies and services conform to prescribed requirements.

4.2 Conformance inspections.

4.2.1 Inspection of product for delivery. Inspection of product for delivery shall consist of visual and mechanical inspections of interface and physical dimensions (see 3.1), materials (see 3.2), and workmanship (see 3.7). Criteria for defects are listed in 4.2.5.

4.2.2 Optional statement of compliance. The acquiring activity, at its discretion, may accept a statement of compliance in lieu of the manufacturer performing the inspection of product for delivery (see 6.2.b).

DEFENSE SUPPLY CENTER, COLUMBUS COLUMBUS, OHIO	SIZE A	CODE IDENT NO. 14933	DWG NO. 88052
		REV B	PAGE 3



Board thickness	A	B
.025 to .079	.09	.309
.080 to .145	.16	.376

FIGURE 1. Design and dimensions.

DEFENSE SUPPLY CENTER, COLUMBUS COLUMBUS, OHIO	SIZE A	CODE IDENT NO. 14933	DWG NO. 88052
		REV B	PAGE 4

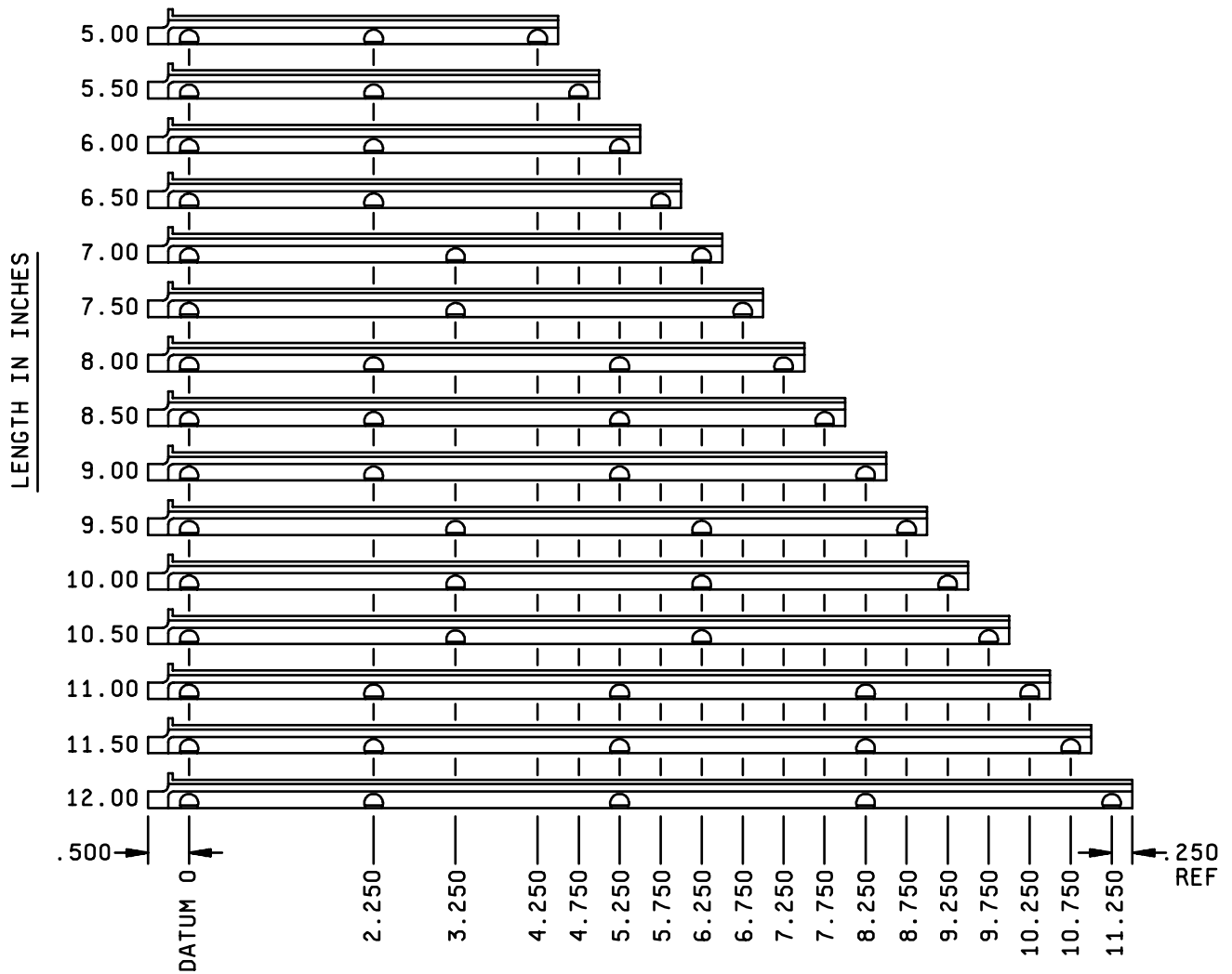


FIGURE 1. Design and dimensions - Continued.

<p>DEFENSE SUPPLY CENTER, COLUMBUS COLUMBUS, OHIO</p>	<p>SIZE A</p>	<p>CODE IDENT NO. 14933</p>	<p>DWG NO. 88052</p>
		<p>REV B</p>	<p>PAGE 5</p>

Inches	mm	Inches	mm	Inches	mm
.001	0.25	.196	4.98	5.00	127.0
.003	0.67	.218	5.54	5.250	133.35
.005	0.13	.250	6.35	5.50	139.7
.008	0.20	.500	12.70	6.00	152.4
.02	0.51	.67	17.0	6.250	158.75
.023	0.58	.750	19.05	6.750	171.45
.067	1.70	2.250	57.15	7.00	177.8
.093	2.36	3.00	76.2	7.250	184.15
.165	4.19	3.250	82.55	7.50	190.5
.19	4.8	4.250	107.95	8.00	203.2
		4.750	120.65	12.00	304.8

NOTES:

1. Dimensions are in inches. Metric equivalents are given for general information only.
2. Unless otherwise specified, tolerance is $\pm .02$ inch (0.5 mm) for two place decimals and $\pm .010$ (0.25 mm) for three place decimals.
3. Card guides between 3.00 and 4.5 inch in length have only two mounting holes. The hole dimensions are per the .500 inch datum 0 and the .250 reference illustrated on the 12.0 inch length card guide.

FIGURE 1. Design and dimensions - Continued.

DEFENSE SUPPLY CENTER, COLUMBUS COLUMBUS, OHIO	SIZE A	CODE IDENT NO. 14933	DWG NO. 88052
		REV B	PAGE 6

TABLE I. Design and dimensions.

Part Number 88052	Housing material B = beryllium copper S= Steel	Board thickness (inches) A = .025 to .070 B = .087 to .132	"L" dimension inches (mm)	Action	
				Left or right L = left	R = right
-001	B	A	3.0 (76.2)		L
-002	S	A	"		L
-003	B	B	"		L
-004	S	B	"		L
-005	B	A	"		R
-006	S	A	"		R
-007	B	B	"		R
-008	S	B	"		R
-009	B	A	3.5 (88.9)		L
-010	S	A	"		L
-011	B	B	"		L
-012	S	B	"		L
-013	B	A	"		R
-014	S	A	"		R
-015	B	B	"		R
-016	S	B	"		R
-017	B	A	4.0 (101.6)		L
-018	S	A	"		L
-019	B	B	"		L
-020	S	B	"		L
-021	B	A	"		R
-022	S	A	"		R
-023	B	B	"		R
-024	S	B	"		R
-025	B	A	4.5 (114.3)		L
-026	S	A	"		L
-027	B	B	"		L
-028	S	B	"		L
-029	B	A	"		R
-030	S	A	"		R
-031	B	B	"		R
-032	S	B	"		R
-033	B	A	5.0 (127.0)		L
-034	S	A	"		L
-035	B	B	"		L
-036	S	B	"		L
-037	B	A	"		R
-038	S	A	"		R
-039	B	B	"		R
-040	S	B	"		R

DEFENSE SUPPLY CENTER, COLUMBUS
COLUMBUS, OHIO

SIZE
A

CODE IDENT NO.
14933

DWG NO.
88052

REV B

PAGE 7

TABLE I. Design and dimensions — Continued.

PIN 88052	Housing material B = beryllium copper S = Steel	Board thickness (inches) A = .025 to .070 B = .087 to .132	"L" Dimension Inches (mm)	Action	
				Left or right L = left	R = right
-041	B	A	5.5 (139.7)		L
-042	S	A	"		L
-043	B	B	"		L
-044	S	B	"		L
-045	B	A	"		R
-046	S	A	"		R
-047	B	B	"		R
-048	S	B	"		R
-049	B	A	6.0 (152.4)		L
-050	S	A	"		L
-051	B	B	"		L
-052	S	B	"		L
-053	B	A	"		R
-054	S	A	"		R
-055	B	B	"		R
-056	S	B	"		R
-057	B	A	7.0 (177.8)		L
-058	S	A	"		L
-059	B	B	"		L
-060	S	B	"		L
-061	B	A	"		R
-062	S	A	"		R
-063	B	B	"		R
-064	S	B	"		R
-065	B	A	7.5 (190.5)		L
-066	S	A	"		L
-067	B	B	"		L
-068	S	B	"		L
-069	B	A	"		R
-070	S	A	"		R
-071	B	B	"		R
-072	S	B	"		R
-073	B	A	8.5 (215.9)		L
-074	S	A	"		L
-075	B	B	"		L
-076	S	B	"		L
-077	B	A	"		R
-078	S	A	"		R
-079	B	B	"		R
-080	S	B	"		R

DEFENSE SUPPLY CENTER, COLUMBUS COLUMBUS, OHIO	SIZE	CODE IDENT NO.	DWG NO.
	A	14933	88052
		REV B	PAGE 8

TABLE I. Design and dimensions — Continued.

PIN 88052	Housing material B = beryllium copper S = Steel	Board thickness (inches) A = .025 to .070 B = .087 to .132	"L" Dimension Inches (mm)	Action	
				Left or right L = left	R = right
-081	B	A	6.5 (165.1)		L
-082	S	A	"		L
-083	B	B	"		L
-084	S	B	"		L
-085	B	A	"		R
-086	S	A	"		R
-087	B	B	"		R
-088	S	B	"		R
-089	B	A	8.0 (203.2)		L
-090	S	A	"		L
-091	B	B	"		L
-092	S	B	"		L
-093	B	A	"		R
-094	S	A	"		R
-095	B	B	"		R
-096	S	B	"		R
-097	B	A	9.0 (228.6)		L
-098	S	A	"		L
-099	B	B	"		L
-100	S	B	"		L
-101	B	A	"		R
-102	S	A	"		R
-103	B	B	"		R
-104	S	B	"		R
-105	B	A	9.5 (241.3)		L
-106	S	A	"		L
-107	B	B	"		L
-108	S	B	"		L
-109	B	A	"		R
-110	S	A	"		R
-111	B	B	"		R
-112	S	B	"		R
-113	B	A	10.0 (254.0)		L
-114	S	A	"		L
-115	B	B	"		L
-116	S	B	"		L
-117	B	A	"		R
-118	S	A	"		R
-119	B	B	"		R
-120	S	B	"		R

DEFENSE SUPPLY CENTER, COLUMBUS
COLUMBUS, OHIO

SIZE
A

CODE IDENT NO.
14933

DWG NO.
88052

REV B

PAGE 9

TABLE I. Design and dimensions — Continued.

PIN 88052	Housing material B = beryllium copper S = Steel	Board thickness (inches) A = .025 to .070 B = .087 to .132	"L" Dimension Inches (mm)	Action	
				Left or right L = left	R = right
-121	B	A	10.5 (266.7)		L
-122	S	A	"		L
-123	B	B	"		L
-124	S	B	"		L
-125	B	A	"		R
-126	S	A	"		R
-127	B	B	"		R
-128	S	B	"		R
-129	B	A	11.0 (279.4)		L
-130	S	A	"		L
-131	B	B	"		L
-132	S	B	"		L
-133	B	A	"		R
-134	S	A	"		R
-135	B	B	"		R
-136	S	B	"		R
-137	B	A	11.5 (292.1)		L
-138	S	A	"		L
-139	B	B	"		L
-140	S	B	"		L
-141	B	A	"		R
-142	S	A	"		R
-143	B	B	"		R
-144	S	B	"		R
-145	B	A	12.0 (304.8)		L
-146	S	A	"		L
-147	B	B	"		L
-148	S	B	"		L
-149	B	A	"		R
-150	S	A	"		R
-151	B	B	"		R
-152	S	B	"		R

4.2.3 Sampling plan. A sample of parts shall be randomly selected in accordance with table II, normal sampling. If one or more defects are found, the lot shall be rejected. Criteria for defects are listed in 4.2.5.

4.2.4 Rejected lots. If an inspection lot is rejected after normal sampling inspection, the manufacturer may rework it to correct the defects, or screen out the defective parts and resubmit for inspection. Resubmitted lots shall be inspected by selecting a random sample of parts in accordance with table II, tightened sampling. If one or more defects are found in this sample, the lot shall be rejected and shall not be supplied to this specification. Resubmitted lots which are acceptable shall be clearly identified as reinspected lots.

DEFENSE SUPPLY CENTER, COLUMBUS COLUMBUS, OHIO	SIZE A	CODE IDENT NO. 14933	DWG NO. 88052
		REV B	PAGE 10

TABLE II. Sampling plan.

Lot size	Normal	Tightened
2 to 25	3	5
26 to 50	5	6
51 to 90	6	7
91 to 150	7	11
151 to 280	10	13
281 to 500	11	16
501 to 1,200	15	19
1,201 to 3,200	18	23
3,201 to 10,000	22	29
10,001 to 35,001	29	35
35,001 and over	29	40

4.2.5 Defective characteristics and properties. Dimensional characteristics are considered defective when out of tolerance. Physical and functional properties are considered defective when outside the specified minimum, maximum, or range as applicable. Workmanship characteristics are considered defective when they would be detrimental to the intended use, performance requirements, or environmental survival of the part.

5. PACKAGING

5.1 Packaging. For acquisition purposes, the packaging requirements shall be as specified in the contract or order (see 6.2). When actual packaging of materiel is to be performed by DoD personnel, these personnel need to contact the responsible packaging activity to ascertain requisite packaging requirements. Packaging requirements are maintained by the Inventory Control Point's packaging activity within the Military Department or Defense Agency, or within the Military Department's System Command. Packaging data retrieval is available from the managing Military Department's or Defense Agency's automated packaging files, CD-ROM products, or by contacting the responsible packaging activity.

6. NOTES

(This section contains information of a general or explanatory nature which may be helpful, but is not mandatory.)

6.1 Intended use. Card holders conforming to this drawing are intended for use when performance specifications do not exist and qualified military devices that will perform the required function are not available for OEM application.

6.2 Ordering data. The contract or purchase order should specify the following:

- a. Complete PIN (see 1.2).
- b. Requirements for delivery of one copy of the conformance inspection data or certificate of compliance that parts have passed conformance inspection with each shipment of parts by the manufacturer.
- c. Requirements for packaging and packing.

DEFENSE SUPPLY CENTER, COLUMBUS COLUMBUS, OHIO	SIZE A	CODE IDENT NO. 14933	DWG NO. 88052
		REV B	PAGE 11

6.3 Supersession data. Previous revisions of this document specified a nine digit PIN and allowed only cadmium plating as a finish for all card holders. Newer versions use either a ten digit PIN, with the extra digit designating the desired finish (either cadmium, ebanol or nickel).

Superseded DSCC drawing PIN in accordance with DD 88052 dated 23 October 1988	Superseding DSCC drawing PIN
88052-001	88052-001C

6.4 Patents. Card holders covered by this drawing may be covered by patent 3,970,198. The Government does not possess a license under this patent for the benefit of manufacturers of the item, either for the Government or for the use in equipment to be delivered to the Government.

6.5 Users of record. Coordination of this document for future revisions are coordinated only with the suggested sources of supply and the users of record of this document. Requests to be added as a recorded user of this drawing should be in writing to: Defense Supply Center, Columbus, ATTN: DSCC/VAC, Post Office Box 3990, Columbus, OH 43216-5000 or by electronic mail at "5998.Documents@dscclia.mil" or by facsimile (614) 692-6939 or DSN 850-6939.

6.6 Suggested sources of supply. Suggested sources of supply are listed herein. Additional sources will be added as they become available. For assistance in the use of this drawing, contact Defense Supply Center, Columbus, ATTN: DSCC-VAC, Post Office Box 3990, Columbus, OH 43216-5000 or by electronic mail "5998.Documents@dscclia.mil" or by facsimile (614) 692-6939 or DSN 850-6939.

DSCC drawing PIN 84168	Vendor similar designation or type number (1)	DSCC drawing PIN 84168	Vendor similar designation or type number (1)	Vendor CAGE	Vendor name, address and contact information
-001	127B-2-6-3-L	-033	127B-2-10-3-L	18915	APW Electronic Solutions 14100 Danielson Street Poway, CA 92064-6898 Tel: (858) 679-4550 Toll Free: (800) 854-7086 Fax: (858) 679-4555 URL: www.apw.com Electronic-mail: sales.electronicsolutions@apw.com
-002	127S-2-6-3-L	-034	127S-2-10-3-L		
-003	127B-4-6-3-L	-035	127B-4-10-3-L		
-004	127S-4-6-3-L	-036	127S-4-10-3-L		
-005	127B-2-6-3-R	-037	127B-2-10-3-R		
-006	127S-2-6-3-R	-038	127S-2-10-3-R		
-007	127B-4-6-3-R	-039	127B-4-10-3-R		
-008	127S-4-6-3-R	-040	127S-4-10-3-R		
-009	127B-2-7-3-L	-041	127B-2-11-3-L		
-010	127S-2-7-3-L	-042	127S-2-11-3-L		
-011	127B-4-7-3-L	-043	127B-4-11-3-L		
-012	127S-4-7-3-L	-044	127S-4-11-3-L		
-013	127B-2-7-3-R	-045	127B-2-11-3-R		
-014	127S-2-7-3-R	-046	127S-2-11-3-R		
-015	127B-4-7-3-R	-047	127B-4-11-3-R		
-016	127S-4-7-3-R	-048	127S-4-11-3-R		

See note at end of table.

DEFENSE SUPPLY CENTER, COLUMBUS COLUMBUS, OHIO	SIZE A	CODE IDENT NO. 14933	DWG NO. 88052
		REV B	PAGE 12

DSCC drawing PIN 84168	Vendor similar designation or type number (1)	DSCC drawing PIN 84168	Vendor similar designation or type number (1)	Vendor CAGE	Vendor name, address and contact information
-017	127B-2-8-3-L	-049	127B-2-12-3-L	18915	APW Electronic Solutions 14100 Danielson Street Poway, CA 92064-6898 Tel: (858) 679-4550 Toll Free: (800) 854-7086 Fax: (858) 679-4555 URL: www.apw.com Electronic-mail: sales.electronicsolutions@ apw.com
-018	127S-2-8-3-L	-050	127S-2-12-3-L		
-019	127B-4-8-3-L	-051	127B-4-12-3-L		
-020	127S-4-8-3-L	-052	127S-4-12-3-L		
-021	127B-2-8-3-R	-053	127B-2-12-3-R		
-022	127S-2-8-3-R	-054	127S-2-12-3-R		
-023	127B-4-8-3-R	-055	127B-4-12-3-R		
-024	127S-4-8-3-R	-056	127S-4-12-3-R		
-025	127B-2-9-3-L	-057	127B-2-13-3-L		
-026	127S-2-9-3-L	-058	127S-2-13-3-L		
-027	127B-4-9-3-L	-059	127B-4-13-3-L		
-028	127S-4-9-3-L	-060	127S-4-13-3-L		
-029	127B-2-9-3-R	-061	127B-2-13-3-R		
-030	127S-2-9-3-R	-062	127S-2-13-3-R		
-031	127B-4-9-3-R	-063	127B-4-13-3-R		
-032	127S-4-9-3-R	-064	127S-4-13-3-R		
-065	127B-2-14-3-L	-097	127B-2-18-3-L		
-066	127S-2-14-3-L	-098	127S-2-18-3-L		
-067	127B-3-14-3-L	-099	127B-4-18-3-L		
-068	127S-3-14-3-L	-100	127S-4-18-3-L		
-069	127B-2-14-3-R	-101	127B-2-18-3-R		
-070	127S-2-14-3-R	-102	127S-2-18-3-R		
-071	127B-3-14-3-R	-103	127B-4-18-3-R		
-072	127S-3-14-3-R	-104	127S-4-18-3-R		
-073	127B-2-15-3-L	-105	127B-2-19-3-L		
-074	127S-2-15-3-L	-106	127S-2-19-3-L		
-075	127B-4-15-3-L	-107	127B-4-19-3-L		
-076	127S-4-15-3-L	-108	127S-4-19-3-L		
-077	127B-2-15-3-R	-109	127B-2-19-3-R		
-078	127S-2-15-3-R	-110	127S-2-19-3-R		
-079	127B-4-15-3-R	-111	127S-4-19-3-R		
-080	127S-4-15-3-R	-112	127B-4-19-3-R		

See note at end of table.

DEFENSE SUPPLY CENTER, COLUMBUS	SIZE	CODE IDENT NO.	DWG NO.
COLUMBUS, OHIO	A	14933	88052
		REV B	PAGE 13

DSCC drawing PIN 84168	Vendor similar designation or type number (1)	DSCC drawing PIN 84168	Vendor similar Designation or type number (1)	Vendor CAGE	Vendor name, address and contact information	
-081	127B-2-16-3-L	-113	127B-2-20-3-L	18915	APW Electronic Solutions 14100 Danielson Street Poway, CA 92064-6898 Tel: (858) 679-4550 Toll Free: (800) 854-7086 Fax: (858) 679-4555 URL: www.apw.com Electronic-mail: sales.electronicsolutions@ apw.com	
-082	127S-2-16-3-L	-114	127S-2-20-3-L			
-083	127B-4-16-3-L	-115	127B-4-20-3-L			
-084	127S-4-16-3-L	-116	127S-4-20-3-L			
-085	127B-2-16-3-R	-117	127B-2-20-3-R			
-086	127S-2-16-3-R	-118	127S-2-20-3-R			
-087	127B-4-16-3-R	-119	127B-4-20-3-R			
-088	127S-4-16-3-R	-120	127S-4-20-3-R			
-089	127B-2-17-3-L	-121	127B-2-21-3-L			
-090	127S-2-17-3-L	-122	127S-2-21-3-L			
-091	127B-4-17-3-L	-123	127B-4-21-3-L			
-092	127S-4-17-3-L	-124	127S-4-21-3-L			
-093	127B-2-17-3-R	-125	127B-2-21-3-R			
-094	127S-2-17-3-R	-126	127S-2-21-3-R			
-095	127B-4-17-3-R	-127	127B-4-21-3-R			
-096	127S-4-17-3-R	-128	127S-4-21-3-R			
-129	127B-2-22-3-L	-145	127B-2-24-3-L			
-130	127S-2-22-3-L	-146	127S-2-24-3-L			
-131	127B-4-22-3-L	-147	127B-4-24-3-L			
-132	127S-4-22-3-L	-148	127S-4-24-3-L			
-133	127B-2-22-3-R	-149	127B-2-24-3-R			
-134	127S-2-22-3-R	-150	127S-2-24-3-R			
-135	127B-4-22-3-R	-151	127B-4-24-3-R			
-136	127S-4-22-3-R	-152	127S-4-24-3-R			
-137	127B-2-23-3-L					
-138	127S-2-23-3-L					
-139	127B-4-23-3-L					
-140	127S-4-23-3-L					
-141	127B-2-23-3-R					
-142	127S-2-23-3-R					
-143	127B-4-23-3-R					
-144	127S-4-23-3-R					

(1) CAUTION: Do not use this number for item acquisition. Items acquired to this number may not satisfy the performance requirements of this drawing.

DEFENSE SUPPLY CENTER, COLUMBUS COLUMBUS, OHIO	SIZE A	CODE IDENT NO. 14933	DWG NO. 88052
		REV B	PAGE 14

X-ON Electronics

Largest Supplier of Electrical and Electronic Components

Click to view similar products for [In-Line Junction Modules](#) category:

Click to view products by [APW](#) manufacturer:

Other Similar products are found below :

[00111975102](#) [6131-202-1358P](#) [6131-207-1158P](#) [6131-207-1558P](#) [6131-207-1758P](#) [6131-209-2558P](#) [6131-217-1758P](#) [6131-258-1958P](#)
[6131-261-2358P](#) [6131-264-1358P](#) [6134-209-19149](#) [6408-203V-09273](#) [M81714/12-20D-2-LC](#) [D38999/26FJ43SB](#) [87.200.2201.3](#)
[87.210.2204.3](#) [87.210.2211.3](#) [88083-10-6PN](#) [88083-10-6PN-L/C](#) [88083-10-6SN](#) [88083-10-6SN-LC](#) [88083-12-10PN-L/C](#) [88083-14-15SN-LC](#)
[88083-14-15SW-L/C](#) [88083-14-4PN-LC](#) [88083-14-5SN-LC](#) [88083-16-26SN-LC](#) [88083-16-8PN-LC](#) [88083-18-8SN-LC](#) [88083-20-41PN-LC](#)
[1210230271](#) [1210640168](#) [1210641064](#) [S53209NR051](#) [M81714/12-22D-2-LC](#) [TJSE20535](#) [TJSE20551](#) [TJSE20706](#) [YCTJ920E12NC098000](#)
[6131-202-2358P](#) [6131-205-2558P](#) [6131-208-2558P](#) [6131-258-2158P](#) [E162N2N0506R](#) [M81714602001](#) [M817142DA1](#) [C81311N21](#)
[CA3108E16S-1PA206](#) [87.200.2205.3](#) [1210401236](#)