

ADAM-5080

ADAM-5081

4-ch Counter/Frequency Module

4/8-ch High Speed Counter/Frequency Module



ADAM-5080



Specifications

General

- **Certification** CE, FM
- **Connectors** 1 x Plug-in screw terminal (# 14 ~ 22 AWG)
- **Enclosure** ABS+PC
- **Power Consumption** 1.5 W (max.)

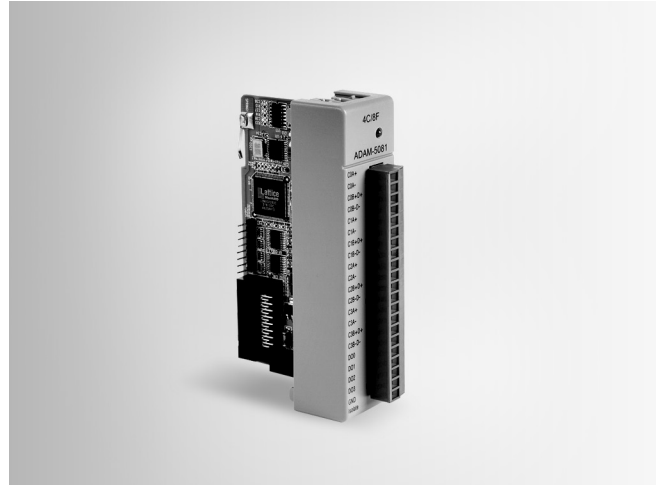
Counter/Frequency

- **Counter Aux. Function** Initial preset, hi-low alarm setting, alarm digital output mapping, overflag
- **Channels** 4
- **Input Frequency** 0.3 ~ 1,000 Hz max. (frequency mode)
5,000 Hz max. (counter mode) TTL only
- **Input Level** Isolated or TTL level
- **Isolation Input Level** Logic level 0: 1 V_{DC} max
Logic level 1: 3.5 ~ 30 V_{DC}
- **Isolation Voltage** 1,000 V_{RMS}
- **Maximum Count** 4,294,967,295 (32 bits)
- **Minimum Input Current** 2 mA (isolated)
- **Minimum Pulse Width** 500 μs (frequency mode)
100 μs (counter mode)
- **Modes** Counter (up/down, bi-direction), Frequency
- **Programmable Digital Filter** 1 ~ 65,000 μsec (Noise Filter Function)
- **TTL Input Level** Logic level 0: 0 ~ 0.8 V_{DC}
Logic level 1: 2.3 ~ 5 V_{DC}

Note: Does not support ADAM-5550 & 5560 Series

Ordering Information

- **ADAM-5080** 4-ch Counter/Frequency Module



ADAM-5081



Specifications

General

- **Certification** CE
- **Connectors** 1 x plug-in screw terminal (# 14 ~ 18 AWG)
- **Power Consumption** 1.1 W (Max.)
- **Enclosure** ABS+PC

Counter/Frequency

- **Channels** 4/8
- **Maximum Count** 4,294,967,295 (32 bit)
- **Input Frequency** 5 Hz ~ 1 MHz max. (frequency mode)
1 MHz max. (counter mode)
- **Input Level** Isolated or TTL level
- **Minimum Pulse Width** 1 μsec. (frequency mode)
1 μsec. (counter mode)
- **Minimum Input Current** 2 mA (isolated)
- **Isolation Input Level** Logic level 0: 3 V_{DC} max,
Logic level 1: 10 ~ 30 V_{DC}
- **TTL Input Level** Logic level 0: 0 ~ 0.8 V_{DC},
Logic level 1: 2.3 ~ 5 V_{DC}
- **Isolation voltage** 2,500 V_{RMS}
- **Modes** Counter (up/down, bi-direction, up, A/B Phase),
Frequency
- **Counter Aux. Function** Initial preset, hi-low alarm setting, alarm digital output mapping, overflag
- **Programmable Digital Filter** 1 ~ 65,000 μsec (Noise Filter Function)

Note: Does not support ADAM-5510 KW series

Ordering Information

- **ADAM-5081** 4/8-ch High Speed Counter/Frequency Module

X-ON Electronics

Largest Supplier of Electrical and Electronic Components

Click to view similar products for [I/O Modules](#) category:

Click to view products by [Advantech](#) manufacturer:

Other Similar products are found below :

[70L-IDC5S](#) [70L-OAC-L](#) [70Z3289-4](#) [G21960000700](#) [G21960002700](#) [G34960002700](#) [G88104401](#) [GUR02](#) [OACU](#) [C4SWOUT](#) [PB16H](#) [SM-IDC15](#) [G34960001700](#) [G77-S](#) [G78-16-E](#) [GP34829091724](#) [GP34960005700](#) [JQP4](#) [ODC-24A](#) [IDC5P](#) [FC6A-N16B1](#) [6421](#) [FC6A-N32B3](#) [70MRCQ32-HL](#) [C200H-LK201-V1](#) [G3TA-OA202SZ-US](#) [DC12](#) [GT1-OD16](#) [GT1-AD04CST](#) [GT1-DA04](#) [B7AM-6BS](#) [GRT1-ML2](#) [GRT1-TS2P](#) [CRT1-ID16TAH-1](#) [70GRCQ24-HS](#) [CRT1-ID08](#) [G7TC-ID16 DC24V](#) [CRT1-ID08-1](#) [84110210](#) [6422](#) [AIIS-DIO32-00A1E](#) [84110410](#) [GT1-OD16MX](#) [GRT1-PC8](#) [G7VC-OC16-B7](#) [G7TC-OC08-1 DC24V](#) [G7TC-IA16 AC200/220V](#) [G7TC-OC08 DC24V](#) [70MRCK24-DIN](#) [2736505](#) [ODC5AQ](#)