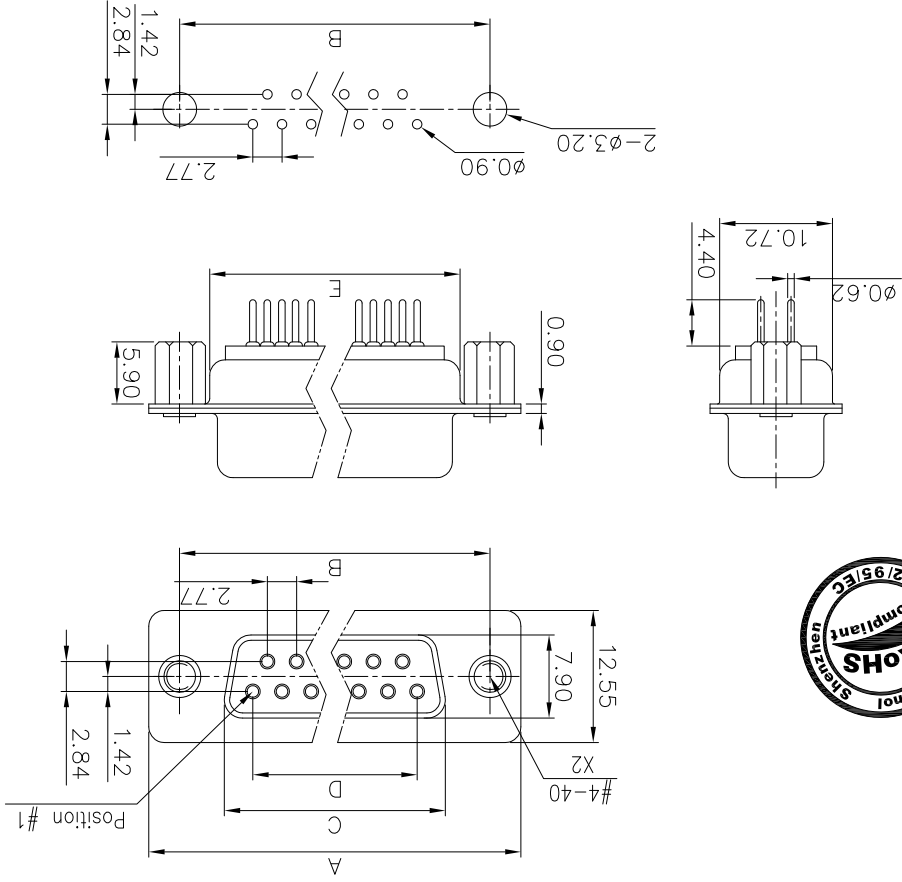


This document is the property of Amphenol Corporation and is delivered on the express condition that it is not to be disclosed, reproduced or used, in whole or in part, for manufacture or sale by anyone other than Amphenol Corporation without its prior consent, & that no right is granted to disclose or to use any information in this document.



NB OF CONTACTS	Dimension			
	A	B	C	D
9	30.84	24.99	16.24	11.09
15	39.24	33.32	24.56	19.39
25	53.04	47.04	38.38	33.24
37	69.32	63.50	54.76	49.86
				57.71

Customer drawing



REVISIONS		SYM	ECN	DESCRIPTION	DATE	APPROVED
1				New drawing	12/17/08	

D-SUB TECHNICAL DATA

SHELL : Steel 100u" min. tin over 50u" min nickel
BODY : Glass filled thermoplastic.
CONTACTS : Brass
 Flame retardant to UL94 V-0 Color Black
 gold flash over 50u" min nickel on mating area.
 100u" min tin over 50u" min nickel on solder area.
REAR INSERT: Brass, 50u" min nickel.
ELECTRICAL: Voltage rating : 250 V Rms to 50 Hz
 Current rating : 3A
 Withstanding Voltage >1000 V Rms to 50 Hz for one minute
 Insulation resistance >5000 M Ohms
 Contact resistance 20 mOhms max.
CLIMATIC : Temperature range -55 °C up to 125°C
 MARKING : Amphenol...(Series No.)
 Commercial reference
 Manufacturing date

PRODUCT CODE

L 77 SD X H XX S OL2

- L: RoHS Compliance
- 77: tinned shell for receptable
- SD: standard density
- Configuration: 09,15,25,37
- Shell Size: E,A,B,C
- H=Rear insert 4-40
- Termination for PCB
- Contact type: S:Female

UNLESS OTHERWISE SPECIFIED	TOLERANCES	U.S. METRIC
FOR MATERIALS AND FINISHES	REMOVE SHARP EDGES	DIMENSIONS
ANGLES +/-		
FRACTIONS .XXX +/-		
.XX +/-		
.X +/-		
0.50		
0.30		
0.20		
CHECKED		
DATE	APPROVAL	
12/17/08		
12/17/08		
FILE: 09,15,25,37		
DRAWING FILE :		
ANGLE OF PROJECTION		
SIZE	A4	
DRAWING NO.	C 177SDXXXXX012	
REV.	1	
SCALE	NONE	
SHEET 1 OF 1		

Amphenol

A

B

C

D

1

2

3

4

4

A

B

C

D

D

X-ON Electronics

Largest Supplier of Electrical and Electronic Components

Click to view similar products for [D-Sub Standard Connectors](#) category:

Click to view products by [Amphenol](#) manufacturer:

Other Similar products are found below :

[DCM37S732N](#) [DAM15P500](#) [DEV09S364GTLF](#) [DEM09P032N](#) [DDM50P732N](#) [DAM15S332N](#) [173109-2218](#) [173109-2466](#) [173109-2436](#)
[173109-2435](#) [56F706-005-LI](#) [56F711-015](#) [015-0341-000](#) [015-0372-008](#) [015-8544-011](#) [017041-0005](#) [020419-0104](#) [012-0515-000](#) [012-9507-](#)
[034](#) [012-9507-114](#) [012-9534-001](#) [020745-0008](#) [609-25P](#) [M24308/2-23Z](#) [M243082310F](#) [M243082410F](#) [M243082411F](#) [M24308/4-21](#)
[CT1A18-11PSA206](#) [CT1N36-5SC](#) [CT2-16S-17PS](#) [CT2-20-15PCAU](#) [CT2-24-12PS](#) [CT2-24-28PSF127A206](#) [CT2-32-9PC](#) [CT6F9767-14-4-](#)
[14S-5PC](#) [CT6FA10SL-4PS](#) [CT7-18-10SC](#) [CT7-18-10SCAU](#) [CT7-18-12SCAU](#) [CT7-18-1PC](#) [CT7-18-1PCAU](#) [CT7-18-21SCAU](#) [M83513/01-](#)
[FC](#) [M83723/76W24619 L/C](#) [M85049/48-3-2F](#) [69001-865](#) [6STD09PCM99B70X](#) [6STD09SCM99B30X](#) [6STD09SCT99S40X](#)