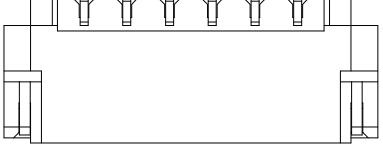
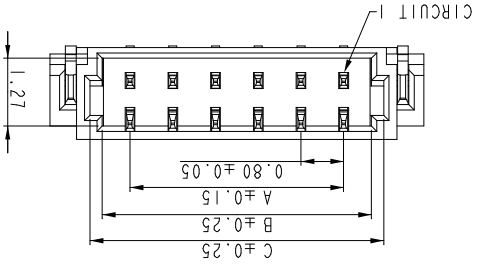
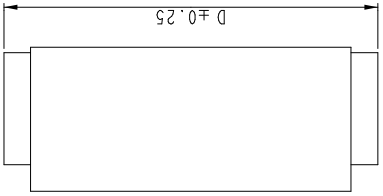
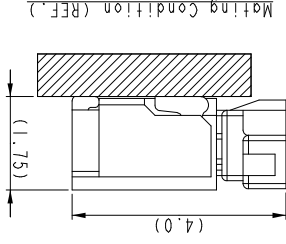
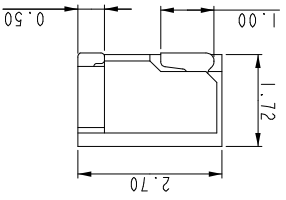


PRODUCT NUMBER
SEE PART NO. TABLE

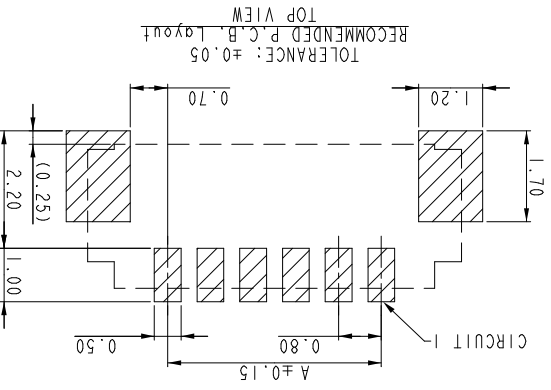


- NOTES:
1. MATERIAL: INSULATION(HALOGEN FREE): LCP, UL94V-0,LOW WIRE COMPATIBLE CONTACT: COPPER ALLOY, t=0.15
 2. MATE WITH RECEPTACLE: AFCI 10145492
 3. THE INSULATION CAN WITHSTAND IR REFLOW 260°C FOR 10 SECONDS
 4. PRODUCT SPEC: GS-12-1444
 5. PACKAGING SPEC: GS-14-2616
 6. ORDERING CODE: 10144041-XX X X X LF
- NO. OF PINS: 02~24 PIN
INSULATION COLOR: 1: BLACK
0: CREAM
CONTACT FINISH: 1: TIN PLATED OVER NICKEL
2: GOLD FLASH OVER NICKEL
PACKAGE: 1: TAPE & REEL



PN	DIML (mm)			
	A	B	C	D
02	0.80	1.84	2.30	3.80
03	1.60	2.64	3.10	4.60
04	2.40	3.44	3.90	5.40
05	3.20	4.24	4.70	6.20
06	4.00	5.04	5.50	7.00
07	4.80	5.84	6.30	7.80
08	5.60	6.64	7.10	8.60
09	6.40	7.44	7.90	9.40
10	7.20	8.24	8.70	10.20
11	8.00	9.04	9.50	11.00
12	8.80	9.84	10.30	11.80
14	10.40	11.44	11.90	13.40
15	11.20	12.24	12.70	14.20
16	12.00	13.04	13.50	15.00
17	12.80	13.84	14.30	15.80
20	15.20	16.24	16.70	18.20
22	16.80	17.84	18.30	19.80
24	18.40	19.44	19.90	21.40

PN	DIML (mm)			
	A	B	C	D
11	8.00	9.04	9.50	11.00
12	8.80	9.84	10.30	11.80
14	10.40	11.44	11.90	13.40
15	11.20	12.24	12.70	14.20
16	12.00	13.04	13.50	15.00
17	12.80	13.84	14.30	15.80
20	15.20	16.24	16.70	18.20
22	16.80	17.84	18.30	19.80
24	18.40	19.44	19.90	21.40



mat'l. code	ISO 1302	ISO 406 ISO 1101	projection	product family	MINITEK
itr	ecn no	dr	date	tolerance unless otherwise specified	mm
angles	linear	linear	scale 1:1	0.8mm Pitch RA Header SMT	
0°x	.XXX±.08	.XXX±.15		dwg no	10144041
dr	TONY LENG	2017-05-22		sheet 1 of 1 size	A3
engr	TONY LENG	2017-05-22		type	Product Customer Drawing
chr	ZK HU	2017-05-22			
appd	TIM YAO	2017-05-22			
sheet	revision A				
index					

X-ON Electronics

Largest Supplier of Electrical and Electronic Components

Click to view similar products for [Headers & Wire Housings](#) category:

Click to view products by [Amphenol](#) manufacturer:

Other Similar products are found below :

[95000-104TRLF](#) [10135584-644402LF](#) [DF62W-EP2022PCA](#) [95000-106TRLF](#) [DF62W-2022SCA](#) [DF62W-EP2022PC](#) [2203348](#) [DF62W-2022SC](#) [1084018](#) [1029039](#) [1084017](#) [802-10-012-10-002000](#) [1112640](#) [1112639](#) [000-34000](#) [0009482033](#) [0009507031](#) [57102-S06-03LF](#) [57202-S52-04LF](#) [PCN6-15S-2.5E](#) [0039019024](#) [58102-G61-06LF](#) [582553-1](#) [0009485154](#) [0009508121](#) [0022285053](#) [0050291907](#) [018731A](#) [LY20-4P-DT1-P1E-BR](#) [02.125.8002.8](#) [60101931](#) [60598-1 \(Cut Strip\)](#) [M1625-3R/100](#) [61062-3](#) [61082-181009](#) [636-1427](#) [638009-1](#) [641938-9](#) [641991-4](#) [644168-1](#) [647662-1](#) [65039-019ELF](#) [65817-002LF](#) [65817-015LF](#) [65863-015LF](#) [66207-023LF](#) [67016-026LF](#) [67046-001LF](#) [67095-007LF](#) [67230-005LF](#)