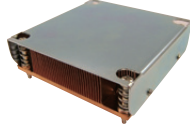


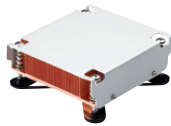
CPU Coolers

Intel LGA1155/1156



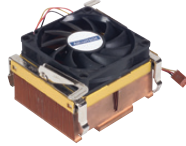
Model Name	1960049408N001	1960047831N001	1960047669N001	1960047670N001
Thermal Dispatch Performance	Intel LGA1156 73W (up to Core i5-660)	LGA1156 95W	Intel LAG1156 95W	Intel LGA1156 95W
Fan	-	7 cm/35.5CFM 5400+/- 10% RPM	8 cm/57.5 CFM 4500+/- 10% RPM	8 cm/57.5 CFM 4500+/- 10% RPM
Heatsink Material	Copper	Copper	Aluminum & Copper heart	Aluminum & Copper
Heatsink Dimensions	85 x 85 x 26 mm (3.35" x 3.35" x 1.02")	83 x 83 x 39.26 mm (3.27" x 3.27" x 1.54")	90 x 90 x 35 mm (3.54" x 3.54" x 1.38")	90 x 90 x 35 mm (3.54" x 3.54" x 1.38")
Dimensions	-	83 x 83 x 55.73mm (3.27" x 3.27" x 2.17")	120 x 120 x 77 mm (4.72" x 4.72" x 3.03")	120 x 120 x 77 mm (4.72" x 4.72" x 3.03")
Weight	611 g	582 g	500 g	500 g
Minimum Chassis Height	1U	2U	4U	4U
Recommended Chassis	ACP-1010/1320	Backplane version of chassis	Motherboard version of chassis	mini-ITX Motherboard version of chassis
Supported Boards	AIMB-580/780/781/782; PCE-5125/5126/5127/7127/5026	AIMB-580/581/582/780/781/782; PCE-5125/5126/5127	AIMB-580/581/582/780/781/782	AIMB-280

Intel Pentium 4 LGA775



Model Name	1960013266T000	1750000332	1750000334
Thermal Dispatch Performance	Pentium 4: Up to 3.4 GHz (90 nm, 84 W, L2: 1 MB) Core 2 Duo: Up to 3.33 GHz (65 nm, 65 W, L2: 4 MB)	Pentium 4: Up to 3.8 GHz (90 nm, 115 W, L2: 1 MB) Core 2 Duo: Up to 3.33 GHz (65 nm, 65 W, L2: 4 MB) Core 2 Quad: Up to 3 GHz (45 nm, 95 W, L2: 12 MB)	Pentium 4: Up to 3.8 GHz (90 nm, 115 W, L2: 1 MB) Core 2 Duo: Up to 3.33 GHz (65 nm, 65 W, L2: 4 MB)
Fan	-	7 cm / 35.5 CFM 5,400 ± 10% RPM	8 cm / 57.7 CFM 4,500 ± 10% RPM
Heatsink Material	Copper	Copper	Aluminum fins & copper heart
Heatsink Dimensions	80 x 80 x 27 mm (3.15" x 3.15" x 1.06")	83 x 83 x 15 ~ 39 mm (3.27" x 3.27" x 0.59" ~ 1.54")	90 x 90 x 32 mm (3.54" x 3.54" x 1.26")
Dimensions	90 x 82.4 x 26 mm (3.54" x 3.24" x 1.02")	83 x 83 x 55 mm (3.27" x 3.27" x 2.17")	110 x 110 x 67 mm (4.33" x 4.33" x 2.64")
Weight	554 g	560 g	550 g
Minimum Chassis Height	1U	2U	4U
Recommended Chassis	ACP-1320 series	Backplane version of chassis	Motherboard version of chassis
Supported Boards	AIMB-766/764/762, PCA-6194/6011/6010, PCE-5124	PCA-6194/6011/6010, PCE-5124	AIMB-256/566/564/562/766/764/763/762

Intel Pentium 4 Socket 478



Model Name	1750000257
Thermal Dispatch Performance	Up to 3.4 GHz (90 nm, 89 W, L2: 1 MB)
Fan	7 cm / 28.9 CFM 4,500 ± 10% RPM
Heatsink Material	Copper
Dimensions	83 x 69 x 55.5 mm (3.27" x 2.72" x 2.19")
Weight	565 g
Minimum Chassis Height	2U
Supported Boards	PCA-6186/6187, AIMB-742/744

Intel Xeon



Model Name	1750000282
Thermal Dispatch Performance	Intel Xeon: Up to 3.6 GHz (90 nm, 110 W, L2: 1 MB)
Fan	6 cm / 34.5 CFM 6,800 ± 10% RPM
Heatsink Material	Copper
Dimensions	82 x 58 x 65.5 mm (3.23" x 2.28" x 2.58")
Weight	624 g
Minimum Chassis Height	4U
Supported Boards	PCE-72xx series
Remarks	-

Special CPU Coolers



Model Name	1750000400
Thermal Dispatch Performance	Pentium 4: Up to 3.8 GHz (90 nm, 115 W, L2: 1 MB)
Fan Speed	7 cm / 35.5 CFM 5,400 ± 10% RPM
Heatsink Material	Copper
Dimensions	89 x 74 x 51 mm (3.50" x 2.91" x 2.01")
Weight	672 g
Minimum Chassis Height	2U
Supported Boards	Only for PCE-5120/5020
Remarks	-

X-ON Electronics

Largest Supplier of Electrical and Electronic Components

Click to view similar products for [CPU & Chip Coolers](#) category:

Click to view products by [Advantech](#) manufacturer:

Other Similar products are found below :

[109X9112PT0H016](#) [FR2UFAN60HSW](#) [LGA1156 2U Cooler](#) [1960058073N001](#) [19FFD124010HB2A7-000001-RS](#) [109X6512A2016](#)
[CEBF0127271803-00](#) [FHS-A9025S20](#) [109X9212PT0H016](#) [1960048820N001](#) [BXSTS200PNRW 915971](#) [AP0512MX-J90-4P-TA-LF](#) [CF-1150SE-R11](#) [1750000282](#) [AmITX-BT TM-FAN-ETT](#) [1960049408N001](#) [CF-775A-RS](#) [1960055362N011](#) [1960053065N001](#)
[1960047831N001](#) [1960047670N001](#) [1960047669N001](#) [1750001660](#) [conga-IA5/CSP](#) [conga-B7XD/CSA-HP-T](#) [UPS-APL01-COOLER-A01](#)
[EP-FNUPACTCLRDC](#) [CF1-0816-0400-0816A](#) [5078C111200E](#) [664-P4505MX-G90-LF](#) [890SP-01000-A-100](#) [890SP-02000-A-100](#) [890SP-03000-A-100](#) [890SP-01500-A-100](#) [890SP-02500-A-100](#) [109X7612H1126](#) [AP0412MX-J70-LF](#) [AP0505HX-J90-4P-TA-LF](#) [AP4512HX-J90-4P-TA-LF](#) [CC001](#) [CF2-0816-0805-1500NA](#) [conga-PA5/i-CSP-T](#) [FHE353526T710T](#) [FHS-K8020S00](#) [EP-FNDCACTCLUPS](#) [SK 570 25 SA](#)
[ICK LED R 40 X 27](#) [BXSTS200C 915970](#) [BXSTS200P 915972](#) [LA 27 K 75 ME 12 V](#)