

PCM-3618

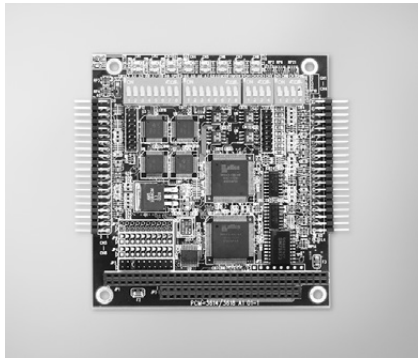
PCM-3640/3641

PCM-3660

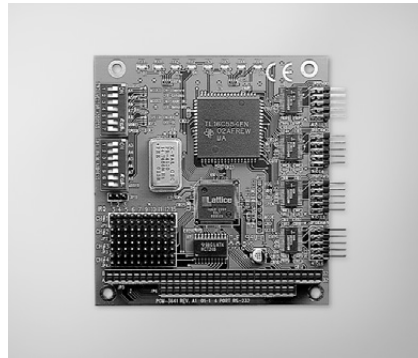
8-port RS-422/485 High-speed
PC/104 Module

4-port RS-232 High-speed
PC/104 Module

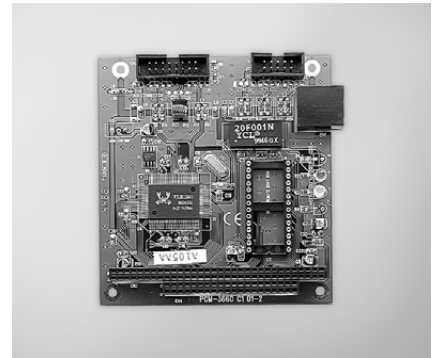
Jumperless Ethernet PC/104 Module



PCM-3618



PCM-3641



PCM-3660



Features

- Automatic RS-485 data flow control
- Shared IRQ settings for each ports
- LED indicators: TX, RX
- Supports Windows 2000/XP/Vista/7
- Supports WinCE 5.0/6.0
- Powerful and easy-to-use utility (ICOM Tools)

Specifications

General

- Card Interface PC/104
- Certifications CE, FCC
- Connectors 8 x DB9-M
- Ports 8
- Power Consumption +5V @ 650 mA

Communications

- Data Bits 5, 6, 7, 8
- I/O Address Range 0 x 000 ~ 0 x 3F8
- IRQ 3, 4, 5, 6, 7, 9, 10, 11, 12, 15
- Parity None, Even and Odd
- Data Signals RS-422: TxD+, TxD-, RxD+, RxD-, CTS+, CTS-, RTS+ and RTS-
RS-485: DATA+, DATA-, CTS+, CTS-
- Speed 50 bps ~ 921.6 kbps
- Stop Bits 1, 1.5, 2
- Termination Resistor 120 Ω

Protection

- EFT Protection 1,000 V_{DC}

Environment

- Operating Humidity 0 ~ 90 % RH
- Operating Temperature 0 ~ 65°C (32 ~ 149°F) (IEC-68-1-1, 2)
- Storage Temperature -25 ~ 80°C (-13 ~ 176°F)

Ordering Information

- PCM-3618 8-port RS-422/485 High-Speed Module

Features

- Transmission speeds up to 460 kbps (PCM-3641)
- Shared IRQ settings for each of 4 RS-232 ports (PCM-3641)
- Standard PC ports: COM1, COM2, COM3, COM4 compatible
- Supports Windows 2000/XP/Vista/7
- Supports WinCE 5.0/6.0
- Powerful and easy-to-use utility (ICOM Tools)

Specifications

General

- Card Interface PC/104
- Certifications CE, FCC
- Connectors 4 x DB9-M
- Ports 4
- Power Consumption +5V @ 200 mA (Typical)
+5V @ 250 mA (Max)

Communications

- Data Bits 5, 6, 7, 8
- Data Signals RS-232: TxD, RxD, RTS, CTS, DTR, DSR, DCD, RI, GND
- I/O Address Range 0 x 0200 ~ 0 x 03F8
- IRQ 3, 4, 5, 6, 7, 9, 10, 11, 12, 15
- Parity None, Even and Odd
- Speed 50 bps ~ 460.3 kbps (PCM-3641)
50 bps ~ 115.2 kbps (PCM-3640)
- Stop Bits 1, 1.5, 2

Environment

- Operating Humidity 0 ~ 90 % RH
- Operating Temperature 0 ~ 65°C (32 ~ 149°F) (IEC-68-1-1, 2)
- Storage Temperature -25 ~ 80°C (-13 ~ 176°F)

Ordering Information

- PCM-3640 4-port RS-232 Module
- PCM-3641 4-port RS-232 High-speed Module

Features

- Automatically detects 8-bit or 16-bit
- AUI connector supports external MAUs
- Onboard 32 KB buffer for multi-packages

Specifications

General

- Boot ROM Address C0000, C8000, D0000, or D8000H
- Card Interface PC/104
- Certifications CE, FCC
- Connectors 1 x PC/104 stackthrough
1 x 10Base-T (RJ-45)
1 x 16-pin insulation displacement connector for AUI
- Power Consumption +5V @ 400 mA max

Communications

- Data Bus 8-bit, 16-bit, or auto-sending
- I/O Address 200, 220, 240, 260, 280, 2A0, 2C0, 300, 320, 340, 380, 3A0
- IRQ 3,4,5,9, 10, 11, 12 or 15
- Standard IEEE 802.3 10 Mbps CSMA/CD 10Base-T Transceiver

Environment

- Operating Humidity 10 ~ 90% RH
- Operating Temperature 0 ~ 70°C (32 ~ 158°F)
- Storage Temperature -15 ~ 80°C (5 ~ 176°F)

Ordering Information

- PCM-3660 Jumperless Ethernet Module

X-ON Electronics

Largest Supplier of Electrical and Electronic Components

Click to view similar products for [Ethernet Modules](#) category:

Click to view products by [Advantech](#) manufacturer:

Other Similar products are found below :

[1026937](#) [1026932](#) [M38510/00302BCA](#) [70001610](#) [70001634](#) [850-15633](#) [PD-AS-951/12-24](#) [GX-OC1601](#) [1402407](#) [I210T1](#) [I350T4V2](#)
[SBL2EX](#) [SL170115](#) [GX-OD1612](#) [CPTS-4R4E-R](#) [TDKEZW3](#) [I350F2](#) [I350F2BLK](#) [I350T2V2](#) [V23993-USB1029A](#) [100-POE4](#) [105FX-ST](#)
[105TX-SL](#) [SEG305-T](#) [70001992](#) [70001993](#) [708TX](#) [854-19720](#) [I350T4V2BLK](#) [I350T2V2BLK](#) [I210T1BLK](#) [PD-OUT/MBK/S](#) [SX-BR-](#)
[4600WAN2-US](#) [W4S105C](#) [X710DA4FHBLK](#) [I350T2V2BLK](#) [936714](#) [GX-ID1611](#) [3G8F7-DRM21-E](#) [EKI-2525I-BE](#)
[BCM53426A0KFSBG](#) [PCM-24R2GL-AE](#) [96NIC-1G4P-PE-IN2](#) [0.70001777](#) [BCM53402A0KFSBG](#) [105FXE-SC-15-POE](#) [PD-OUT/MBK/G](#)
[856-15410](#) [X520QDA1](#) [BCM84794A1KFSBG](#) [X520DA2OCP](#)