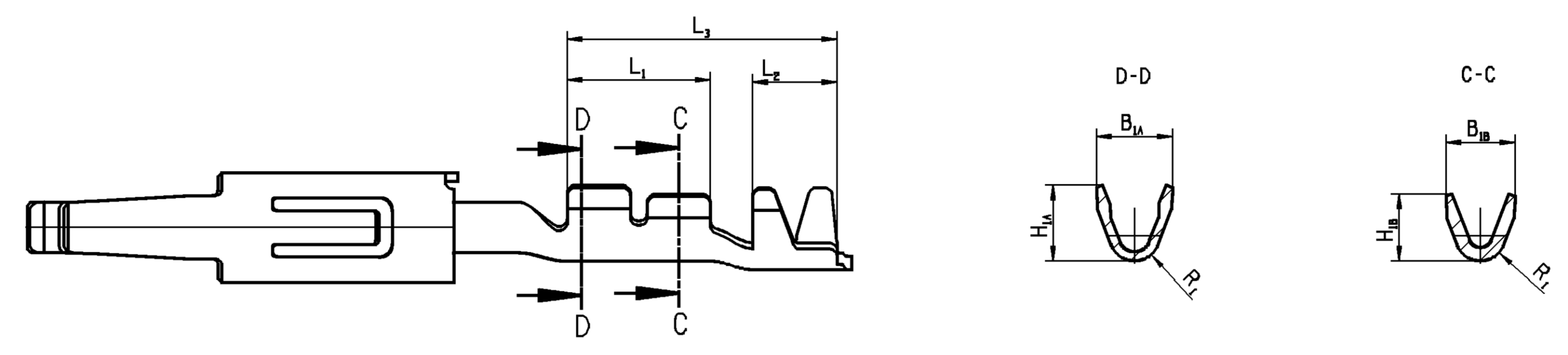


DV _{min}	L _{min}	L ₃ ± 0.2	L ₂	L ₁	X _z	R ₂ ± 0.1	R ₁ ± 0.2	H _z ± 0.2	H _B ± 0.2	H _A ± 0.2	H ₁ ± 0.2	B ₂ ± 0.2	B _A ± 0.2	B ₁ ± 0.2	CRIMP TYPE	CROSS SECTION QUERSCHNITT MMF
2,50	19,4 ^{+0,1}	6,4	2,0	3,4	0,2	0,9	0,6	1,95	1,55	1,8					3	0,13
2,40	19,4	6,4	2,0	2,4	0,2	1,02	0,72	2,9			2,1	2,9	1,65	1,8	2	0,35 - 0,50
2,40	19,4	6,4	2,0	3	0,2	1,22	0,92	3,4			2,8	3,2		2	2	0,75 - 1,00
2,40	19,4	6,2	1,5	3	0,2	1,22	0,92	3,80 ± 0,3			2,8	3,70 ± 0,3		1	1	2x0,35/ 2x0,50
2,50	19,4 ^{+0,1}	6,4	2,0	3	0,2	1,4	1,05	4,15			3,15	3,7		3	2	1,50
2,50	19,4 ^{+0,1}	6,4	2,0	2,4	0,2	1,02	0,72	2,9			2,1	2,9		2	2	0,20 - 0,35
2,50	19,4 ^{+0,1}	6,4	2,0	3	0,2	1,22	0,92	3,4			2,8	3,2		2	2	0,50 - 1,00

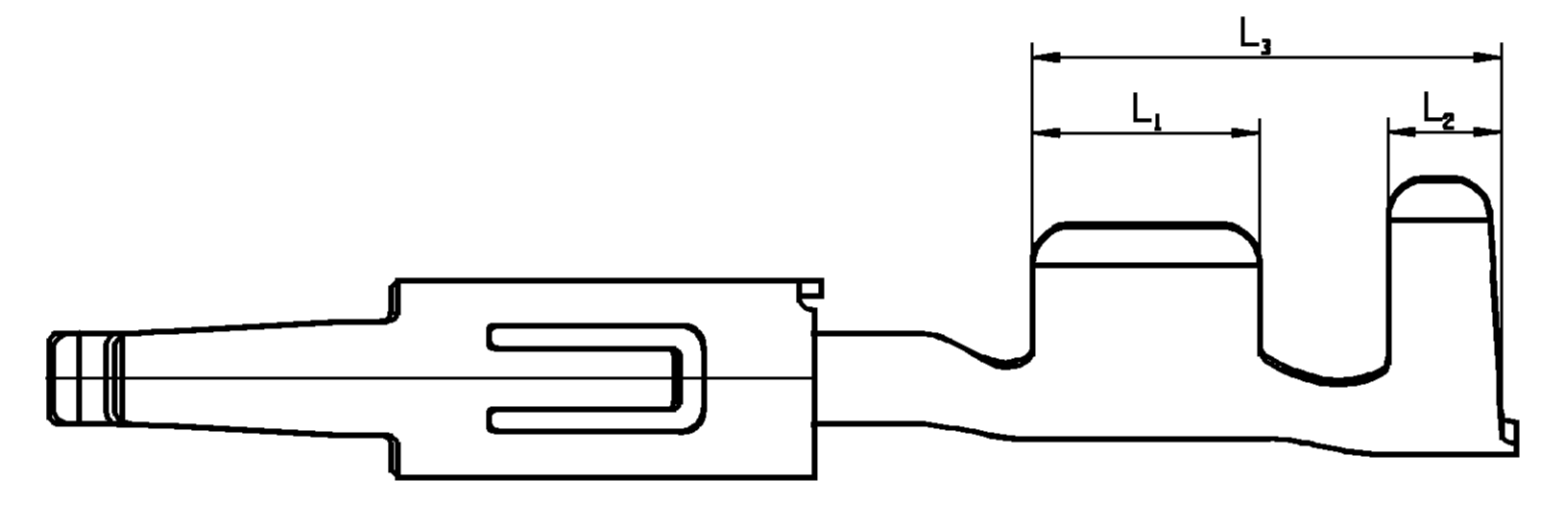
G ± 0.05	RECOMMENDED APPLICATION MALE BLADE THICKNESS EMPFOHLENE STIFT DICKE	MATERIAL	SURFACE OBERFLAECHE	CROSS-SECTION QUERSCHNITT MMF	R	CRIMP TYPE	TERMINAL NO. KONTAKTTEIL NR.	PART REV	DATE DATUM	WEIGHT MASSE G
0.2 MM	0.8 MM	CUNSI C1902 / C1910	FSN	1.50	1.45 ^{+0.05}	2	19544265	02	01A107	0.30
				0.75 - 1.00	1.45 ^{+0.05}	2	19544263	02	01A107	0.28
				0.35 - 0.50	1.45 ^{+0.05}	2	19544261	02	01A107	0.27
		CUFE2P C1940	AU	1.50	1.45 ^{+0.05}	2	19346006	02	01A107	0.30
				0.75 - 1.00	1.45 ^{+0.05}	2	19345998	02	01A107	0.28
				0.35 - 0.50	1.45 ^{+0.05}	2	19345992	02	01A107	0.27
0.05 MM	0.6 MM	CUFE2P C1940	FSN	1.50	1.45 ^{+0.05}	3	1976948	01	02A102	0.25
				0.75 - 1.00	1.45 ^{+0.05}	2	19346002	02	01A107	0.30
				0.35 - 0.50	1.45 ^{+0.05}	2	19345994	02	01A107	0.28
		CUFE2P C1940	AU	1.50	1.45 ^{+0.05}	2	19345988	02	01A107	0.27
				0.75 - 1.00	1.45 ^{+0.05}	2	19345988	02	01A107	0.28
				0.35 - 0.50	1.45 ^{+0.05}	1	19346009	02	01A107	0.29
0.05 MM	0.6 MM	CUFE2P C1940	FSN	0.50 - 1.00	1.45 ^{+0.05}	2	1972077	01	14A108	0.28
				0.20 - 0.35	1.45 ^{+0.05}	2	1972076	01	14A108	0.27
				0.20 - 0.35	1.45 ^{+0.05}	2	1972078	01	14A108	0.28
		CUFE2P C1940	AU	1.50	1.45 ^{+0.05}	2	1958185	03	01A107	0.30
				0.75 - 1.00	1.45 ^{+0.05}	2	1954401	03	01A107	0.28
				0.35 - 0.50	1.45 ^{+0.05}	2	1954399	03	01A107	0.27
CUFE2P C1940	FSN	1.50	1.45 ^{+0.05}	3	1976366	01	02A102	0.25		
		0.75 - 1.00	1.45 ^{+0.05}	2	1957989	03	01A107	0.30		
		0.35 - 0.50	1.45 ^{+0.05}	2	19396705	04	01A107	0.28		
CUFE2P C1940	FSN	0.75 - 1.00	1.45 ^{+0.05}	2	19396704	04	01A107	0.27		
		0.35 - 0.50	1.45 ^{+0.05}	1	19396706	04	01A107	0.29		
		0.35 - 0.50	1.45 ^{+0.05}	3	1980418	01	22A101	0.25		

DATE	REV	BY	CHKD	ZONE	REVISION HISTORY	AUTH	DR	APVD
22AP10	07	AA						
18JAI1	U	07	AA		C-E10			
18JAI1	R	07	AB		D11			
08SE11	R	07	AC		C12			
21OC11	R	07	AD		M 9-10			
26JAI2	R	07	AE		B12			
30JUL12	R	08						
02AUI2	R	09						
24AUI2	R	09	AF		M11			
13NO13	R	09	AG		M6			

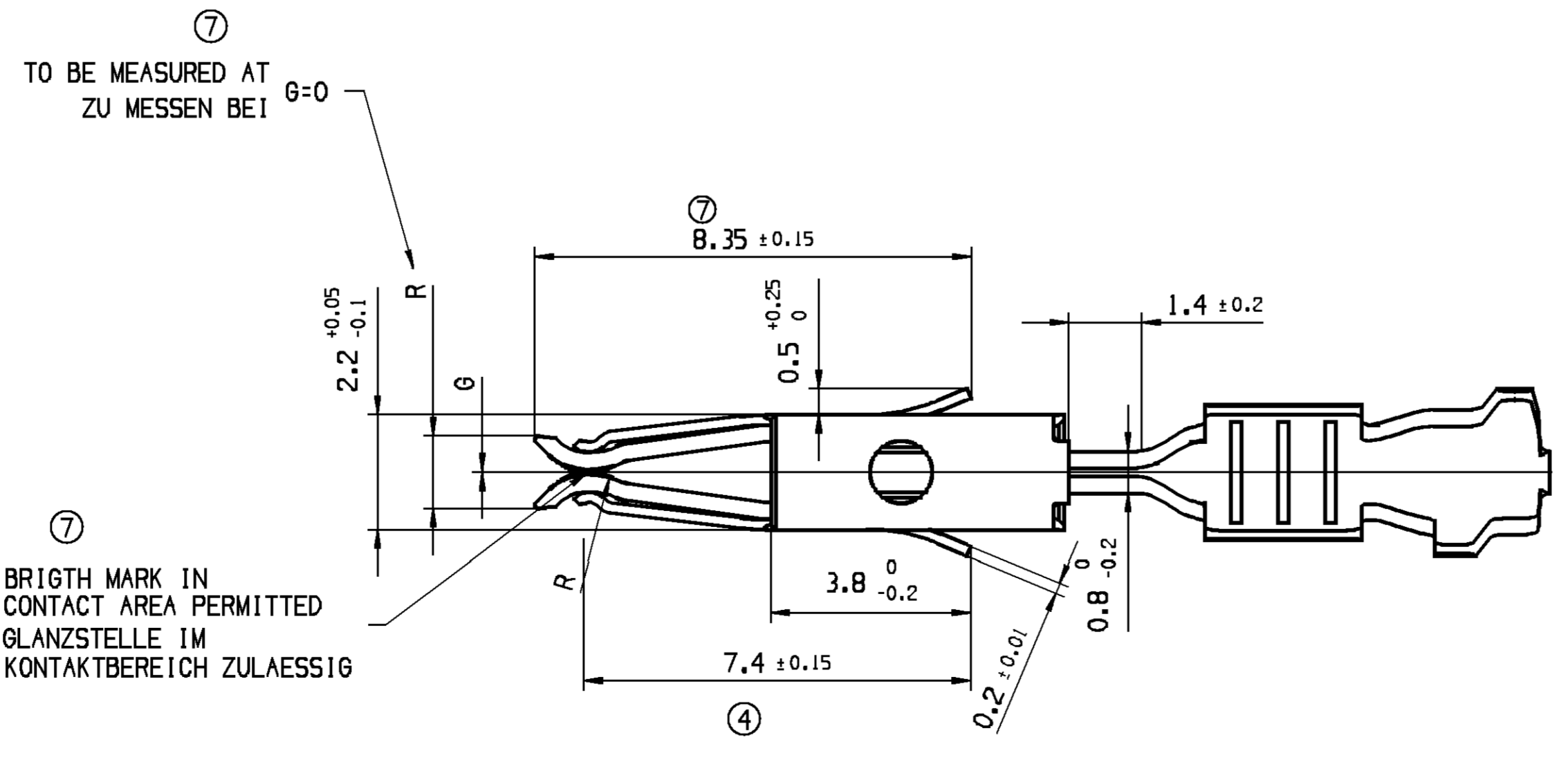
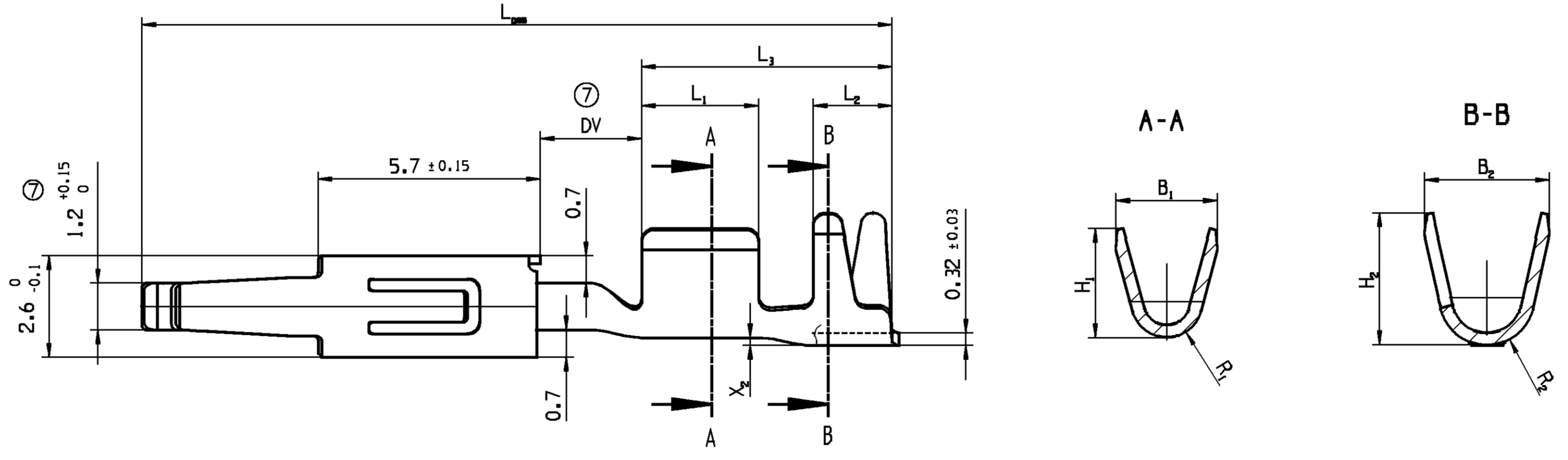
CRIMP TYPE 3
MISSING DIMENSIONS SEE CRIMP TYPE 2



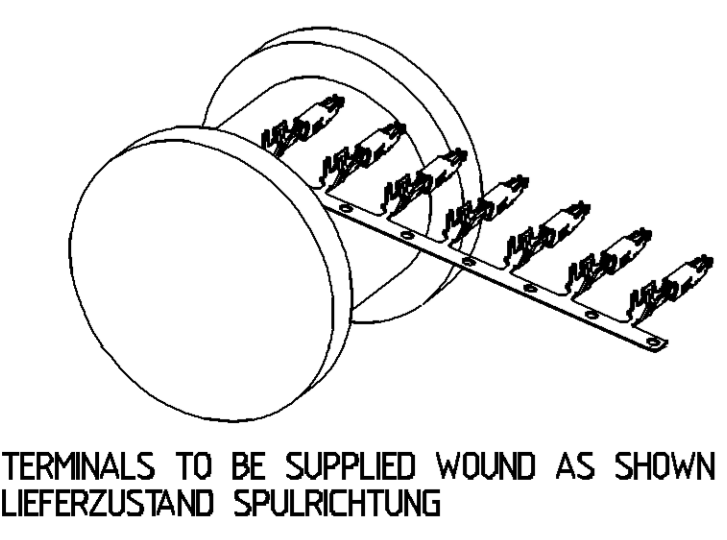
CRIMP TYPE 1
MISSING DIMENSIONS SEE CRIMP TYPE 2



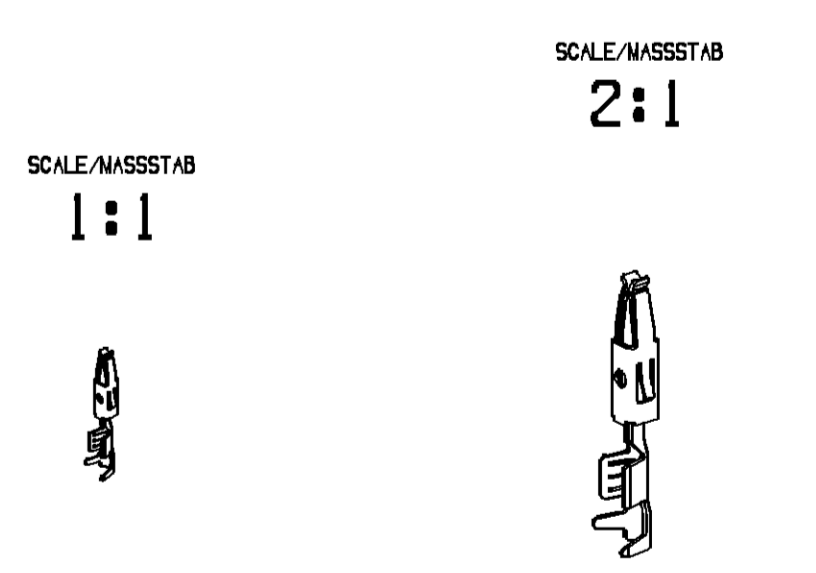
CRIMP TYPE 2



NOTES:
BEWERTUNG:
 ENGAGE FORCE: WITH GAP SIZE 0-0.1MM CHECKED WITH GAUGE PART-NO.: 10803465
 STECKKRAFT : MIT SPALTMASS 0-0.1MM GEMESSEN MIT LEHRE PART-NO.: 10803465
 ENGAGE FORCE: WITH GAP SIZE 0.2±0.05MM CHECKED WITH GAUGE PART-NO.: 10757844
 STECKKRAFT : MIT SPALTMASS 0.2±0.05MM GEMESSEN MIT LEHRE PART-NO.: 10757844
 PERMISSIBLE DISASSEMBLING TOOL PART-NO.:
 ZULAESSIGES ENTRIEGELUNGSWERKZEUG PART-NO.:
 CRIMP MANUFACTURING PARAMETERS AND TOOLING ACCORDING TO DELPHI-SPECIFICATION
 CRIMPVERARBEITUNGSPARAMETER UND WERKZEUGE GEMAESS DELPHI-SPECIFICATION
 SLEEVE MATERIAL: X10CRNI188, SAE 301, DIN EN 1051
 UEBERFEDER MATERIAL: X10CRNI188, SAE 301, DIN EN 1051



TERMINALS TO BE SUPPLIED WOUND AS SHOWN
LEFERZUSTAND SPULRICHTUNG



DELPHI
 DELPHI DEUTSCHLAND GMBH
 D-42119 MURRSTAL
 COPYRIGHT 2001 DELPHI CORPORATION AND/OR ITS AFFILIATES. ALL RIGHTS RESERVED.
 THIS DRAWING IS THE PROPERTY OF DELPHI CORPORATION AND CONTAINS DELPHI CONFIDENTIAL INFORMATION. THE REPRODUCTION, DISTRIBUTION AND UTILIZATION OF THIS DOCUMENT OR ITS CONTENTS OR PARTS THEREOF, AS WELL AS COMMUNICATION OF ANY CONTENT TO OTHERS, WITHOUT EXPRESS AUTHORIZATION, IS PROHIBITED.
 DISE ZEICHNUNG IST EIGENTUM DER FIRMA DELPHI UND ENTHAEHLT DELPHI VERTRAULICHE INFORMATIONEN DIE REPRODUKTION VERTEILUNG UND NUTZUNG DIESER DOKUMENTES ODER SEINER ZUEHRENDEN GAB ODER DER AUFEN ALS KOPPIERUNG VON BELEGEN INHAUT ZU ANDEREN, IST OHNE BEFUGNIS VERBODEN.
 DR: WIRTH
 APVD1: CVASA
 APVD2: WISNIEWSKI
 APVD3:
 APVD4:
 APVD5:
 MATERIAL: SEE CHART
 DRAWING NAME: DSO 1.50 TERMINAL UNSEALED
 DSO 1.50 KONTAKT UNGEDICHTET
 DRAWING NUMBER: 15396741
 SCALE: 10:1
 FRAME NO: 1 OF 1
 SHEET NO: 1 OF 1
 STB: R
 REV: D9
 INP: AG

DELPHI
 PART DRAWING
 UNLESS OTHERWISE SPECIFIED
 GENERAL TOLERANCES ACCORDING TO:
 GD&T ACCORDING TO:
 FIRST ANGLE PROJECTION
 SHARP CORNER TOLERANCE
 DIMENSIONAL TOLERANCE (MM) CHART D
 FROM TO TOLERANCE UNLESS OTHERWISE SPECIFIED
 0 12 > 12
 ±0.1 ±0.2 ±0.2
 ANSULAH TOLERANCE #22
 DO NOT SCALE
 USE MATH DATA
 REFERENCE
 R 0.2 MAX
 R 0.1 MAX

X-ON Electronics

Largest Supplier of Electrical and Electronic Components

Click to view similar products for [Automotive Connectors](#) category:

Click to view products by [Delphi](#) manufacturer:

Other Similar products are found below :

[003-018-000](#) [600858](#) [60403001](#) [60993906-B](#) [60993913-B](#) [629515004020001](#) [M902-2131](#) [M902-2161](#) [M902-2344](#) [72.330.1035.1](#)
[73.353.4028.0](#) [F118010](#) [F119300-B](#) [F132210](#) [F132210-B](#) [F166900](#) [F180100](#) [F258300](#) [F258300-B](#) [F294300-B](#) [F339100](#) [F339700](#) [F358300-](#)
[B](#) [F374110](#) [F407400](#) [F412210](#) [F427600](#) [F444110](#) [F487000](#) [F495100-B](#) [F500900-B](#) [F509500B-B](#) [770444-1](#) [776880-1](#) [827153-1](#) [881735-1](#)
[8N1515-32-24P](#) [9-1326727-8](#) [9-1326729-8](#) [925467-1](#) [925474-1](#) [928905-1](#) [936398-2](#) [964562-1](#) [964562-4](#) [964731-2](#) [965051-1](#) [968782-1](#)
[GT17SA-8DS-HU](#) [GT17VS-10DP-5.2CF](#)