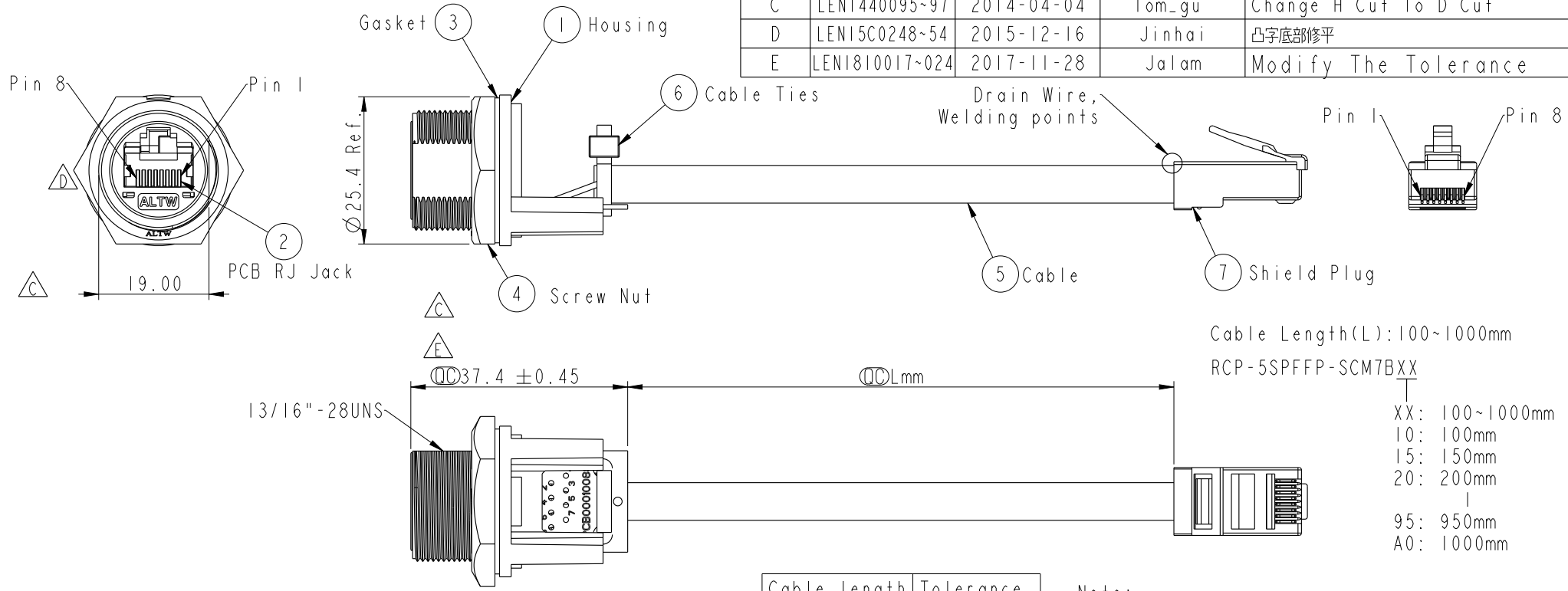


THIS DOCUMENT IS SUBJECT TO CHANGE WITHOUT NOTICE. IT IS CONFIDENTIAL AND A PROPERTY OF AMPHENOL LTW. DISCLOSURE TO THIRD PARTY HAS TO BE AUTHORIZED BY AMPHENOL LTW.

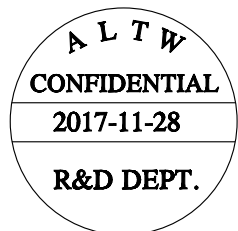
| REV. | ECN NO.        | DATE       | SIGN   | DESCRIPTION           |
|------|----------------|------------|--------|-----------------------|
| C    | LEN1440095~97  | 2014-04-04 | Tom_gu | Change H Cut To D Cut |
| D    | LEN15C0248~54  | 2015-12-16 | Jinhai | 凸字底部修平                |
| E    | LEN1810017~024 | 2017-11-28 | Jalam  | Modify The Tolerance  |



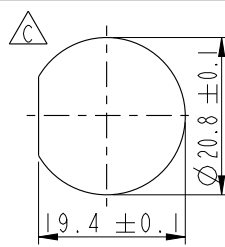
Cable Length(L): 100~1000mm  
 RCP-5SPFFP-SCM7BXX  
 XX: 100~1000mm  
 10: 100mm  
 15: 150mm  
 20: 200mm  
 |  
 95: 950mm  
 A0: 1000mm

| Cable length | Tolerance |
|--------------|-----------|
| 0.0~100 mm   | ±10 mm    |
| 101~300 mm   | ±15 mm    |
| 301~1000 mm  | ±20 mm    |

- Note:
- \*  $\varnothing$  Important Dimension
  - \* Waterproof Rate : IP67 Mated
  - \* Housing : Nylon+GF, UL 94V-0, BLACK
  - \* Screw Nut : Nylon+GF, BLACK
  - \* Gasket : Silicone, UL 94V-0, Gray.
  - \* PCB: FR-4
  - \* Jack : PBT Polyester UL 94V-0
  - \* Use without Waterproof cap or Dust cap  
For Panel Thickness Max: 4.2mm
  - \* Use with Waterproof cap or Dust cap  
For Panel Thickness Max: 3.0mm
  - \* Screw torsion value range: 8~12kgf-cm



| Shield  | Drain Wire   | 接地線  | Shield |             |
|---------|--------------|------|--------|-------------|
| 8       | Brown        | 棕    | 8      | Twist       |
| 7       | White/Brown  | 白/棕  | 7      |             |
| 6       | Green        | 綠    | 6      | Twist Twist |
| 5       | White/Blue   | 白/藍  | 5      |             |
| 4       | Blue         | 藍    | 4      | Twist       |
| 3       | White/Green  | 白/綠  | 3      |             |
| 2       | Orange       | 橘    | 2      | Twist       |
| 1       | White/Orange | 白/橘  | 1      |             |
| Jack    | Wire Color   | Plug |        |             |
| Pin Out |              |      |        |             |



|   |                |                                 |   |
|---|----------------|---------------------------------|---|
| UNIT: mm  |                |                                 | TITLE<br>RJ45, C SIZE, MATED WATERPROOF |
| TOLERANCE<br>.X ±0.25<br>.XX ±0.1<br>.XXX ±0.05<br>ANGLES ±1° | SCALE<br>1:1   | SIZE<br>A4                      | SHEET<br>1 OF 1                         |
| REV.<br>E   | WC-REV.<br>B.5 | $\varnothing$ : Inspection item |   |

**Amphenol LTW**  
 安費諾亮泰企業股份有限公司

|                              |                       |                    |
|------------------------------|-----------------------|--------------------|
| ITEM NO                      | DRAWN BY<br>Jalam     | DATE<br>2017-11-28 |
| DWG NO<br>RCP-5SPFFP-SCM7BXX | CHECKED BY<br>Feng_Li | DATE<br>2017-11-28 |
| CUSTOMER<br>ALTW             | APPROVED BY<br>Jerry  | DATE<br>2017-11-28 |

## X-ON Electronics

Largest Supplier of Electrical and Electronic Components

*Click to view similar products for [Modular Connectors](#) / [Ethernet Connectors](#) category:*

*Click to view products by [Amphenol](#) manufacturer:*

Other Similar products are found below :

[RJE231881317T](#) [MP1010RX-1000](#) [MP44RX-1000](#) [GAX-3-66](#) [GAX-8-62](#) [93606-0253](#) [GD-A-44](#) [GDCX-PA-66-50](#) [GDCX-PN-64](#) [GDCX-PN-66](#) [GDCX-PN-66-50](#) [GDLX-A-66](#) [GDLX-A-88](#) [GDLX-N-66](#) [GDLX-S-88K](#) [GDTX-S-88-50](#) [GDX-PA-1010](#) [GLX-N-1010M-BLK](#) [GLX-N-44M](#) [GLX-S-88M-BLK](#) [GMX-N-1010](#) [GMX-S-1010](#) [GMX-S-66](#) [GMX-SMT2-N-1010](#) [GMX-SMT2-N-64-50](#) [GMX-SMT2-S6-88](#) [GMX-SMT4-N-88](#) [GPX-2-64](#) [GRT1-BT1-5](#) [GSGX-N-2-88](#) [GSX-NS2-88-3.05](#) [GSX-NS2-88-3.05-50](#) [GSX-NS-88-3.05-30](#) [GSX-NS-88-3.05-50](#) [GSX-NS-88-3.68](#) [1-1775629-2](#) [GWLX-S-88-GR](#) [GWLX-S9-88-YG](#) [1300500326](#) [1300500227](#) [1300530003](#) [1300570002](#) [1324640-4](#) [RJ11FTVC2G](#) [RJ11FTVC2N](#) [RJFTVX2SA1G](#) [132764-001](#) [1400000](#) [1413235](#) [MP88X-1000](#)