

T6634ST 5V 2.5A US Plugtop



Features:

- For use with Arduino & BeagleBone
- Small & Compact US Plug design
- USA Fixed AC Head
- Level VI ErP/EuP efficiency compliant
- MTBF >50,000 hours
- 1 Year Warranty



Output Characteristics

Part Number	T6634ST
Voltage	+5V
Current Max.	2.5A
Current Min.	0A
Power (watts)	12.5W
Line Regulation	+/- 2%
Ripple & Noise (mV p-p)	300 mVp-p Maximum
Output Cord	Wire: 18AWG Jack plug: 5.5*2.1*12mm

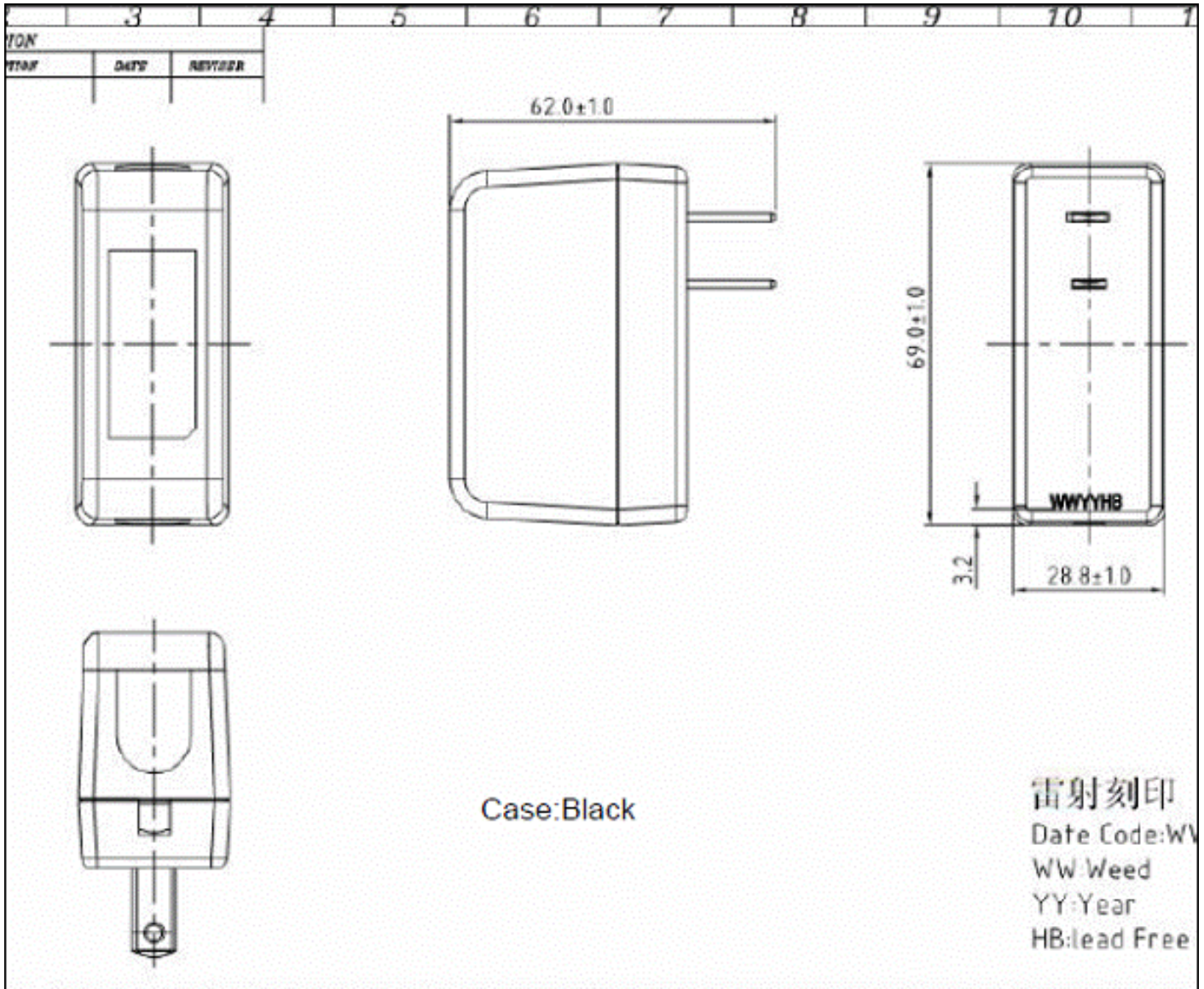
Input Characteristics

Rated Input Voltage	100-240Vac
Full Input Voltage Range	90-264Vac
Rated Frequency	50-60Hz
Full Frequency Range	47-63Hz
Input Current	0.5A
Input Plug	USA 2 Pin

Safety, Mechanical and Other Characteristics

Model Number	T6634ST
Dimensions (LxWxH)	70mm X 29mm X 62mm
Weight (Approx)	70g
Leakage Current	0.25mA max
Operating Temperature	0°C to 40°C
Storage Temperature	-20°C to 60°C
Operating Humidity	20% to 85%
Storage Humidity	5% to 95%
Safety Standard	UL
EMI Standard	CE (EN55022)
MTBF	50K Hours (mean time before failure)

T6634ST Drawing



Output Plug: 2.1 x 5.5mm

X-ON Electronics

Largest Supplier of Electrical and Electronic Components

Click to view similar products for [Wall Mount AC Adapters](#) category:

Click to view products by [Stadium Group](#) manufacturer:

Other Similar products are found below :

[76000738](#) [76000756-B10](#) [ADP-163 E](#) [ADP-159 A](#) [PSAC05A-050L6](#) [RLMDT361800](#) [TE30A1803F01](#) [0650-00005](#) [P25A14E-R1C](#) [SWI24-12-N-P6R](#) [TRH25033-A-02E01-Level-VI](#) [DA5-050US-B](#) [DA5-050UK-B](#) [RLMDT701800](#) [76000756](#) [DA5-050EU-B](#) [WSU120-2000-R13](#) [5V1A-USB](#) [AC-DC ADAPTER 160W](#) [WSU120-2000-13](#) [WSU150-0800-13](#) [76000980](#) [WSU075-3200-13](#) [WSU090-2500-13](#) [WSU050-2000-R13](#) [WSU240-1000-13](#) [WSU090-3500-R13](#) [WSU075-1500-13](#) [WSU135-1330-13](#) [WSU045-1500-13](#) [WSU090-2500-R13](#) [WSU240-1500-13](#) [WSU180-0660-13](#) [WSU075-1500-R13](#) [WSU090-1300-13](#) [WSU180-1330-R13](#) [NTPS-24-TT-700](#) [BB-SMI1812VP230C1](#) [WSU150-1600-13](#) [WSU050-1500-13](#) [WSU090-0800-13](#) [WSU180-0450-13](#) [WSU150-0560-R13](#) [WSU135-0880-13](#) [WSU120-3000-13](#) [WSU120-1000-R13](#) [WSU090-1300-R13](#) [WSU060-4000-13](#) [WSU060-1250-13](#) [WSU050-4000-13](#)