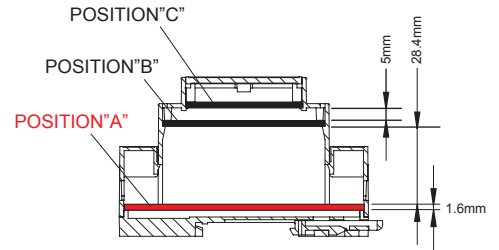
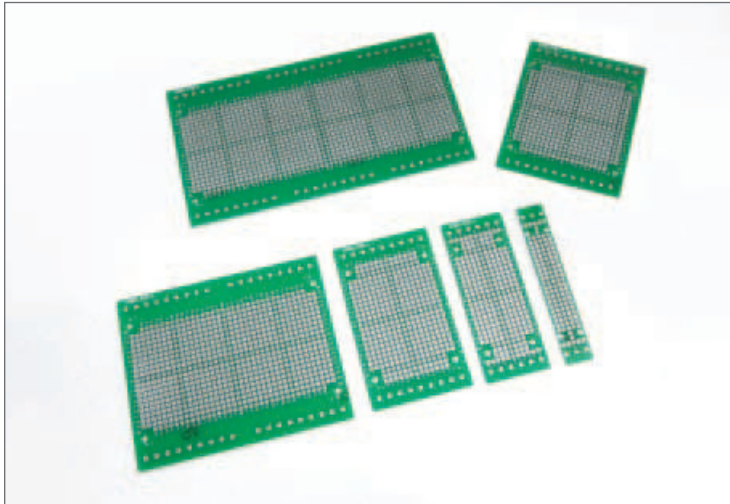


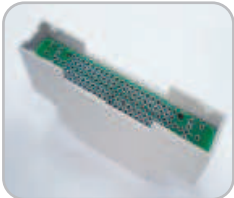
PCB and Terminal Block

PCB of position " A" for DXMG use

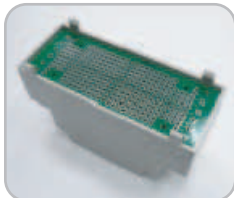


ITEM No.	EXTERNAL DIMENSION(mm)		
	LENGTH	WIDTH	HEIGHT
D1MG-PCB-A	14.3	86.9	1.6
D2MG-PCB-A	32.8	86.9	1.6
D3MG-PCB-A	50	86.9	1.6
D4MG-PCB-A	67.8	86.9	1.6
D6MG-PCB-A	102.8	86.9	1.6
D9MG-PCB-A	156.2	86.9	1.6

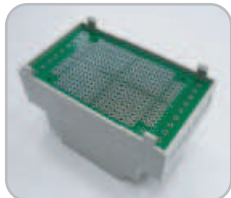
Example:



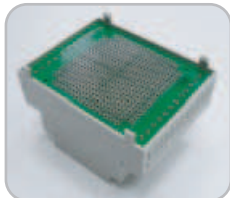
D1MG
with D1MG-PCB-A



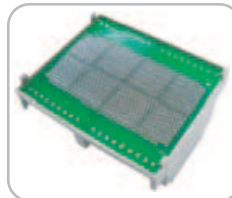
D2MG
with D2MG-PCB-A



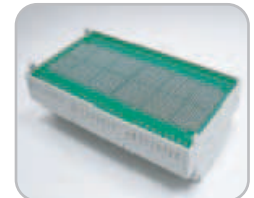
D3MG
with D3MG-PCB-A



D4MG
with D4MG-PCB-A

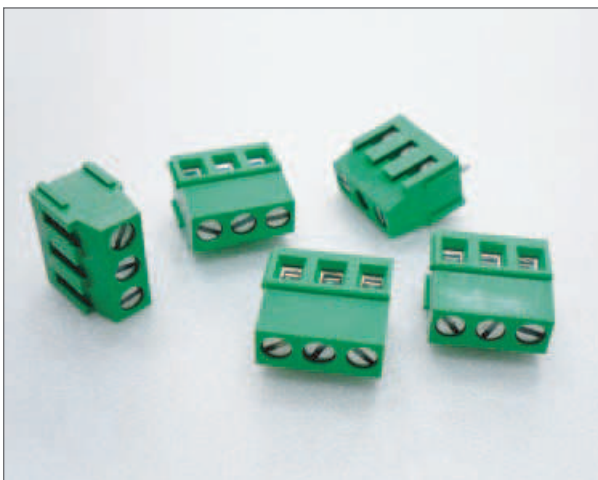


D6MG
with D6MG-PCB-A



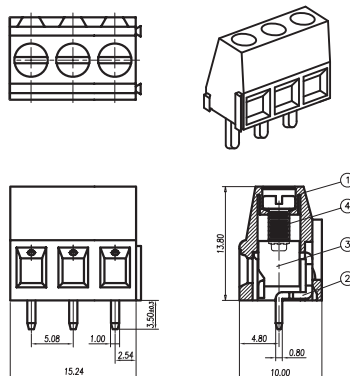
D9MG
with D9MG-PCB-A

3WAY of terminal block for DXMG use



ITEM No.	PRODUCT DESCRIPTION
DXMG-3WAY	3WAY of terminal block for D2MG/D3MG/D4MG/D6MG /D9MG use

DXMG-3WAY DRAWING:



NOTES:

1. Rating: 300V 20A (IEC 250V 24A)
PITCH: 5.08mm
2. Insulation Withstands Voltage:
AC 2000V at 1 minute
3. Insulation Resistance:
500M Ω or more at DC500V
4. Using Temperature Range:
-40°C~+105°C
5. Suitable Electric Wire:
24~12AWG(IEC 0.5~2.5mm²)
6. Torque Value: 4 kg-cm
7. RoHS compliance

Example:



D2MG with
3WAY of terminal block



D6MG with
3WAY of terminal block

X-ON Electronics

Largest Supplier of Electrical and Electronic Components

Click to view similar products for [Electrical Enclosures](#) category:

Click to view products by [Gainta](#) manufacturer:

Other Similar products are found below :

[120-902](#) [120-905](#) [120-403](#) [120-475](#) [120-901](#) [127-410](#) [130-504](#) [130-506](#) [MR-25L+](#) [30-8739](#) [PIP-11774SCREW](#) [30-9715](#) [MR-25LW+](#) [110-407](#) [111-004](#) [111-008](#) [110-402](#) [110-901](#) [110-907](#) [111-002](#) [110-406](#) [110-910](#) [110-404](#) [110-409](#) [110-410](#) [120-405](#) [106-009](#) [106-505](#) [105-401](#) [106-006](#) [104-406](#) [137-002](#) [105-405](#) [111-005](#) [127-909](#) [106-502](#) [130-475](#) [130-503](#) [127-401](#) [106-010](#) [127-455](#) [127-475](#) [110-903](#) [R260-180-300](#) [9511020](#) [9822029](#) [9820014](#) [P61603000P](#) [9823009](#) [R103-164-000](#)