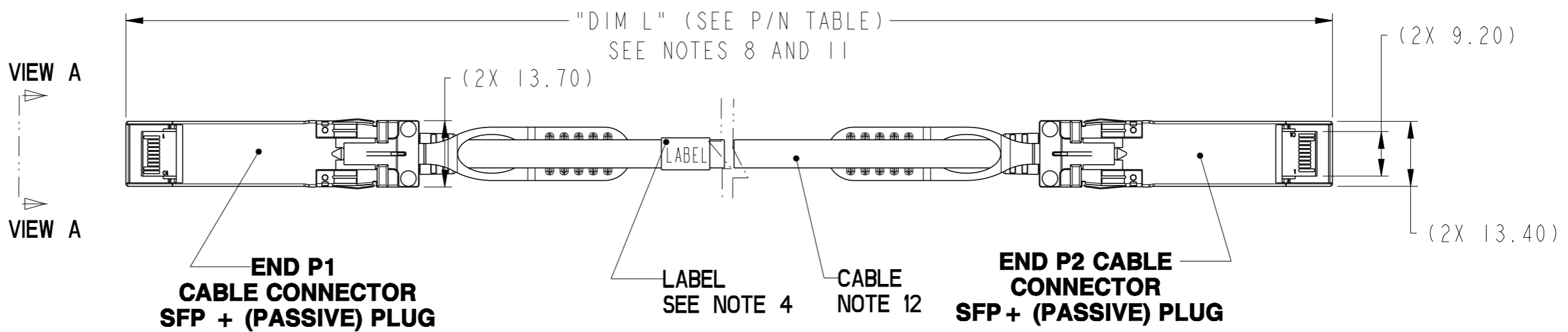
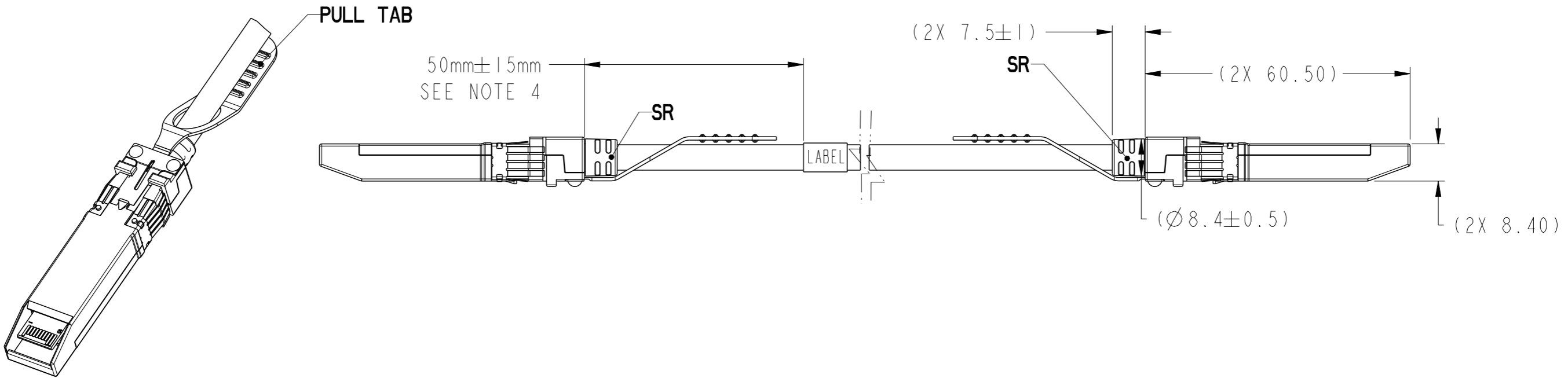


PRODUCT NUMBER	DESCRIPTION	NOTES
10127737-20XXLF	NON-HF 30AWG	SEE SHEET 2&3
10127737-40XXLF	NON-HF 26AWG	SEE SHEET 2&3



Amphenol  
FCi

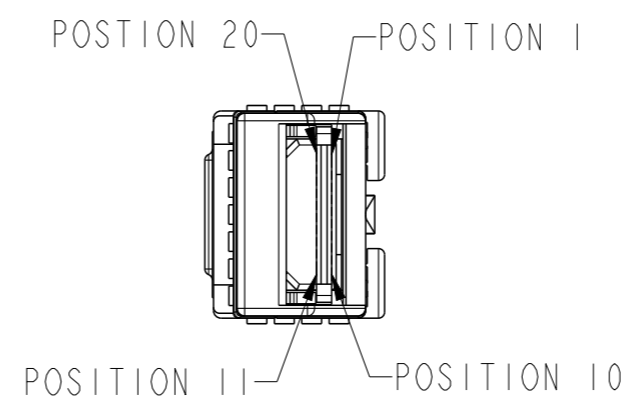
© 2016 AFCI

spec ref	dr	Michael Zhou	2013/10/22	projection	mm	size	A3	scale	3:10		
tolerance std	eng	Michael Zhou	2016/12/06			ecn no	ELX-N-25565-1				
TOLERANCES UNLESS OTHERWISE SPECIFIED		chr	-			product family	SFP+ PLUG	rel level	Released		
surface	linear	0.X	±0.3	<b>Amphenol FCi</b>	SFP+ CABLE ASSEMBLY	dwg no 10127737	rev B	angular 0° ±2°			
		0.XX	±0.10					www.fci.com	cat. no. -	Product - Customer Drw	sheet 1 of 3
		0.XXX	±0.050								

PRODUCT NUMBER	DESCRIPTION	NOTES
10127737-2003LF	NON-HF 30AWG	0.3M
10127737-2004LF	NON-HF 30AWG	0.4M
10127737-2005LF	NON-HF 30AWG	0.5M
10127737-2010LF	NON-HF 30AWG	1M
10127737-2015LF	NON-HF 30AWG	1.5M
10127737-2020LF	NON-HF 30AWG	2M
10127737-2025LF	NON-HF 30AWG	2.5M
10127737-2030LF	NON-HF 30AWG	3M
10127737-4005LF	NON-HF 26AWG	0.5M
10127737-4010LF	NON-HF 26AWG	1M
10127737-4015LF	NON-HF 26AWG	1.5M
10127737-4020LF	NON-HF 26AWG	2M
10127737-4025LF	NON-HF 26AWG	2.5M
10127737-4030LF	NON-HF 26AWG	3M
10127737-4035LF	NON-HF 26AWG	3.5M
10127737-4040LF	NON-HF 26AWG	4M
10127737-4045LF	NON-HF 26AWG	4.5M
10127737-4050LF	NON-HF 26AWG	5M



WIRING LIST (SEE NOTE 5)				
END P1			END P2	
POSITION	SYMBOL		POSITION	SYMBOL
12	RD-		19	TD-
13	RD+		18	TD+
18	TD+		13	RD+
19	TD-		12	RD-



**VIEW A (P1)**  
**SCALE 2:1**

LOW SPEED SIGNALS P1 & P2	
END P1	
POSITION	SYMBOL
1	VeeT
2	Tx_Fault
3	Tx_Disable
4	MOD_DEF(2)
5	MOD_DEF(1)
6	MOD_DEF(0)
7	RateSelect
8	LOS
9	VeeR
10	VeeR
11	VeeR
14	VeeR
15	VccR
16	VccT
17	VeeT
20	VeeT

PRODUCT CAPABILITY MATRIX					
INDUSTRY STANDARD	UNEQUALIZED CABLE LENGTH/AWG				
	1M	2M	3M	4M	5M
IEEE 802.3bj	30AWG	30AWG	30AWG	26AWG	26AWG

spec ref	dr	Michael Zhou	2013/10/22	projection	mm	size	A3	scale	3:10
tolerance std	eng	Michael Zhou	2016/12/06		← →	ecn no	ELX-N-25565-1	rel level	Released
TOLERANCES UNLESS OTHERWISE SPECIFIED									
surface		linear	0.X	±0.3	Amphenol FCI	SFP+ CABLE ASSEMBLY	rev	10127737	B
			0.XX	±0.10					
			0.XXX	±0.050					
	angular	0°	±2°	www.fci.com	cat. no.	-	Product - Customer Drw	sheet 2 of 3	

Amphenol FCI

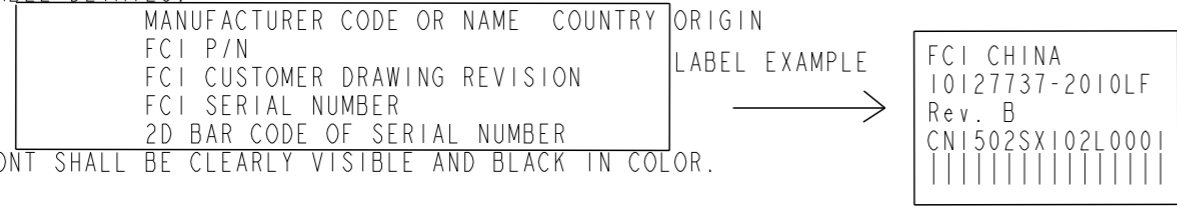
© 2016 AFCI

NOTES:

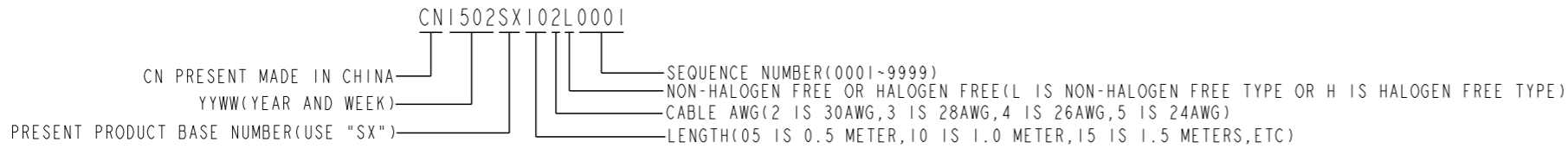
- 1 - MATERIAL:  
 BACKSHELLS: ZINC ALLOY/ COPPER UNDERPLATE/ NICKEL OVERPLATE  
 PULL TAB: THERMOPLASTIC POLYMER  
 RELEASE SPRING: STAINLESS STEEL  
 EMI GASKET: STAINLESS STEEL  
 SR: THERMOPLASTIC POLYAMIDES  
 SCREWS: STAINLESS STEEL  
 PADDLE CARD: PRINTED CIRCUIT SUBSTRATE
- 2 - THIS PRODUCT MEETS THE RESTRICTION OF HAZARDOUS SUBSTANCES IN ELECTRICAL AND ELECTRONIC EQUIPMENT (ROHS) DIRECTIVE (2011/65/EU)
- 3 - IMPEDANCE: 100 OHMS DIFFERENTIAL.

4 - UNLESS OTHERWISE SPECIFIED LABEL POSITION IS TO BE 50mm FROM REAR OF CONNECTOR.

LABEL DETAILS:



FCI SERIAL NUMBER IS ONLY USED FOR TRACKING PRODUCT,DETAIL IS AS BELOW :



- 5 - ALL CABLE ASSEMBLIES SHALL BE 100% TESTED FOR CONTINUITY AS DEFINED IN WIRING LIST.
- 6 - EEPROM INFORMATION REFERS TO FCI STANDRAD SFP+ PRODUCT SPECIFICATION:GS-12-616.
- 7 - PACKAGING OF LEAD FREE PRODUCTS MEETS LABELING AND PACKAGING PER SPECIFICATION GS-14-920. PACKAGE CABLE ASSEMBLIES PER GS-14-1272. DUST CAPS ARE TO BE ASSEMBLED PRIOR TO PACKING.
- 8 - THIS DIMENSION IS A FINISHED PRODUCT LENGTH.
- 9. A "△" SYMBOL WILL BE NEXT TO ANY DIMENSION, VIEW, OR NOTE WHICH HAS BEEN MODIFIED WITH THE CURRENT DRAWING REVISION. THE CURRENT REVISION WILL BE SHOWN IN THE SYMBOL.
- 10. LONGER LENGTH APPLICATIONS REQUIRE HOST SYSTEM PREMPHASIS AND/OR EQUALIZATION.
- 11. UNLESS OTHERWISE SPECIFIED ASSEMBLED LENGTH TOLERANCE IS TO BE:  
 <= 1 METER = ±25.0mm  
 > 1 METER TO 10 METERS = ±2% OF "DIM L"
- 12. "HF" PRODUCT NUMBERS DESIGNATE THE USE OF HALOGEN FREE RAW CABLE.
- 13. HALOGEN FREE RAW CABLE CAN BE USED AS A SUBSTITUTE ON NON-HF PRODUCT NUMBERS.
- 14. RAW CABLE IS OPTIONAL WHICH HAD BEEN QUALIFIED AND MEET FCI STANDARD PRODUCT SPECIFICATION.

Amphenol FCI

© 2016 AFCI

spec ref	dr	Michael Zhou	2013/10/22	projection	mm	size	A3	scale	3:10	
tolerance std	eng	Michael Zhou	2016/12/06			ecn no		ELX-N-25565-1		
TOLERANCES UNLESS OTHERWISE SPECIFIED  surface  linear	chr	-	-			product family		SFP+ PLUG		rel level
	appr	Wei-Zhong Hu	2016/12/06	SFP+ CABLE ASSEMBLY		10127737		rev		B
	angular	0°	±2°	www.fci.com	SFP+ (PASSIVE) ASSEMBLY 25Gbps/Channel		cat. no.		Product - Customer Drw	

## X-ON Electronics

Largest Supplier of Electrical and Electronic Components

*Click to view similar products for [Ethernet Cables / Networking Cables](#) category:*

*Click to view products by [Amphenol](#) manufacturer:*

Other Similar products are found below :

[0152660053](#) [603020002](#) [73-7797-25](#) [73-8890-10](#) [73-8890-14](#) [73-8891-14](#) [73-8891-25](#) [73-8892-50](#) [73-8894-10](#) [73-8894-3](#) [73-8895-14](#) [73-8896-7](#) [MCJB2-10P6Q7-120](#) [84909-0204](#) [9QA0-111-12-3.00](#) [1200650742](#) [1200700174](#) [1200860368](#) [1200650013](#) [1201080008](#) [1-21919-1](#) [1300500373](#) [1300101844](#) [1300101845](#) [130050-0004](#) [1300500014](#) [1410147](#) [E16A06002M030](#) [E200102-009-S1](#) [MT14-187L](#) [17-103530](#) [NK5EPC18RDY](#) [NK5EPC18VLY](#) [NK5EPC18YLY](#) [NK5EPC1GRY](#) [NK5EPC30BLY](#) [NK5EPC30VLY](#) [NK5EPC30YLY](#) [NK5EPC4Y](#) [NK5EPC6YLY](#) [NK5EPC8BLY](#) [NK5EPC9YLY](#) [NK6PC30BUY](#) [NK6PC30GRY](#) [NK6PC30RDY](#) [NK6PC30Y](#) [NK6PC30YLY](#) [1969343-6](#) [C501100010](#) [C501106002](#)