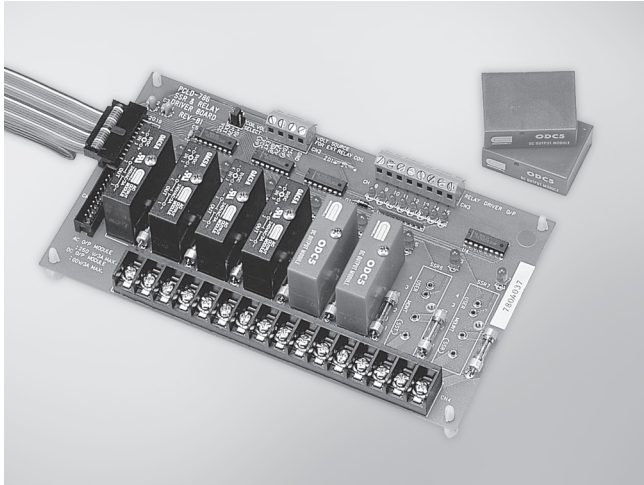


# PCLD-786

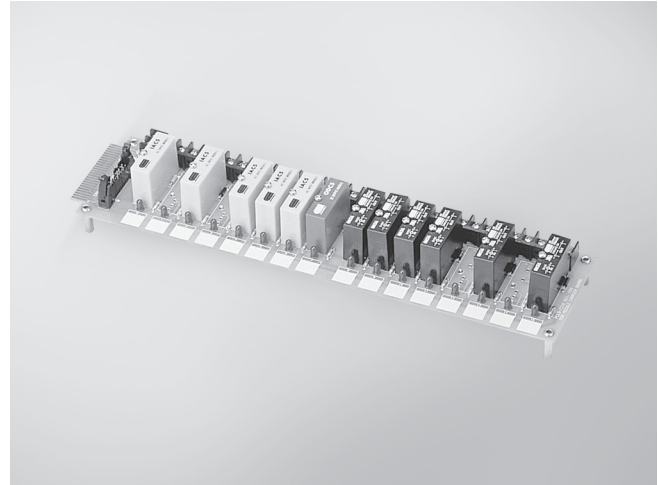
# PCLD-7216

8-ch SSR I/O Module Carrier Board

16-ch SSR I/O Module Carrier Board



PCL-10120-1 ▲ PCLD-786 ▲ PCLM-ODC5 ▲



PCLD-7216

## Features

- Up to eight AC or DC solid state relay modules
- Photo-coupler isolated operation
- Eight external relay drivers
- LED status indicators

## Specifications

### AC Solid State Relays

- 1 Cycle Surge** 40 A
- Blocking Voltage**  $\pm 600$  V min.
- Off Leakage Current** 8 mA max.
- On-state Voltage** 1.6 V max.
- Output Rating** 24 ~ 280 V<sub>AC</sub> @ 3.0 A
- Turn On** zero volts
- Turn On/Turn Off Time** < 1/2 cycle
- Type** PCLM-OAC5A

### DC Solid State Relays

- 1 Second Surge** 5 A
- OFF Leakage Current** 1 mA max.
- ON-state Voltage** 1.4 V max.
- Output Rating** 5 ~ 60 V<sub>DC</sub> @ 3.0 A
- Turn On/Turn Off Time** 750  $\mu$ s max.
- Type** PCLM-ODC5

### External Relay Drivers

- Channels** 8
- Coil Driving Voltage** 5 V, 12 V from PC or external source
- Driver Type** ULN2003, open collector type
- Max. Driving Current** 125 mA each channel

### General

- Dimensions (L x W)** 205 x 114 mm (8.1" x 4.5")

## Ordering Information

- PCLD-786** 8-ch SSR I/O Module Board w/ 20-pin Flat Cable

**Note:** PCLD-786 does not include SSRs. They must be ordered by selecting single piece SSR modules according to your requirements.

- PCLM-OAC5A** Single Piece AC SSR Module (280 V<sub>AC</sub>, 3 A)
- PCLM-ODC5** Single Piece DC SSR Module (60 V<sub>DC</sub>, 3 A)

## Features

- Channel status reflected by onboard LED for easy monitoring
- Onboard fuse protection

## Specifications

Module Type		Field Side		Logic Side
Output Modules	Part No.	Output Voltage Rating	Output Current Rating	Input Logic and SSR Status
AC Output	PCLM-OAC5A	24 ~ 280 V <sub>AC</sub>	3.0 A	TTL low (On)
		12 ~ 280 V <sub>AC</sub>		TTL high (Off)
DC Output	PCLM-ODC5	5 ~ 60 V <sub>AC</sub>	3.0 A	TTL low (On)
Input Modules	Part No.	Input On Voltage	Input Off Voltage	Output Logic and On/Off Status
AC Input	PCLM-IAC5A	180 ~ 280 V <sub>AC</sub>	< 80 V	TTL low (On)
DC Input	PCLM-IDC5B	3 ~ 32 V <sub>AC</sub>	< 1 V	TTL low (On)

### Input Modules

#### Field Side:

- Input On/Off Voltage Range** PCLM-IAC5: 90 ~ 140 V/45 V<sub>RMS</sub>  
PCLM-IAC5A: 180 ~ 280 V/80 V<sub>RMS</sub>  
PCLM-IDC5B: 3 ~ 32 V/1 V<sub>DC</sub>
- Input Resistance** PCLM-IAC5: 14 k $\Omega$ , PCLM-IAC5A: 44 k $\Omega$ ,  
PCLM-IDC5B: 1.5 k $\Omega$
- Turn On/Off Time** PCLM-IAC5: 20 msec. max., PCLM-IAC5A: 20 msec. max.  
PCLM-IDC5B: 100 msec. max.

#### Logic Side:

- Breakdown Voltage** 30 V<sub>DC</sub>
- Output Current** 100 mA max.
- Output Voltage Drop** 0.4 V max.
- Supply Current** 12 mA max.
- Supply Voltage** 4 ~ 6 V

### Output Modules

#### Field Side:

- Current Rating** 3 A max. (@ 25°C)
- Contact Voltage Drop** 1.6 V max.
- Turn On/Off Time** PCLM-OAC series: 1/2 AC cycle max.  
PCLM-ODC series: 100  $\mu$ sec/750  $\mu$ sec. max.

#### Logic Side:

- Input Resistance** 220  $\Omega$
- Supply Voltage** 4 ~ 6 V
- Supply Current** 12 mA max.

### General

- Logic Side Connectors** 50-pin edge connector, Opto-22 compatible
- Dimensions (L x W x H)** 367 x 111 x 56 mm (14.4" x 4.4" x 2.2")

## Ordering Information

- PCLD-7216** 16-ch SSR I/O Module Carrier Board

**Note:** PCLD-7216 does not include SSRs. They must be ordered by selecting single piece SSR modules according to your requirements.

## X-ON Electronics

Largest Supplier of Electrical and Electronic Components

*Click to view similar products for [I/O Modules](#) category:*

*Click to view products by [Advantech](#) manufacturer:*

Other Similar products are found below :

[70L-IDC5S](#) [70L-OAC-L](#) [70Z3289-4](#) [G21960000700](#) [G21960002700](#) [G34960002700](#) [G88104401](#) [GUR02](#) [OACU](#) [C4SWOUT](#) [PB16H](#) [SM-IDC15](#) [G34960001700](#) [G77-S](#) [G78-16-E](#) [GP34829091724](#) [GP34960005700](#) [JQP4](#) [ODC-24A](#) [IDC5P](#) [FC6A-N16B1](#) [6421](#) [FC6A-N32B3](#) [70MRCQ32-HL](#) [C200H-LK201-V1](#) [G3TA-OA202SZ-US](#) [DC12](#) [GT1-OD16](#) [GT1-AD04CST](#) [GT1-DA04](#) [B7AM-6BS](#) [GRT1-ML2](#) [GRT1-TS2P](#) [CRT1-ID16TAH-1](#) [70GRCQ24-HS](#) [CRT1-ID08](#) [G7TC-ID16 DC24V](#) [CRT1-ID08-1](#) [84110210](#) [6422](#) [AIIS-DIO32-00A1E](#) [84110410](#) [GT1-OD16MX](#) [GRT1-PC8](#) [G7VC-OC16-B7](#) [G7TC-OC08-1 DC24V](#) [G7TC-IA16 AC200/220V](#) [G7TC-OC08 DC24V](#) [70MRCK24-DIN](#) [2736505](#) [ODC5AQ](#)