

ADAM-5013 ADAM-5017 ADAM-5017H

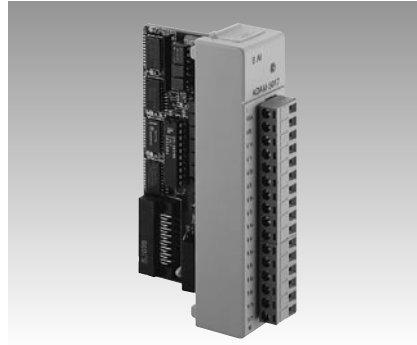
3-channel RTD Input Module

8-channel Analog Input Module

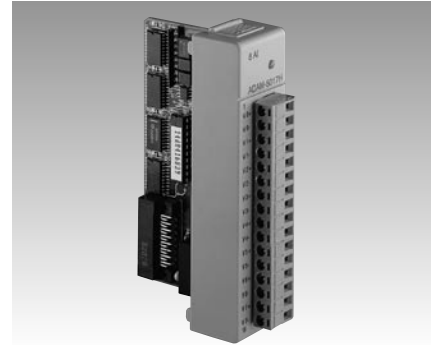
8-channel High-Speed Analog Input Module



ADAM-5013



ADAM-5017



ADAM-5017H



Specifications

- **Channels** 3
- **Effective Resolution** 16-bit
- **Input Type** PT100 or Ni RTD
- **RTD Types and Temperature Ranges**
 - IEC RTD 100 ohms**
 - Pt -100° C to +100° C $a=0.00385$
 - Pt 0° C to +100° C $a=0.00385$
 - Pt 0° C to +200° C $a=0.00385$
 - Pt 0° C to +600° C $a=0.00385$
 - JIS RTD 100 ohms**
 - Pt -100° C to +100° C $a=0.00392$
 - Pt 0° C to +100° C $a=0.00392$
 - Pt 0° C to +200° C $a=0.00392$
 - Pt 0° C to +600° C $a=0.00392$
 - Ni RTD**
 - Ni -80° C to +100° C
 - Ni 0° C to +100° C
- **Isolation Voltage** 3000 V_{DC}
- **Sampling Rate** 10 samples/sec. (total)
- **Input Impedance** 2 M Ω
- **Bandwidth** 13.1 Hz @ 50 Hz, 15.72 Hz @ 60 Hz
- **Input Connections** 2, 3 or 4 wire
- **Accuracy** $\pm 0.1\%$ or better
- **Zero Drift** $\pm 0.015^\circ \text{C}/^\circ \text{C}$
- **Span Drift** $\pm 0.01^\circ \text{C}/^\circ \text{C}$
- **CMR @ 50/60 Hz** 150 dB
- **NMR @ 50/60 Hz** 100 dB
- **Power Consumption** 0.85 W (typical); 1.1 W (max.)

Ordering Information

- **ADAM-5013-A1** 3-channel RTD Input Module

Specifications

- **Channels** 8 differential
- **Effective Resolution** 16-bit
- **Input Type** mV, V, mA
- **Input Range** $\pm 150 \text{ mV}$, $\pm 500 \text{ mV}$, $\pm 1 \text{ V}$, $\pm 5 \text{ V}$, $\pm 10 \text{ V}$; $\pm 20 \text{ mA}$
- **Isolation Voltage** 3000 V_{DC}
- **Fault and Overvoltage Protection** Withstands overvoltage up to $\pm 35 \text{ V}$
- **Sampling Rate** 10 samples/sec. (total)
- **Input Impedance** 2 M Ω
- **Bandwidth** 13.1 Hz @ 50 Hz, 15.72 Hz @ 60 Hz
- **Accuracy** $\pm 0.1\%$ or better
- **Zero Drift** $\pm 1.5 \text{ mV}/^\circ \text{C}$
- **Span Drift** $\pm 25 \text{ PPM}/^\circ \text{C}$
- **CMR @ 50/60 Hz** 92 dB min.
- **Power Consumption** 1 W (typical); 1.25 W (max.)
- **Analog Signal Range** $\pm 15 \text{ V max.}$

Note: The voltage difference between any two pins must not exceed $\pm 15 \text{ V}$

Ordering Information

- **ADAM-5017** 8-channel Analog Input Module - mV, V, mA

Specifications

- **Channels** 8 differential
- **Effective Resolution** 12-bit plus sign bit
- **Input Type** mV, V, mA
- **Input Range** $\pm 250 \text{ mV}$, $\pm 500 \text{ mV}$, $\pm 1 \text{ V}$, $\pm 5 \text{ V}$, $\pm 10 \text{ V}$, 0 ~ +500 mV, 0 ~ +1 V, 0 ~ +5 V, 0 ~ +10 V, 0 ~ 20 mA, 4 ~ 20 mA
- **Isolation Voltage** 3000 V_{DC}
- **Sampling Rate** Depends on base unit
ADAM-5000/485 & 5000E: 100 samples/sec
ADAM-5510: 8000 samples/sec max.: one ADAM-5017H installed
ADAM-5510KW: Up to 100 samples/sec
ADAM-5511: Up to 100 samples/sec
ADAM-5000/TCP: 1000 samples/sec max.: depending on the performance of client server or controller
- **Input Impedance** 20 M Ω (voltage inputs)
125 Ω (current inputs)
- **Bandwidth** 1 kHz
- **Signal Input Bandwidth** 1 kHz for both voltage and current inputs
- **Accuracy** $\pm 0.1\%$ or better
- **CMR @ 50/60 Hz** 92 dB min
- **Power Consumption** 1.75 W (typical); 2.2 W (max)
- **Distinct Range Settings Allowed on Each Channel**

Note: The voltage difference between any two pins must not exceed $\pm 15 \text{ V}$

Ordering Information

- **ADAM-5017H** 8-channel High-Speed Analog Input Module - mV, V, mA

X-ON Electronics

Largest Supplier of Electrical and Electronic Components

Click to view similar products for [I/O Modules](#) category:

Click to view products by [Advantech](#) manufacturer:

Other Similar products are found below :

[70L-IDC5S](#) [70L-OAC-L](#) [70Z3289-4](#) [G21960000700](#) [G21960002700](#) [G34960002700](#) [G88104401](#) [GUR02](#) [OACU](#) [C4SWOUT](#) [PB16H](#) [SM-IDC15](#) [G34960001700](#) [G77-S](#) [G78-16-E](#) [GP34829091724](#) [GP34960005700](#) [JQP4](#) [ODC-24A](#) [IDC5P](#) [FC6A-N16B1](#) [6421](#) [FC6A-N32B3](#) [70MRCQ32-HL](#) [C200H-LK201-V1](#) [G3TA-OA202SZ-US](#) [DC12](#) [GT1-OD16](#) [GT1-AD04CST](#) [GT1-DA04](#) [B7AM-6BS](#) [GRT1-ML2](#) [GRT1-TS2P](#) [CRT1-ID16TAH-1](#) [70GRCQ24-HS](#) [CRT1-ID08](#) [G7TC-ID16](#) [DC24V](#) [CRT1-ID08-1](#) [84110210](#) [6422](#) [AIIS-DIO32-00A1E](#) [84110410](#) [GT1-OD16MX](#) [GRT1-PC8](#) [G7VC-OC16-B7](#) [G7TC-OC08-1](#) [DC24V](#) [G7TC-IA16](#) [AC200/220V](#) [G7TC-OC08](#) [DC24V](#) [70MRCK24-DIN](#) [2736505](#) [ODC5AQ](#)