



DUAL LTE / DUAL  
WI-FI MOBILE  
ACCESS ROUTER



# DIGI TRANSPORT® WR64

High performance cellular router with dual redundant communications for complex transit and transportation systems.

Ideal for challenging transportation and mobile environments, Digi TransPort® WR64 is a dual cellular LTE-Advanced router with true enterprise class routing, security, firewall and integrated VPN. It offers a flexible interface design with an integrated Wi-Fi access point, USB, serial and 4-port Ethernet switch, as well as a variety of configuration options including GNSS and Bluetooth.

Internet access for riders is managed securely and without impact to onboard bus systems. Triple carrier aggregation on each cellular interface can be combined to deliver up to 1.2 Gbps to passengers. Onboard systems retain priority and any remaining bandwidth is made available to Internet traffic.

A captive portal and splash page enable term acceptance, targeted messaging and agency branding. Standard HTTP/DNS redirect can be used to block malware and unwanted content through popular 3rd party service providers or an agency server.

Reliable powering circuitry supporting 9-36VDC input with ignition sense for direct integration into vehicles power source. Dual cellular and Wi-Fi modules provide true segmented traffic flow of private and public data for fare collection, CAD/AVL data, camera log backhaul and passenger Wi-Fi access.

## FEATURES AND BENEFITS

- Segmented private vs. public data communication across dual 600 Mbps CAT 11 cellular modules
- Video and vehicle data offload over 1.7 Gbps 802.11ac Wi-Fi backhaul
- Passenger Wi-Fi over 867 Mbps 802.11ac access point
- Wired Gigabit Ethernet (4-port) for onboard systems
- Future-built with powerful quad-core 1.91GHz, 64-bit CPU
- Manage and control devices with Digi Remote Manager®, a web-based management tool for all Digi cellular routers and gateways
- Cryptographic Co-processor with Secure Key Generation and Storage

## RELATED PRODUCTS



Digi TransPort® WR44 R



Digi TransPort® WR44 RR

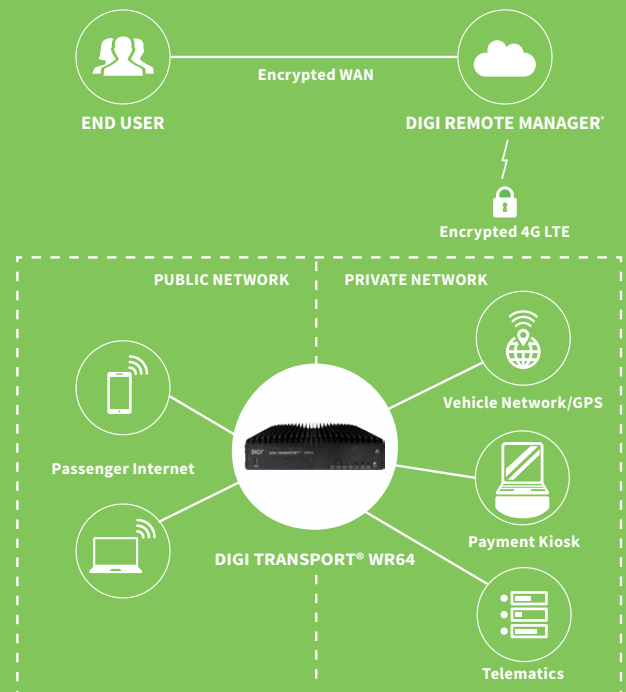


Accessories



Digi Remote Manager®

## APPLICATION EXAMPLE



## SPECIFICATIONS

## DIGI TRANSPORT® WR64

## WIRELESS INTERFACES

## WWAN\*

|   |  |
|---|--|
| <b>DUAL MODULES<br/>GLOBAL LTE-ADVANCED</b> | LTE FDD : 700(B12,B13,B17, B28, B29) / 800(B20) / 850(B5, B26) / 900(B8) / 1700AWS(B4, B66) / 1800(B3) / 1900(B2, B25) / 2100(B1) / 2300(B30) / 2600(B7)<br>LTE TDD : 2300(B40) / 2500(B41) / 2600(B38)<br>3G (HSPA): 850(B5), 900(B8), 1700AWS(B4), 1800(B3), 1900(B2), 2100(B1)<br>Transfer rate (max): 600 Mbps down, 75 Mbps up per module |
|---|--|

|                  |  |
|------------------|--|
| <b>CONNECTOR</b> | 2 x 50 Ω SMA per module (Center pin: female) |
|------------------|--|

|                  |  |
|------------------|--|
| <b>SIM SLOTS</b> | 2, Mini-SIM (2FF) per module (4 total) |
|------------------|--|

|                     |                               |
|---------------------|-------------------------------|
| <b>SIM SECURITY</b> | SIM slot cover plate included |
|---------------------|-------------------------------|

## WI-FI

|                     |  |
|---------------------|--|
| <b>DUAL MODULES</b> | Private Backhaul: 4 x 4 MU-MIMO 5 GHz 802.11 a/n/ac Wave 2, 1.733 Gbps (max)<br>Public Wi-Fi: 2 x 2 MIMO 2.4/5 GHz 802.11 a/b/g/n/ac, 867 Mbps (max) |
|---------------------|--|

|                |  |
|----------------|--|
| <b>HOTSPOT</b> | Captive portal, customizable splash page |
|----------------|--|

|                       |   |
|-----------------------|---|
| <b>AUTHENTICATION</b> | Basic ToS acceptance, Enterprise RADIUS |
|-----------------------|---|

|                           |   |
|---------------------------|---|
| <b>3RD PARTY SERVICES</b> | Content filtering, embedded advertising |
|---------------------------|---|

|                        |                                      |
|------------------------|--------------------------------------|
| <b>USER MANAGEMENT</b> | Per client usage limit and reporting |
|------------------------|--------------------------------------|

|              |   |
|--------------|---|
| <b>MODES</b> | Up to 4 Access Points and 1 Client per Wi-Fi module (8+2 total) |
|--------------|---|

|                 |  |
|-----------------|--|
| <b>SECURITY</b> | None, WPA/WPA2-Personal, WPA/WPA2-Enterprise |
|-----------------|--|

|                   |  |
|-------------------|--|
| <b>CONNECTORS</b> | Private Backhaul: 4 x 50 Ω RP-SMA (Center pin: male)<br>Public Wi-Fi: 2 x 50 Ω RP-SMA (Center pin: male) |
|-------------------|--|

## GPS

|                   |   |
|-------------------|---|
| <b>TECHNOLOGY</b> | Multi-constellation: Concurrent reception of up to 2 GNSS (GPS, Galileo, GLONASS, BeiDou) |
|-------------------|---|

|                    |         |
|--------------------|---------|
| <b>SENSITIVITY</b> | -163 dB |
|--------------------|---------|

|                 |                                |
|-----------------|--------------------------------|
| <b>PROTOCOL</b> | NMEA 0183 V2.3 sentence output |
|-----------------|--------------------------------|

|                  |   |
|------------------|---|
| <b>CONNECTOR</b> | 1 x 50 Ω SMA (Center pin: female); +3.3VDC active antenna drive |
|------------------|---|

## WIRED INTERFACES

## SERIAL

|                          |                     |
|--------------------------|---------------------|
| <b>PORTS / CONNECTOR</b> | 1 RS-232; DB-9 male |
|--------------------------|---------------------|

## ETHERNET

|                          |          |
|--------------------------|----------|
| <b>PORTS / CONNECTOR</b> | 4; RJ-45 |
|--------------------------|----------|

|                 |                                |
|-----------------|--------------------------------|
| <b>STANDARD</b> | IEEE 802.3; 10/100/1000 Base-T |
|-----------------|--------------------------------|

## USB

|              |   |
|--------------|---|
| <b>PORTS</b> | 3 |
|--------------|---|

|                 |                  |
|-----------------|------------------|
| <b>STANDARD</b> | USB 3.0 , Type A |
|-----------------|------------------|

## SOFTWARE

|                  |  |
|------------------|--|
| <b>PROTOCOLS</b> | IPv4/IPv6, DMNR, QoS, NTP, Dynamic DNS, Syslog |
|------------------|--|

|                 |  |
|-----------------|--|
| <b>SECURITY</b> | Stateful firewall, IPsec VPN, PKI, RADIUS, Mobile IKE, SHA-2 |
|-----------------|--|

|                          |   |
|--------------------------|---|
| <b>REMOTE MANAGEMENT</b> | Digi Remote Manager® (cloud based); SNMP v1/v2c/v3 (user installed/managed) |
|--------------------------|---|

|                         |   |
|-------------------------|---|
| <b>LOCAL MANAGEMENT</b> | Web Interface (HTTPS); CLI (SSH, Serial port) |
|-------------------------|---|

|  |   |
|--|---|
| <b>MANAGEMENT/<br/>TROUBLESHOOTING</b> | Protocol Analyzer with PCAP for Wireshark, Event and System Logging (with Syslog), accessible from Digi Remote Manager, SFTP or SCP |
|--|---|

|  |             |
|--|-------------|
| <b>PROGRAMMING TOOLS/<br/>ENVIRONMENTS</b> | Python v3.6 |
|--|-------------|

|               |                                 |
|---------------|---------------------------------|
| <b>MEMORY</b> | 2GB RAM, 8GB Flash (CFAST card) |
|---------------|---------------------------------|

## POWER

|              |  |
|--------------|--|
| <b>INPUT</b> | 9-36VDC, 12/24 VDCV vehicle rated, cold-crank down to 6VDC |
|--------------|--|

|                         |   |
|-------------------------|---|
| <b>DELAYED SHUTDOWN</b> | Configurable power down following ignition off indication |
|-------------------------|---|

## ENVIRONMENTAL

|                 |   |
|-----------------|---|
| <b>PHYSICAL</b> | 10.2 in x 7.8 in x 2.6 in (260 mm x 196 mm x 67 mm) |
|-----------------|---|

|                    |  |
|--------------------|--|
| <b>STATUS LEDS</b> | Power, WWAN (signal, service) per module, Wi-Fi Service (per module), GNSS Service, LAN (link, activity) |
|--------------------|--|

|                       |                |
|-----------------------|----------------|
| <b>ENCLOSURE IP40</b> | Aluminum alloy |
|-----------------------|----------------|

|                 |                           |
|-----------------|---------------------------|
| <b>MOUNTING</b> | Flexible mounting options |
|-----------------|---------------------------|

\*Transfer rates are network operator dependent

## SPECIFICATIONS

## DIGI TRANSPORT® WR64

### ENVIRONMENTAL

|                       |                                    |
|-----------------------|------------------------------------|
| OPERATING TEMPERATURE | -30° C to +70° C                   |
| STORAGE TEMPERATURE   | -40° C to +85° C                   |
| RELATIVE HUMIDITY     | 0% to 95% (non-condensing) @ 25° C |

### APPROVALS

|                    |  |
|--------------------|--|
| CELLULAR           | PTCRB, NAPRD.03, GCF-CC, R&TTE, EN 301 511   |
| SAFETY             | UL 60950/EN62368, CSA 22.2 No. 60950   |
| EMISSIONS/IMMUNITY | CE, FCC Part 15 Class B, EN55024, EN55022 Class B  |
| INDUSTRY           | MIL-STD 810G (temperature, humidity, vibration, shock, dust)<br>Vehicle-grade certifications: E-Mark (E13), SAE J1113-2 / J1455, ISO 7637-2/3, ISO 10605 |

### WARRANTY

|                  |         |
|------------------|---------|
| PRODUCT WARRANTY | 3 years |
|------------------|---------|

## PRODUCT IMAGES

### FRONT



### BACK

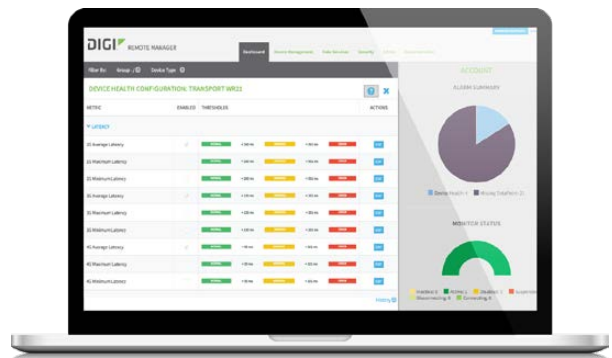


## DIGI REMOTE MANAGER®

### Manage and control devices from a central, secure platform.

When it comes to the Internet of Things, only the most reliable communication connections will do. With Digi Remote Manager, you can visually monitor, update and maintain the performance requirements you depend on most, with reports on the following key parameters:

- Cellular connection history
- 3G/4G LTE signal quality
- Public Wi-Fi client usage statistics
- Packet delivery
- Latency
- Cellular data sent and received
- CPU and memory utilization
- Network interface throughput
- Level 1 PCI-DSS validation
- Open APIs available to support application development



### SECURITY

- Certified SSAE-16 facilities
- Over 175 security controls in place to protect data
- Security framework compliance with PCI, HIPAA, NIST and others
- Earned SkyHigh's Cloud Trust Program highest ranking of Enterprise-ready
- PCI certified; Attestation of Compliance

| PART NUMBERS | DESCRIPTION   |
|--------------|---|
| WR64-A121    | Digi TransPort WR64 - dual LTE, dual Wi-Fi, worldwide |

| PART NUMBERS | ACCESSORIES*                                    |
|--------------|---|
| 76002076     | AC Power Supply - 12VDC - 3-pin Power Connector |
| 76002069     | Accessory Kit - TransPort WR64                  |
| 76000826     | Cable - Ethernet, RJ45 to RJ45, 2m              |

\*Sold separately, unless otherwise noted.

FOR MORE INFORMATION  
PLEASE VISIT [WWW.DIGI.COM](http://WWW.DIGI.COM)

**DIGI SERVICE AND SUPPORT** / You can purchase with confidence knowing that Digi is always available to serve you with expert technical support and our industry leading warranty. For detailed information visit [www.digi.com/support](http://www.digi.com/support).

© 1996-2018 Digi International Inc. All rights reserved.  
All trademarks are the property of their respective owners.

91004152  
A6/918

**DIGI INTERNATIONAL WORLDWIDE HQ**  
877-912-3444 / 952-912-3444 / [www.digi.com](http://www.digi.com)

**DIGI INTERNATIONAL GERMANY**  
+49-89-540-428-0

**DIGI INTERNATIONAL JAPAN**  
+81-3-5428-0261 / [www.digi-intl.co.jp](http://www.digi-intl.co.jp)

**DIGI INTERNATIONAL SINGAPORE**  
+65-6213-5380

**DIGI INTERNATIONAL CHINA**  
+86-21-50492199 / [www.digi.com.cn](http://www.digi.com.cn)



## X-ON Electronics

Largest Supplier of Electrical and Electronic Components

*Click to view similar products for [Wall Mount AC Adapters](#) category:*

*Click to view products by [Digi International](#) manufacturer:*

Other Similar products are found below :

[76000738](#) [76000756-B10](#) [ADP-163 E](#) [ADP-159 A](#) [PSAC05A-050L6](#) [RLMDT361800](#) [TE30A1803F01](#) [0650-00005](#) [P25A14E-R1C](#) [SWI24-12-N-P6R](#) [TRH25033-A-02E01-Level-VI](#) [DA5-050US-B](#) [DA5-050UK-B](#) [RLMDT701800](#) [76000756](#) [DA5-050EU-B](#) [WSU120-2000-R13](#) [5V1A-USB](#) [AC-DC ADAPTER 160W](#) [WSU120-2000-13](#) [WSU150-0800-13](#) [76000980](#) [WSU075-3200-13](#) [WSU090-2500-13](#) [WSU050-2000-R13](#) [WSU240-1000-13](#) [WSU090-3500-R13](#) [WSU075-1500-13](#) [WSU135-1330-13](#) [WSU045-1500-13](#) [WSU090-2500-R13](#) [WSU240-1500-13](#) [WSU180-0660-13](#) [WSU075-1500-R13](#) [WSU090-1300-13](#) [WSU180-1330-R13](#) [NTPS-24-TT-700](#) [BB-SMI1812VP230C1](#) [WSU150-1600-13](#) [WSU050-1500-13](#) [WSU090-0800-13](#) [WSU180-0450-13](#) [WSU150-0560-R13](#) [WSU135-0880-13](#) [WSU120-3000-13](#) [WSU120-1000-R13](#) [WSU090-1300-R13](#) [WSU060-4000-13](#) [WSU060-1250-13](#) [WSU050-4000-13](#)