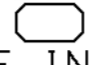
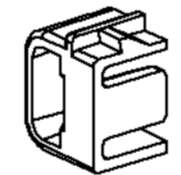
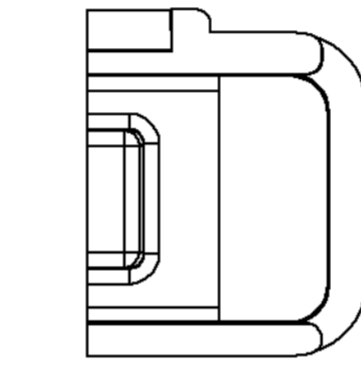
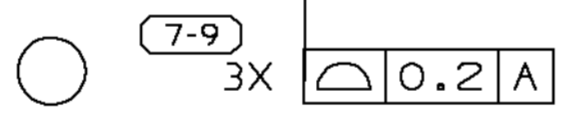
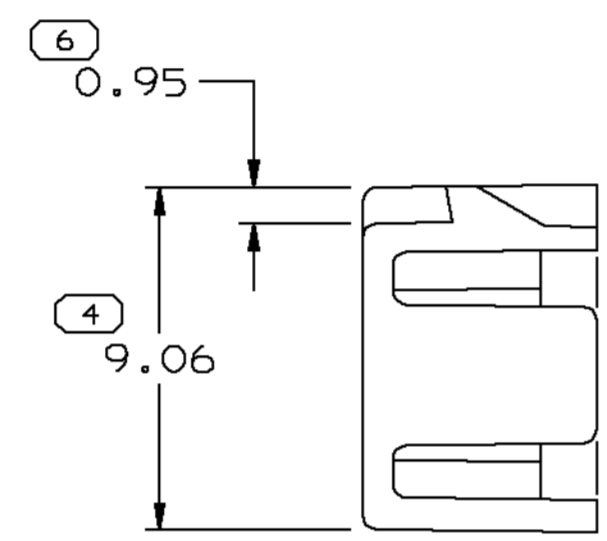
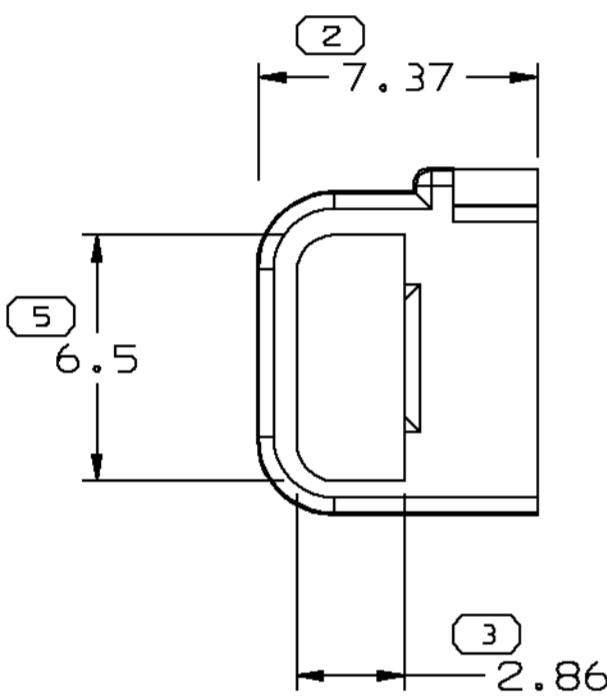
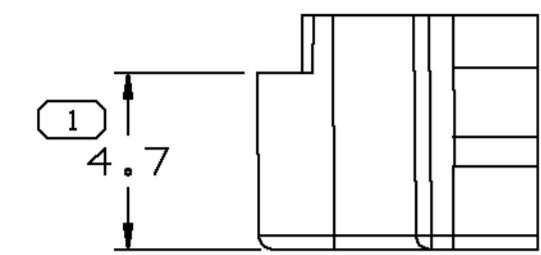


SYMBOL DEFINITION		MISSING NUMBERS	
A DIMENSION WITHOUT AN INSPECTION REPORT SYMBOL  DOES NOT REQUIRE INSPECTION. IT MAY BE CONTROLLED ON AN INDIVIDUAL COMPONENT DRAWING.	TOTAL NO. OF SYMBOLS ON DRAWING 7		
	LAST NO. USED 9		

DWG STATUS						ZONE	REVISION HISTORY	AUTH	DR	CK	APVD
DATE	STG	REV	CHG	N/P							
21MR00	R	001	-	-			WAS PE070982 AND RELEASED	000005	DME	DME	KL
11SE00	R	001	-	AA			REVISED DIMENSIONS	203023	END	END	KL
13N000	R	001	-	AB			CHANGE TOL. TO +0.15/-0.35 ON DIM 1.5	204435	SHH	END	KL
12JY01	R	001	-	AC			CHANGED PROCESS SENSITIVE DIMENSION FROM DIM #2 TO DIM #7-9	211915	JMR	JMR	SMM
19JL01	R	001	A	AD			CHANGED PROCESS SENSITIVE DIMENSION FROM DIM #7-9 TO DIM #7	212104	PG	PG	TPM
31JL01	R	001	-	AE			REVISED DIMS; ADDED GEO TOL SYMBOLS	212104	JS	JS	SMM



DELPHI
Automotive Systems

MATERIAL SPEC
R0100116 PBT GF30 - BLU

SUBSTANCES OF CONCERN AND RECYCLED CONTENT PER DELPHI-A 10949001

PART DRAWING

CODE NUMBER 6901	DWG DATE 21MR00	SCALE 5:1	DISTR CODE D
QC SPEC	STYLE	VOLUME cm ³ 0.158	

PART GEOMETRY
3D SOLID

UNLESS OTHERWISE SPECIFIED:
THIS DOCUMENT IS IN ACCORDANCE WITH ASME Y14.5M - 1994 AS AMENDED BY THE GM GLOBAL DIMENSIONING AND TOLERANCING ADDENDUM - 1997. ALL GEOMETRIC TOLERANCES AND RELATED DATUMS APPLY RFS. RULE #1 (PERFECT FORM AT MMC) DOES NOT APPLY WHEN RELATIONSHIP BETWEEN FEATURES IS ESTABLISHED BY ORIENTATION OR LOCATION TOLERANCES. SEPARATE POSITION CALLOUTS MAY BE GAGED SEPARATELY REGARDLESS OF DATUM REFERENCES.

UG
CHANGE RESTRICTED
NO MANUAL CHANGES

COPY OF MATH DATA DO NOT SCALE	REFERENCE	DR D. HEBERLEIN	DATE 24FE98
		APVD1 DENNIS ELLWOOD	21MR00
		APVD2 DENNIS ELLWOOD	21MR00
		APVD3 KEN LISOWSKI	22MR00
		APVD4	
	APVD5		

METRIC
UNLESS OTHERWISE SPECIFIED, ALL DIMENSIONS ARE IN MILLIMETERS

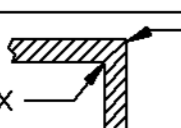
THIRD ANGLE PROJECTION

DRAWING NAME
CONN PLR 1F 280 GT

SHEET NUMBER 1 OF 1	DRAWING NUMBER 15357144	DWG STATUS STG REV N/P R 001 AE	SIZE A2
------------------------	----------------------------	---------------------------------------	------------

NOTES

- UNLESS OTHERWISE SPECIFIED AND/OR INDICATED: DIMENSIONS ARE TO FACE OF VIEW SHOWN AND AUTOMATICALLY ROUNDED BY COMPUTER FOR INSPECTION. (SEE MATH MODEL FOR PRECISE DIMENSIONS.) FOR ALL OTHER DIMENSIONS NOT SHOWN BUT REQUIRED FOR TOOL BUILD, SEE MATH MODEL FOR PRECISE TOOL PATH DATA.
- MATING COMPONENTS OR EQUIVALENT:
CONNECTOR HOUSING 15357133

 R 0.2 MAX SHARP CORNER TOLERANCE	DIMENSIONAL RANGE (MM) CHART E1										
	FROM TO	0 20	> 20 30	> 30 70	> 70 100	> 100 150	> 150 200	> 200 250	> 250 300	> 300 400	
	TOLERANCE UNLESS OTHERWISE SPECIFIED										
		±0.15	±0.2	±0.3	±0.4	±0.5	±0.6	±0.8	±1	±1.2	
	ANGULAR TOLERANCE ± 2°										

X-ON Electronics

Largest Supplier of Electrical and Electronic Components

Click to view similar products for [Automotive Connectors](#) category:

Click to view products by [Delphi](#) manufacturer:

Other Similar products are found below :

[003-018-000](#) [600858](#) [60403001](#) [60993906-B](#) [60993913-B](#) [629515004020001](#) [M902-2131](#) [M902-2161](#) [M902-2344](#) [72.330.1035.1](#)
[73.353.4028.0](#) [F118010](#) [F119300-B](#) [F132210](#) [F132210-B](#) [F166900](#) [F180100](#) [F258300](#) [F258300-B](#) [F294300-B](#) [F339100](#) [F339700](#) [F358300-](#)
[B](#) [F374110](#) [F407400](#) [F412210](#) [F427600](#) [F444110](#) [F487000](#) [F495100-B](#) [F500900-B](#) [F509500B-B](#) [770444-1](#) [776880-1](#) [827153-1](#) [881735-1](#)
[8N1515-32-24P](#) [9-1326727-8](#) [9-1326729-8](#) [925467-1](#) [925474-1](#) [928905-1](#) [936398-2](#) [964562-1](#) [964562-4](#) [964731-2](#) [965051-1](#) [968782-1](#)
[GT17SA-8DS-HU](#) [GT17VS-10DP-5.2CF](#)