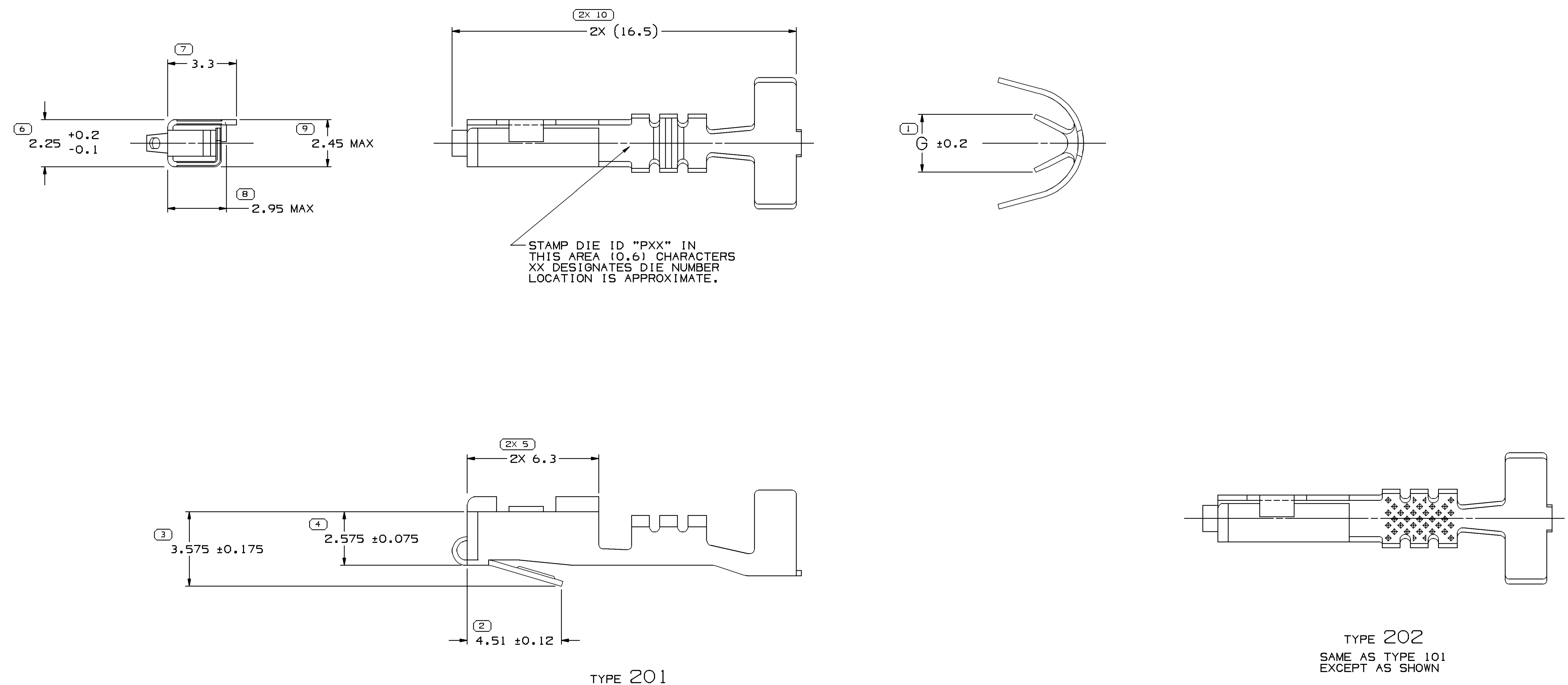


SYMBOL DEFINITION		MISSING SYMBOLS	
A DIMENSION WITHOUT AN INSPECTION REPORT SYMBOL DOES NOT REQUIRE INSPECTION. IT MAY BE CONTROLLED ON THE INDIVIDUAL COMPONENT DRAWING.	TOTAL NO OF INSPECTIONS REQUIRED	12	NO MISSING SYMBOL NUMBER
	LAST NO. USED	10	

DWG STATUS				REVISION HISTORY				AUTH		APPROV	
DATE	STG	REV	N/P	CHG	ZONE			DR	APV1	APV2	
23MY02	R	10	-	-		ALL PARTS - CLEARED REV COLUMN & REVISED MATERIAL SPECS: 12048074 - UPDATED PDM ATTRIBUTES		222820	HAM	HAM	
22AU02	R	11	-	-		15366078, 15326396, 15326225, 12160223, 12160222, 12084200 & 12048074 - REVISED MAT'L SIZE AND MAT'L SPEC		211578	ESF	EAR	
06FE03	R	12	-	-		ALL ACTIVE PARTS- UPDATED PDM ATTRIBUTES		236348	MAC	MAC	
140C03	R	13	-	-		15366078 - MAT'L SPEC WAS M3620 HCN4		245588	ADK	TLD	
17FE04	-	14	-	-		12048074, 12084200, 12092702, 12160222, 12160223, 15326225, 15326396 & 15366078 - T.O.D. UPDATED		250621	JS	JS	
190C04	R	15	-	-		ALL ACTIVE PARTS - ADDED TERMINAL ID NOTE		260108	RTV	JAA	
09MR06	R	16	-	-		12084200 & 15326396 - UPDATED PDM ATTRIBUTES		276509	JBD	AUG	
24MY06	R	17	-	-		12092702 - OBSOLETE		280889	BLG	JAA	
16JN06	R	18	-	-		ALL ACTIVE PARTS - PSD WAS #4		281799	JTZ	JVM	



TYPE 201

TYPE 202
SAME AS TYPE 101
EXCEPT AS SHOWN

- NOTES:
- UNLESS OTHERWISE SPECIFIED AND/OR INDICATED: DIMENSIONS ARE TO FACE OF VIEW SHOWN AND AUTOMATICALLY ROUNDED BY COMPUTER FOR INSPECTION. (SEE MATH MODEL FOR PRECISE DIMENSION) FOR ALL OTHER DIMENSIONS NOT SHOWN BUT REQUIRED FOR TOOL BUILD, SEE MATH MODEL FOR PRECISE TOOL PATH DATA.
 - RECOMMENDED MATING BLADE - WIDTH : 1.64/1.4
THICKNESS : 0.86/0.79
LENGTH : 7.1/6.9
 - "PXX" INDICATES "P" PLUS LAST TWO DIGITS OF MAKE SERIES NUMBER (P01, P02, P03, ETC).
 - DO NOT PROBE, TEST OR OTHERWISE CONTACT THE INTERIOR REGION (THE SPRING OR ANY MOVING PART) OF THIS TERMINAL. SEVERE DAMAGE CAN OCCUR, COMPROMISING THE PERFORMANCE OF THE ELECTRICAL INTERFACE.

PART NO	REV	N/P	STATUS	MAT'L SIZE	MAT'L SPEC	PART NO	REV	N/P	STATUS	MAT'L SIZE	MAT'L SPEC	PART NO	REV	N/P	STATUS	MAT'L SIZE	MAT'L SPEC
				0.254 X 29.8	M3620 HN4 654 SLC BRZ 1/2 HD GOLD STR					1-0.8-0.5							
				0.254 X 29.8	M3620 HN4 654 SLC BRZ 1/2 HD GOLD STR					0.5-0.35							
				0.254 X 30.96	M3640929 17410 BECU 1/2 HT SN PLTD					1-0.8-0.5							
				0.254 X 30.96	M3628929 170 BECU 1/4 HM AG/NI PLTD					1-0.8							
				0.254 X 30.96	M3628929 170 BECU 1/4 HM AG/NI PLTD					0.5-0.35							
12092702	03	AB	OBSOLETE	0.254 X 30.96	M3604401 654 SLC BRZ 1/2 HD					0.5-0.35							
				0.254 X 30.96	M3606929 654 SLC BRZ 1/2 HD SN PLTD					0.5-0.35							
				0.254 X 30.96	P3604ABP 654 SLC BRZ 1/2 HD SN PLTD					0.35							
12092667	B1	-	OBSOLETE	0.254 X 30.96	M3606929 654 SLC BRZ 1/2 HD SN PLTD					1-0.8-0.5							

DWG TYPE: PART DRAWING

STYLE: D

VOLUME 10/11 DISTR CODE: D

UNLESS OTHERWISE SPECIFIED:

THIS DOCUMENT IS IN ACCORDANCE WITH ASME Y14.9M-1994 AS MODIFIED BY THE IN CHARGE, DIMENSIONING AND TOLERANCE PRACTICES. ALL DIMENSIONS ARE IN MILLIMETERS UNLESS OTHERWISE SPECIFIED.

THIRD ANGLE PROJECTION

DO NOT SCALE USE MATH DATA

UNPLATED

DELPHI

DELPHI PACKARD ELECTRIC SYSTEMS
WVREN, OH

DR: G. LIMON A., DATE: 26AU96
APV02: FCO, KOPCA, DATE: 26AU96
APV03: T. DUTTLE, DATE: 220C96
APV04: DATE: 220C96
APV05: DATE: 220C96

SUBSTANCES OF CONCERN AND RECYCLED CONTENT PER DELPHI 1094001

DRAWING NAME: TAXI TERM F/M/P 150 TANG

DRAWING NUMBER: 12047884

SIZE: A0 SCALE: 10:1 FRAME NO: 1 OF 1 SHEET NO: 2 OF 2

Part: 12047884-01001-002 Date: 13-Sep-08 Time: 18:21

X-ON Electronics

Largest Supplier of Electrical and Electronic Components

Click to view similar products for [Automotive Connectors](#) category:

Click to view products by [Delphi](#) manufacturer:

Other Similar products are found below :

[003-018-000](#) [600858](#) [60403001](#) [60993906-B](#) [60993913-B](#) [629515004020001](#) [M902-2131](#) [M902-2161](#) [M902-2344](#) [72.330.1035.1](#)
[73.353.4028.0](#) [F118010](#) [F119300-B](#) [F132210](#) [F132210-B](#) [F166900](#) [F180100](#) [F258300](#) [F258300-B](#) [F294300-B](#) [F339100](#) [F339700](#) [F358300-](#)
[B](#) [F374110](#) [F407400](#) [F412210](#) [F427600](#) [F444110](#) [F487000](#) [F495100-B](#) [F500900-B](#) [F509500B-B](#) [770444-1](#) [776880-1](#) [827153-1](#) [881735-1](#)
[8N1515-32-24P](#) [9-1326727-8](#) [9-1326729-8](#) [925467-1](#) [925474-1](#) [928905-1](#) [936398-2](#) [964562-1](#) [964562-4](#) [964731-2](#) [965051-1](#) [968782-1](#)
[GT17SA-8DS-HU](#) [GT17VS-10DP-5.2CF](#)