

### MATERIAL SPECIFICATIONS

#### RECOMMENDED

BASE METAL - CDA-210, GILDING, EXTRA SPRING TEMPER  
 PLATING - 0.0050 x 0.0025MM THICK TIN

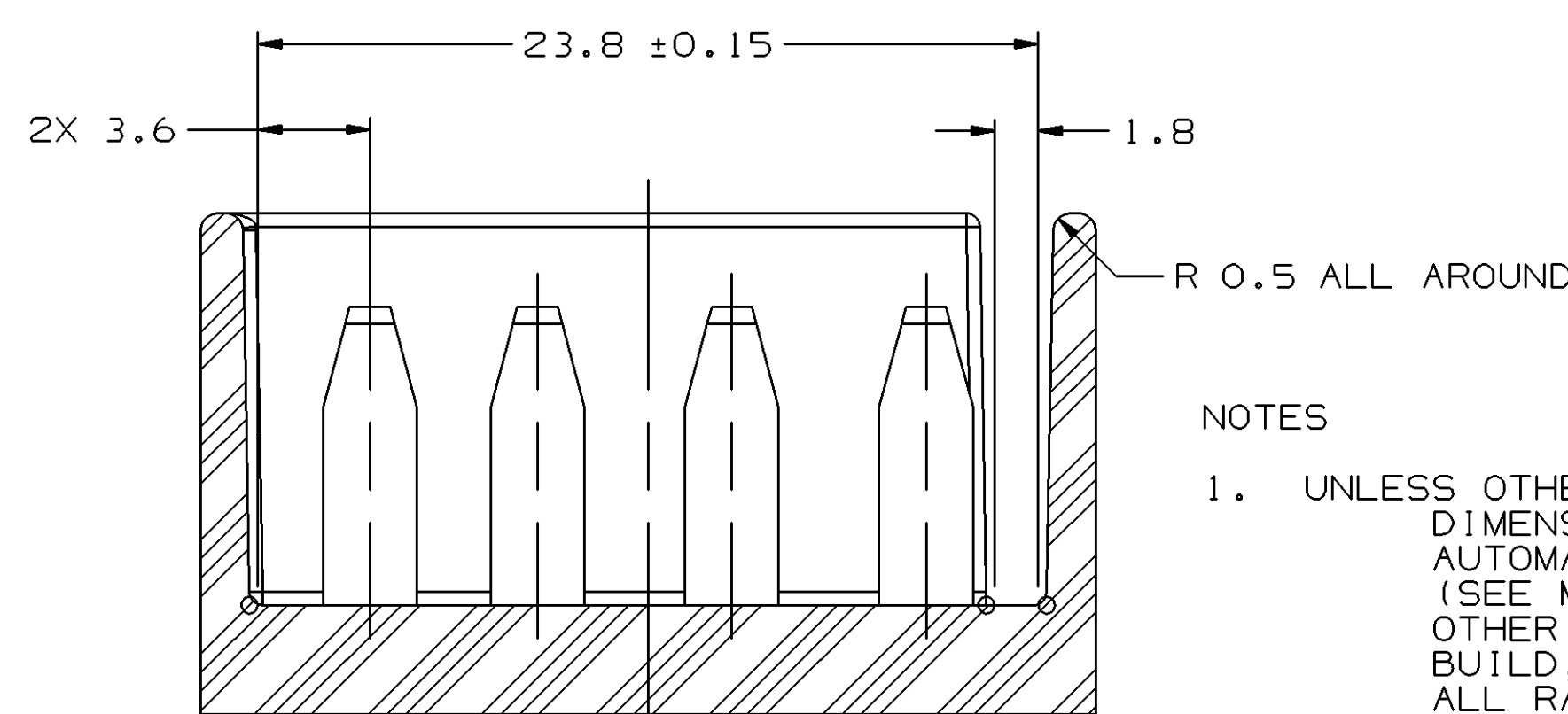
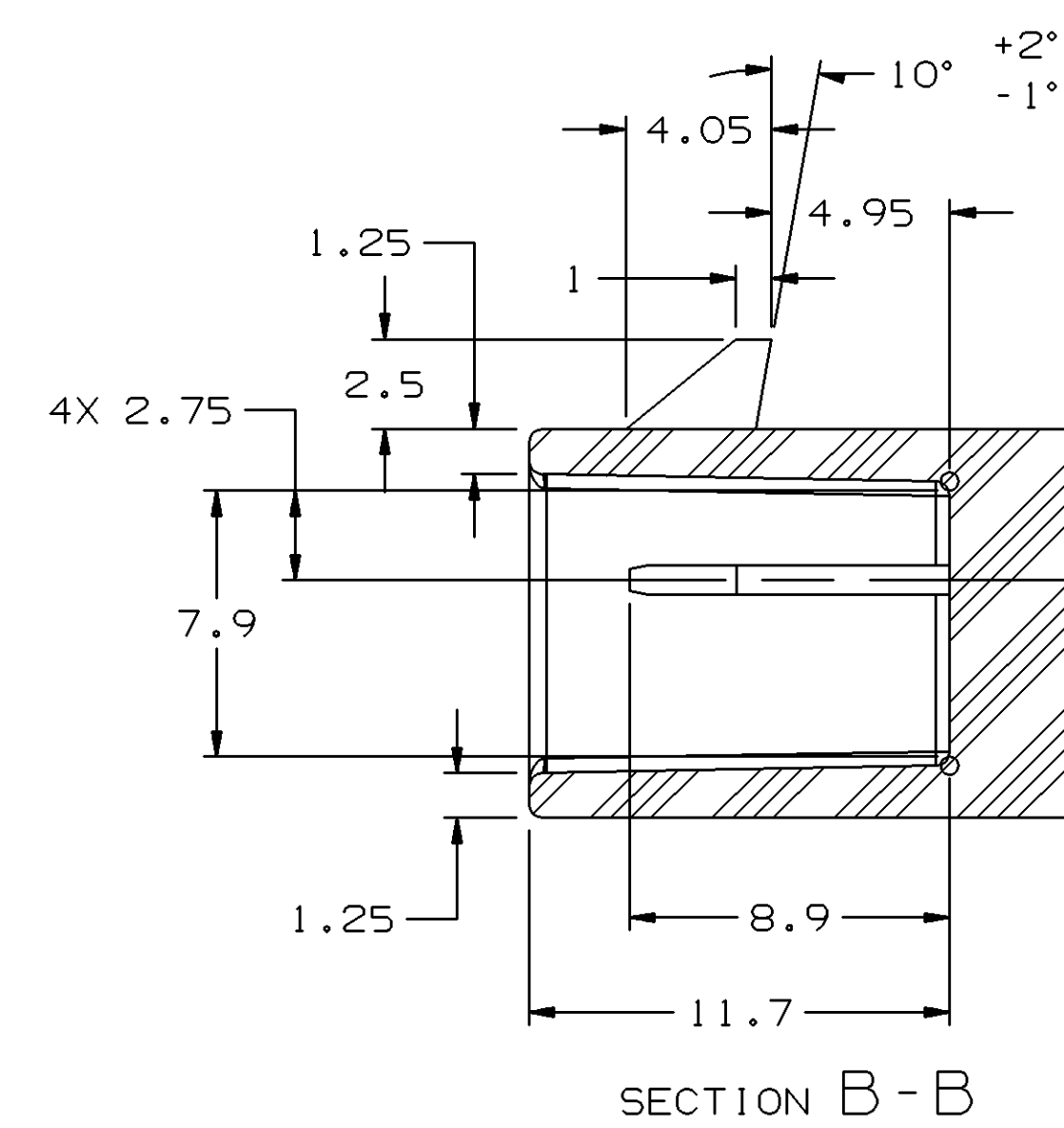
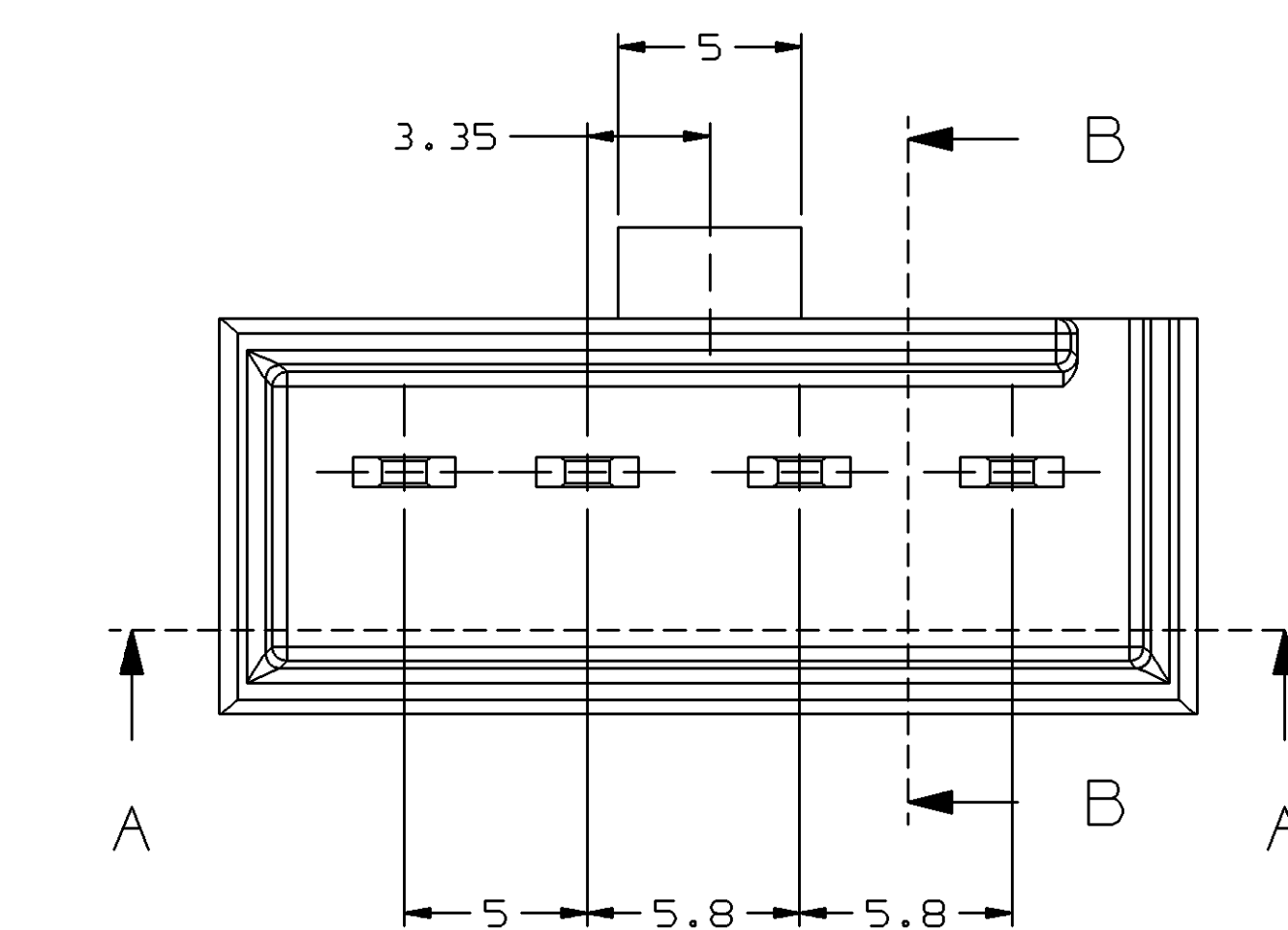
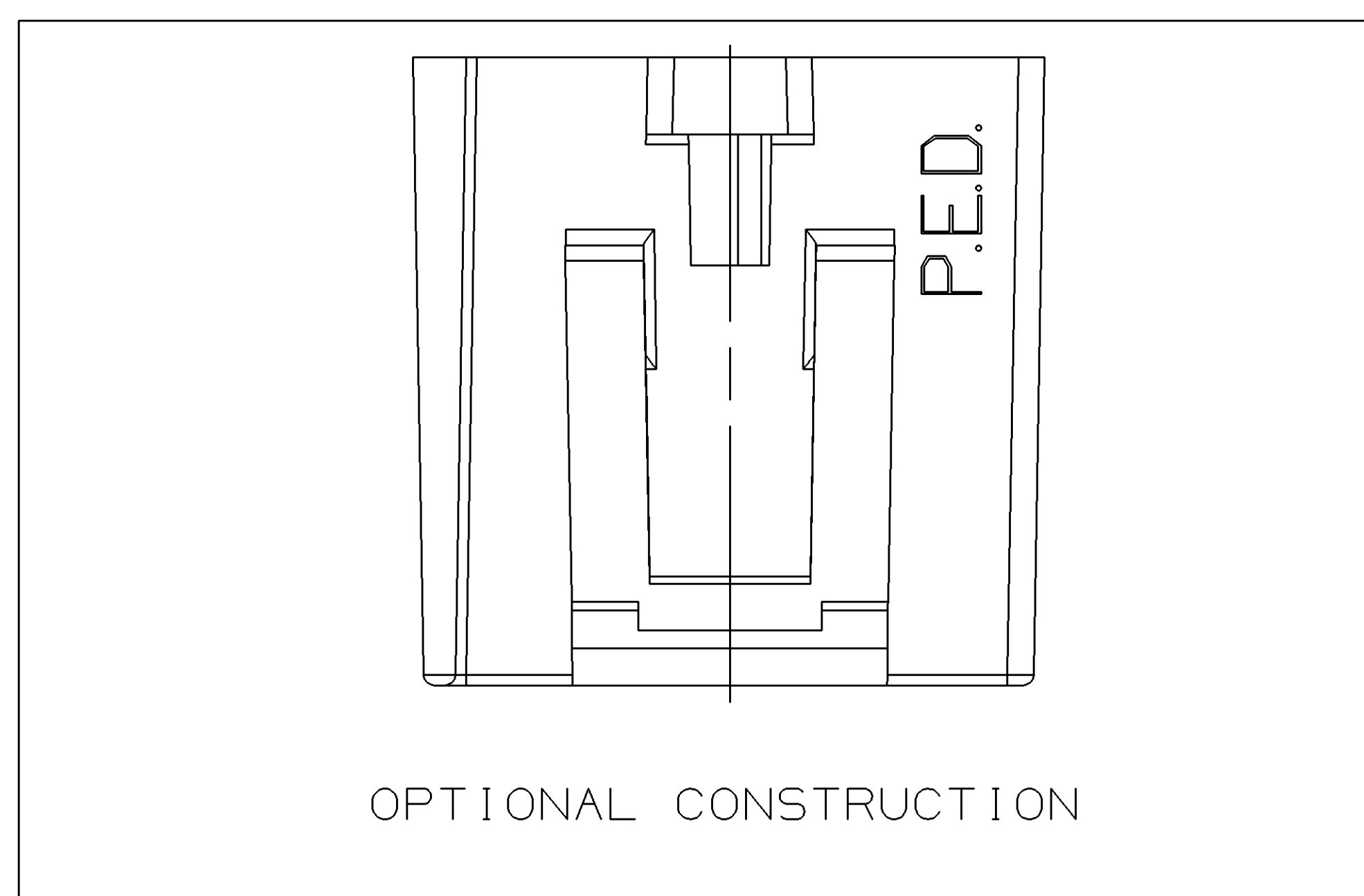
#### MINIMUMS

ELECTRICAL CONDUCTIVITY - >20% IACS AT 20° C. USE OF A MATERIAL WITH CONDUCTIVITY <20% IACS MUST BE APPROVED BY PACKARD ELECTRIC MATERIALS ENGINEERING.

TENSILE STRENGTH - 407 MPa  
 PLATING - FOR LOW ENERGY (< 5V) AND NON-PASSENGER COMPARTMENT POWER CIRCUITS, 0.0050 x 0.0025MM THICK TIN. FOR MATERIALS CONTAINING 10% OR MORE ZINC, AN UNDERPLATE OF COPPER 0.0050 x 0.0025MM THICK IS REQUIRED.

### MATING BLADE INFORMATION

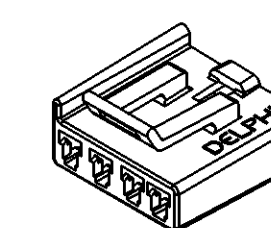
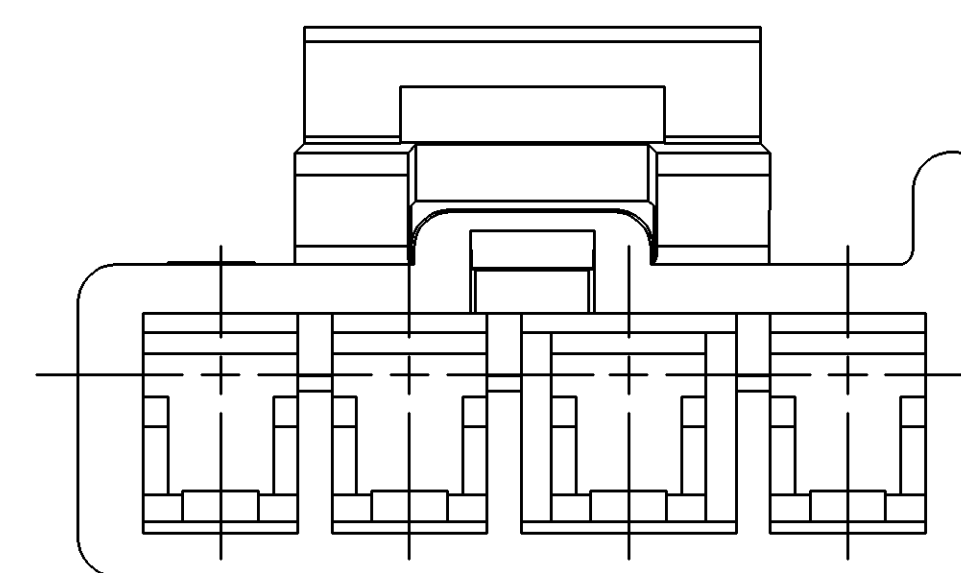
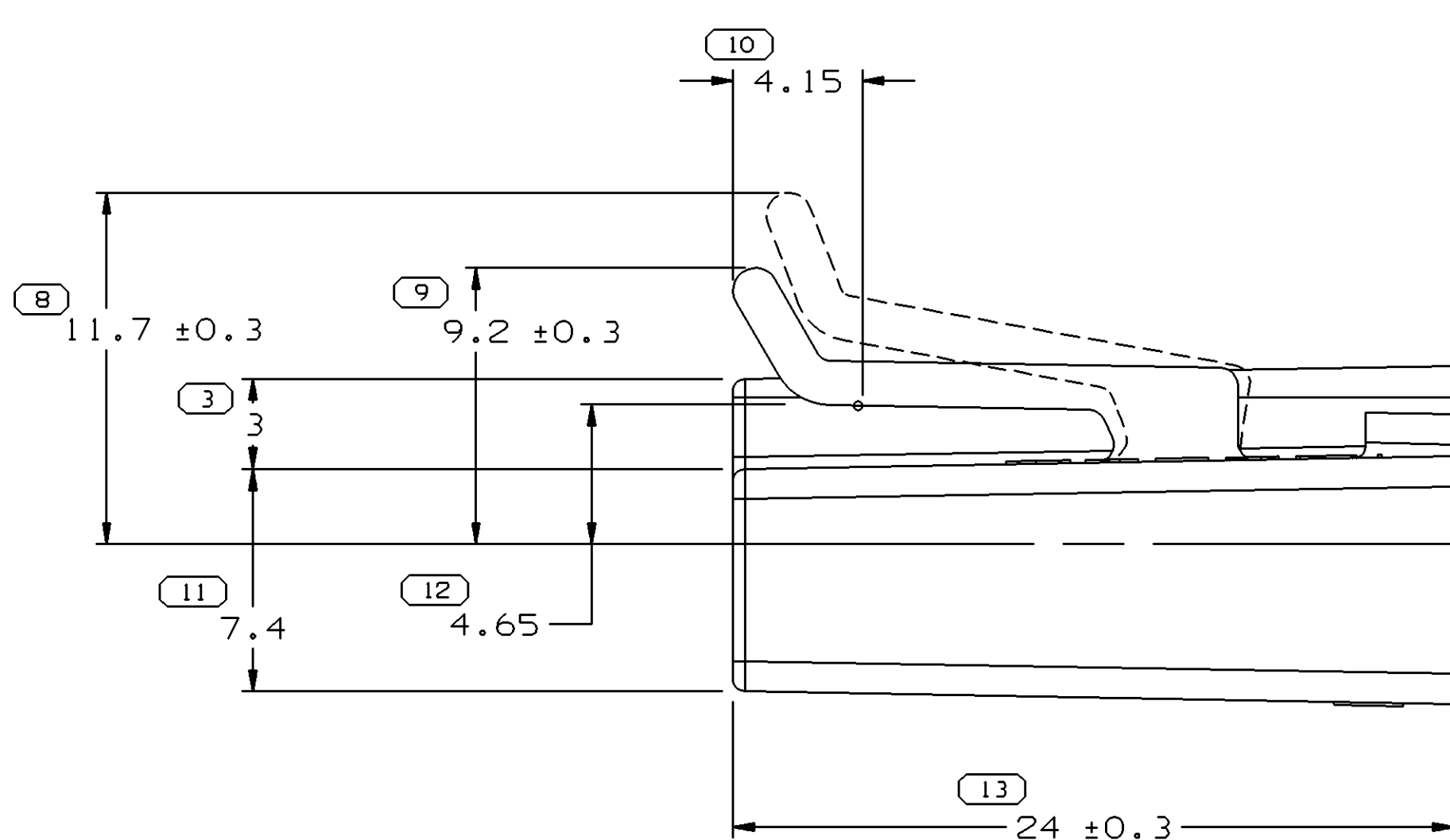
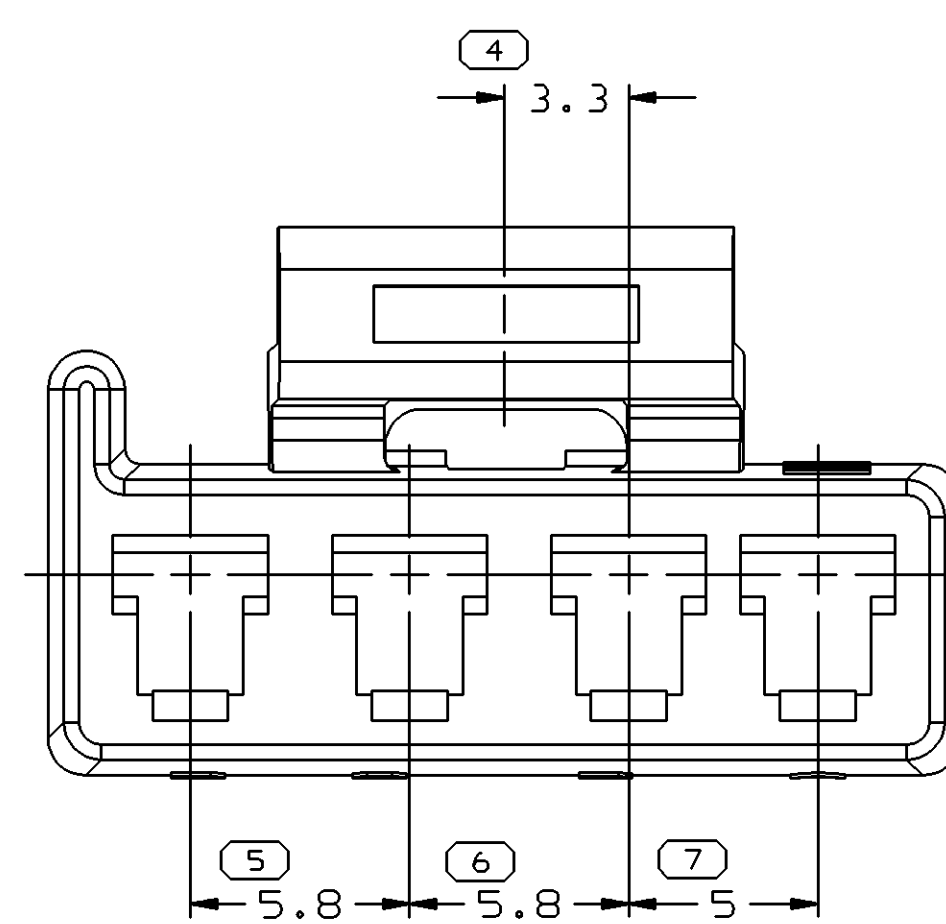
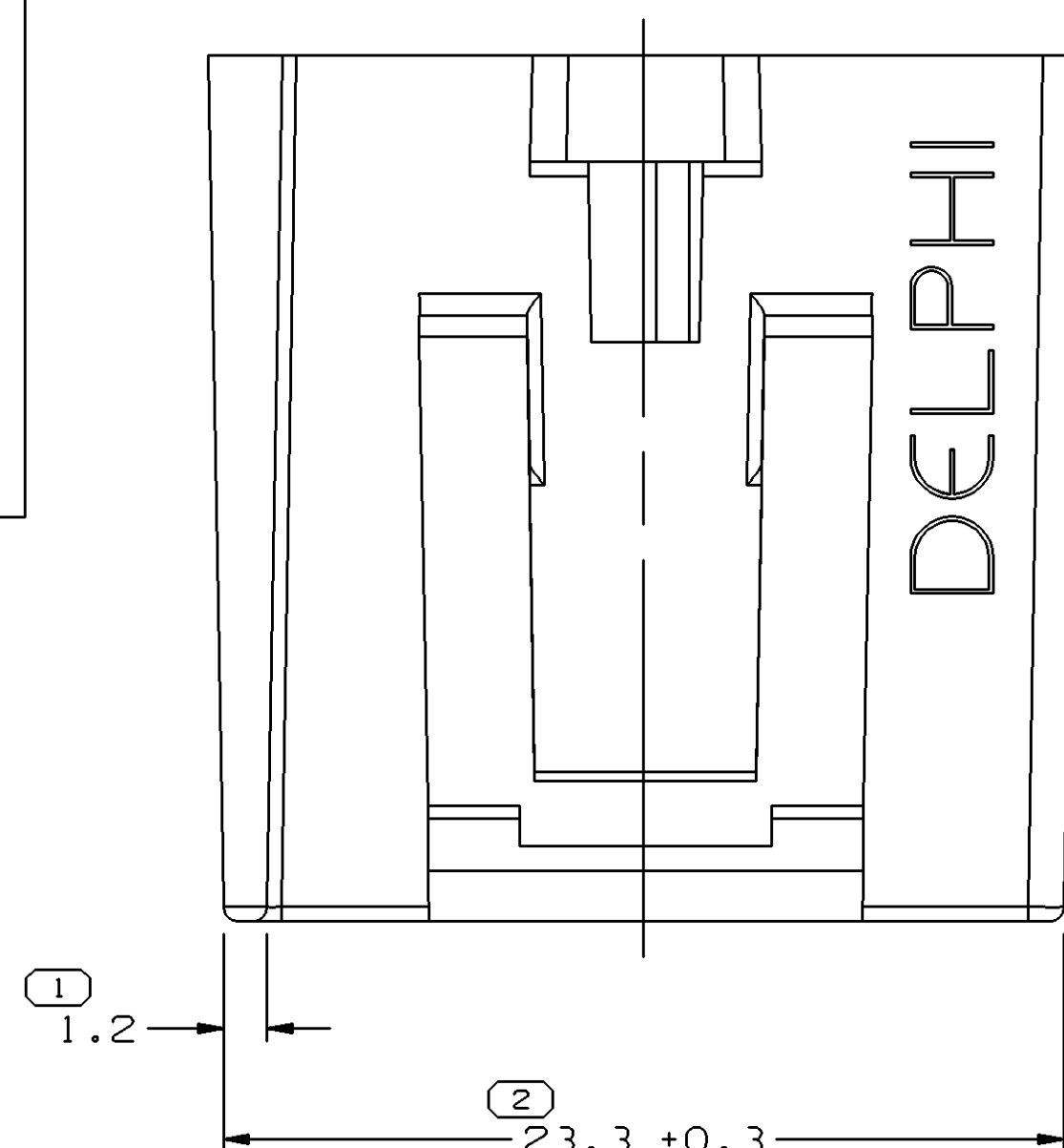
SCALE 10:1



#### NOTES

- UNLESS OTHERWISE SPECIFIED AND/OR INDICATED: DIMENSIONS ARE TO FACE OF VIEW SHOWN AND AUTOMATICALLY ROUNDED BY COMPUTER FOR INSPECTION (SEE MATH MODEL FOR PRECISE DIMENSIONS). FOR ALL OTHER DIMENSIONS NOT SHOWN BUT REQUIRED FOR TOOL BUILD, SEE MATH MODEL FOR PRECISE TOOL PATH DATA. ALL RADI: 0.4 DRAFT IS 1° ON ALL OUTSIDE SURFACES

### MATING SWITCH DETAIL



#### NOTES

- UNLESS OTHERWISE SPECIFIED AND/OR INDICATED: DIMENSIONS ARE TO FACE OF VIEW SHOWN AND AUTOMATICALLY ROUNDED BY COMPUTER FOR INSPECTION (SEE MATH MODEL FOR PRECISE DIMENSIONS). FOR ALL OTHER DIMENSIONS NOT SHOWN BUT REQUIRED FOR TOOL BUILD, SEE MATH MODEL FOR PRECISE TOOL PATH DATA. LIKE CAVITIES ARE IDENTICAL. LOCKING FEATURES ARE IDENTICAL.
- MATING COMPONENTS OR EQUIVALENT: 1995301 DELCO-REMY DIMMER SWITCH
- THIS PART ACCEPTS THE FOLLOWING COMPONENTS OR EQUIVALENT: CAVITIES TO ACCEPT 12015823 TERMINAL POSITION ASSURANCE 15324456

| SYMBOL DEFINITION  |                                 | MISSING NUMBERS |  |
|--|---------------------------------|-----------------|--|
| A DIMENSION WITHOUT AN INSPECTION REPORT SYMBOL ( ) DOES NOT REQUIRE INSPECTION. IT MAY BE CONTROLLED ON AN INDIVIDUAL COMPONENT DRAWING | TOTAL NO. OF SYMBOLS ON DRAWING | 13              |  |
|  | LAST NO. USED                   | 13              |  |

| DWG STATUS |     |     |     | ZONE |  |  |  | REVISION HISTORY  |        |     |      | AUTH | DR | APVD | APVD |
|------------|-----|-----|-----|------|--|--|--|---|--------|-----|------|------|----|------|------|
| DATE       | STG | REV | N/P | CHK  |  |  |  |   |        |     |      |      |    |      |      |
| 24JAO1     | R   | C3  | -   | -    |  |  |  | DELPHI STAMP WAS ADDED & PED STAMP CHANGED TO OPTIONAL CONSTRUCTION | 205565 | JGR | EJOV | JA   |    |      |      |
| 27FE01     | R   | C4  | -   | -    |  |  |  | REVISED GRAPHICS  | 206711 | JGR | EJOV | JA   |    |      |      |
| 10SE04     | R   | O4  | -   | -    |  |  |  | UPDATED 280 CAVITY W/ LATEST ESD                                    | 258335 | MJM | MJM  | MR   |    |      |      |

| DIMENSIONAL RANGE (MM) | TOLERANCE UNLESS OTHERWISE SPECIFIED | CHART ET |
|------------------------|--------------------------------------|----------|
| FROM 0 TO 20           | ±0.15                                | 1        |
| 20 TO 30               | ±0.2                                 | 2        |
| 30 TO 70               | ±0.3                                 | 3        |
| 70 TO 100              | ±0.4                                 | 4        |
| 100 TO 150             | ±0.5                                 | 5        |
| 150 TO 200             | ±0.6                                 | 6        |
| 200 TO 250             | ±0.8                                 | 7        |
| 250 TO 300             | ±1                                   | 8        |
| 300 TO 400             | ±1.2                                 | 9        |

| DWG TYPE   |       | PART DRAWING |   |
|--|-------|--------------|---|
| STYLE  |       | DISTR CODE   | D |
| VOLUME (COP)   | 2,587 |              |   |
| UNLESS OTHERWISE SPECIFIED   |       |              |   |
| THIS DOCUMENT IS IN ACCORDANCE WITH ASME Y14.5M-1994 AS AMENDED BY THE 2003 ADDENDUM. DIMENSIONS AND TOLERANCES UNLESS OTHERWISE SPECIFIED ARE IN MILLIMETERS. |       |              |   |
| ALL DIMENSIONS ARE IN MILLIMETERS  |       |              |   |
| REFERENCE  |       |              |   |

**DELPHI**  
 DELPHI PACKARD ELECTRIC SYSTEMS  
 WARREN, OH

| DR                | DATE   |
|-------------------|--------|
| APVD1 R.LAUNDRIES | 15JAB5 |
| APVD2 F.HESTON    | 31JAB5 |
| APVD3 F.MLAKED    | 25FE85 |
| APVD4             |        |
| APVD5             |        |

UNLESS OTHERWISE SPECIFIED  
 SUBSTANCES OF CONCERN AND RECYCLED CONTENT PER DELPHI 10949001

MATERIAL: M3592001 PA66 HS 1M BLK

DRAWING NAME: CONN 4 F M/P 280 BLK

DRAWING NUMBER: 12052856

SIZE: A0 SCALE: 5:1 FRAME NO: 1 OF 1 SHEET NO: 1 OF 1 REV: 04

## X-ON Electronics

Largest Supplier of Electrical and Electronic Components

*Click to view similar products for [Automotive Connectors](#) category:*

*Click to view products by [Delphi](#) manufacturer:*

Other Similar products are found below :

[003-018-000](#) [600858](#) [60403001](#) [60993906-B](#) [60993913-B](#) [629515004020001](#) [M902-2131](#) [M902-2161](#) [M902-2344](#) [72.330.1035.1](#)  
[73.353.4028.0](#) [F118010](#) [F119300-B](#) [F132210](#) [F132210-B](#) [F166900](#) [F180100](#) [F258300](#) [F258300-B](#) [F294300-B](#) [F339100](#) [F339700](#) [F358300-](#)  
[B](#) [F374110](#) [F407400](#) [F412210](#) [F427600](#) [F444110](#) [F487000](#) [F495100-B](#) [F500900-B](#) [F509500B-B](#) [770444-1](#) [776880-1](#) [827153-1](#) [881735-1](#)  
[8N1515-32-24P](#) [9-1326727-8](#) [9-1326729-8](#) [925467-1](#) [925474-1](#) [928905-1](#) [936398-2](#) [964562-1](#) [964562-4](#) [964731-2](#) [965051-1](#) [968782-1](#)  
[GT17SA-8DS-HU](#) [GT17VS-10DP-5.2CF](#)