

The MaxLinear logo features the word "MAXLINEAR" in a bold, black, serif font. It is framed by two red curved lines, one above and one below, which together form a partial circle. A thick red horizontal line is positioned below the logo.

MAXLINEAR

The tagline "ENVISIONING • EMPOWERING • EXCELLING" is centered below the logo. It is preceded by a faint, light-colored version of the red curved lines from the logo. A thick red horizontal line is positioned above the tagline.

ENVISIONING • EMPOWERING • EXCELLING

MxL7204

Evaluation Board Manual

Revision History

Revision	Release Date	Change Description
1A	2/13/18	Initial Release
1B	8/3/18	Changed pin names for connection points to match datasheet (page 2). Updated Tables 3, 4 and 5 and Jumper J_TRACK2 section.

Table of Contents

Introduction.....	1
Ordering Information.....	2
Evaluation Board Overview.....	2
System Set-Up	2
Powering Up the Evaluation Board.....	3
Monitoring or Testing V_{OUT}.....	3
Header EXTVCC	4
Jumper J_MODE	4
Jumper J_TRACK1	5
Jumper J_TRACK2	6
Jumpers J_RUN1 and J_RUN2.....	7
PGOOD	7
Pin Configuration	8
MxL7204EVB Schematic.....	9
MxL7204EVB PCB Layers.....	10
MxL7204EVB Bill of Materials	14

List of Tables

Table 1: Evaluation Board Ordering Part Number 2

Table 2: Factory Settings 2

Table 3: Jumper J_MODE 4

Table 4: Jumper J_TRACK1 Configurations..... 6

Table 5: Jumper J_TRACK2 Configurations..... 6

Table 6: EVB Bill of Materials 14

List of Figures

Figure 1: Top View of MxL7204EVB.....	1
Figure 2: Block Diagram MxL7204EVB.....	2
Figure 3: V_{IN} and V_{OUT} Connections.....	3
Figure 4: Header EXTVCC.....	4
Figure 5: J_TRACK Jumpers.....	5
Figure 6: RUN Connectors.....	7
Figure 7: PGOOD Connections.....	7
Figure 8: Pin Configuration.....	8
Figure 9: EVB Schematic.....	9
Figure 10: EVB PCB, Top View.....	10
Figure 11: EVB PCB Layer 2, Ground Plane.....	11
Figure 12: EVB PCB Layer 3, Signal Plane.....	12
Figure 13: EVB PCB, Bottom View.....	13

Introduction

The MxL7204 evaluation board provides a platform to evaluate the features and performance of the MxL7204. The MxL7204 is a dual 4A Power Module optimized for powering Telecom, Networking and Industrial equipment.

The factory default configuration for the MxL7204 Evaluation Board is

- $V_{OUT1} = 3.3V$
- $V_{OUT2} = 1.8V$
- 780kHz switching frequency

Please refer to the [MxL7204 datasheet](#) for additional information about the MxL7204, including efficiency curves for this configuration with $V_{IN} = 12V$.

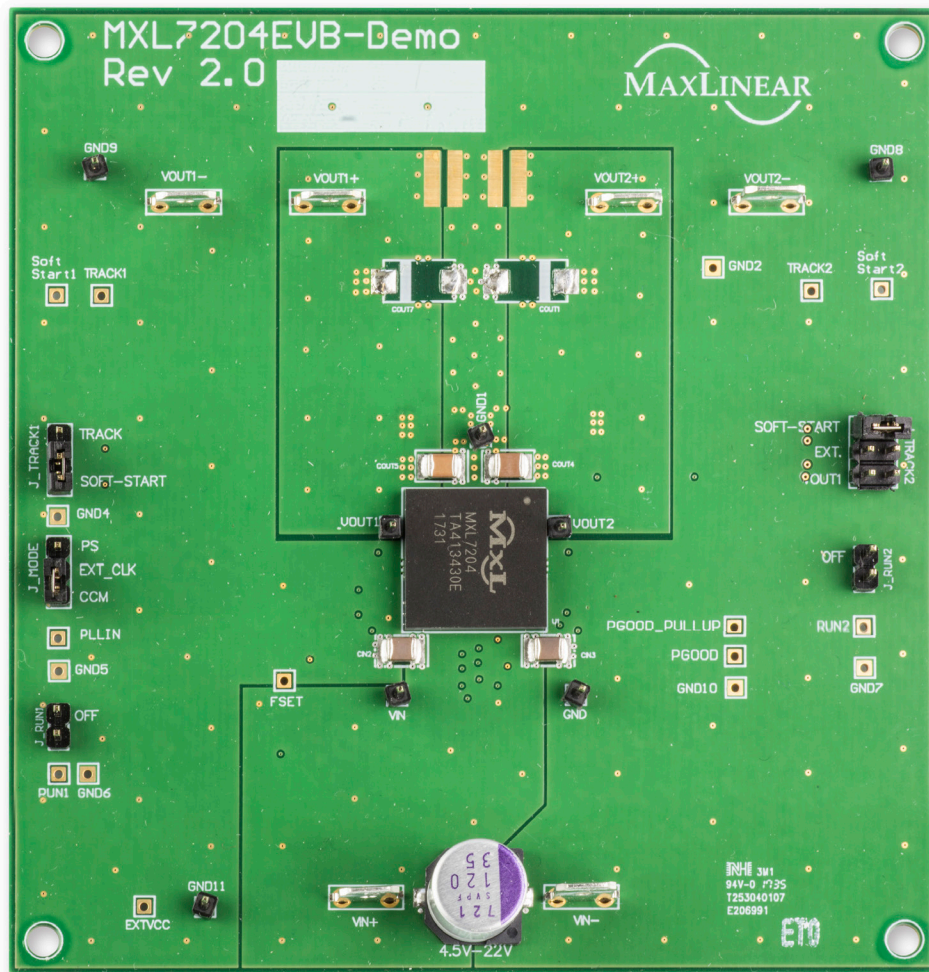


Figure 1: Top View of MxL7204EVB

Ordering Information

Table 1: Evaluation Board Ordering Part Number

Power Module	Evaluation Board
MxL7204-AYA-T	MxL7204EVB

NOTE:

1. Refer to www.exar.com/MxL7204 for most up-to-date Ordering Information.

Evaluation Board Overview

The block diagram shown in Figure 2 illustrates the connection points for VIN, VOUT1, VOUT2, TR/SS, MODE/PLLIN and RUN pins.

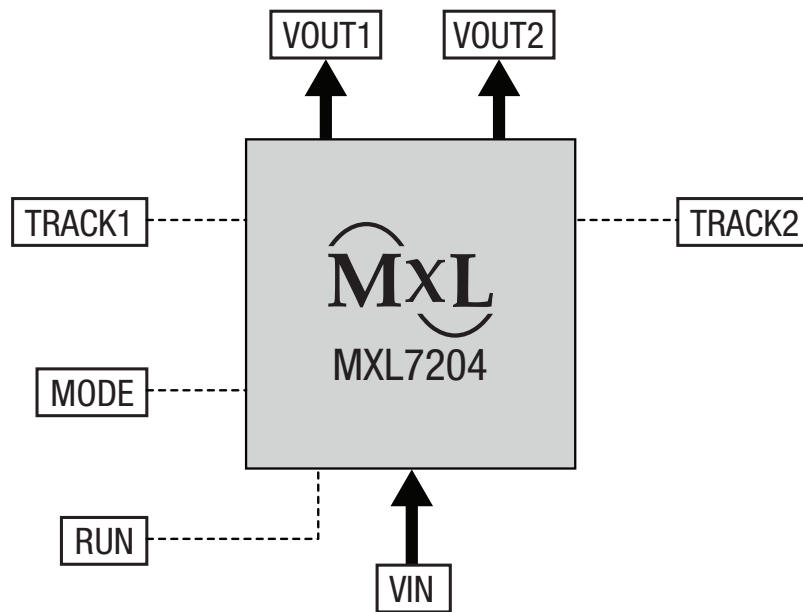


Figure 2: Block Diagram MxL7204EVb

System Set-Up

Jumpers are factory installed per Table 2 to configure the EVB for operation. Jumper and testing options are described in the next sections. Refer to the product data sheet for additional information.

Table 2: Factory Settings

Jumper	Factory Setting	Description
J_MODE	Jumper 2-3	Mode_PLLIN = GND, forced Continuous Conduction Mode (CCM)
J_TRACK1	Jumper 2-3	TR/SS1 = GND, Soft-Start mode
J_TRACK2	Jumper 5-6	TR/SS2 = GND, Soft-Start mode

Powering Up the Evaluation Board

- Connect the VIN+/VIN- with short, thick leads to a 5.5V to 20V (12V typical) power supply. Use test pins VIN and GND to monitor V_{IN} and GND respectively. See Note A.
- Turn on the power supply. The MxL7204 EVB will power up and regulate the channel 1 output at 3.3V and channel 2 output at 1.8V.

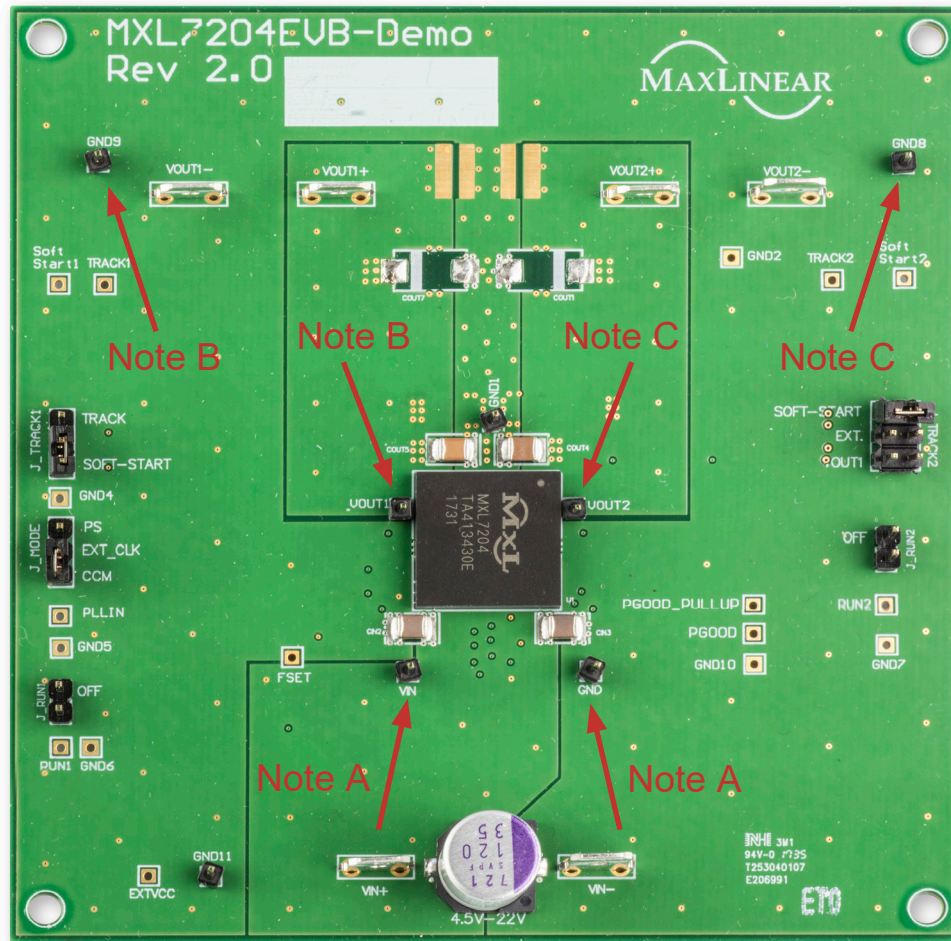


Figure 3: V_{IN} and V_{OUT} Connections

Monitoring or Testing V_{OUT}

- For the channel 1 output, connect VOUT1+/VOUT1- with short, thick leads to an electronic load or DUT. Use test pins VOUT1 and GND9 to monitor VOUT1+ and VOUT1- respectively. See Note B.
- For the channel 2 output, connect VOUT2+/VOUT2- with short, thick leads to an electronic load or DUT. Use test pins VOUT2 and GND8 to monitor VOUT2+ and VOUT2- respectively. See Note C.

Header EXTVCC

An external power input may be applied to EXTVCC. It is enabled into the MxL7204 through an internal switch in the IC to drive INTVCC whenever EXTVCC is greater than 4.7V. Do not exceed 6V on the EXTVCC input. Connect the EXTVCC pin to VIN when VIN is less than 5.5V. Note from the datasheet that VIN must be applied before EXTVCC and EXTVCC must be removed before VIN.

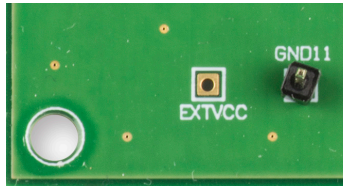


Figure 4: Header EXTVCC

Jumper J_MODE

By default, the jumper is set in CCM position (2-3) with the jumper connected between EXT_CLK and CCM. In this configuration, the MODE/PLLIN pin is connected to SGND which forces both channels into forced continuous mode of operation. The MxL7204 EVB will operate in “forced CCM”.

Table 3: Jumper J_MODE

Jumper Position		Configuration
No jumper or 1-2		Pulse-skipping
2-3		Forced continuous mode, both channels (factory installed)
No jumper, external clock connected to EXT_CLK		Continuous mode synchronized to the external clock

If there is no jumper or if the jumper is set to the PS position with the jumper connected between EXT_CLK and PS (1-2), and with MODE/PLLIN floating (no jumper) or connected to INTV_{CC} (1-2), both channels are forced into pulse-skipping mode of operation.

An external clock supply may be applied to MODE/PLLIN pin. To do this, first remove the J_MODE jumper and connect the external clock to EXT_CLK. This will force both channels into continuous mode of operation.

Jumper J_TRACK1

By default, the jumper is set in the SOFT-START position with TRACK1 pin connect to GND (2-3). Refer to pin description the product datasheet for other options. Changing the jumper to (1-2) connects the TRACK1 pin for output voltage tracking.

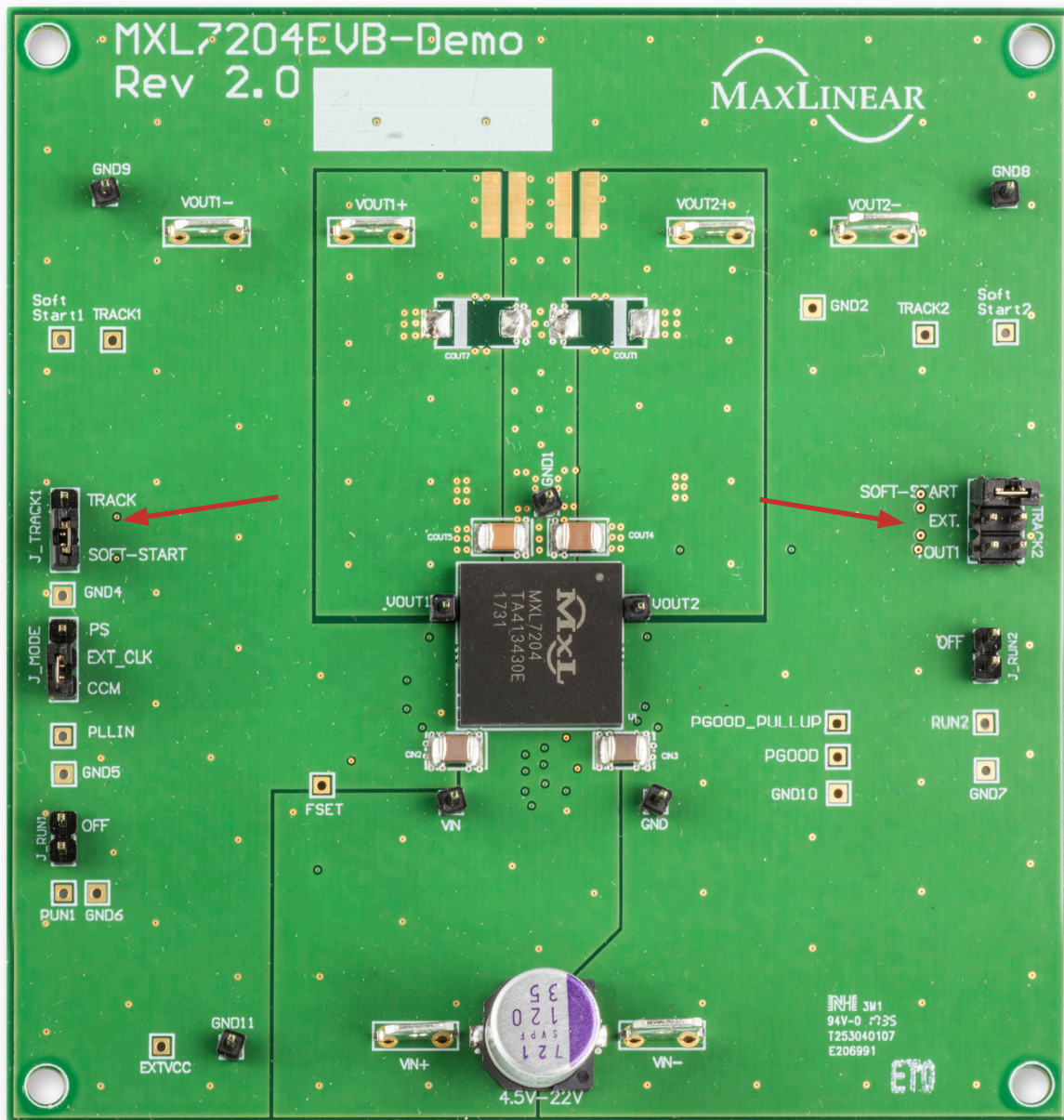




Figure 5: J_TRACK Jumpers

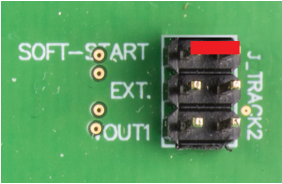
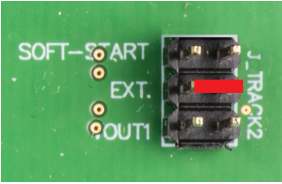
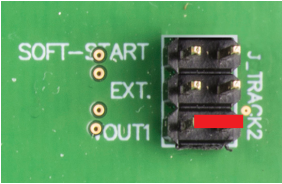
Table 4: Jumper J_TRACK1 Configurations

Jumper Position	Configuration
1-2	 Output Voltage Tracking
2-3	 Soft-start (factory installed)

Jumper J_TRACK2

The jumper can be placed in one of three positions to choose SOFT-START, TRACK or to be used in a master-slave configuration. By default, the jumper is set in the SOFT-START position (5-6) with the TRACK2 pin connect to GND via the soft-start capacitor. The jumper can be changed to the EXT (3-4) position for Output Voltage Tracking (TRACK) using R15 and R18 on the bottom side. Alternatively, the jumper can be changed to the VOUT1 position (1-2) for a master/slave configuration between channel 1 and channel 2, populating R10 and R13 on bottom side as desired to change the resistor values for TRACK. See the schematic as an example where R15 = R18 = 60.4kΩ. Refer to the product datasheet for more information.

Table 5: Jumper J_TRACK2 Configurations

Jumper Position	Configuration
5-6	 Soft-start (factory installed)
3-4	 Output Voltage Tracking
1-2	 Slave to Channel 1

Jumpers J_RUN1 and J_RUN2

If desired, putting a jumper on headers J_RUN1 or J_RUN2 will inhibit their respective outputs, VOUT1 or VOUT2. Without a jumper on the respective J_RUN header, the output will not be inhibited.

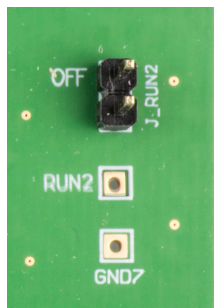


Figure 6: RUN Connectors

PGOOD

The Power Good output can be monitored. Also there is another point, PGOOD_PULLUP, where a different pullup voltage can be applied to alter the PGOOD high level voltage.

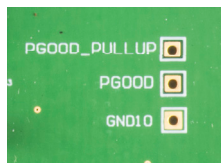
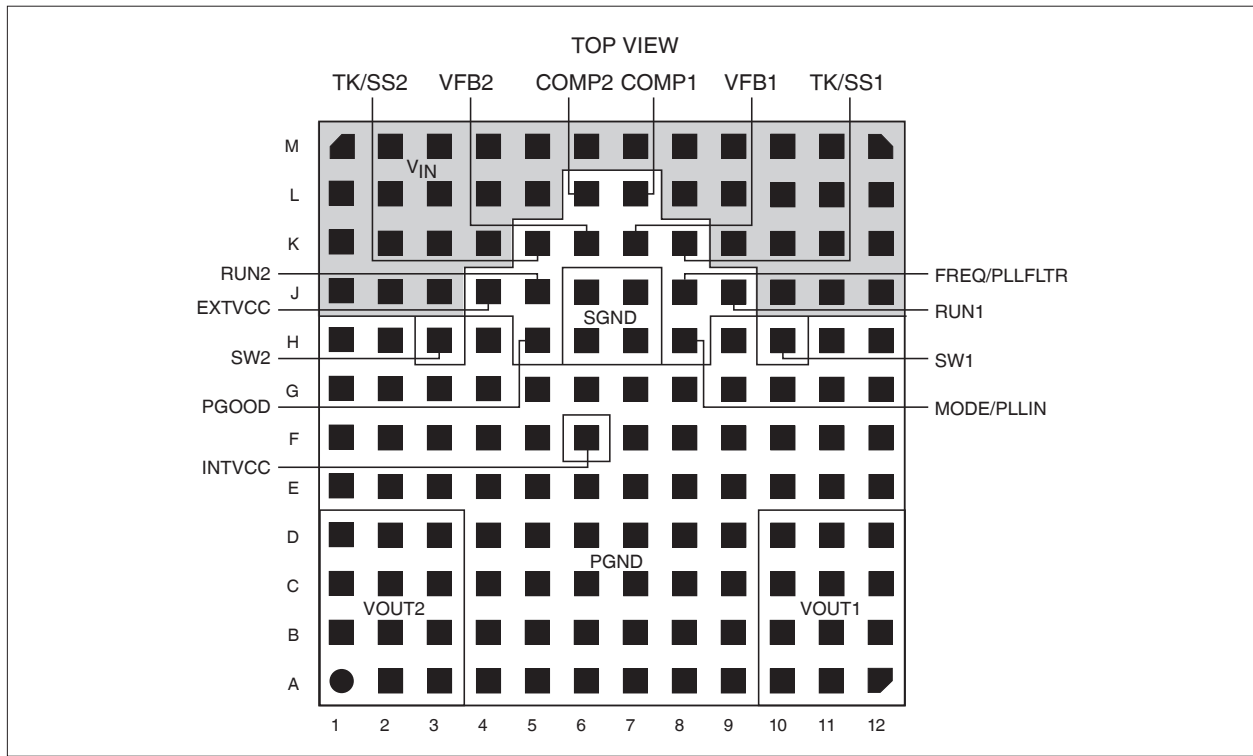


Figure 7: PGOOD Connections

Pin Configuration



Top View, 15mm x 15mm x 2.82mm LGA

Figure 8: Pin Configuration

MxL7204EVB PCB Layers

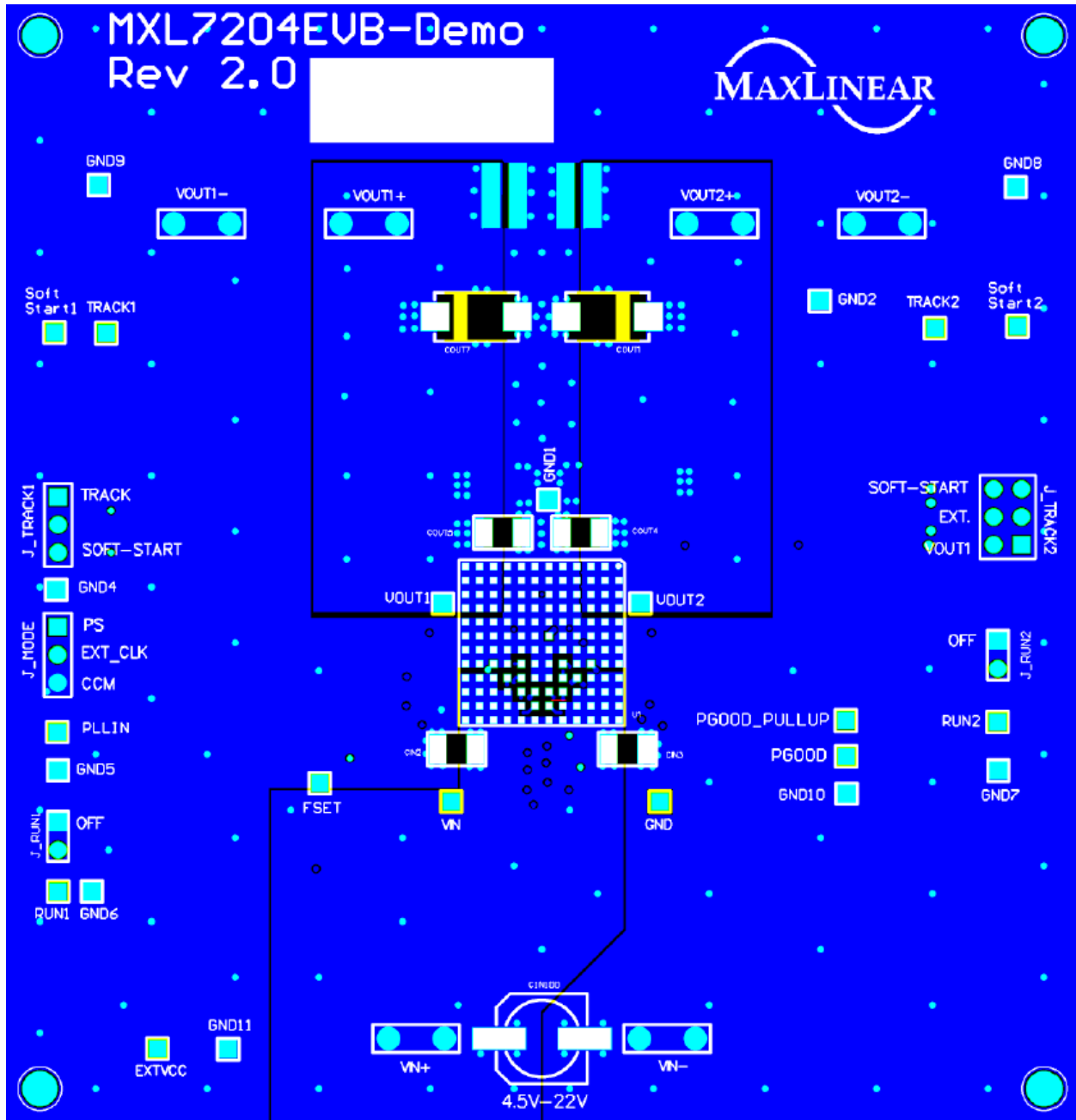


Figure 10: EVB PCB, Top View

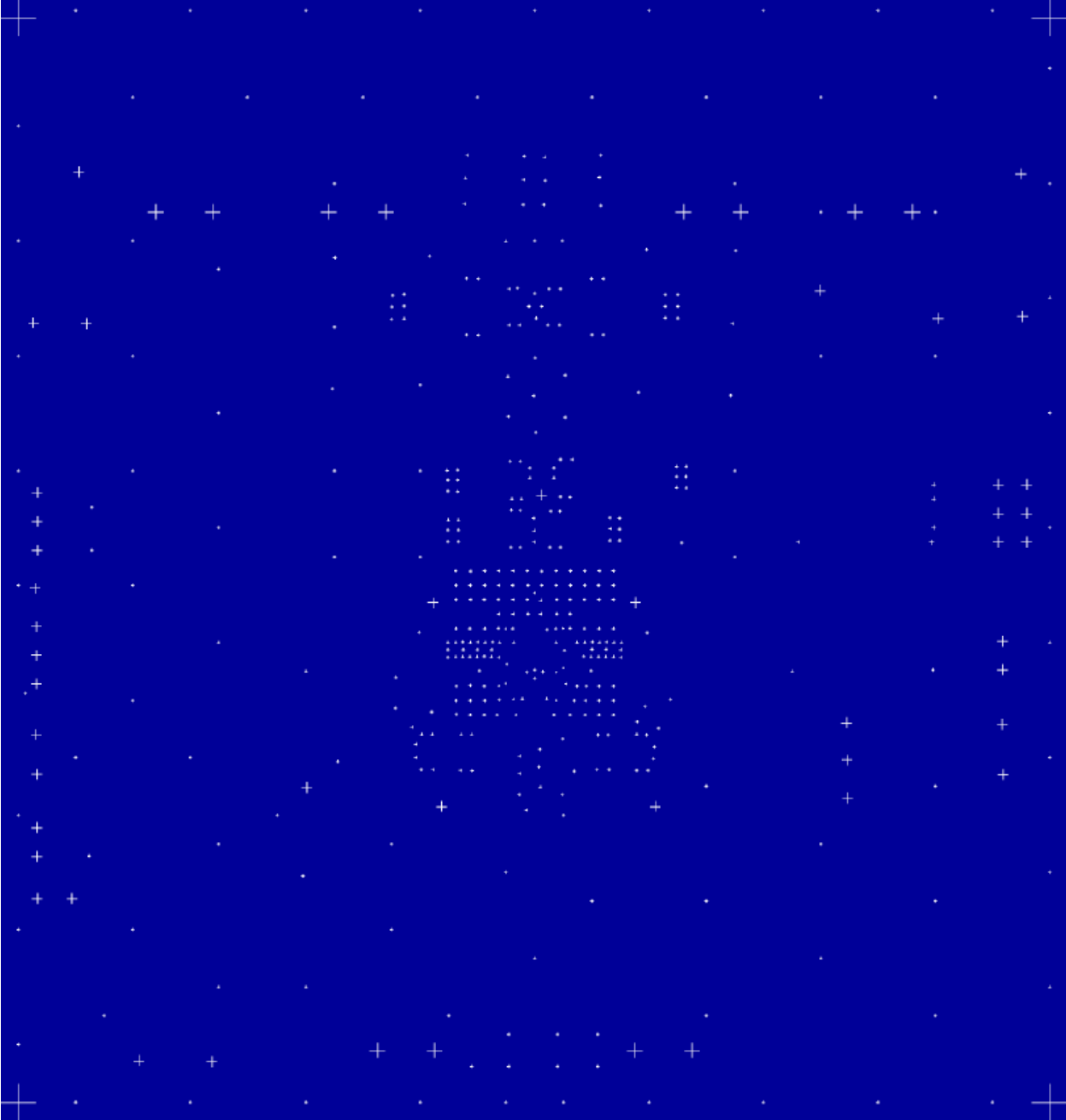


Figure 11: EVB PCB Layer 2, Ground Plane

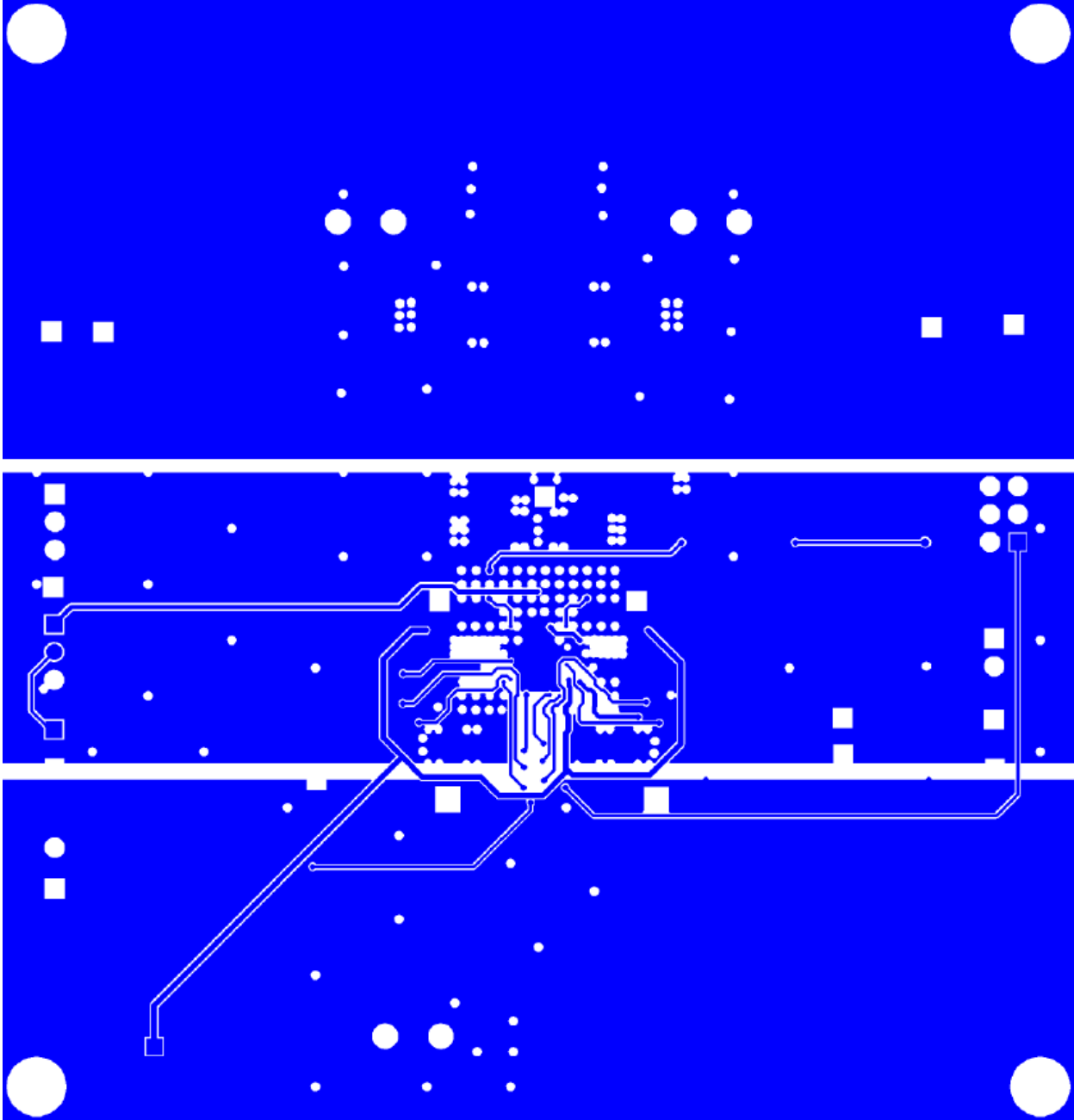


Figure 12: EVB PCB Layer 3, Signal Plane

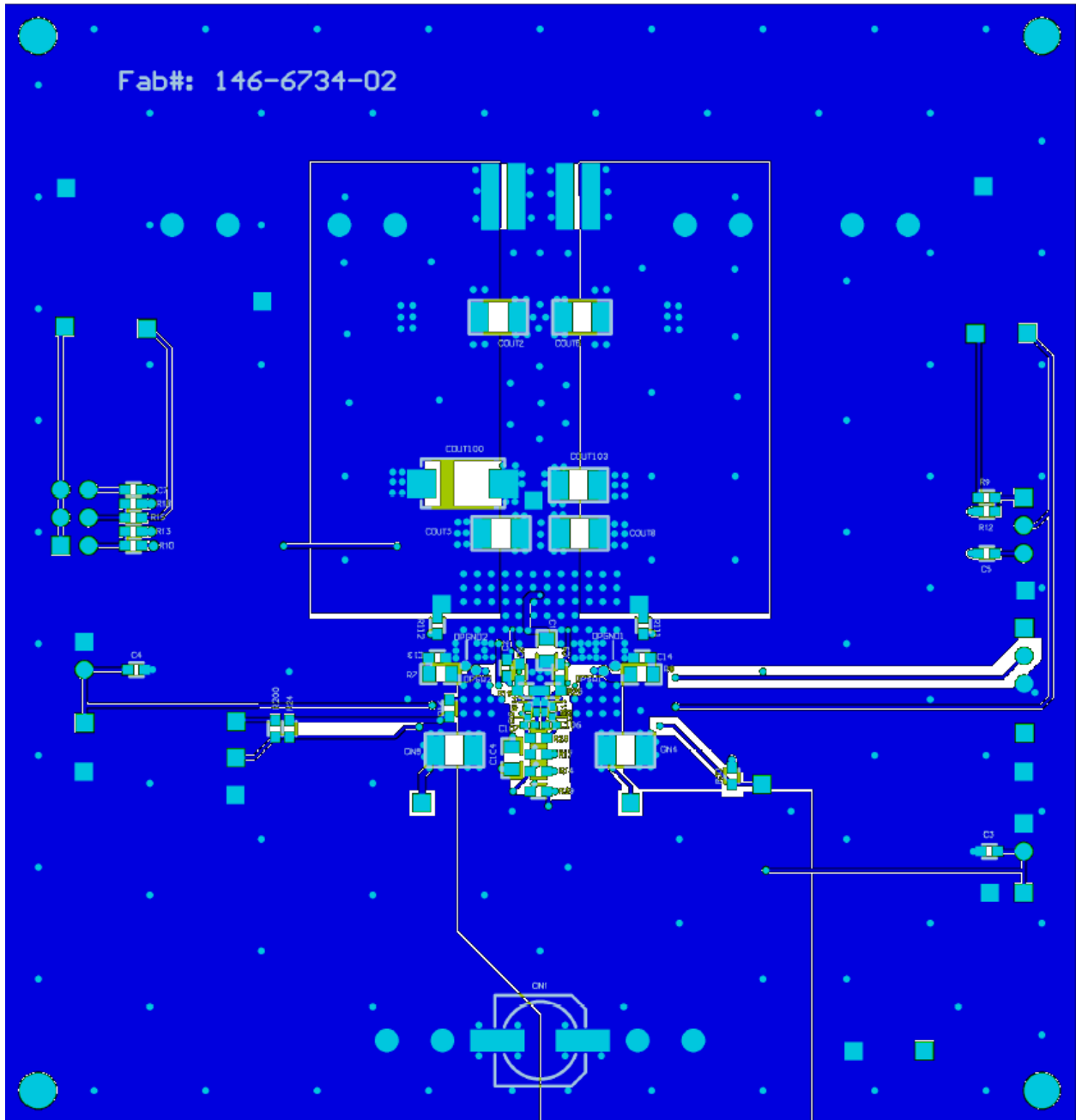


Figure 13: EVB PCB, Bottom View

MxL7204EVB Bill of Materials

Table 6: EVB Bill of Materials

Item	Qty	Reference Designator	Manufacturer	Part Number	Package Size	Component
1	1	PCB	MaxLinear	146-6734-02	PCB	MXL7204EVB Evaluation Board
2	1	U1	MaxLinear	MXL7204AYA-T	15x15mmLGA	MXL7204 Power Module
3	1	CIN100	Panasonic	35SVPF120M	10.3x10.3mm	OSCON 120 μ F, 35V
4	4	CIN2, CIN3, CIN4, CIN5	Murata	GRM32ER71H106KA12L	1210	Ceramic Cap., 10 μ F, 50V, X7R, 10%
5	3	COUT2, COUT3, COUT4	Murata	GRM32ER71A476KE15L	1210	Ceramic Cap., 47 μ F, 10V, X7R, 10%
6	3	COUT5, COUT8, COUT6	Murata	GRM32ER71A476KE15L	1210	Ceramic Cap., 47 μ F, 10V, X7R, 10%
7	1	C6	Murata	GRM1885C1H330JA01D	0603	Ceramic Cap., 33 μ F, 50V, NP0, 10%
8	1	C9	Murata	GRM1885C1H220JA01D	0603	Ceramic Cap., 22 μ F, 50V, NP0, 10%
9	2	C1, C104	Murata	GRM21BR71C475KA73L	0805	Ceramic Cap., 4.7 μ F, 16V, X7R, 10%
10	1	C2	Murata	GRM188R71C105KA12D	0603	Ceramic Cap., 1.0 μ F, 16V, X7R, 10%
11	2	C5, C7	Murata	GRM188R71H104KA93D	0603	Ceramic Cap., 0.1 μ F, 50V, X7R, 10%
12	1	R19	Panasonic	ERJ-3EKF3012V	0603	Resistor 30.1k Ω , 1/10W, 1%, SMD
13	1	R25	Panasonic	ERJ-3EKF1332V	0603	Resistor 13.3k Ω , 1/10W, 1%, SMD
14	1	R30	Panasonic	ERJ-3EKF2053V	0603	Resistor 205k Ω , 1/10W, 1%, SMD
15	1	R24	Panasonic	ERJ-3EKF1002V	0603	Resistor 10.0k Ω , 1/10W, 1%, SMD
16	4	VIN, GND, VOUT1, VOUT2	Würth Elektronik	61300111121	2.54mm	Header 1 pin
17	4	GND1, GND8, GND9, GND11	Würth Elektronik	61300111121	2.54mm	Header 1 pin
18	2	J_TRACK1, J_MODE	Würth Elektronik	61300311121	2.54mm	Header 3 pin
19	2	J_RUN1, J_RUN2	Würth Elektronik	61300211121	2.54mm	Header 2 pin
20	1	J_TRACK2	Würth Elektronik	61300621121	2.54mm	Header 6 pin dual row
21	2	VIN+, VIN-	Würth Elektronik	7471287	0.32x0.10in	Blade connectors
22	2	VOUT1+, VOUT1-	Würth Elektronik	7471287	0.32x0.10in	Blade connectors
23	2	VOUT2+, VOUT2-	Würth Elektronik	7471287	0.32x0.10in	Blade connectors

**MaxLinear, Inc.**

5966 La Place Court, Suite 100

Carlsbad, CA 92008

760.692.0711 p

760.444.8598 f

www.maxlinear.com**High Performance Analog**

1060 Rincon Circle

San Jose, California 95131 USA

669.265.6100 p

669.265.6101 f

www.exar.com

The content of this document is furnished for informational use only, is subject to change without notice, and should not be construed as a commitment by MaxLinear, Inc.. MaxLinear, Inc. assumes no responsibility or liability for any errors or inaccuracies that may appear in the informational content contained in this guide. Complying with all applicable copyright laws is the responsibility of the user. Without limiting the rights under copyright, no part of this document may be reproduced into, stored in, or introduced into a retrieval system, or transmitted in any form or by any means (electronic, mechanical, photocopying, recording, or otherwise), or for any purpose, without the express written permission of MaxLinear, Inc.

MaxLinear, Inc. may have patents, patent applications, trademarks, copyrights, or other intellectual property rights covering subject matter in this document. Except as expressly provided in any written license agreement from MaxLinear, Inc., the furnishing of this document does not give you any license to these patents, trademarks, copyrights, or other intellectual property.

Trademarks

Company and product names may be registered trademarks or trademarks of the respective owners with which they are associated.

Copyright

© 2018 MaxLinear, Inc. All rights reserved.

X-ON Electronics

Largest Supplier of Electrical and Electronic Components

Click to view similar products for [Power Management IC Development Tools](#) category:

Click to view products by [Exar](#) manufacturer:

Other Similar products are found below :

[EVAL6482H-DISC](#) [EVAL-AD5522EBUZ](#) [EVAL-ADM1060EBZ](#) [EVAL-ADM1073MEBZ](#) [EVAL-ADM1166TQEBZ](#) [EVAL-ADM1168LQEBZ](#) [EVAL-ADM1171EBZ](#) [EVAL-ADM1276EBZ](#) [EVB-EN5319QI](#) [EVB-EN5365QI](#) [EVB-EN6347QI](#) [EVB-EP5348UI](#) [MIC23158YML EV](#) [MIC23451-AAAYFL EV](#) [MIC5281YMME EV](#) [124352-HMC860LP3E](#) [ADM00513](#) [ADM8611-EVALZ](#) [ADM8612-EVALZ](#) [ADM8613-EVALZ](#) [ADP1046ADC1-EVALZ](#) [ADP1055-EVALZ](#) [ADP122-3.3-EVALZ](#) [ADP130-0.8-EVALZ](#) [ADP130-1.2-EVALZ](#) [ADP130-1.5-EVALZ](#) [ADP130-1.8-EVALZ](#) [ADP160UJZ-REDYKIT](#) [ADP166UJ-EVALZ](#) [ADP1712-3.3-EVALZ](#) [ADP1714-3.3-EVALZ](#) [ADP1715-3.3-EVALZ](#) [ADP1716-2.5-EVALZ](#) [ADP1740-1.5-EVALZ](#) [ADP1752-1.5-EVALZ](#) [ADP1754-1.5-EVALZ](#) [ADP1828LC-EVALZ](#) [ADP1870-0.3-EVALZ](#) [ADP1871-0.6-EVALZ](#) [ADP1873-0.6-EVALZ](#) [ADP1874-0.3-EVALZ](#) [ADP1876-EVALZ](#) [ADP1879-1.0-EVALZ](#) [ADP1882-1.0-EVALZ](#) [ADP1883-0.6-EVALZ](#) [ADP197CB-EVALZ](#) [ADP199CB-EVALZ](#) [ADP2102-1.25-EVALZ](#) [ADP2102-1.2-EVALZ](#) [ADP2102-1.875EVALZ](#)