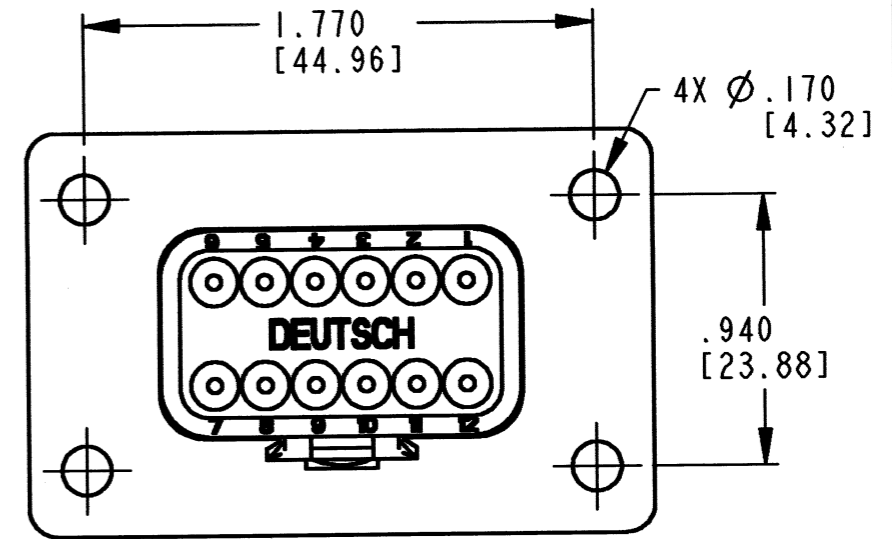
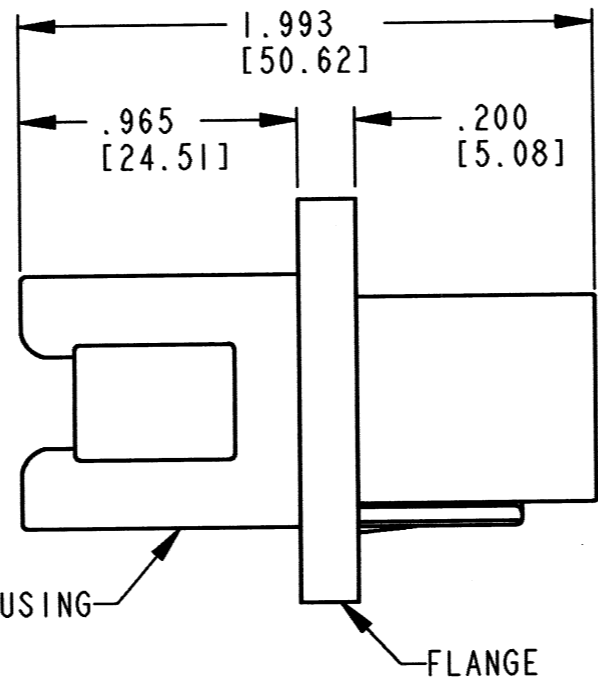
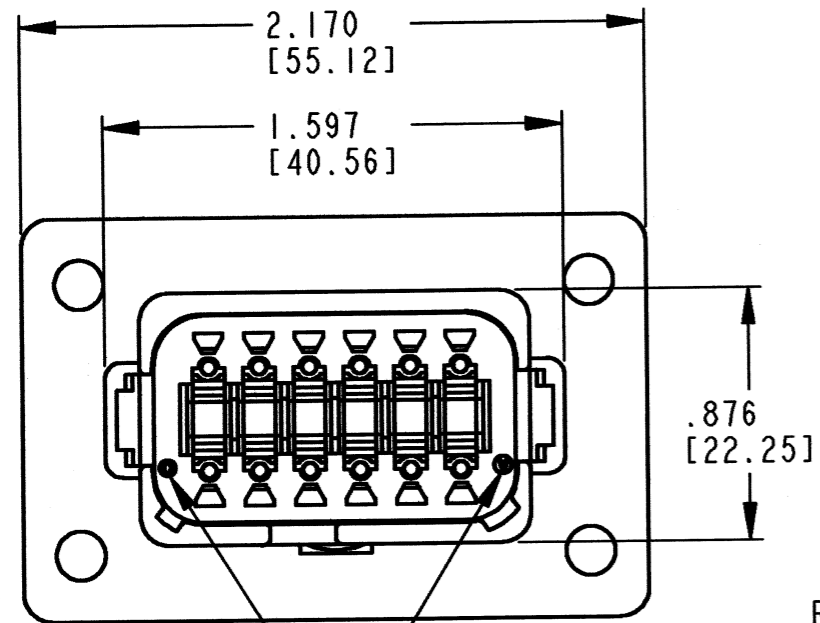


REV
A DT04-12P*-BL04

REVISIONS			
SYM	DESCRIPTION	DATE	APPROVED
NC	NEW RELEASE/REPLACES PREVIOUS		
	RELEASE PER E.O. P20101	4/15/09	R.D.R.
A	REVISED PER E.O. P20438	5-18-10	RDR



DATE CODE: MONTH IS REPRESENTED BY SEQUENTIAL ALPHA CHARACTERS. EX: A = JANUARY
YEAR IS REPRESENTED BY LAST DIGIT. EX. 0 = 2000.

CONTACT SIZE	MIN. INSUL. O.D.	MAX. INSUL. O.D.	WIRE RANGE [mm ²]
16	.088 [2.24]	.145 [3.68]	14-20 AWG [2.0-0.5]

5. MATERIAL - SHELL: PLASTIC
SEAL: RUBBER

4. THIS RECEPTACLE MATES WITH DT06-12S*-****. (* = KEY ARR. A,B,C,D, ****=ALL MODIFICATIONS.) CONSULT FACTORY FOR MODIFICATIONS.

3. FOR CONTACTS AND WIRE PERFORMANCE AND APPLICATION CHARACTERISTICS SEE ENVELOPE DRAWING 0425-015-0000 AND 0425-017-0000.

2. DIMENSIONS ARE ±.025[0.63] UNLESS OTHERWISE SPECIFIED.

NOTES: 1. DIMENSIONS ARE IN INCHES [MILLIMETERS].

SIGNATURE & DATE	
DR	R. MESSENGER 1/6/09
CHK	P. M... 5/14/10
PE	K. M... 2/22/10
APPD	S. B... 5-4-10
SCALE	NONE WT

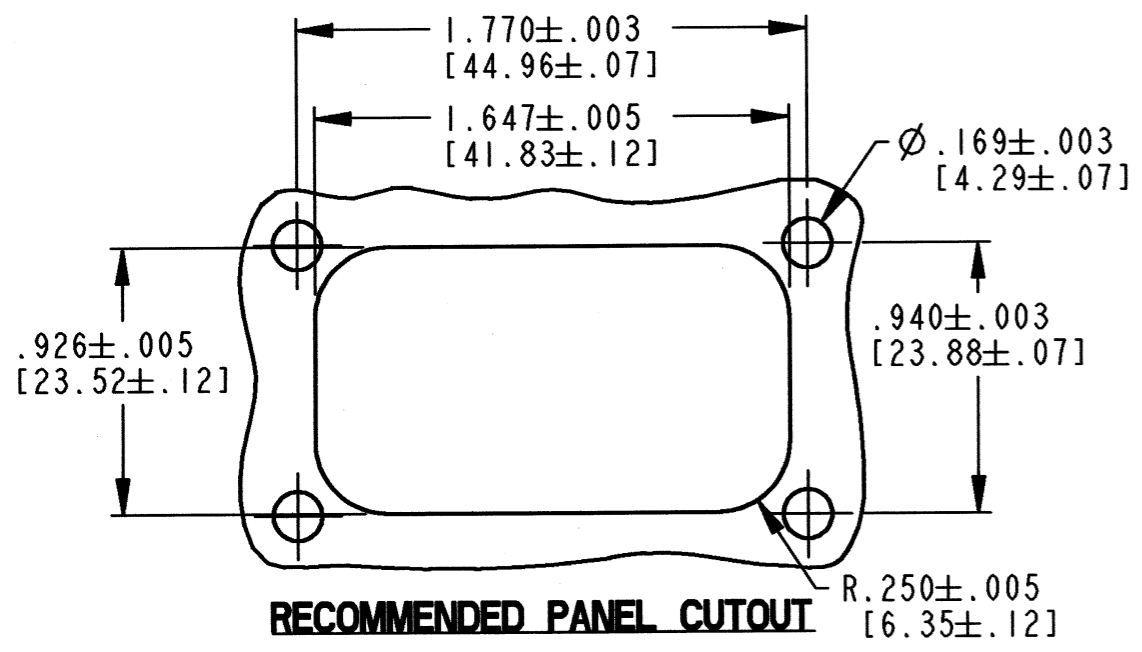
12 WAY RECEPTACLE
WITH ENHANCED KEY
AND FLANGE
DT SERIES

ENVELOPE

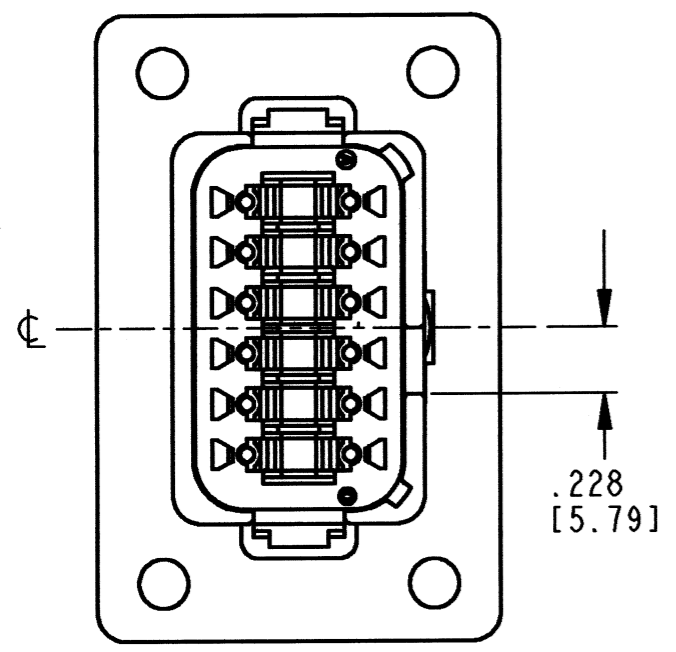
EP	MATL. CODE
3850 INDUSTRIAL AVE. HEMET, CA 92545	
B DT04-12P*-BL04	
DWG SIZE	SHEET 1 OF 2

REV
A DT04-12P*-BL04

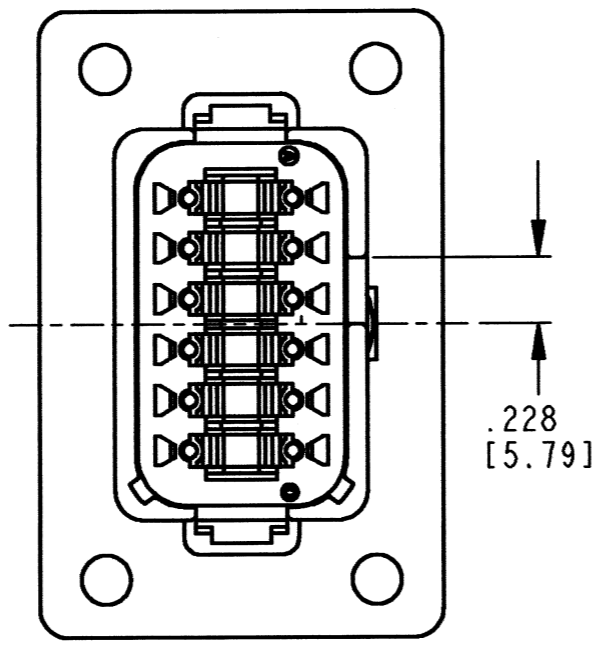
REVISIONS			
SYM	DESCRIPTION	DATE	APPROVED
A	SEE SHEET 1	5-18-10	<i>DR</i>



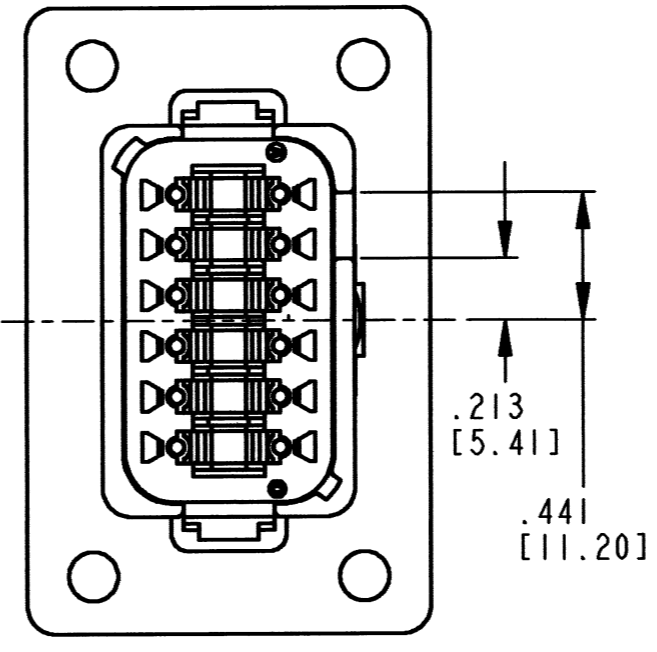
DT04-12PA-BL04
KEY -A-
COLOR: GRAY



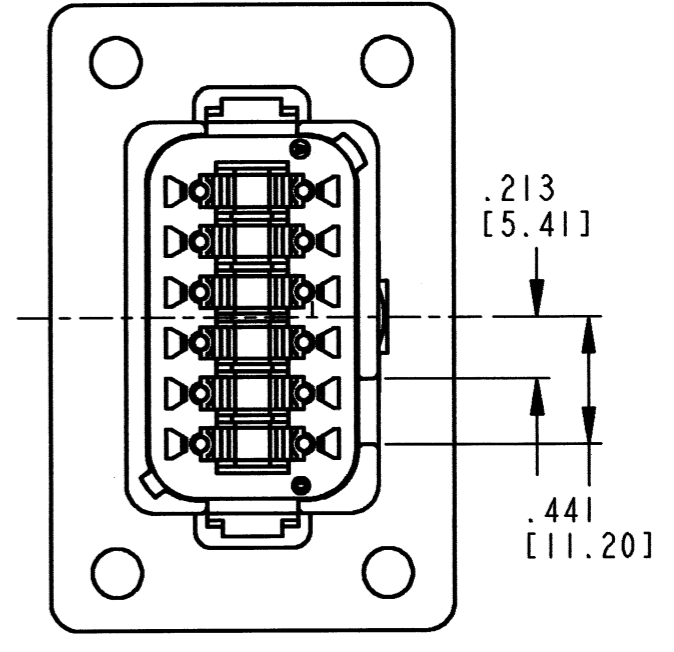
DT04-12PB-BL04
KEY -B-
COLOR: BLACK



DT04-12PC-BL04
KEY -C-
COLOR: GREEN



DT04-12PD-BL04
KEY -D-
COLOR: BROWN



NOTES:

SIGNATURE & DATE	
DR	<i>R. MESSENGER 1/6/09</i>
CHK	<i>R. M. 5/14/10</i>
PE	<i>R. Messenger 2/22/10</i>
APPD	<i>S. Bump 5-4-10</i>
SCALE	NONE WT

**12 WAY RECEPTACLE
WITH ENHANCED KEY
AND FLANGE
DT SERIES**

ENVELOPE

EP	MATL. CODE
3850 INDUSTRIAL AVE. HEMET, CA 92545	
B	DT04-12P*-BL04
DWG SIZE	CODE 11139 SHEET 2 OF 2

X-ON Electronics

Largest Supplier of Electrical and Electronic Components

Click to view similar products for [Automotive Connectors](#) category:

Click to view products by [TE Connectivity](#) manufacturer:

Other Similar products are found below :

[003-018-000](#) [600858](#) [60403001](#) [60993906-B](#) [60993913-B](#) [629515004020001](#) [M902-2131](#) [M902-2161](#) [M902-2344](#) [72.330.1035.1](#)
[73.353.4028.0](#) [F118010](#) [F119300-B](#) [F132210](#) [F132210-B](#) [F166900](#) [F180100](#) [F258300](#) [F258300-B](#) [F294300-B](#) [F339100](#) [F339700](#) [F358300-](#)
[B](#) [F374110](#) [F407400](#) [F412210](#) [F427600](#) [F444110](#) [F487000](#) [F495100-B](#) [F500900-B](#) [F509500B-B](#) [770444-1](#) [776880-1](#) [827153-1](#) [881735-1](#)
[8N1515-32-24P](#) [9-1326727-8](#) [9-1326729-8](#) [925467-1](#) [925474-1](#) [928905-1](#) [936398-2](#) [964562-1](#) [964562-4](#) [964731-2](#) [965051-1](#) [968782-1](#)
[GT17SA-8DS-HU](#) [GT17VS-10DP-5.2CF](#)