

PRODUCT DESCRIPTION CODE :

10131935-YXXXLF

RoHS COMPATIBLE, SEE NOTE 3
 PACKAGING : "A" : TAPE & REEL
 "U" : TUBE
 PLATING : TOTAL NUMBER OF POSITIONS 02 TO 25

- 1 = 0.76 μm GOLD ON CONTACT AREA
2.54μm MIN MATTE TIN ON TAIL
- 2 = 0.38μm GOLD ON CONTACT AREA
2.54μm MIN MATTE TIN ON TAIL
- 3 = 0.20μm GOLD ON CONTACT AREA
2.54μm MIN MATTE TIN ON TAIL
- 4 = 0.76 μm GXT ON CONTACT AREA
2.54μm MIN MATTE TIN ON TAIL
- 5 = 0.38μm GXT ON CONTACT AREA
2.54μm MIN MATTE TIN ON TAIL
- 6 = 0.20μm GXT ON CONTACT AREA
2.54μm MIN MATTE TIN ON TAIL
- 9 = 2.54μm MIN MATTE TIN FULL PLATED
1.27μm NICKEL MIN UNDERLAYER

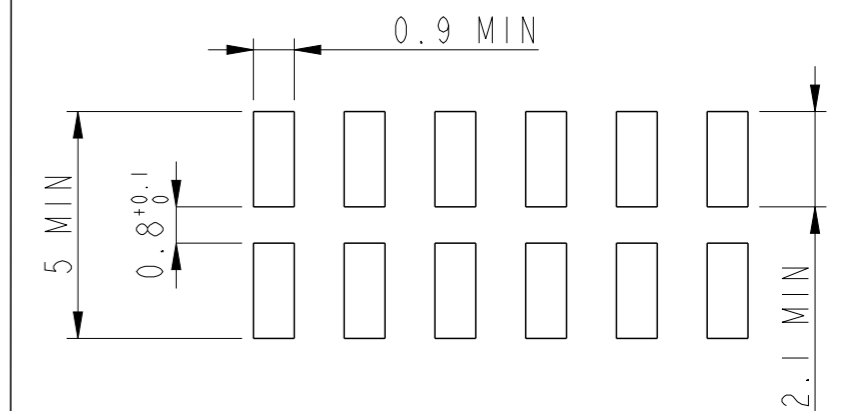
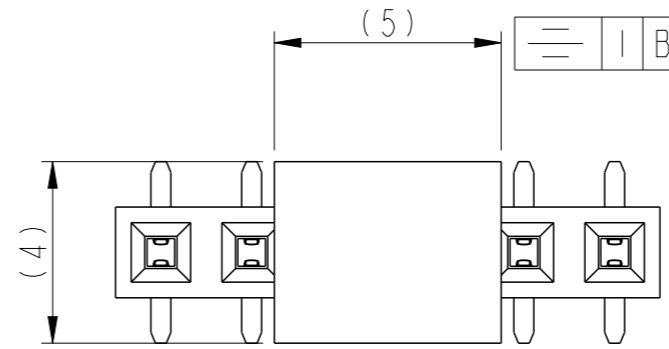
NOTES :

1- MATERIAL
 HOUSING : HIGH TEMPERATURE GLASS FILLED FLAME
 RETARDANT PER UL 94 V-0
 TERMINAL: COPPER ALLOY

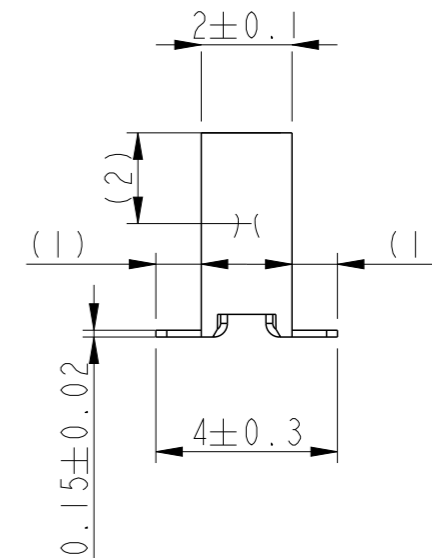
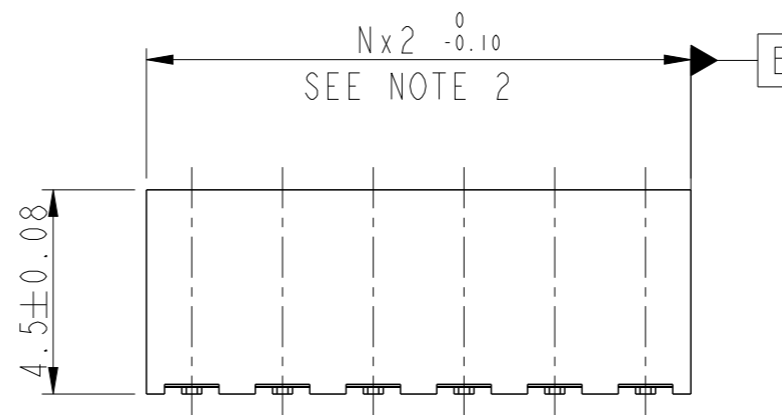
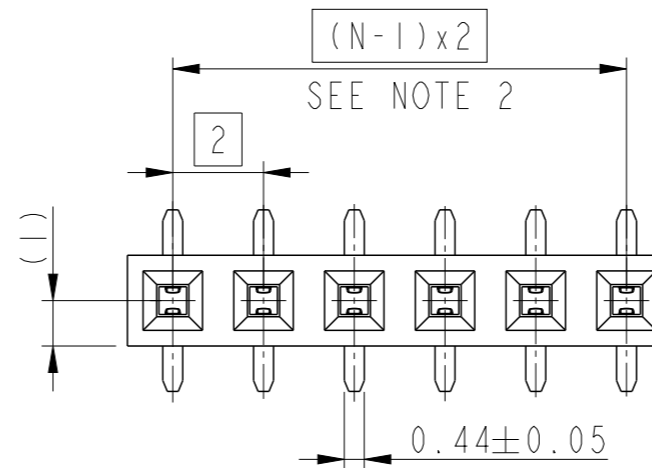
2- TO DETERMINE DIMENSIONS :
 N = NUMBER OF POSITIONS PER ROW
 EXAMPLE : 8 POS N x 2 = 16mm
 UP TO N = 12 TOLERANCE : 0
 FROM N = 13 TOLERANCE : 0.05
 -0.10
 -0.10

3 - RoHS COMPATIBLE PRODUCT SPECIFICATIONS
 a - PLATING :
 "LF" MEANS THE PRODUCT IS LEAD-FREE, 2μm MINIMUM MATTE
 TIN OVER 1.27μm MINIMUM NICKEL UNDERPLATE
 b - MANUFACTURING PROCESS COMPATIBILITY
 THE HOUSING WILL WITHSTAND EXPOSURE TO 260°C PEAK
 TEMPERATURE FOR 30 SECONDS MAX IN A CONVECTION, INFRA-RED
 OR VAPOR PHASE OR REFLOW OVEN

c - LABELLING :
 MEETS PACKAGING SPECS AS PER GS-14-920
 d - LEGAL STATEMENT : SEE GS-47-0004



RECOMMENDED PAD LAYOUT



PRELIMINARY

spec ref	-	dr	Cyril Jeune	2014/12/02	projection	mm	size	A3	scale	6:1
tolerance std	ISO 406 ISO 1101	eng	Benoit Vernier	2015/11/16			ecn no	-	rel level	Preliminary
surface	ISO 1302	chr	-	-			product family	-	rel level	Preliminary
linear	0.X ± 0.XX ± 0.XXX ±	appr	-	-			dwg no	10131935	rev	2
angular	0° ±	www.fci.com		cat. no.	-	Product - Customer Drw		sheet 1 of 1		

X-ON Electronics

Largest Supplier of Electrical and Electronic Components

Click to view similar products for [Headers & Wire Housings](#) category:

Click to view products by [Amphenol](#) manufacturer:

Other Similar products are found below :

[95000-104TRLF](#) [10135584-644402LF](#) [DF62W-EP2022PCA](#) [95000-106TRLF](#) [DF62W-2022SCA](#) [DF62W-EP2022PC](#) [2203348](#) [DF62W-2022SC](#) [1084018](#) [1029039](#) [1084017](#) [802-10-012-10-002000](#) [1112640](#) [1112639](#) [000-34000](#) [0009482033](#) [0009507031](#) [57102-S06-03LF](#) [57202-S52-04LF](#) [PCN6-15S-2.5E](#) [0039019024](#) [58102-G61-06LF](#) [582553-1](#) [0009485154](#) [0009508121](#) [0022285053](#) [0050291907](#) [018731A](#) [LY20-4P-DT1-P1E-BR](#) [02.125.8002.8](#) [60101931](#) [60598-1 \(Cut Strip\)](#) [M1625-3R/100](#) [61062-3](#) [61082-181009](#) [636-1427](#) [638009-1](#) [641938-9](#) [641991-4](#) [644168-1](#) [647662-1](#) [65039-019ELF](#) [65817-002LF](#) [65817-015LF](#) [65863-015LF](#) [66207-023LF](#) [67016-026LF](#) [67046-001LF](#) [67095-007LF](#) [67230-005LF](#)