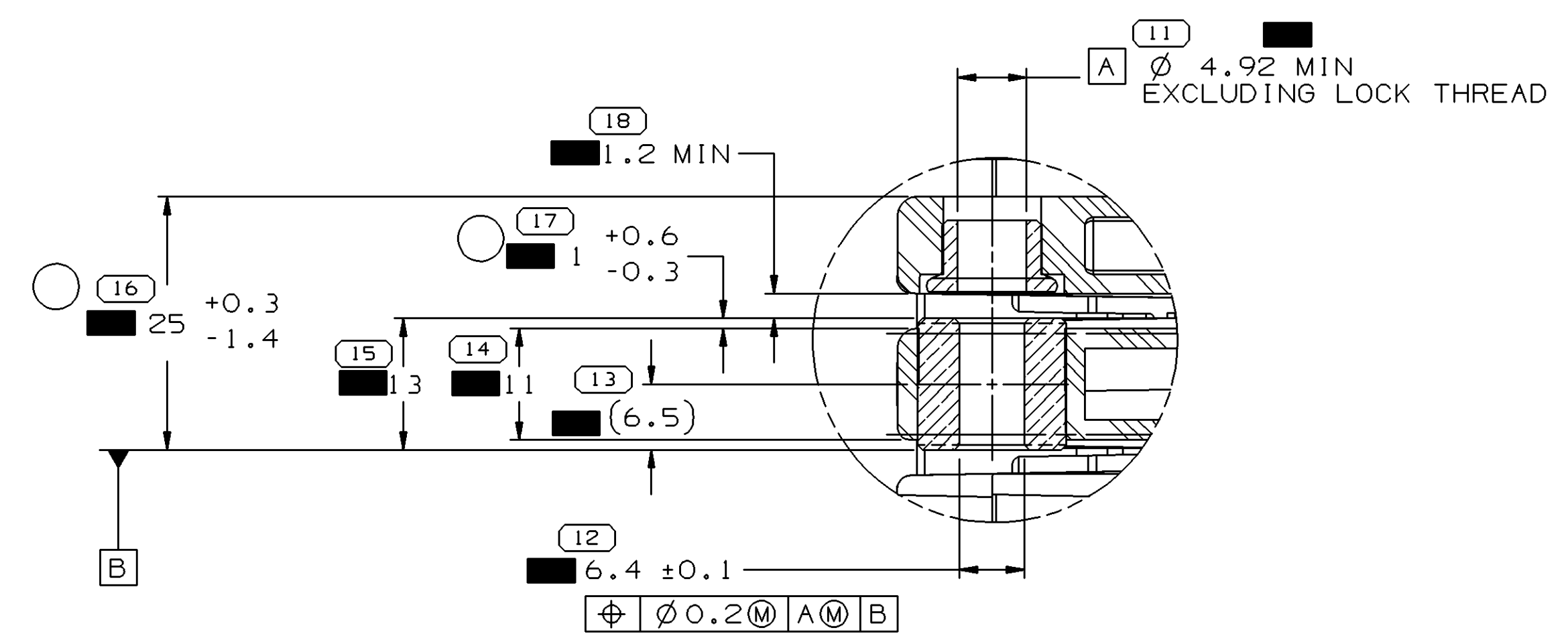


MOUNTING HOLE DETAIL

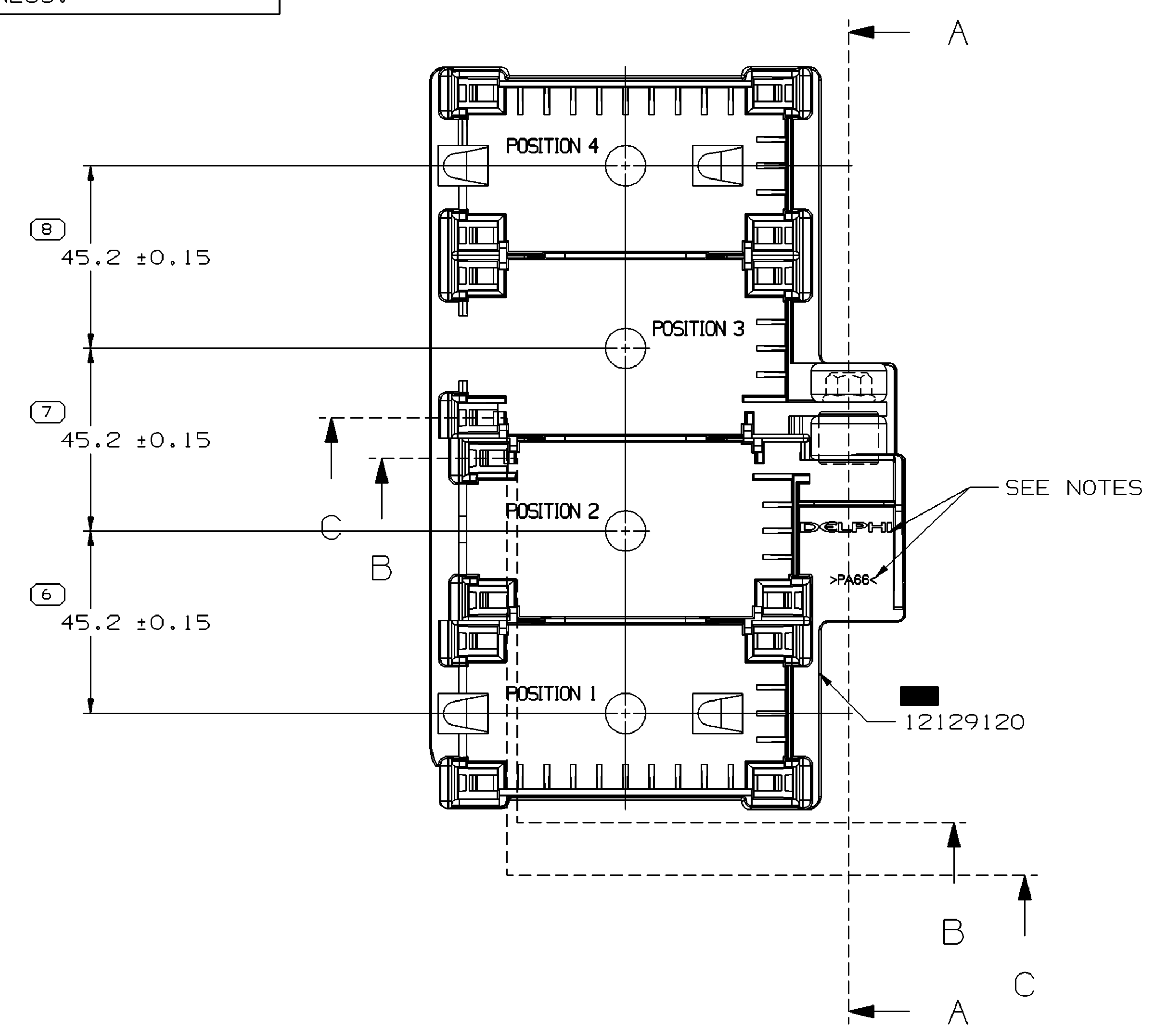
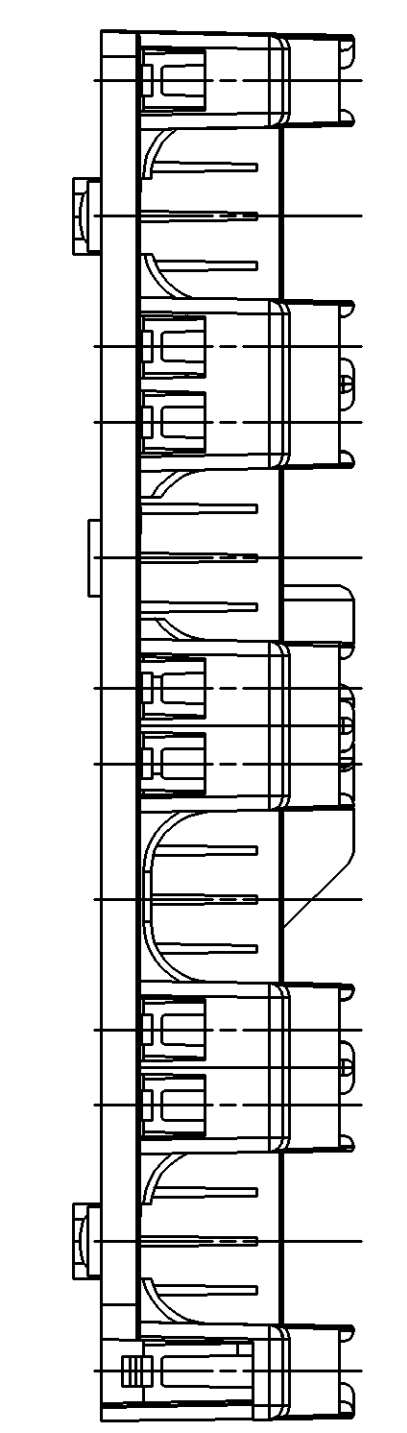
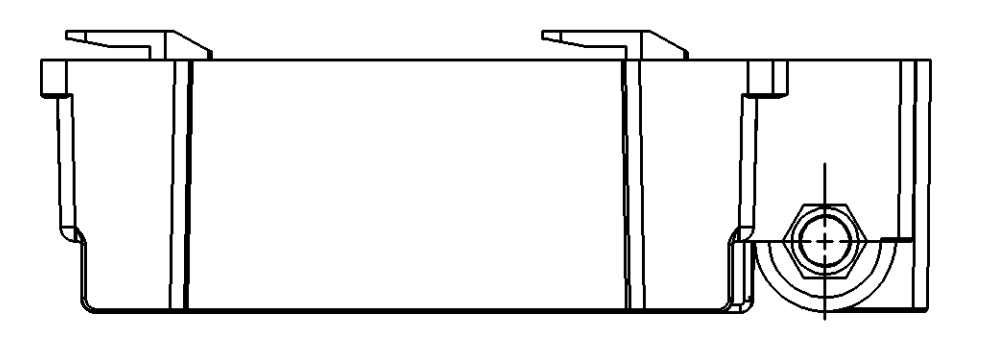
- NOTES
- UNLESS OTHERWISE SPECIFIED AND/OR INDICATED: DIMENSIONS ARE TO FACE OF VIEW SHOWN AND AUTOMATICALLY ROUNDED BY COMPUTER FOR INSPECTION (SEE MATH MODEL FOR PRECISE DIMENSIONS). FOR ALL OTHER DIMENSIONS NOT SHOWN BUT REQUIRED FOR TOOL BUILD, SEE MATH MODEL FOR PRECISE TOOL PATH DATA.
  - 1.43 MAX ALLOWABLE SHEET METAL THICKNESS.

SYMBOL DEFINITION		TOTAL NO OF INSPECTIONS REQUIRED	MISSING SYMBOLS
A	DIMENSION WITHOUT AN INSPECTION REPORT SYMBOL DOES NOT REQUIRE INSPECTION. IT MAY BE CONTROLLED ON THE INDIVIDUAL COMPONENT DRAWING.	25	NO MISSING SYMBOL NUMBER
		LAST NO. USED	23

DATE	STG	REV	W/P	CHK	ZONE	REVISION HISTORY	AUTH	DR	APVD	
18FE03	R	C2	-	-	-	ADDED NOTES (2 PLCS)	236963	RCH	RCH	JH
07MR03	R	C3	-	-	-	ADDED SYMBOLS (13 PLCS) & NOTES (3 PLCS)	238006	RCH	RCH	JH
05OC04	R	O3	AD	-	-	REVISED TOLERANCES - 2PLCS; REVISED NOTE 9	259886	ADK	ADK	GD

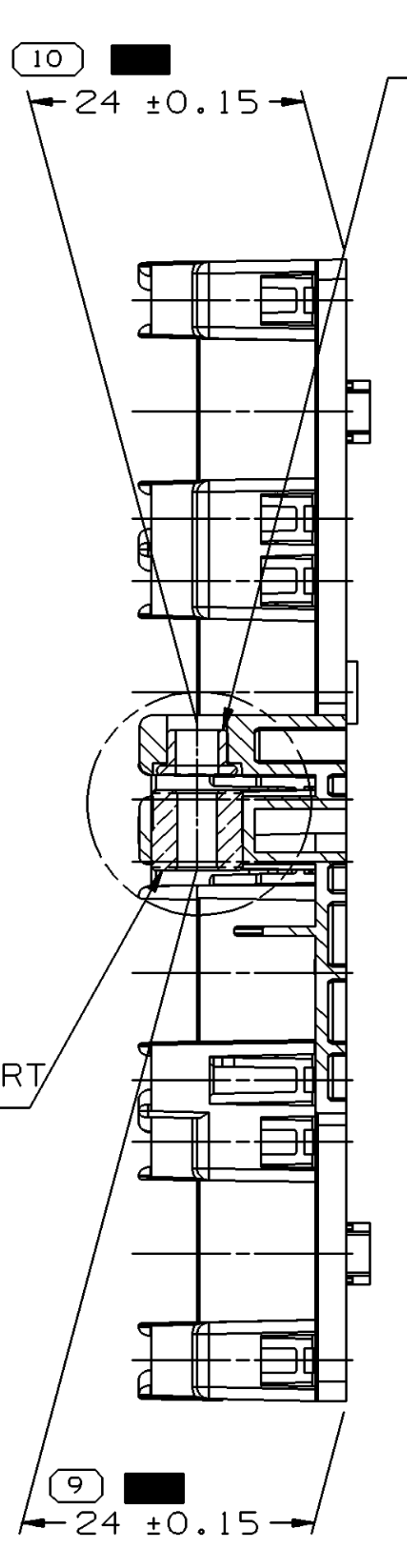


DETAIL D  
SCALE 2:1

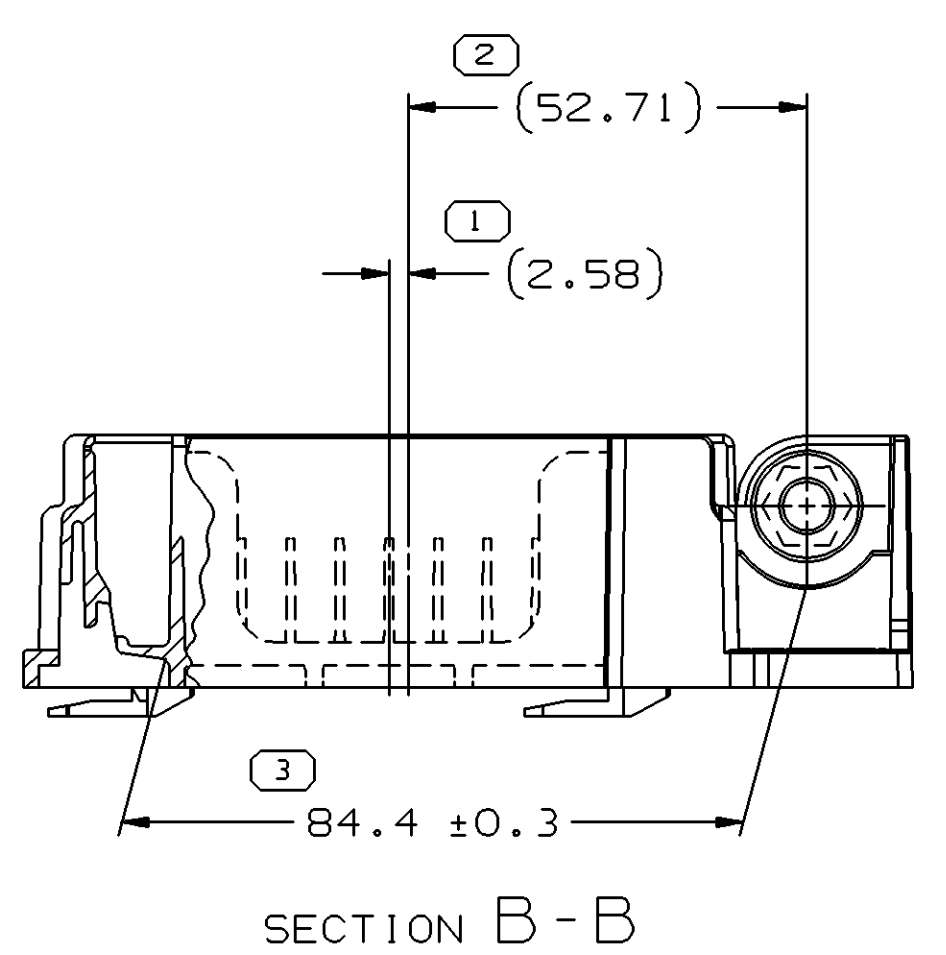
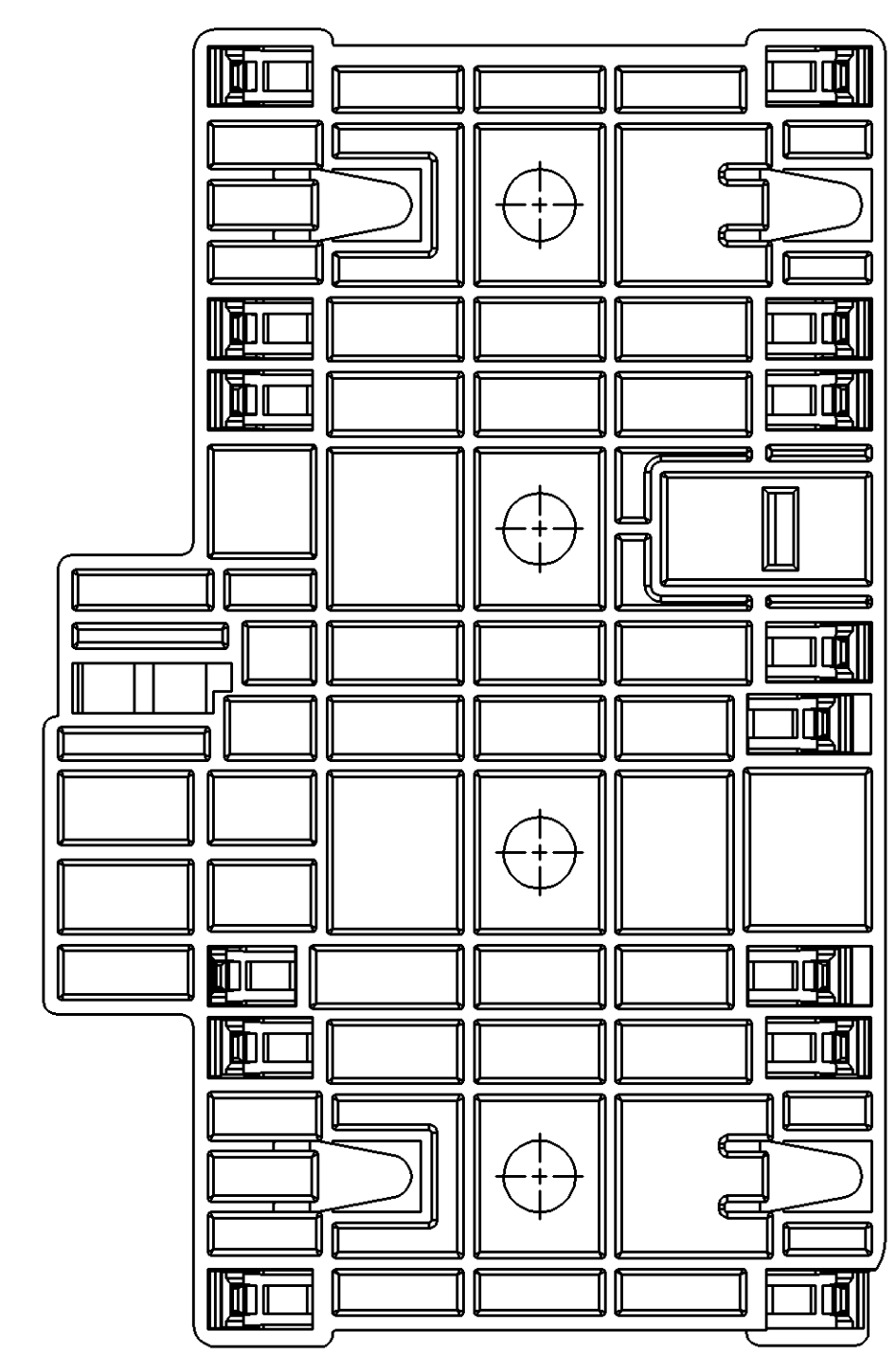


GM 21006316 - FLANGED NUT (M6 X 1)  
PRESS FIT - SEE NOTES

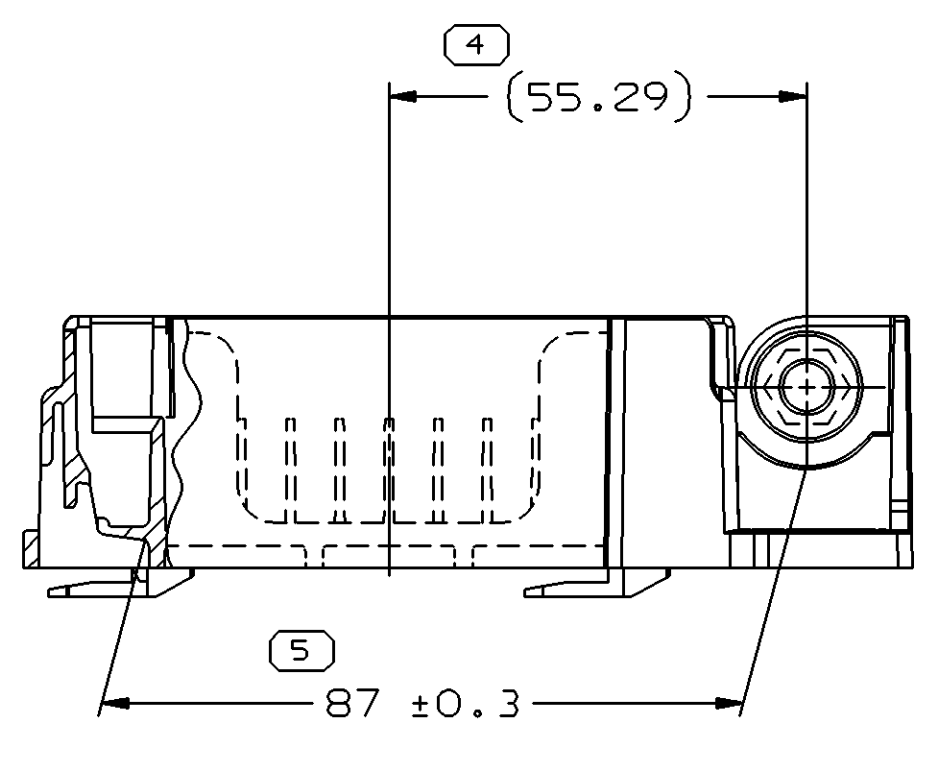
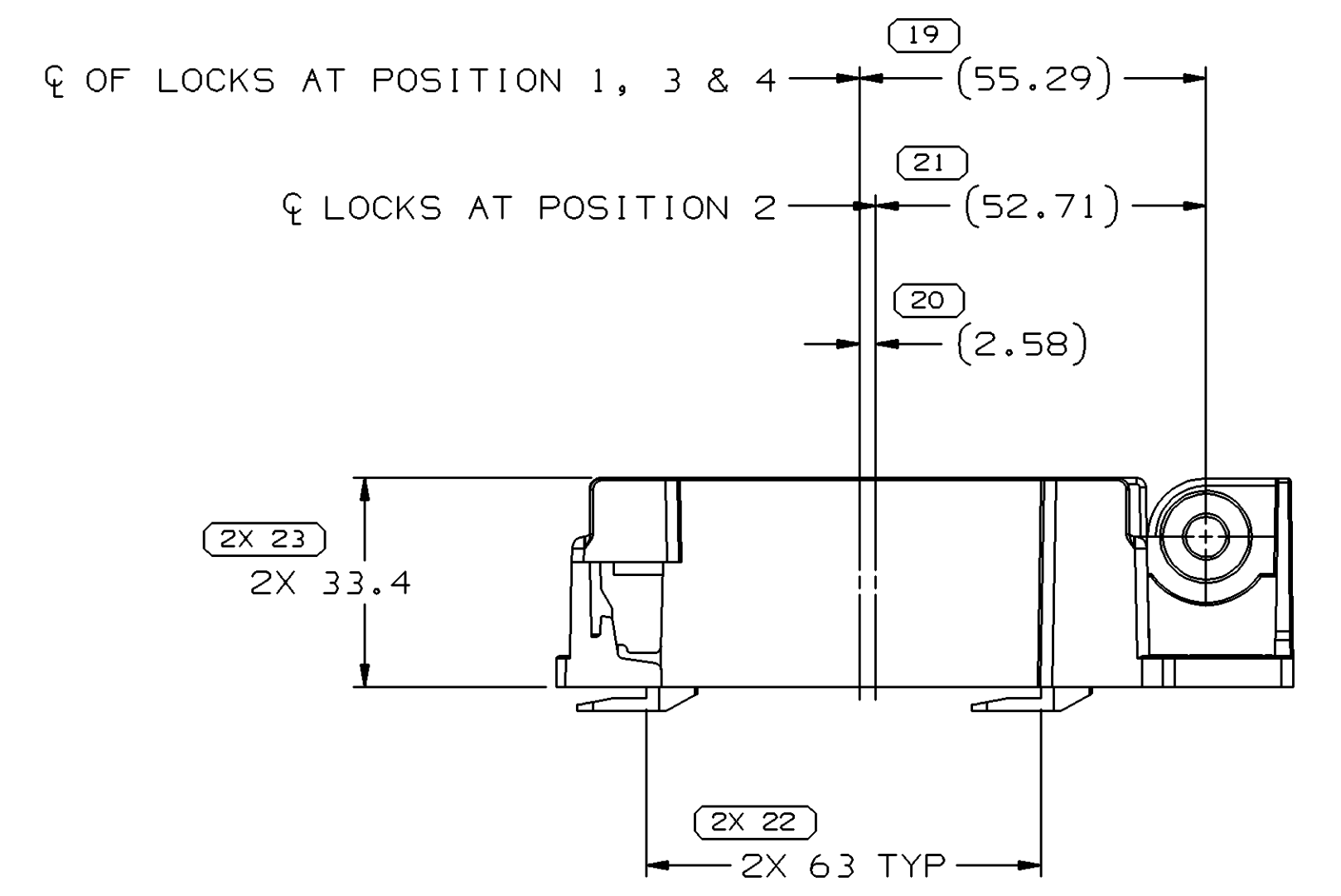
12110248 - SLEEVE INSERT  
PRESS FIT - SEE NOTES



SECTION A-A

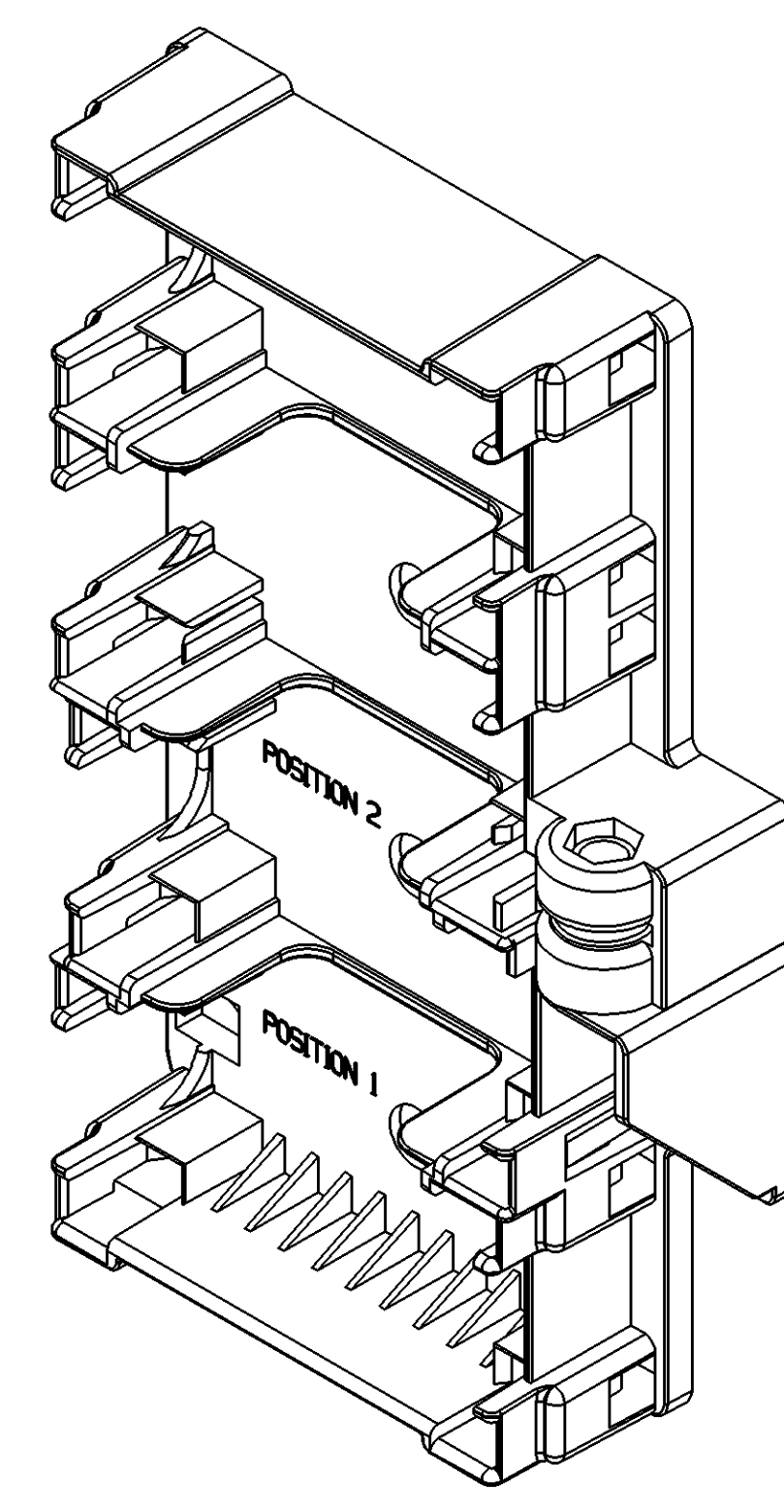


SECTION B-B



SECTION C-C

- NOTES
- UNLESS OTHERWISE SPECIFIED AND/OR INDICATED: DIMENSIONS ARE TO FACE OF VIEW SHOWN AND AUTOMATICALLY ROUNDED BY COMPUTER FOR INSPECTION (SEE MATH MODEL FOR PRECISE DIMENSIONS). FOR ALL OTHER DIMENSIONS NOT SHOWN BUT REQUIRED FOR TOOL BUILD, SEE MATH MODEL FOR PRECISE TOOL PATH DATA.
  - MATERIAL RECYCLING CODE PER ISO 11469. (2.3)X(0.1) RAISED CHARACTERS AS SHOWN TO BE LOCATED ON ANY EXTERIOR SURFACE. OPTIONAL CONSTRUCTION TO BE "PED" OR NO LOGO.
  - SEALING CODE 0 - UNSEALED
  - THIS PART IS NOT CONTROLLED FOR AUTOMATIC FEEDING.
  - THIS PART ACCEPTS THE FOLLOWING COMPONENTS OR EQUIVALENT: MODULAR CONVENIENCE CENTER 12129099 MAXI-FUSE FUSEBLOCK ASSEMBLIES M6 BOLT 11515327
  - NUT MUST WITHSTAND 20NM TORQUE WHEN PULLED OUT TO 1 CLEARANCE FROM SLEEVE INSERT.
  - SLEEVE MUST WITHSTAND 120N PUSH OUT FORCE MINIMUM.
  - NUT MUST WITHSTAND 60N PUSH OUT FORCE MINIMUM.
  - ASSEMBLE BOLT TO INSERT USING 8 ±3NM OF TORQUE
  - (2.3)X(0.1) RAISED DELPHI CORPORATE BRAND TO BE LOCATED ON ANY EXTERIOR SURFACE, PREFERABLY VISIBLE AT FINAL ASSEMBLY. OPTIONAL CONSTRUCTION TO BE "PED" OR NO LOGO.
  - WHEN ONLY ONE MAXI-FUSE MODULE IS USED, IT MUST BE LOCATED IN POSITION 3.
  - PLUG DEVICES INTO CONVENIENCE CENTERS BEFORE LOCKING CONVENIENCE CENTERS INTO THE BASE
  - DIMENSIONS NOT INDICATED BY "■" DO NOT REQUIRE INSPECTION AND ARE FOR REFERENCE ON THIS DRAWING. THESE DIMENSIONS MAY BE CONTROLLED ON THE INDIVIDUAL COMPONENT DRAWING



DIMENSIONAL RANGE (MM)		CHART LET	THIRD ANGLE PROJECTION		DO NOT SCALE	
FROM	TO		USE MATH DATA		USE MATH DATA	
0	20	1	USE MATH DATA		USE MATH DATA	
20	30	2	USE MATH DATA		USE MATH DATA	
30	50	3	USE MATH DATA		USE MATH DATA	
50	100	4	USE MATH DATA		USE MATH DATA	
100	150	5	USE MATH DATA		USE MATH DATA	
150	200	6	USE MATH DATA		USE MATH DATA	
200	250	7	USE MATH DATA		USE MATH DATA	
250	300	8	USE MATH DATA		USE MATH DATA	
300	400	9	USE MATH DATA		USE MATH DATA	
TOLERANCE UNLESS OTHERWISE SPECIFIED						
±0.15	±0.2	±0.3	±0.4	±0.5	±0.6	±0.8
ANGULAR TOLERANCE 12°						

**DELPHI**  
DELPHI PACKARD ELECTRIC SYSTEMS  
WARREN, OH

DR	DATE
APVD1 TOM NADASKY	30JA92
APVD2 J.P. LITTLEFIELD	27MR92
APVD3 J.P. LITTLEFIELD	27MR92
APVD4	
APVD5	

UNLESS OTHERWISE SPECIFIED  
THIS DOCUMENT IS IN ACCORDANCE WITH ASME Y14.5M-1994  
AS AMENDED BY THE 2003 DIMENSIONING AND TOLERANCING ADDENDUM - 1997. ALL GEOMETRIC TOLERANCES AND RELATED SURFACE PROPERTIES SHALL BE PERFORMED IN ACCORDANCE WITH THE 2003 DIMENSIONING AND TOLERANCING ADDENDUM - 1997. UNLESS OTHERWISE SPECIFIED, DIMENSIONS SHALL BE IN MILLIMETERS.  
ALL DIMENSIONS ARE IN MILLIMETERS.

DRAWING NAME  
ASM MISC MODULE BLK W184.00 H117.70

DRAWING NUMBER  
12129121

SIZE	SCALE	FRAME NO	SHEET NO	STG	REV	W/P
A0	1:1	1	1	1	1	03

## X-ON Electronics

Largest Supplier of Electrical and Electronic Components

*Click to view similar products for [Automotive Connectors](#) category:*

*Click to view products by [Delphi](#) manufacturer:*

Other Similar products are found below :

[003-018-000](#) [600858](#) [60403001](#) [60993906-B](#) [60993913-B](#) [629515004020001](#) [M902-2131](#) [M902-2161](#) [M902-2344](#) [72.330.1035.1](#)  
[73.353.4028.0](#) [F118010](#) [F119300-B](#) [F132210](#) [F132210-B](#) [F166900](#) [F180100](#) [F258300](#) [F258300-B](#) [F294300-B](#) [F339100](#) [F339700](#) [F358300-](#)  
[B](#) [F374110](#) [F407400](#) [F412210](#) [F427600](#) [F444110](#) [F487000](#) [F495100-B](#) [F500900-B](#) [F509500B-B](#) [770444-1](#) [776880-1](#) [827153-1](#) [881735-1](#)  
[8N1515-32-24P](#) [9-1326727-8](#) [9-1326729-8](#) [925467-1](#) [925474-1](#) [928905-1](#) [936398-2](#) [964562-1](#) [964562-4](#) [964731-2](#) [965051-1](#) [968782-1](#)  
[GT17SA-8DS-HU](#) [GT17VS-10DP-5.2CF](#)