

## Features

- Supports 2nd/3rd Generation Intel® Core™ i7/i5/i3 / Pentium® / Celeron® processors, up to 3.4GHz
- 2x DDR3 DIMM, Max. 16GB
- iSMART - for EuP/ErP power saving, auto-scheduler and power resume
- Intel® processor integrated graphics, supports HDMI, DVI-D and VGA
- Dual Gigabit LAN
- 8x USB 2.0, 2x USB 3.0, 4x COM, 3x SATA II
- 1x PCI-E(x16), 1x Mini PCI-E(x1)
- Watchdog timer, Digital I/O

## System

|                 |  |
|-----------------|--|
| CPU             | LGA1155 for 2nd/3rd Generation Intel® Core™ i7/i5 /i3/ Pentium®/ Celeron® processors, up to 3.4GHz |
| System Memory   | 2x DDR3 DIMM, Max. 16GB (Non-ECC)  |
| System Chipset  | Intel® H61 PCH   |
| BIOS            | AMI BIOS   |
| Watchdog Timer  | 256 levels   |
| SSD             | 1x mSATA via Mini PCI-E  |
| H/W Monitor     | Yes  |
| Expansion Slots | 1x PCI-E(x16)<br>1x Mini PCI-E(x1) - w/ USB signal (full-size)                                     |

## Graphics

|                   |   |
|-------------------|---|
| VGA Controller    | Intel® Core™ i7/i5/i3/ Pentium®/ Celeron® processors integrated |
| VGA Memory        | Max. Shared Memory - 1024 MB                                    |
| Display Interface | Supports HDMI, DVI-D and VGA                                    |

## LAN

|            |                                 |
|------------|---------------------------------|
| Controller | 2x Realtek RTL8111E Gigabit LAN |
| Connector  | RJ-45 on board                  |

## Multi I/O

|             |  |
|-------------|--|
| I/O Chipset | Fintek F81846AD-I<br>3x RS232, 1x RS232/422/485, 3x SATA II                      |
| USB         | 4 ports on board, 4 ports via pin-header (USB 2.0)<br>2 ports on board (USB 3.0) |
| Audio       | Intel® H61 PCH built-in HD audio + Realtek ALC892 codec                          |
| Others      | Digital I/O(4-in/4-out), iSMART  |

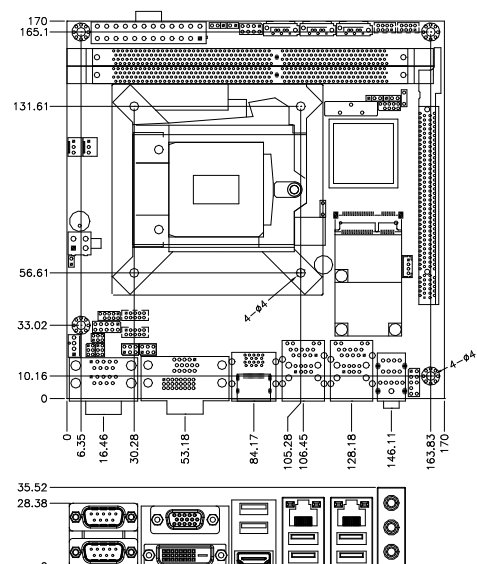
## Mechanical and Environmental

|                        |  |
|------------------------|--|
| Dimensions             | 170mm x 170mm (6.7" x 6.7")  |
| Max. Power Requirement | Intel® Core™ i7-2600 3.40GHz<br>w/ 2x 2GB DDR3-1333<br>+3.3V: 1.18A +5V: 2.37A<br>+12V: 1.29A +5Vsb: 0.39A |
| Operating Temperature  | 0°C~60°C (32°F~140°F)  |
| Storage Temperature    | -20°C~80°C (-4°F~176°F)  |
| Relative Humidity      | 10%~90% (non-condensing)   |

## Ordering Information

|        |   |
|--------|---|
| MI961F | LGA1155 H61 Mini-ITX motherboard with HDMI, VGA and DVI-D, Dual Gigabit LAN, 3x SATA II, 1x PCI-E(16x), 1x Mini PCI-E, iSMART |
|--------|---|

## Dimensions Drawing



## X-ON Electronics

Largest Supplier of Electrical and Electronic Components

*Click to view similar products for [Single Board Computers](#) category:*

*Click to view products by [Ibase](#) manufacturer:*

Other Similar products are found below :

[MANO882VPGGA-H81](#) [SSD3200W-S-SLC-INN](#) [AmITX-SL-G-Q170](#) [IB100](#) [MVME61006E-2173R](#) [20-101-0738](#) [PCE-4128G2-00A1E](#)  
[RSB-4220CS-MCA1E](#) [SHB230DGGA-RC](#) [IB909AF-5650](#) [PICO841VGA-E3827](#) [IMB210VGGA](#) [MI981AF](#) [RSB-4221CS-MCA1E](#) [PCE-](#)  
[9228G2I-00A1E](#) [IB915F-3955](#) [IB909F-5010](#) [MI958F-16C](#) [Nitrogen7](#) [UPS-P-8G-64GB-PACK](#) [S2600WFT](#) [IB915AF-6300](#) [S2600STB](#)  
[BBS2600BPS](#) [IB915F-6100](#) [Nit6QP\\_MAX](#) [MI990VF-X28-E](#) [MI990VF-6820](#) [BANANA PI BPI-M4](#) [BLKNUC7I3DNHNC1978015](#)  
[BLKNUC7I5DNK1E 960791](#) [IOT-LS1012A-OXALIS](#) [NITX-300-ET-DVI](#) [94AC6633](#) [A33-OLINUXINO-N8G](#) [A64-OLINUXINO-](#)  
[1GE16GW](#) [A20-SOM-E16GS16M](#) [A20-SOM204-1G-M](#) [EMB-APL1-A10-3350-F1-LV](#) [PICO-APL1-A10-F001](#) [PICO-APL4-A10-F003](#)  
[ODYSSEY - STM32MP157C BOARD WITH SOM](#) [BEAGLEBONE GREEN GATEWAY DEV BOARD](#) [ODYSSEY - X86J4105864 8GB](#)  
[RAM 64GB EMMC](#) [ODYSSEY -X86J4105864 8GB/64GB ENTERPRISE](#) [VISIONDK-STM32MP1 V.1.0](#) [VISIONDK-6ULL V.2.0](#)  
[VISIONDK-8MMINI V.1.0](#) [VISIONDK-RT](#) [VISIONSTK-STM32MP1 V.1.0](#)