



Model ESP906CL

Vlinx Ethernet Serial Server

Ethernet Enable Any Serial Device

Now you can Ethernet enable any serial device—even your legacy digital current loops. Use B&B's Vlinx Serial Server technology to put your serial ports to work for you. Imagine the ability to communicate with every piece of equipment from any networked PC. Eliminate site visits just to make a minor configuration changes. Reduce service calls and increase productivity by knowing what your equipment is doing before you get a trouble-report. Spend more time doing the work you are paid to do instead of chasing down nuisance problems in remotely located equipment.

Do you have equipment with RS-232/422/485 or current loop interfaces that you have left unconnected? Many new and existing installations have equipment with unused ports for programming, monitoring or diagnostics. With B&B's Vlinx Serial Servers, you can put all those ports to work for you.



Simply connect the Vlinx server to the equipment's serial port, and connect the Vlinx Ethernet port to your LAN. Your equipment is now online. It will appear as a local COM port on any networked PC running our Virtual Serial Port software. No software customization required, just run the appropriate software for your equipment.

Industry Applications

B&B Electronics' new Model ESP906CL integrates the benefits of Ethernet communications with existing serial devices by offering four configurable RS-232/422/485 serial ports and two digital current loop ports. The Ethernet connection will auto select 10BaseT or 100BaseTX. The ESP906CL provides a Windows host control over serial devices located virtually anywhere on a TCP/IP or UDP/IP Ethernet connection. It even gives authorized users control over the connected serial device or the ESP906CL Menu from anywhere outside the LAN.

Operational Modes

Virtual COM port
TCP/IP socket and tunneling
UDP/IP socket and tunneling

Features

DIN rail or panel mount
Supports 10/100 Mbps Ethernet
Supports RS-232, RS-422, and RS-485 and digital current loop interfaces
Remotely upgrade or restore to default settings
Manual and remote management of console mode
Supports LAN and WAN communications
Supports multiple TCP client connections
Management access password protected.

Product Specifications

Serial Memory: 8K bytes per port
Serial Connections: six – RJ-45
Ethernet Connection: RJ-45



www.bb-elec.com orders@bb-elec.com support@bb-elec.com

International Office: 707 Dayton Road PO Box 1040 Ottawa, IL 61350 USA 815-433-5100 Fax 433-5104
European Office: Westlink Commercial Park Oranmore Co. Galway Ireland +353 91 792444 Fax +353 91 792445

Interface

Serial Ports 1, 2, 3 & 4: RS-232, RS-422, or RS-485, software selectable
 Current Loop Ports 5 & 6: Two wire active, 34 mA @ 28 VDC max load
 LAN: 10/100 Mbps Auto-detecting – 10 Base T, 100 Base TX
 Supported Signals:
 RS-232: TX, RX, RTS, CTS, DTR, DSR, DCD, GND
 RS-422: TX(A)-, TX(B)+, RX(A)-, RX(B)+, GND
 RS-485: Data(A)-, Data(B)+
 Data Rate: 110 bps to 230.4 kbps
 Protocols: TCP, IP, ARP, DHCP, Telnet, HTTP, UDP, ICMP
 Management: Vlinx Manager for Windows 98, ME, 2000, 2003 server, XP, Vista, NT4.0, Serial Console, Telnet, Web server, Firmware upgradeable

Power & Environment

Power Requirements: 3 output power supply (included)
 36 VDC1 @ 35 mA
 36 VDC2 @ 35 mA
 5 VDC @ 412 mA
 Operating Temperature: 0 to 40 °C
 Storage Temperature: -20 to 85 °C
 Dimensions: 4.48 x 7.3 x 1.1 in (11.4 x 18.5 x 2.9 cm)
 Humidity: 0 - 90% non-condensing
 Approvals: FCC, CE

ESP Manager Software

Vlinx ESP Manager allows easy access to the serial server to configure the server and ports, upgrade server firmware and monitor port status and activity. When ESP Manager opens it will search for and display all ESP90x serial servers on the network.

The Monitor Port feature allows you to use any PC on the LAN/WAN to actively view and troubleshoot the communications status. It shows when there is a client connection to the server and the client IP address. It displays the number of bytes transmitted and received as well as the status of the hardware handshaking lines.

Web Server

ESP906CL serial servers can be accessed and configured from any web browser (such as Internet Explorer) on the LAN/WAN. This allows you to remotely manage the software and your serial device. It also allows off-site troubleshooting.

Heartbeat Connection

Ensures Reliable Communications

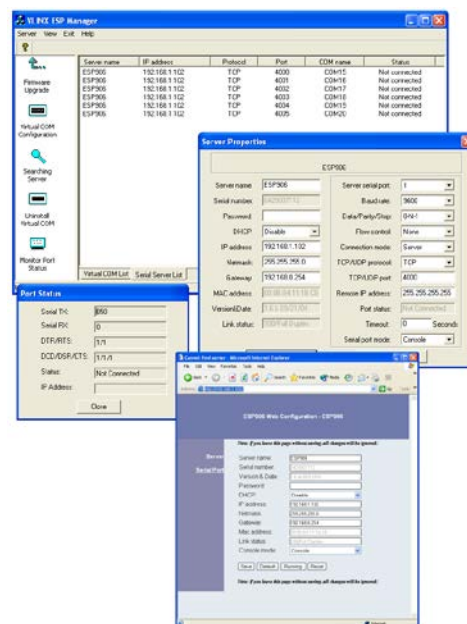
ESP906CL serial servers provide automatic resumption of the TCP data connection in case of a power failure or loss of an Ethernet connection on either the client or server. Once the Heartbeat connection is established the server sends a signal to the client every five seconds. If the signal is not received, the serial server will attempt to reconnect the TCP data connection every five seconds until communication is established again.

System Integrators and OEMs

Call and ask how B&B Electronics can best fill your product requirements.

Accessories

DRAD35..... DIN-Rail Adapter Clips



X-ON Electronics

Largest Supplier of Electrical and Electronic Components

Click to view similar products for [Ethernet Modules](#) category:

Click to view products by [B+B SmartWorx](#) manufacturer:

Other Similar products are found below :

[1026937](#) [1026932](#) [M38510/00302BCA](#) [70001610](#) [70001634](#) [850-15633](#) [PD-AS-951/12-24](#) [GX-OC1601](#) [1402407](#) [I210T1](#) [I350T4V2](#)
[SBL2EX](#) [SL170115](#) [GX-OD1612](#) [CPTS-4R4E-R](#) [TDKEZW3](#) [I350F2](#) [I350F2BLK](#) [I350T2V2](#) [V23993-USB1029A](#) [100-POE4](#) [105FX-ST](#)
[105TX-SL](#) [SEG305-T](#) [70001992](#) [70001993](#) [708TX](#) [854-19720](#) [I350T4V2BLK](#) [I350T2V2BLK](#) [I210T1BLK](#) [PD-OUT/MBK/S](#) [SX-BR-](#)
[4600WAN2-US](#) [W4S105C](#) [X710DA4FHBLK](#) [I350T2V2BLK](#) [936714](#) [GX-ID1611](#) [3G8F7-DRM21-E](#) [EKI-2525I-BE](#)
[BCM53426A0KFSBG](#) [PCM-24R2GL-AE](#) [96NIC-1G4P-PE-IN2](#) [0.70001777](#) [BCM53402A0KFSBG](#) [105FXE-SC-15-POE](#) [PD-OUT/MBK/G](#)
[856-15410](#) [X520QDA1](#) [BCM84794A1KFSBG](#) [X520DA2OCP](#)