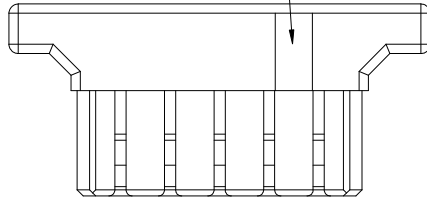
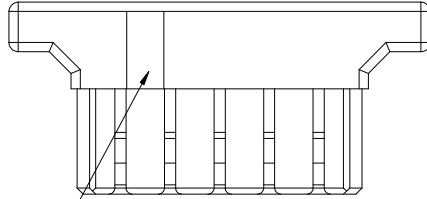
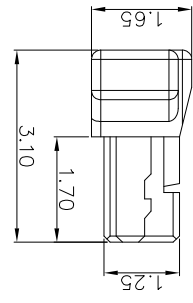
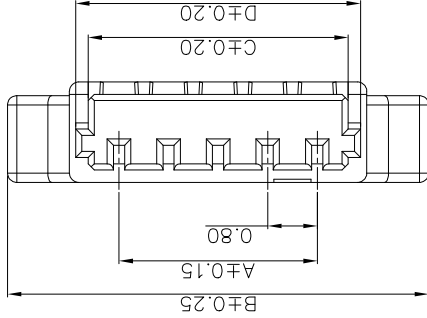
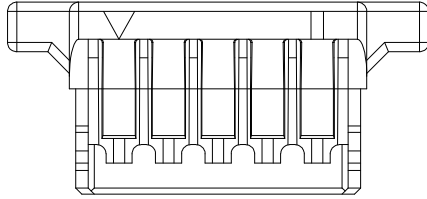
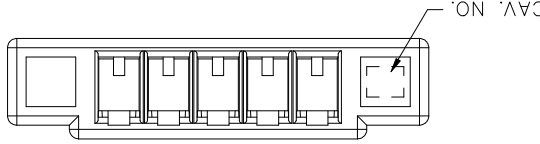


PIN	DIM.(mm)	PIN	DIM.(mm)
02	4.40	12	8.80
03	1.60	13	9.60
04	2.40	14	10.40
05	3.20	15	11.20
06	4.00	16	12.00
07	4.80	17	12.80
08	5.60	18	13.60
09	6.40	19	14.40
10	7.20	20	15.20
11	8.00		16.00
			16.60

POS. AND DIMENSIONS:



The gate concave might at left or right side

- NOTES:
1. MATERIAL(HALOGEN FREE): LCP, UL94V-0 (CREAM)
 2. USE WITH: 10145493 CRIMP TERMINAL
 3. MATE WITH HEADER: 10144041, 10144042
 4. PRODUCT SPEC: GS-12-1444
 5. PACKAGING SPEC: GS-14-2616
 6. ORDERING CODE: 10145492-XXLF

PIN NO. 02~20

mat'l. code	surface	tolerance	projection	product family
ISO 1302	ISO 406 ISO 1101	ISO 406 ISO 1101	MINITEK	0.8MM RECE HOUSING
tolerances unless otherwise specified	tolerances unless otherwise specified	tolerances unless otherwise specified		
dr	engr	chr	ppd	
TONY LENG 2017-09-13	TONY LENG 2017-09-13	ZK HU 2017-09-13	TM YAO 2017-09-13	
sheet revision A	sheet 1	index		

type	Product Customer Drawing
dwg no	10145492
sheet 1 of 1 size	A3

X-ON Electronics

Largest Supplier of Electrical and Electronic Components

Click to view similar products for [Headers & Wire Housings](#) category:

Click to view products by [Amphenol](#) manufacturer:

Other Similar products are found below :

[95000-104TRLF](#) [10135584-644402LF](#) [DF62W-EP2022PCA](#) [95000-106TRLF](#) [DF62W-2022SCA](#) [DF62W-EP2022PC](#) [2203348](#) [DF62W-2022SC](#) [1084018](#) [1029039](#) [1084017](#) [802-10-012-10-002000](#) [1112640](#) [1112639](#) [000-34000](#) [0009482033](#) [0009507031](#) [57102-S06-03LF](#) [57202-S52-04LF](#) [PCN6-15S-2.5E](#) [0039019024](#) [58102-G61-06LF](#) [582553-1](#) [0009485154](#) [0009508121](#) [0022285053](#) [0050291907](#) [018731A](#) [LY20-4P-DT1-P1E-BR](#) [02.125.8002.8](#) [60101931](#) [60598-1 \(Cut Strip\)](#) [M1625-3R/100](#) [61062-3](#) [61082-181009](#) [636-1427](#) [638009-1](#) [641938-9](#) [641991-4](#) [644168-1](#) [647662-1](#) [65039-019ELF](#) [65817-002LF](#) [65817-015LF](#) [65863-015LF](#) [66207-023LF](#) [67016-026LF](#) [67046-001LF](#) [67095-007LF](#) [67230-005LF](#)