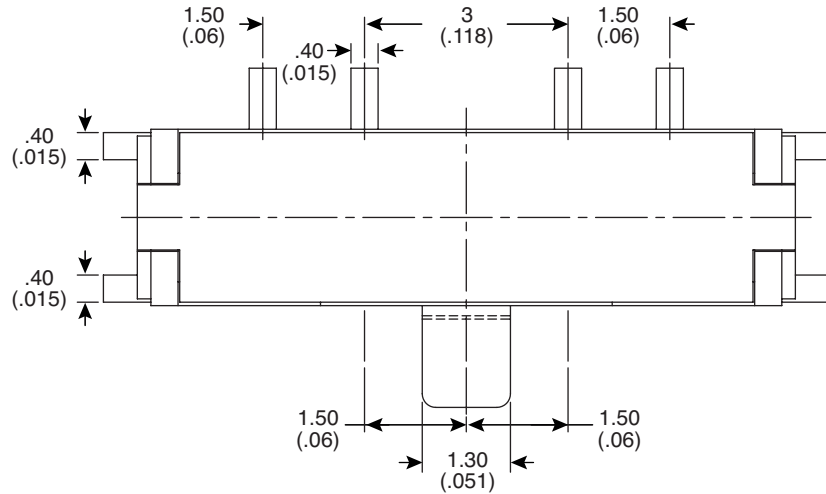
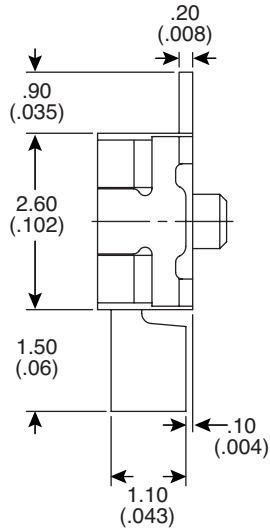
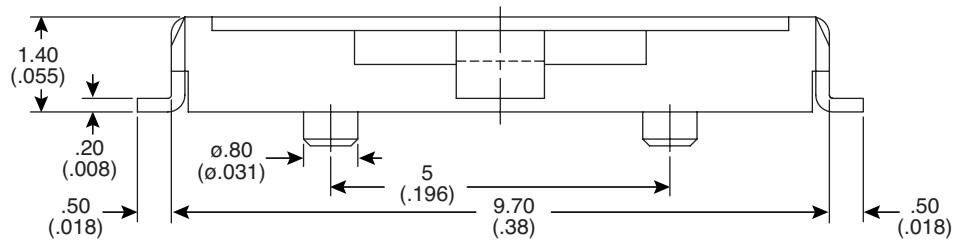
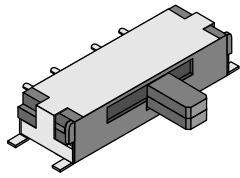
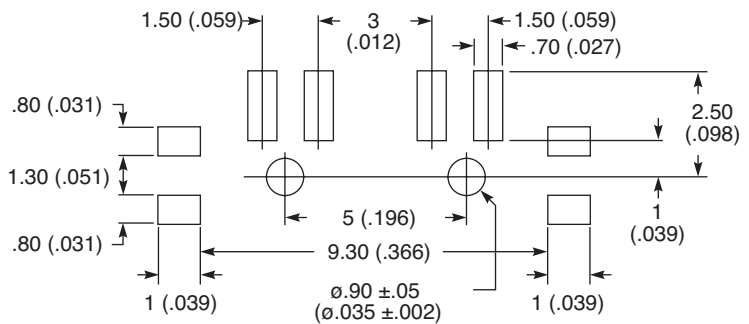
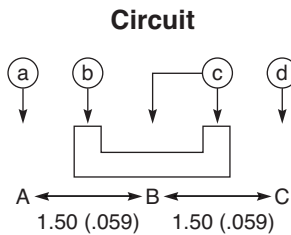


Dimensions: mm (In.)



PCB Layout



Electrical Specifications:

- Rating: Non-Switching-300mA/4VDC
Switching-25mA/24VDC
- Contact Resistance: 70mΩ max.
- Insulation Resistance: 100MΩ min.
- Dielectric Strength: 100VAC for 1 min.

Mechanical Specifications:

- Operating Temperature: -20°C~+70°C
- Storage Temperature: -40°C~+85°C
- Tolerance: ±0.20mm

Note:

- RoHS Compliant and Process Compatible with 260° solder

Miniature Slide Switch (SMT)
103-5041-EV



X-ON Electronics

Authorized Distributor

Click to view similar products for [Slide Switches](#) category:

[25536NA](#) [MS22BFG01](#) [MS12LFW01C](#) [600DP1S2M4R](#) [EG2211](#) [ASF2204](#) [2-1825011-5](#)
[SL13B-012BMCO](#) [ES22MCKE](#) [MS12LNW03E](#)