



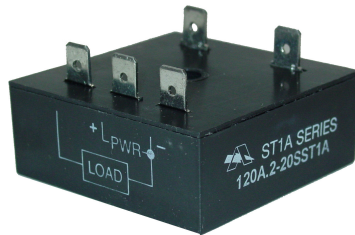
Solving your relay requirements since 1922

Amperite Co.

(800) 752-2329

www.Amperite.com

ST1A Series Solid State Delay-On-Make Timers



- ... 100% solid state circuitry - no moving parts
- ... CMOS digital timing circuitry
- ... Fixed or field adjustable delays from milliseconds to hours
- ... 2 amperes continuous load current (10 amperes available, consult factory)

Timing Mode:

Delay on operate begins upon application of input power. The load is energized at the end of the delay period and remains so until input power is removed.

Timing Diagram:



Contact Information:

Solid state switching device 1 form A; normally open series connection. Continuous current rating 2 amperes. Maximum inrush 20 amperes. Voltage drop 2.5 volts RMS or less @ 2 amperes. (For 10 ampere load current rating consult factory).

Note: Maximum current rating for 110V DC is 2 amperes (heat sink required).

)

Timing Specifications:

Timing: Factory fixed, or 0.1 seconds to 100 hours in any of the ranges below. Timing is set by user supplied resistor or potentiometer. Custom timing available.

Timing ranges:

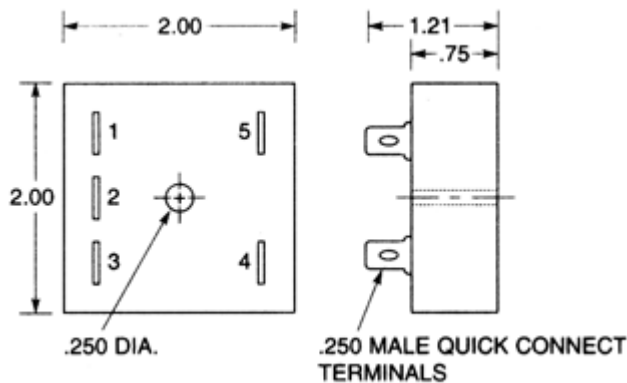
- | | |
|--------------------|--------------------|
| .1 to 10 seconds | 1 to 100 minutes |
| .2 to 20 seconds | 10 to 1000 minutes |
| 1 to 100 seconds | .1 to 10 hours |
| 10 to 1000 seconds | 1 to 100 hours |
| .1 to 10 minutes | |

Timing tolerance: fixed units +/- 10%

Timing repeatability: 2%

Timing cycle interrupt transfer: none

Outline Dimensions:



AC (60 Hz) and DC Input Voltages & Limits

Nominal	Minimum	Maximum
12V	10V	14V
24V	20V	28V
48V	41V	55V



Solving your relay requirements since 1922

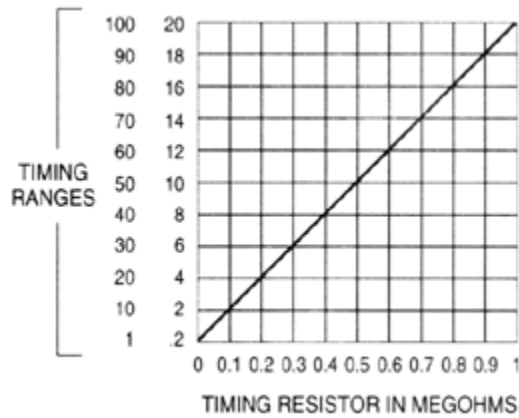
Amperite Co.

(800) 752-2329

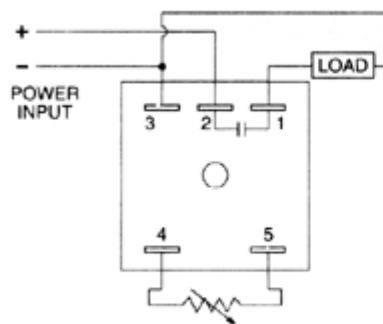
www.Amperite.com

110V	95V	125V
120V	105V	130V
230V	190V	255V

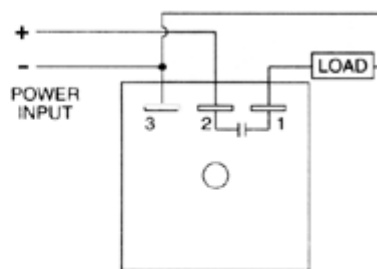
External Resistor Selection:



Wiring Diagrams:



EXTERNAL TIMING RESISTOR
Adjustable Units



Fixed Units

Mechanical Information:

Enclosure 2 X 2 X 3/4 inch black plastic, epoxy sealed. Center hole mounting. Three or five 1/4 inch quick connect male terminals



Solving your relay requirements since 1922

Amperite Co.

(800) 752-2329

www.Amperite.com



Ordering Information:

Definition of a part number for the Amperite ST1A Series Time Delay Relay:

Example:

120 A .1 - 10 M ST1A
↑ ↑ ↑ ↑ ↑ ↑
A B C D E F

A: Denotes nominal input voltage. Voltages available: 12V, 24V, 120V & 230V AC; 12V, 24V, 48V & 110V DC. **Custom voltages are available.**

B: Denotes type of input power required for operation: A = AC - Alternating Current; D = DC - Direct Current.

C & D: Denotes range of adjustability by using an external resistor or potentiometer, where C is the minimum timing and D is the maximum timing. Standard timing span is 100:1. For fixed timing units specify a single number.

E: Denotes unit of time delay: S=seconds; M=minutes; H=hours.

F: Denotes Amperite ST1A Series solid state, delay-on-make timer.



Solving Your Relay Requirements Since 1922

X-ON Electronics

Largest Supplier of Electrical and Electronic Components

Click to view similar products for [amperite manufacturer](#):

Other Similar products are found below :

[5C5T](#) [5TF4](#) [6-4](#) [6C180](#) [6C30](#) [6C30T](#) [6F60](#) [6NO120B](#) [6NO30](#) [6NO60](#) [6NO60T](#) [6NO75](#) [7HTF3](#) [7THF4](#) [9-20](#) [9-4](#) [1-1E](#) [120AP.1-10SDCR10](#) [120AP.1-6SDC](#) [120A.1-10SST2](#) [120AF/ARDF](#) [120AP1-10MDCR10](#) [120AP.1-60CIR](#) [120AP1-60HDC](#) [12C180](#) [12C45](#) [12C612C8](#) [12D1-1023SSWDC](#) [12F30](#) [12NO20](#) [12NO20R20B](#) [12NO60T](#) [12C120T](#) [12C5T](#) [12DF60DFWS](#) [12DSPDTR5SC](#) [12F10T](#) [12NO1012NO75](#) [12NO75T](#) [16-4](#) [17-3](#) [22-4](#) [24-120F90DF](#) [24AP.1-60CI](#) [24DF90D](#) [24DP1-60MDC](#) [24DSWRDC-DIN](#) [26-4A](#)