

MX21 INSTA-MOUNT™ | SERIES

MODULAR INCREMENTAL ROTARY OPTICAL ENCODER



Introduction

By the time you have read this first sentence, you could have installed the model MX21 INSTA-MOUNT™ modular optical encoder. In addition to its quick and easy installation, the MX21 is designed to operate with jitter-free output signals without tight controls on shaft endplay, runout, or perpendicularity. The new INSTA-MOUNT™ encoder is capable of operating within a temperature range of -10° to +70°C, requiring less than 30 milliamps of L.E.D. current, without degradation of output signals and is short circuit protected.

The MX21 is perfectly suited for motor manufacturers and other high volume OEMs. The INSTA-MOUNT™ Series encoder offers 5V TTL compatible quadrature outputs with index and complements as options. Axial shaft movements during operation, of ±0.010", will not adversely affect the output signals. Shaft runouts of 0.005" TIR can also be absorbed by this device without affecting output signal performance.

SPECIFICATIONS

Mechanical

Dimensions	See Figure 1
Weight	2.1 oz. (Approx.)
Moment of Inertia	2.6×10^{-5} oz in sec ²
Bore Size	see "Ordering Options"

Motor Interface

Mount Holes	#4-40 or M3 x 0.5 @ 180° on 1.812" dia. B.C.
Mount Hardware	2 socket head cap screws
Perpendicularity Shaft to Mount	0.002" TIR
Shaft Runout	0.005" max (each 0.0001 degrades accuracy by 0.5 arc minutes)
Shaft Endplay Dynamic or Static	±0.010"
Shaft Finish	16 micro inches or better. End must be chamfered or rounded
Shaft Tolerance	nominal -0.0002"/-0.0007"
Shaft Length	0.56" minimum (remove cover button for motor through-shafts)

Electrical

Code	Incremental
Pulses per revolutions (PPR)	See Ordering Options
Index Pulse Options	MX212: No Index MX213, MX216: U = Ungated Index, G = Gated Index
Supply Voltage	5 volts $\pm 5\%$ @ 80mA max.
Output Format	MX212: Dual channel in quadrature MX213: Dual channel in quadrature with index MX216: Dual channel in quadrature with index and complements
Output Type	MX212 & 213 : square wave TTL. 16mA sink 500 Ω A source. Short circuit protected MX216 : TTL differential line driver (26LS31 or equiv.) should be terminated into a line receiver (26LS32, or equivalent circuit)
Frequency Response	Frequency (kHz) = (RPM X PPR)/60
Rise Time	1.0 μ sec. max.

Environmental

Temperature	Operating: -10°C to +70°C Storage: -40°C to +125°C
--------------------	---

Terminations

Ribbon	28 AWG flat ribbon cable with 10 position connector Berg P/N 65863-165 or equiv. Mates with Berg P/N65863-165 or equiv) (mating connector not provided)
Round Cable	28AWG 8 Conductor shielded cable

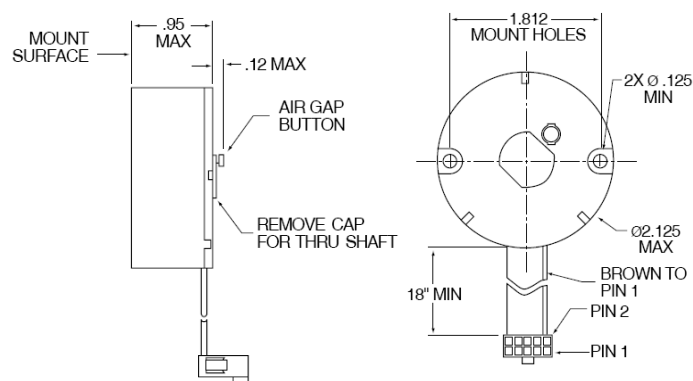
*NOTE: See pinout tables, under "Terminations" section.



DIMENSIONS

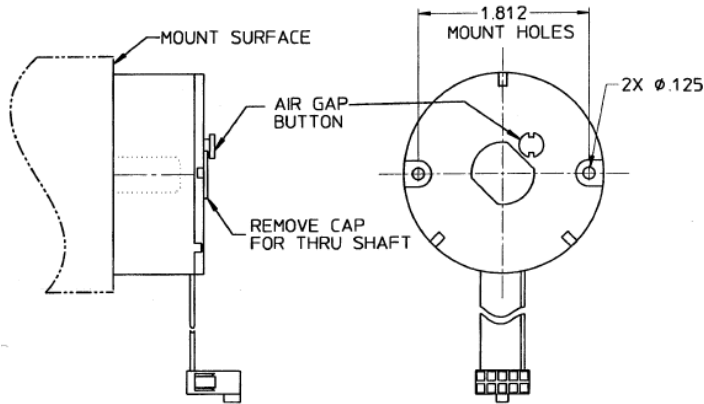
All dimensions are in: inches .xx = ± 0.02 , .xxx = ± 0.005

Fig.1





INSTALLATION INSTRUCTIONS



Preparation

1. Inspect motor interface per MX21 Data Sheet or specification drawing.
2. Motor shaft must be free of burrs & other surface defects.

Installation

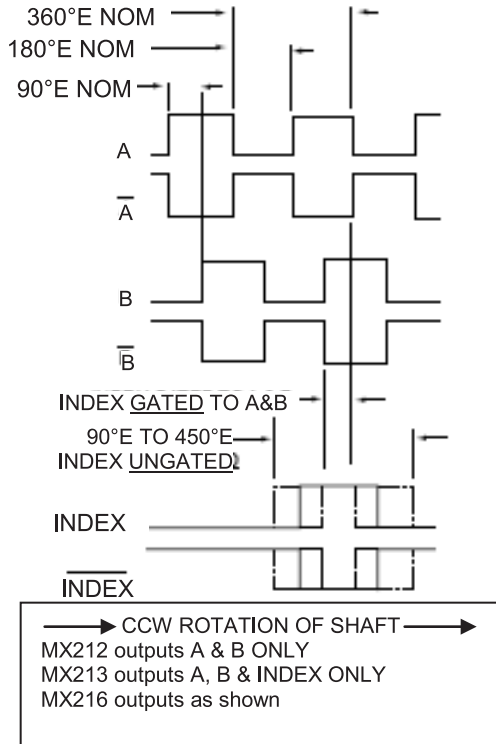
1. Motor shaft should NOT be rotating during initial encoder installation.
2. Hold encoder perpendicular to motor shaft. Guide the encoder onto the motor shaft, pushing encoder STRAIGHT on until it is flush against the mount surface. Do NOT rock side to side.
3. Install two #4-40 mount screws. Do not fully tighten at this point. (Note: A thread sealant should be applied to the screw threads)
4. Rotate the motor shaft (300 RPM, minimum). Press the air-gap button until it bottoms to the top of the encoder momentarily, then release. CAUTION: DO NOT press air-gap button while motor shaft is stationary. Button should only be pressed for one or two seconds while shaft is rotating.
5. Tighten mounting screws fully. (recommended torque is 30 to 40 ounce inches.)
6. This completes the mechanical installation. Proceed with electrical connections as indicated on product data sheet or specification drawing.

Removal

1. Motor shaft may be stationary or rotating up to 1000 RPM during encoder removal.
2. Remove two mounting screws.
3. Grasp encoder firmly and pull STRAIGHT off of the motor shaft. Do NOT rock side to side.



OUTPUT WAVEFORM



TERMINATIONS

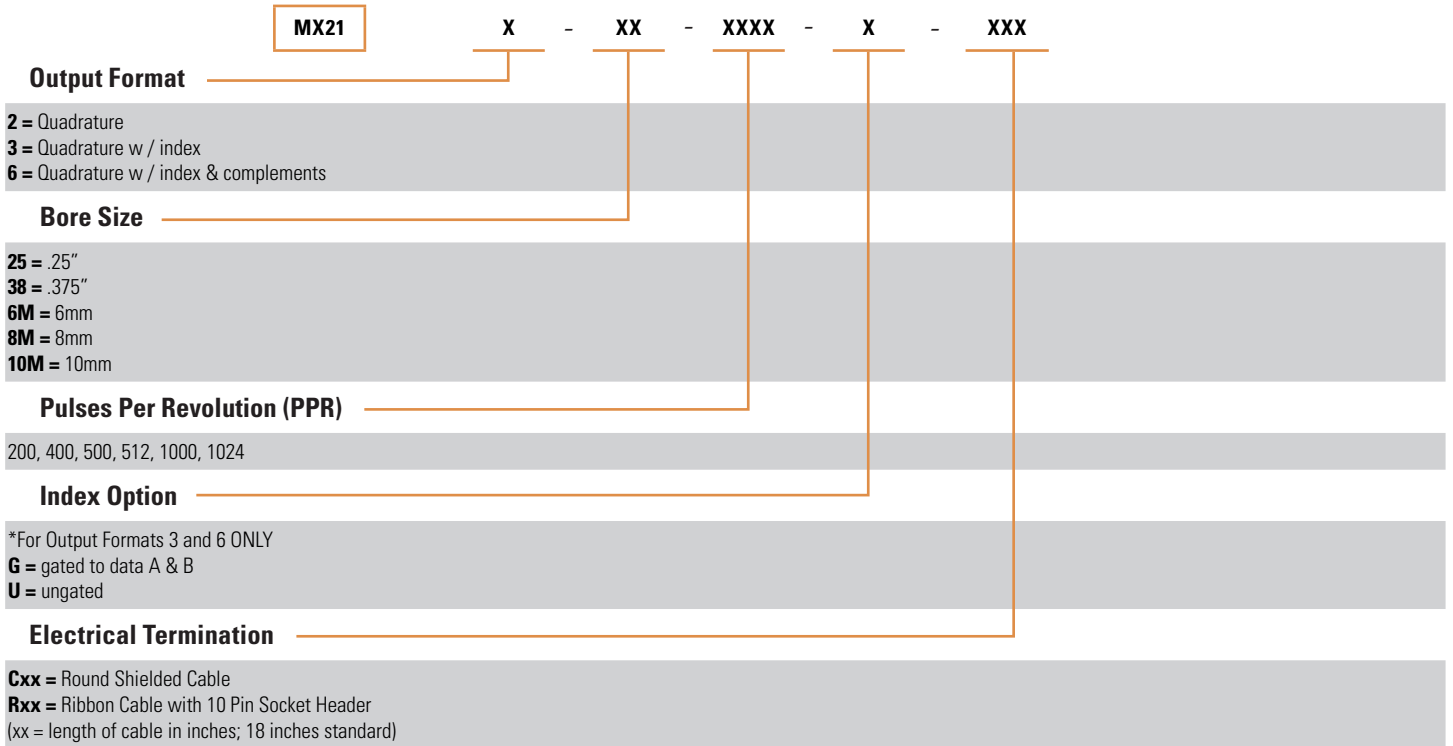
Pinout MX212/213			
PIN #	Signal	PIN #	Signal
1	Channel A	6	NC
2	+5 volts	7	NC
3	Ground	8	Channel B
4	NC	9	NC
5	NC	10	Index (213)

Pinout MX216			
PIN #	Signal	PIN #	Signal
1	NC	6	Channel A
2	+5 volts	7	Channel \bar{B}
3	Ground	8	Channel B
4	NC	9	\bar{INDEX}
5	Channel \bar{A}	10	Index

Color Codes	
Red	+5 volts
Black	Ground
White	A
Green	B
Orange	Index
Blue	\bar{A}
White/Black	\bar{B}
Red/Black	\bar{INDEX}



Use this diagram, working from left to right to construct your model number



Sensata Technologies, Inc. ("Sensata") data sheets are solely intended to assist designers ("Buyers") who are developing systems that incorporate Sensata products (also referred to herein as "components"). Buyer understands and agrees that Buyer remains responsible for using its independent analysis, evaluation and judgment in designing Buyer's systems and products. Sensata data sheets have been created using standard laboratory conditions and engineering practices. Sensata has not conducted any testing other than that specifically described in the published documentation for a particular data sheet. Sensata may make corrections, enhancements, improvements and other changes to its data sheets or components without notice.

Buyers are authorized to use Sensata data sheets with the Sensata component(s) identified in each particular data sheet. HOWEVER, NO OTHER LICENSE, EXPRESS OR IMPLIED, BY ESTOPPEL OR OTHERWISE TO ANY OTHER SENSATA INTELLECTUAL PROPERTY RIGHT, AND NO LICENSE TO ANY THIRD PARTY TECHNOLOGY OR INTELLECTUAL PROPERTY RIGHT, IS GRANTED HEREIN. SENSATA DATA SHEETS ARE PROVIDED "AS IS". SENSATA MAKES NO WARRANTIES OR REPRESENTATIONS WITH REGARD TO THE DATA SHEETS OR USE OF THE DATA SHEETS, EXPRESS, IMPLIED OR STATUTORY, INCLUDING ACCURACY OR COMPLETENESS. SENSATA DISCLAIMS ANY WARRANTY OF TITLE AND ANY IMPLIED WARRANTIES OF MERCHANTABILITY, FITNESS FOR A PARTICULAR PURPOSE, QUIET ENJOYMENT, QUIET POSSESSION, AND NON-INFRINGEMENT OF ANY THIRD PARTY INTELLECTUAL PROPERTY RIGHTS WITH REGARD TO SENSATA DATA SHEETS OR USE THEREOF.

All products are sold subject to Sensata's terms and conditions of sale supplied at www.sensata.com SENSATA ASSUMES NO LIABILITY FOR APPLICATIONS ASSISTANCE OR THE DESIGN OF BUYERS' PRODUCTS. BUYER ACKNOWLEDGES AND AGREES THAT IT IS SOLELY RESPONSIBLE FOR COMPLIANCE WITH ALL LEGAL, REGULATORY AND SAFETY-RELATED REQUIREMENTS CONCERNING ITS PRODUCTS, AND ANY USE OF SENSATA COMPONENTS IN ITS APPLICATIONS, NOTWITHSTANDING ANY APPLICATIONS-RELATED INFORMATION OR SUPPORT THAT MAY BE PROVIDED BY SENSATA.

Mailing Address: Sensata Technologies, Inc., 529 Pleasant Street, Attleboro, MA 02703, USA.

CONTACT US

Americas
 +1 (800) 350 2727
 sales.beisensors@sensata.com

Europe, Middle East & Africa
 +33 (3) 88 20 8080
 position-info.eu@sensata.com

Asia Pacific
 sales.isasia@list.sensata.com
 China +86 (21) 2306 1500
 Japan +81 (45) 277 7117
 Korea +82 (31) 601 2004
 India +91 (80) 67920890
 Rest of Asia +886 (2) 27602006 ext 2808

X-ON Electronics

Largest Supplier of Electrical and Electronic Components

Click to view similar products for [Encoders](#) category:

Click to view products by [BEI Sensors](#) manufacturer:

Other Similar products are found below :

[6-1393048-5](#) [62AG22-H5-P](#) [62B22-LP-030C](#) [62D22-02-P](#) [62R22-01-040S](#) [63K25](#) [63K32](#) [63KS100](#) [63KS64](#) [63R100](#) [63R50-020](#) [63RS256-060](#) [700-09-36](#) [E6C2-CWZ6C-10 500P/R 5M](#) [E6C3-CWZ5GH 1000P/R 2M](#) [25LB22-G-Z](#) [T101-5C2-111-M1](#) [T101-5C3-111-M1](#) [T101-5C4-111-M1](#) [25LB45-Q-Z](#) [HEDS-8905](#) [385001M0439](#) [385001M0216](#) [DPL12SV2424A25K3](#) [E69-1](#) [E69-DF15](#) [E69-FBA-02](#) [E69-FCA](#) [E6B2-CWZ1X 2000P/R 0.5M](#) [E6B2-CWZ3E 600P/R 0.5M](#) [E6C3-CWZ3EH 800P/R 2M](#) [ENA1D-472-L00050L](#) [61S64-2](#) [62B11-LP-100S](#) [62B11-LPP-P](#) [62C1111-02-020C](#) [62N11-P](#) [62S22-H9-120S](#) [62S30-L0-200C](#) [62V15-02-080S](#) [62V22-02-030C](#) [632911-128](#) [63K64](#) [63KS100-040](#) [63R64-050](#) [63RS256](#) [63RS64](#) [700-16-16](#) [3-1393048-1](#) [63KS128](#)