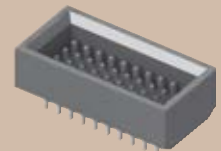
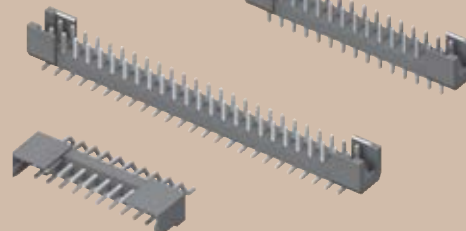


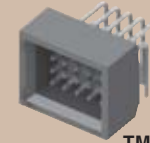


TSH-125-01-F-DV

TSH-115-01-T-D



TMMS-110-01-L-Q-FS



TMMS-105-01-F-Q-RA-FS

TSH-110-01-L-DH-SL

(2,00 mm) .0787"

TSH, TMMS SERIES

SHROUDED HEADERS

Mates with:
CLT, SQT, SQW, ESQT,
TLE, SMM, MMS, PTF

SPECIFICATIONS

For complete specifications and recommended PCB layouts see www.samtec.com?TSH

Insulator Material:
Black Liquid Crystal Polymer



Terminal Material:
Phosphor Bronze

Plating:
Sn or Au over
50µ" (1,27 µm) Ni

Current Rating:
3A per contact @ 80°C ambient

Operating Temp Range:
-55°C to +105°C with Tin;
-55°C to +125°C with Gold

RoHS Compliant:
Yes

Processing:

Lead-Free Solderable:
Yes

SMT Lead Coplanarity:
(0,15 mm) .006" max

Note: Some lengths, styles and options are non-standard, non-returnable.

TSH	1	NO. PINS PER ROW	01	PLATING OPTION	ROW OPTION	OTHER OPTION
05, 10, 15, 20, 25, 30, 35, 40, 45 (40 & 45 = -D & -RA only) (Call Samtec for other sizes)			-F = Gold flash on post, Matte Tin on tail -L = 10µ" (0,25 µm) Gold on post, Matte Tin on tail -T = Matte Tin		-D = Vertical Through-Hole -DV = Vertical Surface Mount -RA = Right Angle Through-Hole -DH = Horizontal Surface Mount	
			Note: Other Gold plating options available. Contact Samtec.		-LC = Locking Clip (-DV only) (N/A with -A) (Manual placement required) -A = Alignment Pin (-DV only) (N/A with -LC) -SL = Solder Locks (-DH only) -K = (4,50 mm) .177" DIA Polyimide Film Pick & Place Pad (N/A with 15 - 30 positions) (-DH only) -M = Metal Pick & Place Pad (-DV only) (N/A -T plating) -TR = Tape & Reel	

Mates with:
SQT, SQW, ESQT

SPECIFICATIONS

For complete specifications see www.samtec.com?TMMS

Insulator Material:
Black LCP



Terminal Material:
Phosphor Bronze

Plating:
Sn or Au over
50µ" (1,27 µm) Ni

Operating Temp Range:
-55°C to +105°C with Tin;
-55°C to +125°C with Gold

RoHS Compliant: Yes

Lead-Free Solderable: Yes

CURRENT RATING (PER CONTACT)	
AMBIENT TEMP	TMMS Mated with SQT
20°C	5.5A
40°C	5A
60°C	4A
80°C	3A

Note: Some lengths, styles and options are non-standard, non-returnable.

TMMS	1	NO. PINS PER ROW	01	PLATING OPTION	Q	OPTION	FS
05, 10, 15, 20, 30, 40, 50			-F = Gold flash on post, Matte Tin on tail -L = 10µ" (0,25 µm) Gold on post, Matte Tin on tail		-RA = Right Angle		
			Note: Other Gold plating options available. Contact Samtec.				

Due to technical progress, all designs, specifications and components are subject to change without notice.

WWW.SAMTEC.COM

X-ON Electronics

Largest Supplier of Electrical and Electronic Components

Click to view similar products for [Headers & Wire Housings](#) category:

Click to view products by [Samtec](#) manufacturer:

Other Similar products are found below :

[95000-104TRLF](#) [10135584-644402LF](#) [DF62W-EP2022PCA](#) [95000-106TRLF](#) [DF62W-2022SCA](#) [DF62W-EP2022PC](#) [2203348](#) [DF62W-2022SC](#) [1084018](#) [1029039](#) [1084017](#) [802-10-012-10-002000](#) [1112640](#) [1112639](#) [000-34000](#) [0009482033](#) [0009507031](#) [57102-S06-03LF](#) [57202-S52-04LF](#) [PCN6-15S-2.5E](#) [0039019024](#) [58102-G61-06LF](#) [582553-1](#) [0009485154](#) [0009508121](#) [0022285053](#) [0050291907](#) [018731A](#) [LY20-4P-DT1-P1E-BR](#) [02.125.8002.8](#) [60101931](#) [60598-1 \(Cut Strip\)](#) [M1625-3R/100](#) [61062-3](#) [61082-181009](#) [636-1427](#) [638009-1](#) [641938-9](#) [641991-4](#) [644168-1](#) [647662-1](#) [65039-019ELF](#) [65817-002LF](#) [65817-015LF](#) [65863-015LF](#) [66207-023LF](#) [67016-026LF](#) [67046-001LF](#) [67095-007LF](#) [67230-005LF](#)