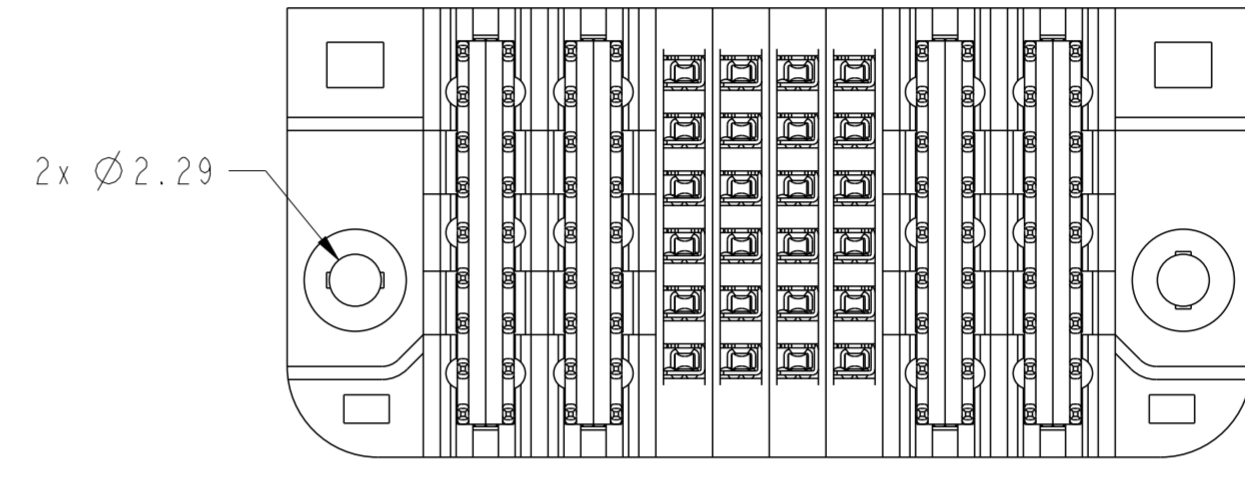
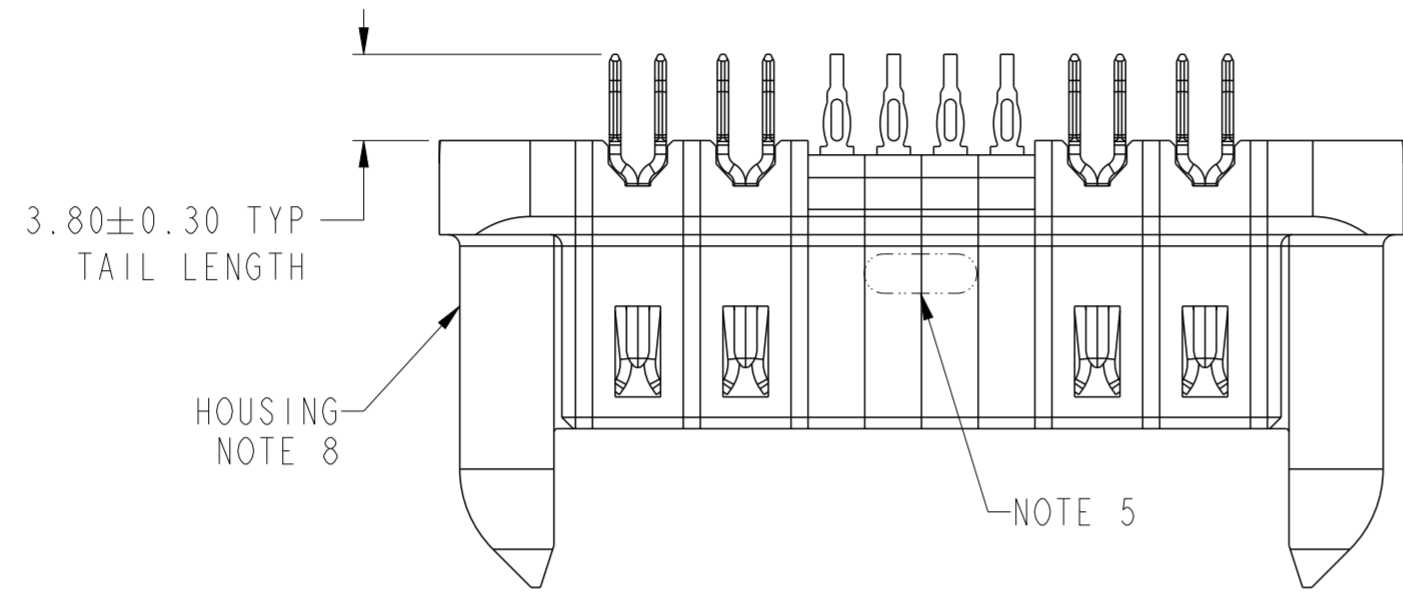
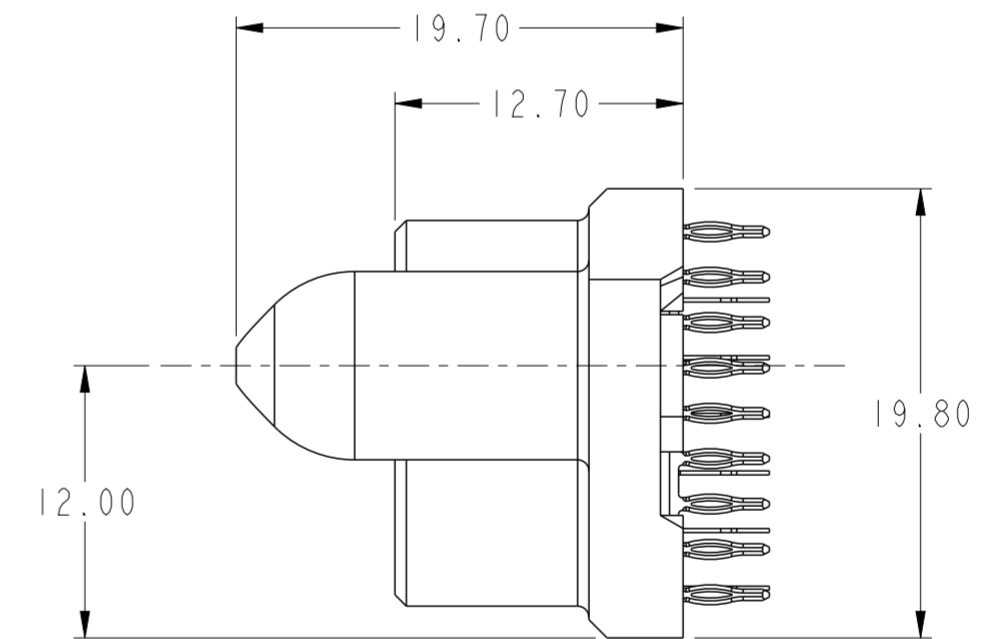
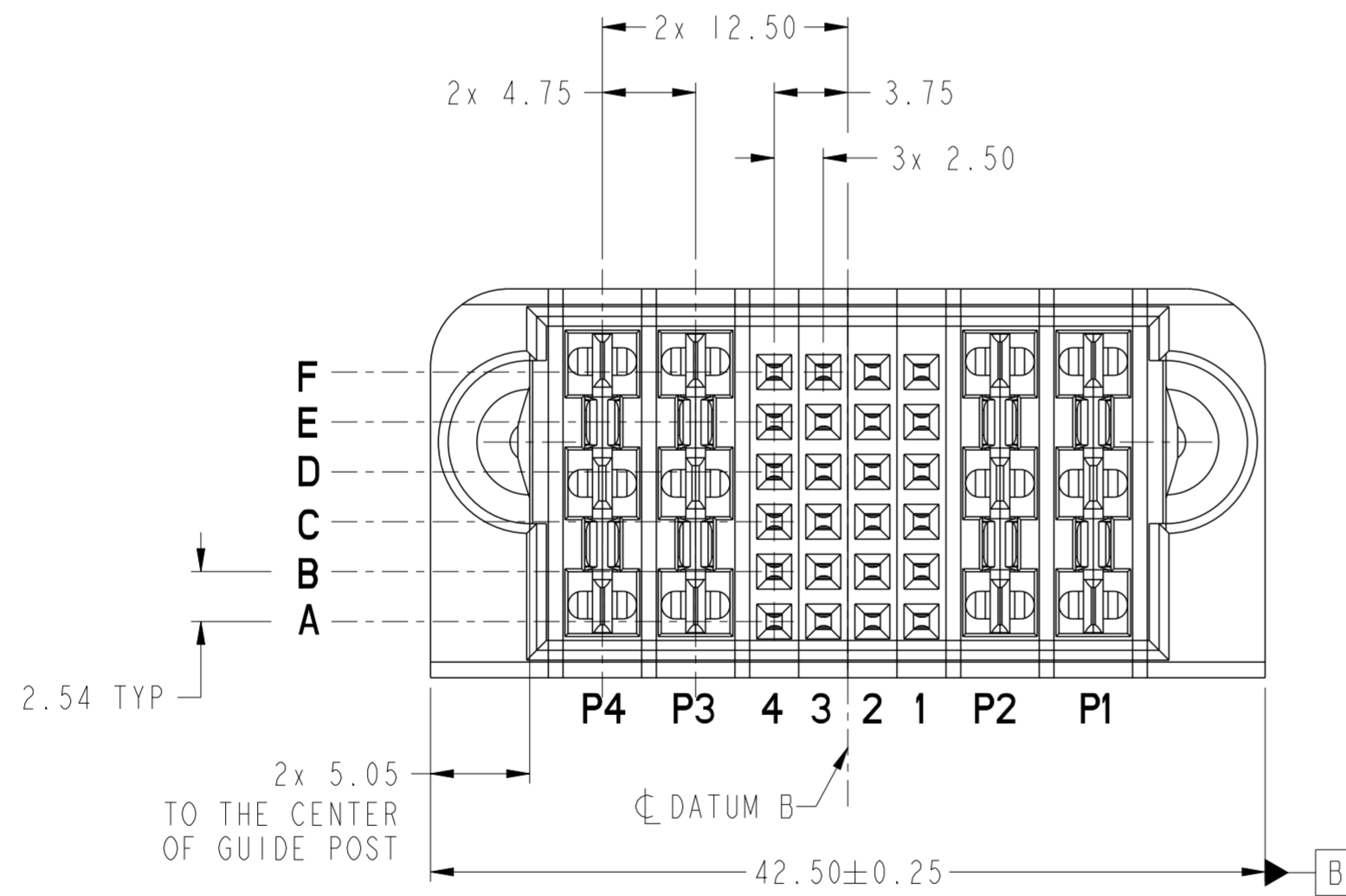


BOTTOM

BOTTOM



BOTTOM VIEW



Amphenol
FCi

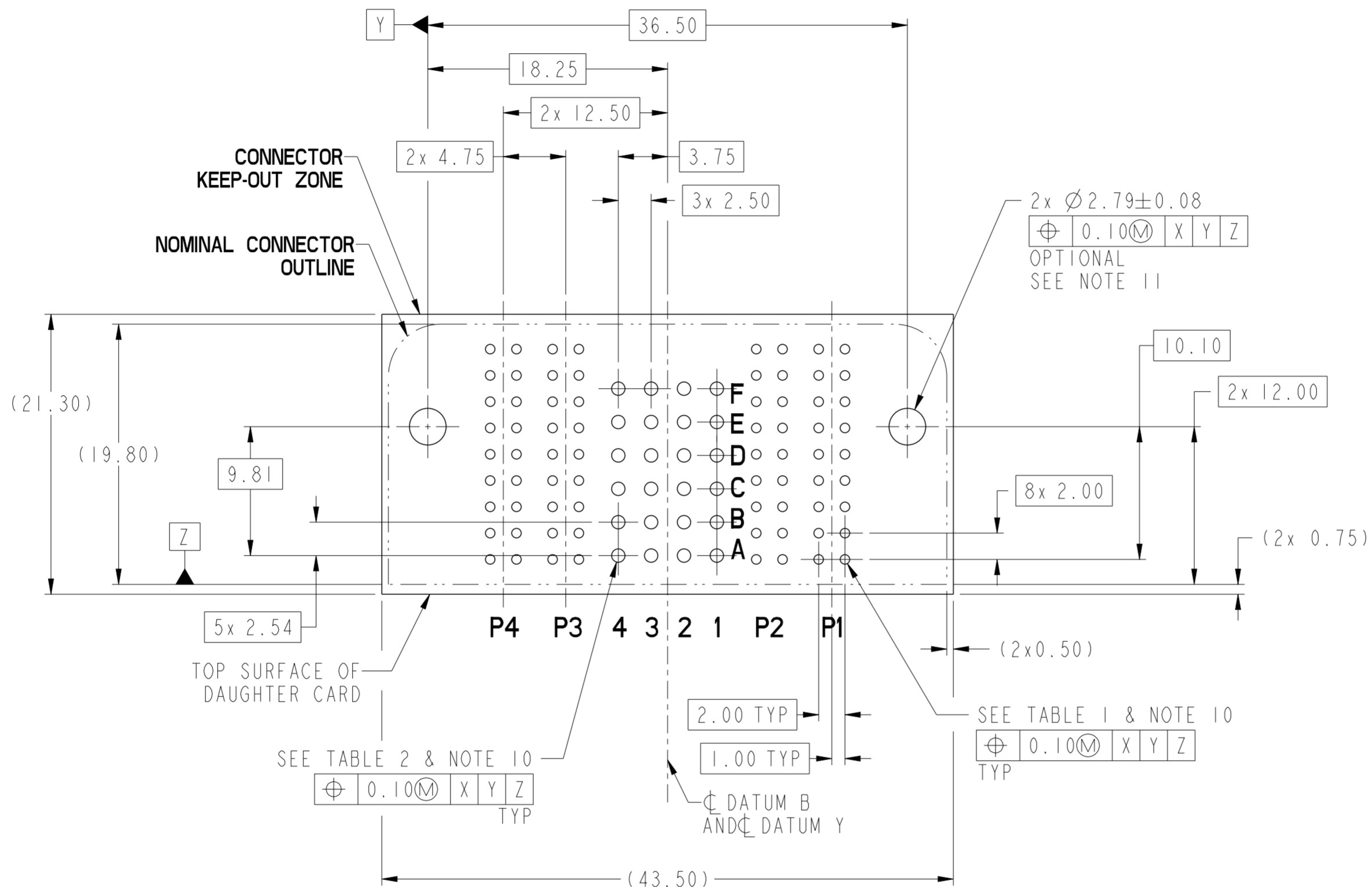
© 2016 AFci

spec ref	*	dr	De-Ming Lu	2015/05/05	projection	MM	size	A2	scale	3:1
tolerance std	ISO 406 ISO 1101	eng	De-Ming Lu	2016/07/07			ecn no	-	rel level	Released
TOLERANCES UNLESS OTHERWISE SPECIFIED		chr	Martin Li	2016/07/07						
surface	ISO 1302	appr	Pei-Ming Zheng	2016/07/07	product family	PWRMAX	rel level	Released	rev	A
	linear	0.X	±0.5	Amphenol FCi	2HP + 24S + 2HP VERTICAL PRESS-FIT RECEPTACLE		dwg no	10135066	sheet 1 of 4	
		0.XX	±0.25		cat. no.	-	Product - Customer Drw			
	angular	0°	±2°							

PDS: Rev :A

STATUS:Released

Printed: Jul 07, 2016



RECOMMENDED PCB LAYOUT
COMPONENT SIDE
NOTE 6

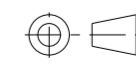
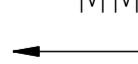

spec ref	*	dr	De-Ming Lu	2015/05/05	projection	MM	size	A2	scale	3:1
tolerance std	ISO 406 ISO 1101	eng	De-Ming Lu	2016/07/07			ecn no	-	rel level	Released
TOLERANCES UNLESS OTHERWISE SPECIFIED		chr	Martin Li	2016/07/07						
surface	linear	0.X	±0.5	0.XX	±0.25	0.XXX	±0.100	Amphenol FCI		
ISO 1302	angular	0°	±2°	TITLE: 2HP + 24S + 2HP VERTICAL PRESS-FIT RECEPTACLE		cat. no.	-	Product - Customer Drw	sheet 2 of 4	

TOP LAYER DESCRIPTION	TABLE 1 (PWRMAX POWER) PLATED THROUGH-HOLE REQUIREMENTS							
	DRILLED HOLE DIAMETER	COPPER THICKNESS	TIN-LEAD THICKNESS	NICKEL THICKNESS	GOLD THICKNESS	TIN THICKNESS	SILVER THICKNESS	FINISHED HOLE DIAMETER
TIN-LEAD	0.81-0.86 (0.85 DRILL)	0.025 - 0.050	0.005 - 0.015	--	--	--	--	0.65 - 0.80
IMMERSION TIN	0.81-0.86 (0.85 DRILL)	0.025 - 0.050	--	--	--	0.9 - 1.5um	--	0.70 - 0.80
IMMERSION SILVER	0.81-0.86 (0.85 DRILL)	0.025 - 0.050	--	--	--	--	0.15 - 0.65um	0.70 - 0.80
COPPER (SEE NOTE 9)	0.81-0.86 (0.85 DRILL)	0.025 - 0.050	--	--	--	--	--	0.70 - 0.80
GOLD	0.81-0.86 (0.85 DRILL)	0.025 - 0.050	--	0.003 - 0.007	FLASH UP TO 0.0002	--	--	0.69 - 0.80

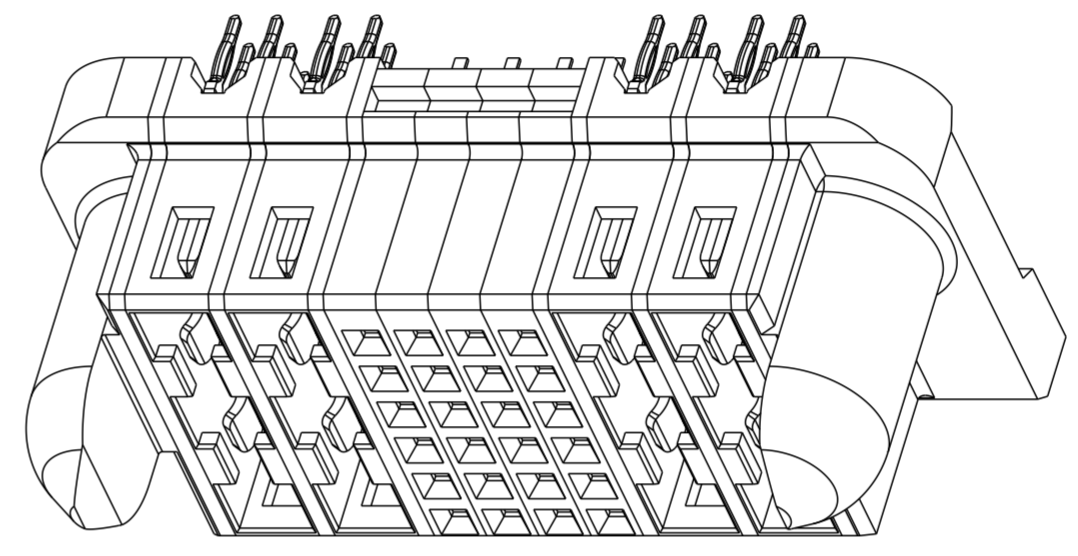
TOP LAYER DESCRIPTION	TABLE 2 (PWRMAX SIGNALS & LOW POWER) PLATED THROUGH-HOLE REQUIREMENTS							
	DRILLED HOLE DIAMETER	COPPER THICKNESS	TIN-LEAD THICKNESS	NICKEL THICKNESS	GOLD THICKNESS	TIN THICKNESS	SILVER THICKNESS	FINISHED HOLE DIAMETER
TIN-LEAD	1.125-1.175	0.025-0.050	0.005-0.015	--	--	--	--	0.94 - 1.10
IMMERSION TIN	1.125-1.175	0.025-0.050	--	--	--	0.9 - 1.5um	--	0.94 - 1.10
IMMERSION SILVER	1.125-1.175	0.025-0.050	--	--	--	--	0.15 - 0.65um	0.94 - 1.10
COPPER (SEE NOTE 9)	1.125-1.175	0.025-0.050	--	--	--	--	--	0.94 - 1.10
GOLD	1.125-1.175	0.025-0.050	--	0.003 - 0.007	FLASH UP TO 0.0002	--	--	0.93 - 1.10

Amphenol FCI

© 2016 AFCI

spec ref *	dr De-Ming Lu 2015/05/05	projection	MM	size A2	scale 3:1		
tolerance std ISO 406 ISO 1101	eng De-Ming Lu 2016/07/07			ecn no -	rel level Released		
TOLERANCES UNLESS OTHERWISE SPECIFIED	chr Martin Li 2016/07/07					product family PWRMAX	
	appr Pei-Ming Zheng 2016/07/07						
surface	linear	0.X ±0.5	0.XX ±0.25	0.XXX ±0.100	angular	0° ±2°	
ISO 1302			Amphenol FCI		title 2HP + 24S + 2HP VERTICAL PRESS-FIT RECEPTACLE	cat. no. - Product - Customer Drw	sheet 3 of 4

PART NUMBER	M2.5 SCREW NOTE 11	TAIL TYPE
10135066-001LF	OPTIONAL	PRESS-FIT



NOTES:

1. CONNECTOR MATERIALS:
HOUSING: HIGH TEMPERATURE THERMOPLASTIC, BLACK
UL 94V-0 COMPLIANT
CONTACTS: HIGH PERFORMANCE COPPER ALLOY
2. CONTACT FINISH (Ref to GS-12-1314 SECTION 5.2)
3. PRODUCT SPECIFICATION: GS-12-1314.
4. APPLICATION SPECIFICATION: GS-20-0447.
5. MANUFACTURER'S NAME, DATE CODE AND OPTIONAL P/N TO APPEAR ON THIS SURFACE. THE P/N CAN BE OMITTED IF THERE IS NOT ENOUGH SPACE ON THIS SURFACE.
6. MINIMUM NOMINAL PCB THICKNESS: 1.6mm
7. PACKAGED IN TUBES.
8. HOUSING COMPONENT WILL WITHSTAND EXPOSURE TO 260°C PEAK TEMPERATURE FOR 10 SECONDS IN A CONVECTION, INFRA-RED, OR VAPOR PHASE REFLOW OVEN.
9. COPPER PLATING THICKNESS IN CENTER OF VIA-HOLE CAN BE NO MORE THAN 0.003 LESS THAN OTHER AREAS.
10. ALL HOLE SIZES ARE FINISHED HOLE SIZES.
11. RECOMMENDED RETENTION TO PCB:
Ø0.110[2.79] THRU HOLE (UNPLATED) FOR M2.5 SELF THREADING SCREW, MAX HEAD Ø0.177[4.50].
RECOMMENDED SCREW LENGTH 0.276[7.00] + PCB THICKNESS.
RECOMMENDED SCREW SEATING TO PCB TORQUE: 2-5 lbf-in (2300-5760 gf-cm).

Amphenol
FCi

© 2016 AFCI

spec ref	*	dr	De-Ming Lu	2015/05/05	projection	MM	size	A2	scale	3:1	
tolerance std	ISO 406 ISO 1101	eng	De-Ming Lu	2016/07/07			ecn no	-			
TOLERANCES UNLESS OTHERWISE SPECIFIED		chr	Martin Li	2016/07/07			rel level	Released			
surface	linear	appr	Pei-Ming Zheng	2016/07/07	product family	PWRMAX	rel level	Released	cat. no.	-	
	angular	Amphenol FCi		title	2HP + 24S + 2HP VERTICAL PRESS-FIT RECEPTACLE		dwg no	10135066		rev	A
ISO 1302	0.X ±0.5 0.XX ±0.25 0.XXX ±0.100			Product - Customer Drw	sheet 4 of 4						

PDS: Rev :A

STATUS:Released

Printed: Jul 07, 2016

X-ON Electronics

Largest Supplier of Electrical and Electronic Components

Click to view similar products for [Heavy Duty Power Connectors](#) category:

Click to view products by [Amphenol](#) manufacturer:

Other Similar products are found below :

[1424439](#) [1424438](#) [09330062652](#) [2-8675P1](#) [605601-1](#) [6340G1](#) [6341G1](#) [6360G1](#) [6373G1](#) [6374g2](#) [6396G1](#) [647757-1](#) [66394-4](#) [6643411-1](#)
[6646058-2](#) [6646137-1](#) [6646138-1](#) [6646348-1](#) [6646479-1](#) [6646608-1](#) [6646786-1](#) [6646940-1](#) [6651091-1](#) [6651525-1](#) [6651529-1](#) [6651778-1](#)
[6651788-1](#) [696465-1](#) [696475-1](#) [73000005059](#) [73000005349](#) [73000005642](#) [73080255059](#) [73080965046](#) [765-15-0080A](#) [765-16-0080B](#)
[789.700-44](#) [789.700-54](#) [80-1010](#) [80-9](#) [827381-1](#) [829992-1](#) [902-77-02113](#) [PL00U-301-10D10](#) [PM103MOOLOO](#) [PM16S1620S32-50](#)
[PM212MOOLOO](#) [PM309FOOLOO](#) [PM324FOOLCH](#) [PMHPAF11S03](#)