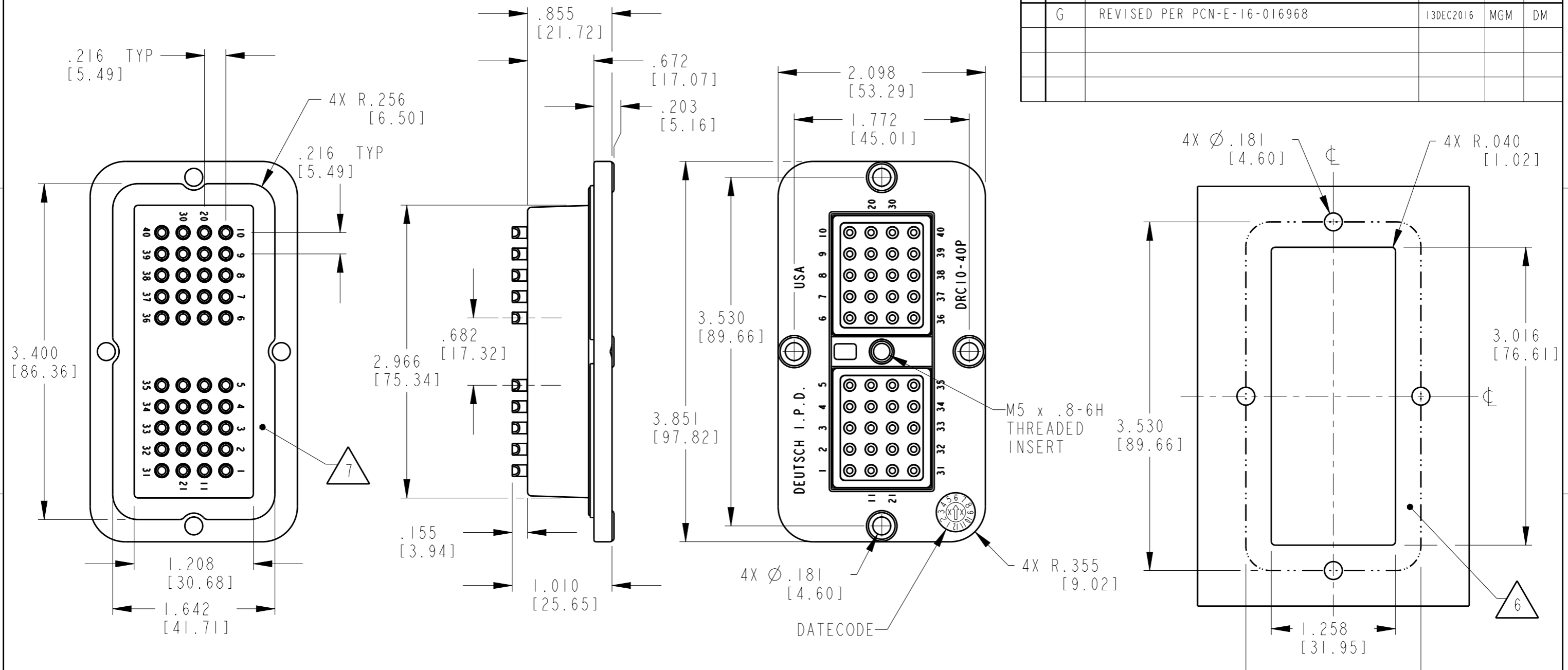
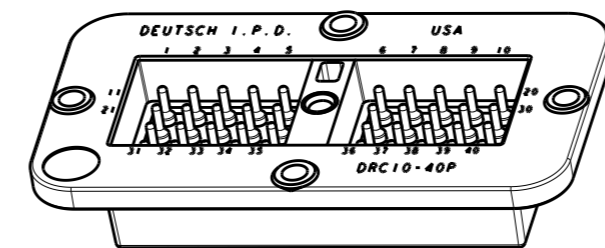


P	LTR	DESCRIPTION	DATE	DWN	APVD
	G	REVISED PER PCN-E-16-016968	13DEC2016	MGM	DM



- 7. FLANGE SEAL IS CUSTOMER SUPPLIED.
  - 6. SURFACE FINISH: 32 RMS OR BETTER; .005 [.12]
  - 5. THIS RECEPTACLE MATES WITH DRC16-40S-XXXX. (XXXX = ALL MODIFICATIONS)
  - 4. CONTACT PLATING - MATING AND SOLDER CUP SIDES: TIN
  - 3. MATERIAL - HOUSING: PLASTIC; SEAL: RUBBER; INSERT: STEEL
  - 2. RECEPTACLE IS SUPPLIED WITH DUST CAP (NOT SHOWN).
  - 1. DIMENSION TOLERANCE: ±.025 [.64]; CUTOUT: ±.010 [.25]
- NOTES: UNLESS OTHERWISE SPECIFIED



**RECOMMENDED CUTOUT**

TE INTERNAL PN	DEUTSCH PN
DRC10-40P	DRC10-40P

THIS DRAWING IS A CONTROLLED DOCUMENT.		DWN 08SEP2003 V. TOMSA		TE Connectivity	
DIMENSIONS: in [mm]		CHK 24SEP2003 X. SANCHEZ			
TOLERANCES UNLESS OTHERWISE SPECIFIED:		APVD 24SEP2003 D. MEYER		NAME RECEPTACLE, FLANGED SOLDER POT 40 #16 SIZE CONTACTS DRC SERIES COLOR: BLACK	
0 PLC ± 1 PLC ± 2 PLC ± 3 PLC ± 4 PLC ± ANGLES ± FINISH ±		PRODUCT SPEC - APPLICATION SPEC - WEIGHT 112 (g)		SIZE A3 CAGE CODE 4AFU8 DRAWING NO. DRC10-40P RESTRICTED TO -	
MATERIAL		CUSTOMER DRAWING		SCALE 1:1 SHEET 1 OF 1 REV G	

## X-ON Electronics

Largest Supplier of Electrical and Electronic Components

*Click to view similar products for [Automotive Connectors](#) category:*

*Click to view products by [TE Connectivity](#) manufacturer:*

Other Similar products are found below :

[003-018-000](#) [600858](#) [60403001](#) [60993906-B](#) [60993913-B](#) [629515004020001](#) [M902-2131](#) [M902-2161](#) [M902-2344](#) [72.330.1035.1](#)  
[73.353.4028.0](#) [F118010](#) [F119300-B](#) [F132210](#) [F132210-B](#) [F166900](#) [F180100](#) [F258300](#) [F258300-B](#) [F294300-B](#) [F339100](#) [F339700](#) [F358300-](#)  
[B](#) [F374110](#) [F407400](#) [F412210](#) [F427600](#) [F444110](#) [F487000](#) [F495100-B](#) [F500900-B](#) [F509500B-B](#) [770444-1](#) [776880-1](#) [827153-1](#) [881735-1](#)  
[8N1515-32-24P](#) [9-1326727-8](#) [9-1326729-8](#) [925467-1](#) [925474-1](#) [928905-1](#) [936398-2](#) [964562-1](#) [964562-4](#) [964731-2](#) [965051-1](#) [968782-1](#)  
[GT17SA-8DS-HU](#) [GT17VS-10DP-5.2CF](#)