

## Low Loss 2-way Wilkinson Splitter 380 MHz - 2700 MHz 5501.17.0027

### Wilkinson Splitter

#### Description

This Wilkinson style Power Divider has been designed for low power applications where output isolation is preferable over lowest possible loss. The wide frequency range of this design allows use with multiband antennas and leaky cable systems.

Lower loss dividers which enhance receive sensitivity and preserve transmitted power are available as reactive splitters.

Supports Tetra, Tetrapol, LMR/P25, LTE, UMTS/WCDMA, TD-SCDMA, AMPS, GSM, PCS, CDMA, WiFi / WLAN 2.4 GHz.



#### Technical Data

##### Electrical Data

	Signal Band 1	
Frequency	0.38 - 2.7 GHz	
Return Loss input port	17 dB	
Return Loss output port	17 dB	
Splitter Loss	3 dB	
Insertion Loss	0.8 dB	
Isol. between Output ports	20 dB	
Ampl. tra. betw. outp. ports	0.3 dB	
Max. Composite Power	10 W	
	Input 1	
Connector Type	N	
Gender	jack (female)	
	Output 1	Output 2
Connector Type	N	N
Connector Gender	jack (female)	jack (female)
Char. impedance	50 Ω	

##### Mechanical Data

Dimensions	19.6 x 87 x 102 mm (Height x Width x Length)
Weight	0.37 kg

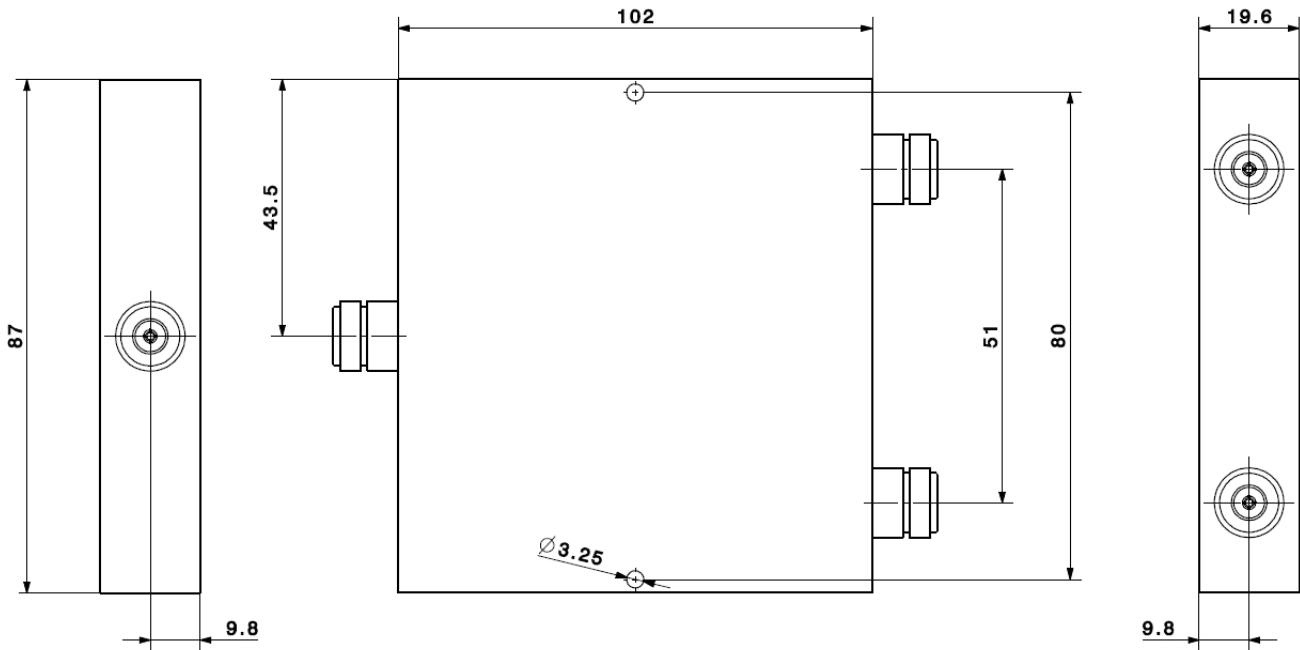
##### Environmental Data

Environmental conditions	indoor
Operation temperature	-30 °C to 60 °C
Storage temperature	-30 °C to 60 °C
Transport temperature	-30 °C to 60 °C
RoHS 2011/65/EU	compliant

##### Related Documents

Outline drawing	DPR-00172188
3D-model (Step)	DOC-0000369307

## Low Loss 2-way Wilkinson Splitter 380 MHz - 2700 MHz 5501.17.0027



## X-ON Electronics

Largest Supplier of Electrical and Electronic Components

*Click to view similar products for [Signal Conditioning](#) category:*

*Click to view products by [Huber & Suhner](#) manufacturer:*

Other Similar products are found below :

[MAPDCC0004](#) [PD0409J5050S2HF](#) [880157](#) [HHS-109-PIN](#) [DC1417J5005AHF](#) [DC4859J5005AHF](#) [AFS14A30-2185.00-T3](#) [DS-323-PIN](#)  
[DSS-313-PIN](#) [B39321R801H210](#) [B39921B4317P810](#) [1A0220-3](#) [2089-6207-00](#) [JP510S](#) [LFB212G45SG8C341](#) [LFB322G45SN1A504](#)  
[LFL182G45TC3B746](#) [SF2159E](#) [30057](#) [1P510S](#) [CER0813B](#) [3A325](#) [40287](#) [41180](#) [ATB3225-75032NCT](#) [B69842N5807A150](#)  
[BD0810N50100AHF](#) [BD2425J50200AHF](#) [HMC189AMS8TR](#) [C5060J5003AHF](#) [JHS-114-PIN](#) [JHS-115-PIN](#) [JP503AS](#) [DC0710J5005AHF](#)  
[DC2327J5005AHF](#) [DC3338J5005AHF](#) [43020](#) [LFB2H2G60BB1C106](#) [LFL15869MTC1B787](#) [X3C19F1-20S](#) [XC3500P-20S](#) [10013-20](#)  
[SF2081E](#) [SF2194E](#) [SF2238E](#) [CDBLB455KCAX39-B0](#) [RF1353C](#) [PD0922J5050D2HF](#) [600S150FTRB](#) [1E1305-3](#)